

Today, why not collect a hot tasty meal from your local pub?

FIND OUR MENUS INSIDE



*Pages
28-29!!*

Call us with your order on
(01664) 822225

The

Hickling Standard

Village Newsletter for
Hickling and
Hickling Pastures

Issue 153

April/May 2024





Belvoir Angels Weekend

May 18th & 19th 2024

Saturday May 18th:

Open Day

10am-4pm

with events, activities & displays - Hickling Church

Talks and activities will be repeated through the day
please call in for as little or as long as you wish

- ~ Churchyard Tours ~ Belvoir Angel rubbings ~ Tower Tours ~
- ~ hourly introductory talks ~ photographing the Angels -
- ~ the stories ~ Vanessa Stone's artwork & designs ~
- ~ Refreshments ~ Entry free ~ Donations, please ~

Sunday May 19th:

Seminar: Belvoir Angels—past, present & future

Conversations about the Belvoir Angels

2pm-4pm (inc. refreshments) Hickling Village Hall

You are invited to speak (5 minute sections) or just listen or ask questions about the Belvoir Angels in this exploration of these beguiling headstones.

All welcome; but, if you would like to speak, please register with us beforehand (programme will be circulated nearer the time).

~~~~~

**for further information:**

email: [info@hicklingnottslcalhistory.com](mailto:info@hicklingnottslcalhistory.com)

FB: [www.facebook.com/HicklingNottsLocalHistory/](https://www.facebook.com/HicklingNottsLocalHistory/)

website: [www.hicklingnottslcalhistory.com](http://www.hicklingnottslcalhistory.com)



# Hickling Scarecrows 2024

**SAVE THE DATE: 14th & 15th September**



Hickling Scarecrows Committee wishes you a Happy 2024, Year of the Wood Dragon, which leads us tenuously onto the theme which this year is Flora and Fauna - ideas list below for naturalistically challenged. As usual we distribute any funds raised between local charities and a nominated main charity. This year we're delighted to have chosen Emmanuel House Nottingham - a charity supporting homeless people in their recovery.

A little reminder that if you have any unwanted presents or bottles, please take them to Margaret Woolley, The Old Post Office, for the Bottle Stall and Tombola (please check dates). We'd also love sponsorship for attractions, offers of help for everything from car-parking to washing up and Raffle prizes. If you'd like to be on the committee and help with organising please contact Karen Buckley or Barbara McEwen.

## Flora & Fauna Ideas

- |                           |                              |                      |
|---------------------------|------------------------------|----------------------|
| Swan Lake                 | Gamekeeper                   | Ant and Dec          |
| Ricky Lake                | Micheal J Fox                | Bee Movie            |
| Tiger Woods               | Fox News                     | Antz                 |
| Jungle Book               | Jamie Fox                    | Taylor Swift         |
| Mickey Mouse              | Donald Duck                  | Pingu                |
| Donald Duck               | Bugs Bunny                   | Snakes and Ladders   |
| Mayor (mare) of .....     | Teenage Mutant Ninja Turtles | Moby Dick            |
| Bananaman                 | The Hare and the Tortoise    | Mr Bean              |
| Spiderman                 | Mother Goose                 | Monty Python         |
| Pussycat Dolls            | Chicken Run                  | Cocktail             |
| The Owl and the Pussy cat | Jurassic Park                | Little Matchgirl     |
| Miss Tiggywinkle          | Madagascar                   | The Monkees          |
| Fifi and the Flower Tots  | Ice Age                      | Captain birdseye     |
| The Magic Faraway Tree    | Watership Down               | Naturalist (Bellamy) |
| Finding Nemo              | Flower Fairies               | The Beatles          |
| Little Mermaid            | Flower Power                 | Percy parkeeper      |
| Aslan, Narnia             | Adam and the Ants            |                      |
| Loch Ness monster         |                              |                      |

# Volunteers needed



Dove Cottage Day Hospice provides services, support and respite care for local families living with life-limiting illnesses. Around 100 families a week rely on the support that we provide, and we couldn't do what we do without our amazing team of volunteers.

We have a fantastic team of hard-working, dedicated volunteers but we are in desperate need for more!

**Do you have a few hours to spare each week?  
Would you like to make a difference to local families?  
Do you want to be part of a fantastic team?**

There are lots of opportunities to get involved with supporting the hospice, however we're currently looking for people to fill the following roles:



Visit [www.dovecottage.org/volunteering](http://www.dovecottage.org/volunteering) or call 01949 860303 to find out more!

[www.dovecottage.org](http://www.dovecottage.org)

01949 860303

@dovecottagedayhospice

- |                                                 |                                               |                         |                                  |
|-------------------------------------------------|-----------------------------------------------|-------------------------|----------------------------------|
| Pegasus                                         | The Chinese Zodiac                            | Jive Bunny              | Nicola Sturgeon                  |
| The Lion and the Unicorn                        | Canis Major                                   | Dog days                | Alan Partridge                   |
| War of the Roses                                | Ursa Major                                    | Prince of Wales         | Desert Orchid                    |
| Easter bunny                                    | The White Rabbit (Alice)                      | Pit pony                | Red Rum                          |
| Pony express                                    | Michael Fish                                  | Birds Eye               | Cowboy                           |
| Snake oil salesman                              | Jimney Cricket                                | Cuckoo Clock            | Donkey                           |
| Tigermoth                                       | Cricket                                       | Trout Pout              | The Very Hungry Caterpillar      |
| 4 Horsemen of the Apocalypse                    | Jack and the Beanstalk                        | Zebra crossing          | Robin Williams                   |
| Professor Plum                                  | Woody Allen                                   | Jaguar                  | William and Mary of Orange       |
| Sheepdog                                        | Woody Woodpecker                              | Beehive                 | Desert Rats                      |
| Guide dog                                       | Heather Small                                 | Fish n chips            | Martin Luther King               |
| Sniffer dog                                     | The Byrds                                     | Toad in the hole        | Kangaroo Court                   |
| Cart horse                                      | Nottingham Panthers                           | Junbo jet               | Kate Bush                        |
| Jumbo                                           | Leicester Tigers                              | Peter and the Wolf      | Kate Moss                        |
| Seal                                            | Leicester Foxes                               | The Ugly Duckling       | Stirling Moss                    |
| Cat Deely                                       | Derby Rams                                    | Batman                  | Babe                             |
| Cat Stevens                                     | Notts Forest                                  | Vampire bat             | Charlotte's Web                  |
| Rose from Titanic                               | The Byrds                                     | Tea Clipper             | Alvin and The Chipmunks          |
| Goat herd                                       | Feame Cotton (two plants - pleased with that) | Werewolf                | Squirrel Nutkin                  |
| Orlando Bloom                                   | Buddy Holly                                   | Apple                   | Ronnie Wood, Rolling Stones      |
| Tigger                                          | Huckleberry Finn                              | Blackberry              | Sir Robin Day                    |
| Wind in the Willows                             | Robert Plant                                  | Tweety pie              | Big Bird                         |
| Sheryl Crow                                     | Robin Hood                                    | Foxtrot                 | Bambi                            |
| Florence Nightingale                            | Poppy Delavigne                               | Snoopy                  | Robbie The Reindeer              |
| The Housemartins                                | Cabbage Patch dolls                           | Crows nest              | Rudolf the Red Nosed Reindeer    |
| Swallows and Amazons                            | Sergeant Pepper's Lonely Heart Club Band      | The Birds and bees      | Free Willy                       |
| Bear Grylls                                     | Private Pike (Dad's Army)                     | SAGE (remember them)    | Dr Dolittle                      |
| My Little Pony                                  | Dicky Bird                                    | The muppets             | Christopher Wren                 |
| Hedwig                                          | Hyacinth Bucket                               | Miss Piggy              | Russel Crowe                     |
| Harry Potter and the Order of the Phoenix       | Bird of a feather                             | Kermit                  | Dean Martin                      |
| Fantastic Beasts and where to find them         | Forrest Gump                                  | HMS Beagle              | Ladies in Lavender               |
| St Bernard                                      | The Funky Gibbon                              | Rockin Robin            | War Horse                        |
| Jailbird                                        | Wales                                         | Robin Reliant           | Animal Farm                      |
| Shaun the Sheep                                 | Tom and Jerry                                 | Puss in Boots           | The Love Bug - Herbie            |
| Sean Bean                                       | Jeremy Vine                                   | Larry the lamb          | Bug's Life                       |
| I'm a Celebrity                                 | Teddy Roosevelt                               | The Wombles             | JayZ                             |
| Lilly Allen                                     | Mary Berry                                    | Ravens of the Tower     | Floats like a butterfly          |
| Lilly Savage                                    | Wolverine                                     | er                      | Stings like a bee (Mohammad Ali) |
| Cats                                            | Cinderella pumpkin                            | Sting                   | Artemois Fowl                    |
| King Kong                                       | Mrs Peacock (cluedo)                          | Schrodingers cat        | Chicken Little                   |
| Nellie the Elephant                             | Rod Hull and Emu                              | Pavlovs dogs            | The Mayflower                    |
| Bill and Ben the Flowerpot men (probably taken) | Basil Brush                                   | Driving Miss Daisy      | Jaws                             |
| HPaddington                                     | The Hollies                                   | Ginger Rogers           | Jack Russell                     |
| Life of Pi                                      | Holly Valance                                 | Marmaduke               |                                  |
| Lion King                                       | Bee Gees                                      | Scooby Doo              |                                  |
| Black Beauty                                    | Chuck Berry                                   | Octopussy               |                                  |
| Lassie                                          |                                               | Octonauts               |                                  |
| Richard the Lionheart                           |                                               | Peppa Pig               |                                  |
| The Zodiac                                      |                                               | The Taming of the Shrew |                                  |
|                                                 |                                               | Carnival of the Animals |                                  |
|                                                 |                                               | Spice girls             |                                  |
|                                                 |                                               | Hollywood               |                                  |

**SAVE THE DATE!**

**PAWSOME**

**FAMILY FUN DAY & DOG SHOW!**



**SUNDAY 7TH JULY 2024**  
**11.00-4.00**

A day full of fun for the whole family!!  
© Stathern Lodge (opposite the hospice) Canal Lane, LE14 4EX

Follow us for updates and more details  @dovecottagehospice

IN AID OF 

**CALLING ALL  
BUDDING  
PHOTOGRAPHERS!**



**DO YOU HAVE SOME AMAZING  
PHOTOS YOU'D LIKE TO SHARE?**

Dove Cottage is looking for a range of photographs to be included in their 2025 calendar.

The theme will be 'Wildlife in the Vale' and we are welcoming any images depicting local flora and fauna.

The final calendar will be available for sale in the autumn via our hospice and four charity shops.



For more information visit: [www.dovecottage.org/calendar](http://www.dovecottage.org/calendar)

*Messages*

Please contact us with your messages - we look forward to hearing from you.



No **welcome messages** for this issue: but if you have recently moved in to Hickling or Hickling Pastures and we haven't said, 'Hello!', we hope that you are enjoying living in the village and your new neighbours look forward to meeting you.

We are very sad to share the news that Keith Wadkin has died recently. A true Hickling man, he worked as a tree surgeon with his own family business. With his mother and wife, he collected village history which, with his permission, has been shared in recent years for everyone's enjoyment. Following his wife, Hazel's Alzheimer's diagnosis he dedicated years to fundraising for the Alzheimer's Society. Our thoughts and best wishes go to Keith's family and friends.

We are very sad to share the news that Cedric Ford died in January. He lived for many years on Bridegate Lane in Hickling Pastures. Our thoughts and best wishes go to his family and friends.

**SERIOUSLY!!!!**

**We really are looking for a New Editor—we need your HELP!!**

After stepping in temporarily following Maggy's retirement from editing the Hickling Standard, we are looking for a volunteer to continue the good work; please contact Jane at [frasermjlk@outlook.com](mailto:frasermjlk@outlook.com)

- The newsletter is collated on Microsoft Publisher at the moment, but that can change
  - Help & support will be given by the team
- Involves a couple of days spread over every two months (6 issues per year)



**VALE ELECTRICS**  
ELECTRICAL CONTRACTORS

[www.valeelectrics.co.uk](http://www.valeelectrics.co.uk)



# Squirrel Stores

*The biggest "little" shop in the Vale of Belvoir*



Delivery service now available  
on orders over £20  
(excluding cigarettes and tobacco)  
Contact us on 822315 or call in  
to the shop for more details.

- Greetings cards
- Artisan jams, chutneys, honey etc
- Newspapers and magazines
- Wines, beers, local ales and ciders
- Freshly baked Hambleton bread and produce delivered daily
- Selection of butcher's meat produce and Melton Mowbray pork pies
- Local cheeses
- Large variety of fresh fruit and vegetables (personal weekly fruit delivery and veg boxes available)
- Dry cleaning service
- Refill station
- Fresh sandwiches, sausage rolls, samosas etc

*Opening hours:*  
*Monday to Saturday 7am to 7pm*  
*Sunday and Bank Holidays 8am to 1pm*  
*01664 822315*

*The Sands, Long Clawson*

## HICKLING BREAKFASTS

### Sundays, Village Hall 9 – 11am

### April 7<sup>th</sup> and May 5<sup>th</sup>

Full English Breakfast £5.50  
Vegetarian\* Full English £6.00  
Children's Full English £4.00

***Bring your family, meet your friends.***  
***ALL WELCOME***

If possible please book your places in advance to help us with the catering. **Walk-ins still welcome!**  
(\***Vegetarians** - prior notification appreciated)

Bookings / queries call Barbara 01664 822834 or  
Pauline 01664 822835



### Village Hall 150 Club Results

Draw: 05/03/2024

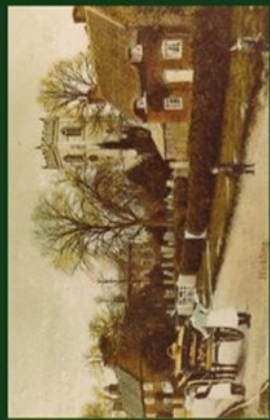
£80 - 96 - Steve and Emma Green  
£60 - 185 - Helenka Brown  
£40 - 131 - Minerva Page  
£20 - Peter and Margaret Sharpe





Local History Group  
**Hickling**  
 Nottinghamshire

www.hicklingnottslocalhistory.com



## Are You Interested in Local History?

~~~

Research
 Transcribing
 Recording memories
 Events

~~~

Old photographs  
 House Deeds  
 Family records  
 Businesses/Clubs/Societies

~~~

We are looking for all kinds of involvement.

Please contact us:

if you would like to be involved in the local history group or if you have any projects that you would like to work on or if you have material that we could add to our collections.

~~~

info@hicklingnottslocalhistory.com

Facebook

Speak to: Carol Beadle, Gill Bloor,  
 Pauline Chell, Jane Fraser.

## Hickling Village Hall Quiz Friday, April 12th starting at 7pm

Tickets £5 per person.

Maximum number in each team is 6.

Many prizes (for the winning team, booby prize, raffle prizes, etc.).

Please bring your own drinks and snacks.

### Vélo Belvoir is back!

Vélo Belvoir is back! The charity cycle ride will take place on **Sunday 12<sup>th</sup> May**. The ride starts and finishes in Hose and offers a choice of three routes: 30, 60 and 100 miles, all on quiet roads through the pretty villages and countryside of the scenic Vale of Belvoir. All riders will receive a medal and a delicious meal at the end of the ride, and there will be refreshments (with plenty of homemade cake) for those on the two longer rides. In addition, all riders will pass through our Donut Stall for a cheeky snack.

Vélo Belvoir is raising much needed funds for two local registered charities. The profits will be split between Dove Cottage Day Hospice and Cropwell Bishop Friends of School. Dove Cottage Day Hospice provides valuable specialist support for the terminally ill and their loved ones. Cropwell Bishop Friends of School raises funds to enhance learning opportunities at the school for the children.

Vélo Belvoir is grateful for the sponsorship of Melton Sports. We are delighted to welcome Bishop Cycles to the event to provide mechanical assistance at the start. Bishop Cycles is offering a 15% discount on all bike servicing prior to the ride for everyone who has entered.

Registration is now open for Vélo Belvoir 2024 and all cyclists are welcome. A great day and a memorable ride are guaranteed for all. To sign up, please visit [www.velobelvoir.com](http://www.velobelvoir.com), where you will be redirected to the registration page with British Cycling. We look forward to seeing you there!  
 The Vélo Belvoir Organising Committee.



The Basin, Main St, Hickling  
 Melton Mowbray, LE14 3AH  
 01664 820448  
 relax@theoldwharf.co.uk  
 www.theoldwharf.co.uk

*Time to relax and unwind*

TEAROOM OPEN SEVEN DAYS A WEEK FROM 9.00 AM - 4.00PM

Please note the kitchen closes at 3.15pm and last drinks orders are at 3.45pm




Find us on Facebook

## Luna Counselling & Psychotherapy

- **Pluralistic Counselling and Psychotherapy** including CBT, Person-Centred, Psychodynamic, Play Therapy and Gestalt.
- **Face to face, online** and via **telephone**.
- Based in **Cotgrave**, Nottingham.
- Ages **children to older adults**.
- Accredited Member of the **National Counselling Society** and on their **Children & Young People register**.
- **Fully insured, level 5 trained** and holds **enhanced DBS** certificate.
- Low mood and **depression, anxiety**, intrusive thoughts, **OCD, bereavement** and grief, **anger** and frustration, **phobias, relationship issues**, lifework, **motivation, self-defeating behaviours**.

Ellie Meakin  
 Ellie@LunaCounselling.co.uk  
 07444 529 521  
 \*Please contact for prices\*



## Local History Group



Email contact list:  
 general news and updates  
 about projects that we are working on.  
 To join the mailing list, please send your name and details to us at:  
 info@hicklingnottslocalhistory.com  
**Gatherings at the Plough Inn.**  
 Drop in, bring things, talk about all-things-Hickling!

## Headmaster's log book: 1876-1897

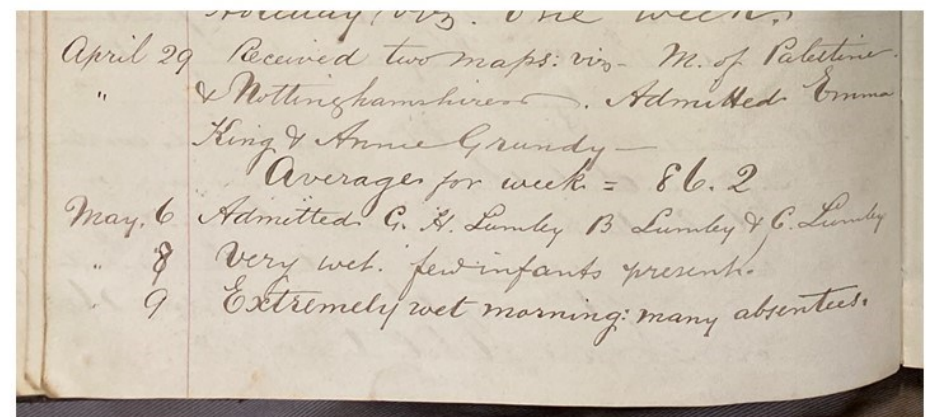
*(one of our volunteers is currently transcribing the logbook which is full of the most fascinating snapshots of village life—in the meantime, a short extract)*

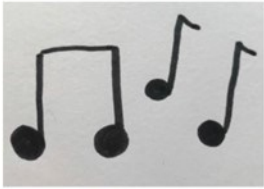
**Feb 20th** Geo Carrington came to school his morning with his feet and trousers very wet. He had been jumping and had fallen in to the (crossed out—Smite) Dalby Brook. I sent him home.

**9th April** Thos Stevenson first boy in the first class was subject to a fainting fit during lessons this morning. I administered a little brandy and after a time had elapsed he came round.

**12th April** Average for this week 90.3.

**17th April** Mrs [Job] Marsden came to school to say she was afraid that her son Wm Marsden no.1. had the measles: they were she thought coming out all over him. I told her to keep all her children at home if such was the case. I have just closed for Easter Holiday viz. one week. Received two maps: viz. of Palestine & Nottinghamshire. Admitted Emma King and Annie Grundy.





Music



Sign



Storytime

A fun music and story group for babies and preschoolers supported by Makaton signing.

Mondays 10-11am during term time

St Luke's church, Kinoulton.

£3 per family group per session.

for more information send Cate a message

at [musicsignstorytime@gmail.com](mailto:musicsignstorytime@gmail.com) or 07886169691

### Table Tennis at the Village Hall!

Monday nights 8 – 10pm

It's been a great season for Village Table Tennis. There have been lots of new friendly faces and so much enthusiasm that we extended our season beyond the Easter break for the first time. Our ethos of 'simply social' is at the heart of our sessions which offer a friendly knock about or a more intensive game and, of course, the chance to socialise.

We'll be taking a break for the summer and will return to the Village Hall on Monday 11 September at 8pm.

For more information call Alison 822761, or Dave 820262.

- Whether your preference is to have a friendly knock-about, or to seek the challenge of an intensive game, our flexible sessions are perfect for you
- Our season runs through the winter from late September to Easter, with a festive break
- Cosy village hall venue with superb facilities and tables for full match play standard
- Comprehensive set up to and quality equipment provided according to ability
- Enjoyable all round exercise in an exceptionally friendly environment, whatever your experience and ability
- Tea and biscuits included, providing an opportunity to relax and socialise

**SIMPLY CALL 01664 822761 or 01664 820262 FOR AN INFORMATIVE CHAT**

*Try our outdoor table at the Wharf in Hickling.  
Bats and balls available from The Old Wharf Tearooms*



## Have you seen this?



There are many hidden gems in the village which are worth keeping an eye out for. In the south aisle of the Church there is a slightly newer window than elsewhere which is made of clear glass, not stained.

It is covered in the most amazing graffiti from the last 200 years; including

beautifully engraved signatures of Church Officers and people who have

worked on the building— take a look next time you're there!

*(photographs courtesy of David Powell)*





**A.R. PEET LTD**

EST. 1979



Specialist retailer of  
**WOOD, GAS, ELECTRIC &  
MULTIFUEL STOVES**

**01664 822397**

[www.arpeetstoves.co.uk](http://www.arpeetstoves.co.uk)

[info@arpeetstoves.co.uk](mailto:info@arpeetstoves.co.uk)

**Hickling Village Hall  
Strictly Why Not Dance?**

At Hickling Village Hall  
Main Street, Hickling, LE14 3AQ  
**Thursdays - 4pm to 6 ish.**

Ballroom, Latin. An hour with instructor and time to practice afterwards.

£15 per couple - come and try some new moves.

Exercise the mind and the body and reward yourself with a cup of tea and some homemade cake.

Couples only at the moment.

No Booking required.



**Hickling Local  
History Group**



**Information  
Boards Project**

**Views of Hickling—notecards**

FOR SALE

~ 2 Designs ~ £4 per pack ~ Packs of 8 ~  
Available from Pauline Chell 01664 822835



**HICKLING CHURCHYARD – MORE  
THAN JUST GRAVESTONES**

**THE BENCHMARK**

There is a benchmark etched into the outer wall of the Church near the base of the tower and to the left of the 'Tree of Life' stone. The term 'benchmark' is sometimes also known as 'a survey mark'. Such benchmarks are not unique and originally about 500,000 were created across Great Britain. However, with demolition and remodelling of buildings and infrastructure changes, benchmarks are becoming increasingly rare. Originally the majority of these marks were located in urban areas but those surviving are found mostly now in rural areas where there has been less; modernisation



Today, many people do not know what benchmarks are and so perhaps that is a reason they are not maintained and protected. Local planners do not seem to insist they are preserved when properties are externally changed. One benchmark on a house on Hickling Pastures disappeared entirely when the house was extended a few years ago. There is at least one other on Hickling Pastures and this is found on Sycamore Lodge, Green Lane [Dorothy & Jog Chahal's former house]. If you know of any more benchmarks in Hickling or on the Pastures please let the History Group know.

Benchmarks started to appear in Great Britain in 1840 when ordnance survey mapping commenced. Benchmarks were used as a means of making ordnance maps accurate. Benchmarks traditionally are a chiselled-out arrow and a horizontal mark which the surveyors made in stone structures. The idea was that an angle iron could be placed in the horizontal mark to form a 'bench' for a levelling rod. This fixed horizontal line ensured that a levelling rod could be accurately repositioned in the same place in the future.

These benchmarks were fixed points which were used to calculate the height above the mean sea level. A whole systematic network of levelling lines spread across Great Britain. Most villages had about 6-8 benchmarks but towns had many more. They were etched into permanent features such as churches, houses, bridges and even stone troughs.

If the exact height of one benchmark [BM] was known the exact height of the next could be found by measuring the difference in height through a process of spirit levelling. Subsidence, often due to mining, has affected the accuracy of the levelling values today.

Today, surveyors use GNSS [Global Navigation Satellite System] technology and what would have taken or maybe even weeks in the past, now takes just seconds.

Benchmarks remain as a nostalgic reminder of how Britain used to be mapped.

## Hickling WI News

During 2023 talented members of Hickling WI made, collected and donated items for baby bundles that were sent out to mums in Africa, the photographs show them in use by the babies and children and they were greatly appreciated.



It's been a busy start to the year, at our January meeting, we were delighted to welcome the volunteers and their motorbikes from the charity, Blood Bikes. Sally Edwards, our president, presented them with a cheque for £1000 which had been raised through our "Bargain Hunt" Antique Challenge. We hope to support them with a further donation after our Spring Fayre and Fashion Show taking place in March and April respectively. We also welcomed Dawn Rowley, from Hickling Pastures, who gave us a thought-provoking talk on de-cluttering and organising our homes, members were encouraged by Dawn to take up the challenge of implementing at least

one or two of her suggestions.



Our luncheon group, organised by Janice Halford is proving very popular, our January event took place at Sysonby Knoll Hotel in Melton Mowbray and in February we enjoyed our meal at the Neville Arms in Kinoulton. Non-members are welcome to join us,

please contact Janice on 07754 269138 to find our more information or if you are a local establishment and can cater for 20+ at lunchtime we are always keen to try a friendly and welcoming place.

In February we had our Rummikub night and welcomed several new members from the surrounding area and look forward to seeing them at future events. We held our monthly darts nights at our new venue The Neville Arms in Kinoulton, again you don't need to be a member



## Hickling W.I.

Have you ever thought of joining Hickling W.I.? As a friendly and active group we meet at Hickling Village Hall every 3rd Thursday in the month & we're always looking for new members.

We arrange trips/visits in between our monthly meetings so why not pop along to a meeting or Pauline Chell 01664 822835 for further information.

By the way we don't sing Jerusalem or make jam.

**Hopefully see you soon**

**From the Hickling W.I. committee**



### DATES FOR THE DIARY:

**18th April 7.30pm—FASHION SHOW in Hickling Village Hall**

**15th May—Newark & Norwell Gardens**

**11th August—50s and 60s Festival at Crich Tramway Museum**

**27th September—A Day in Stamford**

to attend, for more information contact Liz Vear on

Looking ahead, on Thursday 18<sup>th</sup> April we are holding a Charity Fund raising Fashion Show in Hickling Village Hall at 7.30pm. Tickets are available from Pauline Chell who can be contacted on 01664 822835, clothes will be available to purchase at very reasonable prices. A team has been entered into the Hickling Village Hall Quiz and perhaps we might win the boobie prize again this year!

Other events coming up include an outing to Newark and Norwell Gardens on 15<sup>th</sup> May, a 50's and 60's day over in Derbyshire in Crich Tramway Museum on 10<sup>th</sup> August and a trip to Stamford and Gates Garden Centre on 27<sup>th</sup> September.

Our monthly meeting take place at Hickling Village Hall on the third Thursday of the month and we have members from a variety of local villages and we are always keen to welcome new members to join us.



## HICKLING W.I. HAS ORGANISED A TRIP TO THE CRICH TRAMWAY MUSEUM 50'S & 60'S FESTIVAL SATURDAY 11<sup>TH</sup> AUGUST 2024

This is a full day of festival activities including live music and entertainment. Please book early to ensure a place.

**DRESS UP FOR THE OCCASION**

The coach will pick up at 8.25 at the Neville Arms in Kinoulton

At 8.30 at the end of Bridegate Lane, Hickling

At 9am on Wollaton Road -end of Grangewood Rd, Wollaton

We will be leaving for home about 5pm

Please book by contacting Pauline Chell on 01664 822835

# LADY FRIDAY Are you short of TIME?

I could support you when you're working or on holiday

**PETS**  
Regular or occasional dog walking & pet care at your home

**CHILDREN & ELDERLY RELATIVES**  
Meet children from school or take them to their recreational activities\*  
Accompany elderly relatives to appointments or shopping, or whatever

**HOME**  
Water plants, take mail in & generally check all is well

Do not hesitate to ask - I am mature and versatile!  
References available on request, Inc DBS\*

Angela Sallis, 6 Melton Road, Long Clawson, LE14 4NR  
01664 822597 [angela\\_sallis@btinternet.com](mailto:angela_sallis@btinternet.com)

## HICKLING WI HAS ORGANISED A TRIP A DAY IN STAMFORD FRIDAY 27<sup>TH</sup> SEPTEMBER 2024

A coach will take us to Historic Stamford on Market Day, where we will have time to explore all that Stamford has to offer – churches, museums, individual shops, The George Hotel etc.  
On the way home we will stop at Gates Nursery  
The coach will pick up at 8.25 at the Nevile Arms, Kinoulton  
At 8.30 at the end of Bridegate Lane, Hickling  
At 8.40 at the Tap and Run in Upper Broughton  
Please book by contacting Pauline Chell on 01664 822835  
£20 per person

### WANTED BY HICKLING W.I.

Has anyone a Rummikub boxed game they no longer require?  
The Hickling WI would be delighted to receive these for their games evenings.  
Please contact Pauline Chell 01664 822835

# Belvoir Foot Health Clinic






DipCFHP MPSPract MPSP5909

07714876006

[belvoirfothealthclinic.co.uk](http://belvoirfothealthclinic.co.uk)

Suite G, Cotgrave Business Hub, Candleby Lane, Cotgrave, Nottinghamshire, NG12 3US.

Tuna and Stilton Layered Salad.

Ingredients

- 200g white or blue Stilton
- 2 tins tuna
- 400g tinned or boiled new potatoes.
- 2 tablespoons cooked peas
- 1 large onion.
- 2 large carrots
- 1 small tin of sweetcorn( optional )
- 4 hard boiled eggs
- 5 - 6 tablespoons of mayonnaise.
- Seasoning to taste.
- Tomato to garnish - optional.

Method

1. Dice the potatoes.
2. Finely chop the onion.
3. Grate carrots.
4. Mix the potatoes, peas and onions in a bowl with 2-3 tablespoons of mayonnaise and seasoning well.
- Using a high sided dish so the layers can be seen,
5. Layer this mix in the bottom of the dish.
6. Flake the tuna and layer on top of the potato mix.
7. Layer the grated carrot and sweetcorn on top of the tuna.
8. Finely chop the eggs and mix with the finely crumbled Stilton and mix together with 2-3 tablespoons of mayonnaise .Season to taste.
9. Layer this on top of the carrot and sweetcorn.

Garnish with finely diced or sliced tomato.

Working with Long Clawson Dairy, Hickling WI have produced 12 new Stilton recipes, to see you you through the year: here is recipe 5!



## Letter from St Luke's

An early celebration of Easter will no doubt have commenced by the time this magazine goes to print, but as I write the last weeks of Lent are still counting down to Easter Sunday. During Lent we are encouraged to prepare for Easter by actively jettisoning those habits which we know to be detrimental to our health of body, mind and spirit but find difficult to shake off. To deploy the acronym GUS, we are called to 'Give Up Something'. Having achieved a detoxification / spring clean we are then encouraged to embrace its brother acronym TOM to 'Take On More' of the beneficial and enriching aspects of life. On discussing the potential for TOM, now that GUS has nearly completed his work, at a school assembly recently one of the youngest children informed me, with great solemnity and perhaps displaying a wisdom beyond her years, that she was going to listen more. The radio station that very morning had been lamenting that, while we live in an age dominated by a plurality of means for communication, everybody seems to be speaking without any pretence of making an effort to listen. Someone I make a conscious, and rewarding, effort to listen to is Les Norman, a member of the church family locally. He writes a weekly piece to encourage and amuse, which he calls 'Minutes' - less than a minute to read but I believe to be a lasting gift for the reader. With his permission I've posted one below, some words we can all engage with as the light and joy of the Easter season dawns upon us.

Revd Paul.

## HIS MASTER'S VOICE

Last week, an 89 year retired pastor drove 50 miles to see me face to face. Half way through the journey, he realised that he had left his hearing aid on the kitchen table, so he returned home. When he finally arrived, he was still stone deaf until by sign language, we agreed that hearing aids work better when put in the ear rather than kept in the pocket. With communication renewed, he had something good to tell me. I listened. I learned and for sure, I will lead better for what I heard. Way back in the old days, another older priest told a child called Samuel that when he heard his name whispered he should reply, "Speak Lord, for your servant is listening." This is quite contrary to the popular notion of, "Listen Lord, for your servant is speaking." True, my deaf pastor friend may hear far fewer words than most of us do, yet in silence he hears his Master's voice and because of that when he speaks he has much to say.

Listen Lord, your servant is learning. To be quiet.

Speak soon.

### St. Luke's Church - Dates for the Diary

|            |                                           |
|------------|-------------------------------------------|
| 29th March | Good Friday Walk                          |
| 27th April | Concert with the Bridge Singers           |
| 18th May   | Belvoir Angel Day; Hickling History Group |

## Services at St Luke's Churches from Easter to Trinity Sunday 2024

| Date   | Day                      | Kinoulton |                 | Hickling |                                          | Upper Broughton |                                   |
|--------|--------------------------|-----------|-----------------|----------|------------------------------------------|-----------------|-----------------------------------|
|        |                          | Time      | Service         | Time     | Service                                  | Time            | Service                           |
| 28 Mar | Thursday of Holy Week    |           |                 | 7:00 pm  | Holy Communion & Stripping of the altars |                 |                                   |
| 29 Mar | Good Friday              | 2:30 pm   | Short service   | 1:30 pm  | Short service<br>Walk to Kinoulton       | 12:00 noon      | Short service<br>Walk to Hickling |
| 31 Mar | <b>Easter Day</b>        |           |                 |          |                                          | 10:00 am        | Holy Communion                    |
| 7 Apr  | 2nd Sunday of Easter     | 9:00 am   | Holy Communion  | 6:30 pm  | Evening Prayer                           | 10:00 am        | Morning Prayer                    |
| 14 Apr | 3rd Sunday of Easter     | 11:00 am  | Morning Prayer  |          |                                          | 10:00 am        | Morning Prayer                    |
| 21 Apr | 4th Sunday of Easter     | 11:00 am  | Morning Prayer  | 10:00 am | Morning Prayer                           | 9:00 am         | Holy Communion                    |
| 28 Apr | 5th Sunday of Easter     | 11:00 am  | Morning Prayer  | 6:30 pm  | Holy Communion                           | 10:00 am        | Morning Prayer                    |
| 5 May  | 6th Sunday of Easter     | 9:00 am   | Holy Communion  | 6:30 pm  | Evening Prayer                           | 10:00 am        | Morning Prayer                    |
| 9 May  | Ascension Day            |           | to be announced |          |                                          |                 |                                   |
| 12 May | 7th Sunday of Easter     | 11:00 am  | Morning Prayer  | 9:00 am  | Holy Communion                           | 10:00 am        | Morning Prayer                    |
| 19 May | <b>Pentecost</b>         | 11:00 am  | Morning Prayer  | 10:00 am | Morning Prayer                           | 9:00 am         | Holy Communion                    |
| 26 May | Trinity Sunday           | 11:00 am  | Morning Prayer  | 6:30 pm  | Holy Communion                           | 10:00 am        | Morning Prayer                    |
| 2 Jun  | 1st Sunday after Trinity | 9:00 am   | Holy Communion  | 6:30 pm  | Evening Prayer                           | 10:00 am        | Morning Prayer                    |

### Ministry Team:

Priest in charge: Revd Paul Massey (Rector of Cotgrave):

Email: [rector@allsaintscotgrave.co.uk](mailto:rector@allsaintscotgrave.co.uk) Tel. 01159 892223

Lay Ministers:

Sheila Hill. Tel. 01949 81096 e-mail [sahill18@btinternet.com](mailto:sahill18@btinternet.com)

Robert C Jones Tel 01664 822916 e-mail [robert.c.jones02@gmail.com](mailto:robert.c.jones02@gmail.com)

# STEVEN M. DAW

PLUMBING, HEATING and GAS SERVICES

Plumbing work – repairs; Central heating and boiler installations; Boiler servicing; Central heating power flushing; Bathroom design and installation

Over 30 years experience

Based in the Vale of Belvoir

Tel: 01664 822648 - Mobile: 07860 285031

Email: [stevendaw@btinternet.com](mailto:stevendaw@btinternet.com)

[www.stevendaw.com](http://www.stevendaw.com)



**THE BRIDGE SINGERS**  
COMING  
TO SING FOR  
**ST. LUKE'S CHURCH**  
MAIN STREET, HICKLING,  
LE14 3AQ

**SATURDAY 27TH APRIL**  
**7.30 PM - 9.00 PM**  
**MUSIC FOR EVERYONE**

**TICKETS: £8.00 INC. REFRESHMENTS**  
**FROM ALEX ON 07788 518156**

OR

**PAY ON JUST GIVING**

**[WWW.JUSTGIVING.COM/CROWDFUNDING/ALEXANDRA-THOMAS-1](http://WWW.JUSTGIVING.COM/CROWDFUNDING/ALEXANDRA-THOMAS-1)**

**YOU WILL RECEIVE CONFIRMATION**  
**AND**  
**YOUR TICKETS WILL BE ON THE DOOR**

## Bringing the Church Building To Life Day by Day

We have several events organised for 2024:

19th April 10 - 11.30 am Visiting Bellringers

27th April 7.30-9pm  
£8 over 12s  
inc. refreshments

**Bridge Singers**  
"Music for Everyone"

18th May 10 - 4

**Belvoir Angel Day**  
Talks in churchyard,  
displays, refreshments all  
day in the church

28th June 7.30 pm  
£8 over 12s  
Inc refreshments

**A Night at the Musicals.**

Lisa and Paul

13th July 10.00 am

**Visiting Bellringers**

4th October

**History Group Talk by**  
**Peter Liddle** on the  
ancient coffin lid etc.

A building of this size and age is expensive to keep open, and we need to raise the maintenance costs every year. Please help us in this mammoth task by coming along for a range of events, enjoy yourself and contribute to our building funds.

**All the above events have been organised so that we contribute a range of leisure events in the village and help the fund raising efforts. Contact Alex on 07788 518156 for tickets or more information.**



### **Weekly Coffee Mornings** **on Thursdays from 10.30am.**

Come and meet your friends, enjoy homemade cakes etc. and a warm welcome. No set charge, just a voluntary donation if you can.

### **This is your Village Church.**

If you would like to support it in any way please contact:

Alex Thomas at [alex28thomas@btinternet.com](mailto:alex28thomas@btinternet.com)

**Could you offer a cake occasionally? Help with cleaning twice a year by rota? Help at events etc?**

We are located in  
Hickling Village Hall  
Monday – Friday  
9.15am-3.15pm  
during term time.  
You can visit our  
website



hicklingpreschool.co.uk for more information on how to get involved or  
how to register your child.

---

## Hickling Film Club

Films in Hickling Village Hall. Free drinks and nibbles. No fixed charge  
– just pay a reasonable sum please.

**Supernova** - A  
gay couple -- one  
a musician, the  
other a novelist --  
embark on a road  
trip as dementia  
starts to take hold  
of one of them.  
Colin Firth and  
Stanley Tucci  
dazzle as a cou-  
ple facing their  
fears. The veteran



pair are on magnificent form in a drama about love and mortality that  
is all the more powerful for its restraint. Excellent reviews. Tuesday,  
April 9<sup>th</sup> at 7.30.

**The Quiet Girl** - A nine-year-old girl from a dysfunctional family goes  
to live with distant relatives for the summer. Living with a middle-  
aged farm couple, she discovers a new way of living. It is a beautiful,  
heart-breaking and hopeful film that will leave you deeply affected.  
Highly recommended. It has won many awards. Tuesday, April 23<sup>rd</sup>  
at 7.30.



**Anatomy of a Fall** - A tantalising screenplay keeps the audience  
guessing in this gripping French drama in which superb lead actor San-  
dra Hüller plays a woman suspected of her husband's murder. The on-  
ly reliable witness, their son, happens to be blind. The film does not  
signpost the traditional twists and turns and dramatic reversals, but  
keeps a cool distance, letting us wonder if Sandra is guilty or not, and  
we are kept guessing until the end. Excellent reviews. Tuesday May  
7<sup>th</sup> at 7.30.



# PROPER ROASTS MENU

Available on Sundays pre-order advised

**Whitebait** Crunchy whitebait on a bed of rocket with homemade tartare sauce. £6.50

**Chicken Goujons** Crispy chicken goujons with fresh maple-roast beefy pork cubes on skewers with apple sauce. £7.00

**Pork Skewers (GF)** Maple-roast beefy pork cubes on skewers with apple sauce. £7.00

**Soup (V)** Homemade roasted root vegetable soup served with rustic bread and butter. £6.00

**Cauliflower Bites (VE & GF)** Golden cauliflower bites coated in Moroccan-style quinoa breadcrumbs, paired with sweet chilli sauce. £6.50

## PROPER ROASTS

Delicious locally sourced meats, crispy, fluffy roasties, smooth mash, tasty veg, plenty of gravy and a Yorkshire pudding - a proper Sunday roast!

**Nottinghamshire topside of beef** Indulge in our mouth-watering 21-day aged topside of beef, seasoned to perfection with a flavourful blended herb crust. £15.50

**Supreme of Chicken** Delectable free-range chicken, slow-roasted to perfection, and sprinkled with a generous amount of tarragon and a dash of white wine. Accompanied by an irresistible stuffing. £8.50

**Slow-roasted pork belly** Prepare your taste buds for a mouthwatering experience! We're talking slow-roasted older and apple pork belly, paired with savory stuffing and tangy apple sauce. £15.50

**Porcini Mushroom Wellington (Ve)** Satisfy your cravings with a scrumptious and heart-warming dish served with all the trimmings and vegan gravy. If you're not vegan, make sure to add a Yorkshire pudding. £15.50

## SIDES TO SHARE

Tasty slides to share between friends - Serves 2-4

Cauliflower cheese £6.50

Mimi Sausages £6.50

Bowl of roasties £4.50

## LITTLE PEOPLE

Mini meals for tiny tummies. Our kids dinners are small and priced accordingly. If you have big kids or if your days of being a child are long behind you, you could ask for a large kids dinner.

**CHICKEN GOUJONS WITH CRISPY FRIES**  
**COD BITES WITH CRISPY FRIES**  
**CAULIFLOWER BITES WITH CRISPY FRIES (VE)**  
**ADD BEANS OR PEAS**  
SMALL £5.00\*  
LARGE £9.50

**MINI ROASTS**  
Choose from  
MINI CHICKEN ROAST  
MINI BEEF ROAST  
MINI PORK ROAST  
£10 EACH

A smaller roast dinner for smaller appetites

\*small kids portions are not available to grown ups



01664 822225 - see back page!



## BITS & BITES

### Whitebait £6.50

Enjoy a batch of lightly coated and fried whitebait. They are crispy, crunchy, and oh so moreish. With peppery rocket, red onion, and a homemade tartare sauce that's out of this world.

### Spiced Cauliflower Bites (VE & GF) £6.50

Experience the deliciousness of golden cauliflower bites coated in Moroccan-style quinoa breadcrumbs, paired with sweet chilli sauce for a tantalizing treat.

### Little Pigs £6.50

Enjoy freshly baked, bite-sized sausages from our local butcher. Served with a zesty mayo dip that has a kick of English mustard.

### Vegetable Soup £6.50

Let your taste buds bask in the warm hug of a delicious homemade veggie soup, snuggled up with a crusty roll with a portion of butter.

### Chicken Goujons £7

Get your taste buds ready for a treat! These chicken goujons have a crispy crunch on the outside and juicy chicken breast on the inside. Served with fresh rocket and tangy BBQ sauce.

### The Stilton Ones £8.50

Everything that is good! Crispy fries, fried mushrooms, Long Clawson Stilton sauce, chives and crispy onion.

### Plough Poutine £8.50

With it's origins in Canada, poutine is too good to leave off our menu. Its Crispy fries, dressed in our signature truffle and parmesan, loaded with Long Clawson melting cheese and our house gravy.

## FANCY FRIES

### Herby Fries £4.50

Indulge in our crispy house fries, coated in a hush-hush medley of herbs.

### Truffle & Parmesan £5

Transform plain ol' house fries by adding heaps of parmesan and a drizzle of truffle oil. Trust us, it's a game changer!

### Garlic & Parmesan £5

Garlic, herbs, and cheese: a triple treat of deliciousness. Once you've savoured their awesomeness, you'll be committed for life!

## PASTRY PIES

This savory dish features a buttery shortcrust base and flaky puff pastry top, served with a jug of delicious gravy and a choice of two sides.

**Side 1** Proper chips, Fries, Mash  
**Side 2** Seasonal Veg, Mushy peas

### Steak & Stilton

We're talking top-notch steak sourced right around the corner, slow-cooked in a mouthwatering gravy and topped off with a thick, decadent slice of Long Clawson Stilton. £15

### Lamb & Mint

Get ready for a flavour sensation! Tender chunks of Melton Mowbray Lamb swimming in a dark and rich gravy, all dolled up with a hint of mint sauce. £15

### Chicken & Mushroom

Prepare to indulge in a heavenly pie, oozing with juicy roasted chicken, earthy mushrooms, and savory leeks, all cuddled up in a luscious white wine and tarragon sauce. £14

Available Weds, Thurs & Saturday



### Steak & Stout

Sink your teeth into our locally-sourced prime steak, slow-cooked with Round Corner Reverend Hooker Stout. Plus, what better way to wash it down than with a tasty local stout? £14.50

### Hominy pie (V)

Picture a golden, flaky crust hugging a scrumptious filling of potatoes, onions, leeks, spinach and cheese - simply divine! £12.50

### Minced Beef & Onion

This beef and onion pie is a delicious blend of simplicity and flavor! With minced beef, onions, and a classic beef gravy, it's a real treat for your taste buds. £12.50

Our pies are handmade with love and care. They're like little works of art that take time to create.

We do our best to keep all our pies stocked, but sometimes demand is high, and we sell out fast.

To save yourself from the heartbreak of a sold-out pie, pre-book your order!

## MASH TOP PIES

Indulge in high-quality ingredients, expertly cooked and topped with fluffy mashed potato. Comes with seasonal vegetables.

### Fisherman's Pie (GF)

Get hooked on this classic fish pie recipe, featuring a medley of cod, salmon, smoked haddock and prawns, in a dill and parsley sauce, capped off with a cheesy mash top. £15

### Shepherd's pie

Enjoy a classic shepherd's dinner with slow-cooked lamb mince, soft and sweet onions, savoury lamb gravy topped off with golden mashed potatoes, and melted cheese. Delicious! £13.50

### Lentil cottage pie (VE, GF)

Feast on our scrumptious lentil cottage pie: a hearty blend of lentils, veggies, and herbs, baked to perfection beneath a fluffy layer of mashed potatoes. £12.50

## EXTRAS

Crispy fries £3.50  
Proper chips £4.00  
Onion rings £3.50  
Stilton sauce £3.50  
Add melting cheese £2.00

## BURGERS

Gluten free buns available

All burgers served on a shiny brioche bun with crispy fries and a tangy red slaw.

Upgrade to Herby Fries for £1.00

### Plough Burger

Get ready to sink your teeth into two juicy double 5oz patties, crispy bacon, Long Clawson Stilton, tomato, and red onion. £16.50

### Hunter's Chicken

2 succulent southern-style chicken breasts, crowned with crispy bacon, drizzled with BBQ sauce, and smothered with a generous helping of Long Clawson's melting cheese. £16.50

### Simple Cheeseburger

Enjoy a flavourful, hand pressed burger with a melty cheese blanket, tomato, red onion, and our house burger sauce. £12.50

### Simple Chicken

Enjoy a mouth-watering southern-style chicken breast. The chicken is perfectly paired with fresh lettuce, tangy tomato, onion, and a hint of mayonnaise. £12.50

### Spicy Lentil (Ve)

Indulge in a delectable lentil patty with crunchy cucumber, charred red pepper, tomato, red onion and a dollop of refreshing vegan mint mayo! £12.50



01664 822225 - see back page!



## PROPER PIZZAS

### No. 1 Buffalo Margarita (V)

Pomodoro, Mozzarella, Buffalo Mozzarella, fresh basil £9.50

### No. 2 Aratro (V)

Garlic butter, Long Clawson stilton, roasted mushroom, onion jam. £10

### No. 3 Pepperoni

Pomodoro, mozzarella, pepperoni, caramelized red onion. £10

### No. 4 Ham & Mushroom

Pomodoro, mozzarella, cotto ham, roasted mushroom, truffle oil. £11

### No. 5 Prosciutto & Rocket

Pomodoro, mozzarella, prosciutto, rocket, parmesan. £11.50

### No. 6 Veggie One (V)

Pomodoro, mozzarella, roasted red pepper, mushroom, caramelized red onion, olives, oregano, rocket. £11.50



## AVAILABLE ON FRIDAYS FROM 4PM

### SIMPLE PIZZAS

No. 10 Cheese & Tomato (VE) £8  
No. 11 Pomodoro, Garlic & Oregano (VE) £7  
No. 12 Garlic & herb (VE) £8  
add cheese + £2.00  
Kids Cheese and Tomato (V) £5  
Kids Pepperoni £6.50

### CALZONE

Pizza and Pies Collide: The Folded Pizza Pie! Introducing our calzone - a delicious, savoury treat that will satisfy your cravings bite after bite.

All of our calzone come with a side salad of rocket and parmesan dressing and garlic butter for your crusts.

### Meaty Calzone

Pomodoro, mozzarella, pepperoni, cotto ham, roasted chicken, caramelized red onion. £14.50

### Aratro Calzone (V)

Garlic butter, Long Clawson stilton, roasted mushroom, onion jam. £12.00

### Veggie Calzone (V)

Pomodoro, mozzarella, roasted red pepper, mushroom, caramelized red onion, olives, oregano, rocket. £13.50

### EXTRA TOPPINGS

Who are we to tell you how you should have your pizza or calzone?

Tweak one of our Proper Pizzas or start with a cheese and tomato base and go to work with these great extras.

£1. Toppings - Caramelized Red onion, Onion Jam, Roasted mushrooms, Roasted red peppers, Olives, Pineapple, Jalapenos  
£2 Toppings - Buffalo mozzarella, Pepperoni, Cotto ham, Prosciutto, Roast chicken, Long Clawson Stilton.



# Nottinghamshire County Show

Experience the best of farming & rural life from your county



## 11<sup>th</sup> May 2024

AT NEWARK SHOWGROUND

[nottinghamshirecountyshow.com](http://nottinghamshirecountyshow.com)

\*18 & under free of charge when accompanied by a paying adult and will still require a ticket.  
\*\*Discounted tickets are available until midnight 2nd May 2024, thereafter gate prices will apply.

16 YEARS & UNDER  
**FREE**  
13-15 YEARS  
**£13**  
TICKETS

NG24 2NY

Scan for tickets



# WYSALL ART FAIR

18 & 19 MAY 11 a.m. to 4 p.m.

Wysall Village Hall - NG12 5QS

## ADMISSION FREE!

ORIGINAL PAINTINGS & ARTWORKS  
FROM LOCAL ARTISTS FOR SALE

\*\*\* *LIVE MUSIC* \*\*\*

HANDMADE PAINTS FROM  
JACKMAN'S ART MATERIALS

HOMEMADE CAKES & REFRESHMENTS

Wheelchair access and facilities



Tree Felling  
Lopping,  
Pruning,  
Ground  
Clearance,  
Tree Surgery,  
Fencing,  
Planting,  
Logs,  
Wood  
Chipping,  
Hedges  
Maintained.

Fully Insured

Tel: 01664 822185



**Keith Wadkin & Son**  
Tree Specialist  
Hickling  
Melton Mowbray, Leics.  
LE14 3AQ

Established 1959

**COUNCILLOR'S NEWS LETTER - For Hickling, Upper Broughton, Kinoulton, Hickling Pastures, Colston Bassett & Langar cum Barnstone from Cllr. Tina Combellack**  
[Cllr.tcombellack@rushcliffe.gov.uk](mailto:Cllr.tcombellack@rushcliffe.gov.uk)  
SPRING 2024

**The digital version of Rushcliffe Reports Spring 2024 is out now!**

Welcome to the first ever digital edition of Rushcliffe Reports featuring some of our latest news and partner initiatives.

You can also look out for details on our key events with dates announced for Proms in the Park, Lark in the Park and Taste of Rushcliffe later this year! The publication is available to view online. If you have any questions or want to know more on any of the updates please email [media@rushcliffe.gov.uk](mailto:media@rushcliffe.gov.uk)

Rushcliffe Reports on CD An audio version of Rushcliffe Reports is available for blind and partially-sighted people. Contact us to get the latest edition by emailing [media@rushcliffe.gov.uk](mailto:media@rushcliffe.gov.uk) or call 0115 914 8555.



**Congratulations to Langar cum Barnstone on the opening of their new Village Hall.**

A wonderful achievement providing community accommodation for the 21st century with the latest technology and energy efficiency.



**More United Kingdom Shared Prosperity Funding Awarded**


Rushcliffe has awarded UKSPF Government monies to repair the fabric of the ancient remains of St Mary's Church in Colston Bassett to keep it safe for public to visit.

**RURAL CRIME**

Rural Crime is still a high priority for the police, with farm machinery thefts, hare coursing and fly tipping to mention just a few. There is another Rural Crime event being held at Oddhouse Farm on Wednesday 1st May 7-9pm aimed at the farming community. I know the days are getting longer and farming commitments will be growing, but please try and join us – your highlighted concerns and engagement are invaluable.



**Policing In Nevile Ward**

 **Nottinghamshire POLICE**  
Reporting Crime and Incidents  
**PC1946 Saskia Mills & PCSO 6258 Philip Evans**  
**Email: [Saskia.Mills@Notts.Police.uk](mailto:Saskia.Mills@Notts.Police.uk) or [Phillip.Evans@Notts.Police.uk](mailto:Phillip.Evans@Notts.Police.uk)**

-----

If you need to speak to the police regarding any local Policing issues they can be contacted on **101 ex. 8116711** or the Control Room where a message can be left.  
Cotgrave Police Station (ext. 8116711) or drop a note into Cotgrave Police Station

-----

**If you have information about crime and you want to report it anonymously Call CRIMESTOPPERS 0800 555111**

**ASK FOR ANGELA**

The Borough Council is committed to unanimous support for Rushcliffe to reduce

# HANWELL WINE ESTATE

www.hanwellwine.co.uk

Award-winning English wine from  
Nottinghamshire family vineyards est.1975



- Vineyard Tour and Wine Tasting
- Tour and tasting gift packages from £25
- Celebrate: birthday, anniversary, wedding, hen-do
- Traditional method vegan English Sparkling Wine
- Still White, Rosé, Cherry & Mead plus our new Red wine
- 5k Charity Wine Run – Sunday 19<sup>th</sup> May 2024
- Craft Fair – Sunday 7<sup>th</sup> July 2024
- **Open 11am-4pm Fri-Sun**
  - Café bar now closed for the winter, reopens May '24
  - Wine shop open all year
  - DIY vineyard trail and wine tasting at your leisure, all year

Full details and bookings [www.hanwellwine.co.uk](http://www.hanwellwine.co.uk)

## Rural Antics Art, Craft and Skills Workshops



- |     |                                                                                                                                                                                                                                |
|-----|--------------------------------------------------------------------------------------------------------------------------------------------------------------------------------------------------------------------------------|
| Apr | Vincent Van Gogh inspired art workshop, Bookbinding, Watercolour for beginners, Glass plaque or bowl, Stacking ring, Quentin Blake style illustration, Macrame bottle bag, Willow weaving, Pyrography, Marquetry, Cyanotype... |
| May | Charcoal still life drawing, Creative writing, Stained glass mosaic, Felt flowers, Willow weaving, Photography walk, Lino printing, Pencil drawing for beginners...                                                            |
| Jun | Straw work with plaits, Traditional round basket making, Owl/Gonk carving, Modern calligraphy, Glass painting...                                                                                                               |

Hanwell Wine Estate, Hickling Pastures, South Notts, LE14 3QG

hello@hanwellwine.co.uk Tel: 01949 81393

**Rural Crime Forum**  
Strictly for our **Rushcliffe Farmers**

7pm - 9pm Wednesday 1st May 2024  
Oddhouse Farm  
Colston Bassett Lane, Owthorpe, NG12 3SF  
Very kindly hosted by J Morley

Andy Guy County Advisor National Farmers Union  
Insp Tim Cuthbert & Sgt Brett Price Nottinghamshire Police Neighbourhood Team  
Helen Ridley Nottinghamshire Police Rural & Wildlife Crime Manager  
David Elms Nottinghamshire Police Rural Crime Prevention Officer  
Sgt Vince Saunders Nottinghamshire Police Drone Team  
Officers from the Leicestershire Police Rural Crime Team  
Catherine Evans RBC Service Manager for Economic Growth & Property  
Cllr Rob Inglis RBC Portfolio holder for Environment & Safety  
Jo McQuat Farm Watch Co-Ordinator

This is another great opportunity to be updated with the latest news and developments directly from the Police and Partners in tackling and preventing crime within our local Farming Community

This is a two way networking meeting for questions, ideas and discussions so it is important for everyone to attend

For further information call Jo McQuat 07790 846111 — Rob Inglis 07786015450

**#Ask for Angela**

“ HI I'M ANGELA,  
ARE YOU ON A DATE THAT ISN'T WORKING OUT? DO YOU FEEL LIKE YOU'RE NOT IN A SAFE SITUATION?  
IS YOUR DATE NOT WHO THEY SAID THEY WERE ON THEIR PROFILE? DOES IT ALL FEEL A BIT WEIRD?  
IF YOU GO TO THE BAR AND ASK FOR 'ANGELA' THE BAR STAFF WILL KNOW YOU NEED SOME HELP GETTING OUT OF YOUR SITUATION AND WILL CALL YOU A TAXI OR HELP YOU OUT DISCREETLY - WITHOUT TOO MUCH FUSS ”

Ask for Angela can be used by anyone

Call 101 for non-emergency enquiries, to report an incident or get help.  
Call 999 if it's an emergency or a crime is in progress.

Nottinghamshire Support After Sexual Violence  
helpline: 0115 941 0460

nottpolice f t i n  
www.nottinghamshire.police.uk

violence against women and girls and has been promoting the 'Ask For Angela' campaign. I helped promote the campaign recently at the Unicorn in Langar. Should anyone feel they are in an unsafe situation whilst out at a pub or restaurant they can approach someone at the bar and ask for Angela. The staff will be trained to discretely handle the situation and take you to a place of safety. Whilst this is aimed at women and girls, men can also ask for Angela if they are feeling threatened or abused. - there is no discrimination.

### MORE DATES FOR YOUR DIARY

- **May 11th Nottinghamshire County Show at Newark Show ground** – Showcasing the best of farming, countryside and rural life celebrating our local agricultural community with attractions including livestock, equine, local food producers and craft stalls, countryside competitions, traders and more!
- **Don't forget the 2nd May is Polling day** again when you will be voting for a new East Midlands Mayor who will be paving the way for a combined County Authority Notts/ Derbys., allowing access to a whole new raft of funding. Remember you need photo ID to vote.
- West Bridgford — **29 June 2024 ARMED FORCES PROMS IN THE PARK** 12:00 pm to 9:00 pm

Cllr T Combella.

## Vale of Belvoir Branch

### Royal British Legion

#### 80th Anniversary of the D-Day Landings

Operation Overlord started on 6th June 1944 after 2 years in planning. 156,000 men, 11,000 aircraft and 7,000 ships moved into action in the greatest military assault the world has ever seen. Central to the plan was an amphibious assault on a 60 mile stretch of the Normandy beaches, divided into sectors codenamed Sword, Juno, Gold, Utah and Omaha, supported by airborne landings and bombing of German strongholds. Diversionary tactics to distract German units included dropping hundreds of dummy paratroopers at Pas-de Calais. Advancement came at a high price. On D-Day alone, there were more than 10,000 casualties, and 4,400 paid the ultimate price.

The Battle of Normandy lasted till the end of August. British, American, French, Canadian and Allied forces captured towns and cities in hard-fought battles, pushing German forces beyond the river Seine. They paved the way for the liberation of Western Europe from Nazi occupation, making D-Day and the Battle of Normandy among the most significant victories of the Second World War.

In the planning stage, 2 years before, the War Office had requisitioned huge areas of land and properties along the South Coast spreading from Devonshire to Kent. Villages, farms, and stately homes were compulsorily evacuated to make way for the military build-up. Allied forces performed large-scale rehearsals for their D-Day roles months before the invasion. On 28th April at Slapton Sands in Devon, selected for its similarity to Utah beach, US forces were engaged in a live firing exercise. Two German E-boats in the vicinity discovered and attacked the convoy positioning itself for the landing exercise. Two of the fully laden landing craft were torpedoed and sank with loss of life. By the end of the day, 749 US soldiers had lost their lives. The site is now an International War Memorial. Residents who lived in or near our village in the 80's and 90's will remember Peter James at the Post Office in Kinoulton. His father "Jimmy James" also lived there. When Jimmy jumped out of the landing craft on D-Day he found himself out of his depth and the weight of his equipment pulled him under. He was in danger of drowning, or even worse, being crushed under the vessel. His friend alongside managed to pull him up by his webbing and together they safely reached the beach. They became close friends, and after the war, they met up each year on the anniversary for the remainder of their lives.

Michael Chapman



## Parish Council for Hickling & Hickling Pastures.

Summary of minutes from meetings held on 29<sup>th</sup> January and 20<sup>th</sup> February 2024.

Full Minutes are published on Parish Noticeboards and at <https://hickling-pc.gov.uk>.



### Raised by parishioners:

Bench in the Parish cemetery has been observed to have been damaged and requires fixing – Clerk to investigate getting this fixed.

Parishioner noted the large amount of cars around the Wharf recently. Cllr Playle has also observed a lot of cars recently and cannot always be attributed to the tea rooms as it is also busy when it is closed. This increase in cars is causing difficulty with traffic passing. However, the PC noted that the only solution would be to restrict parking but this would be hard to police, it was also felt that a car park would be a bad solution as it would encourage even more traffic to the village.

Dog bins along the canal path are rather full and need emptying – this usually happens on a Thursday morning but will be kept an eye on and reported to streetwise team if needed.

### Administrative:

Cllr Playle opened the meeting on 20<sup>th</sup> February with a reminder of meeting protocol; asking that members of the public limit conversations amongst themselves and to please raise their hand and wait to be called on when wishing to raise a point

Formation of a planning working group to discuss planning matters arising where the deadline falls before the next full PC meeting - AGREED

### Planning:

23/02275/FUL; Rob Brown, Erection of 9 new buildings and extension of bungalow and associated landscaping, Haulage contractors, Bridegate lane. RESOLVED – OBJECT. The PC consider that the proposal contravened 3 (H9-local design, H10 – housing provision and H14 – housing mix) policies of the Hickling Neighbourhood Plan. There were also serious concerns raised about the provision for parking at the site and it being situated on the busy main road with no alternative parking. In concluding, the PC stated that it supports the use of brownfield sites for development however, they felt that this application was not sympathetic to the area, poses a safety risk with the increase of cars turning on a blind bend and could lead to overdevelopment of the area.

23/01974/FUL; Mr and Mrs Dhaliwal, New build dwelling at Willow House, Melton Road, Hickling Pastures. APPLICATION REFUSED

Permission granted to fell sycamore and London plane tree at 2 Marshes Paddock

Permission granted to continue rotation system of pollarding willow and occasional ash around the ponds to rear of Glebe Farm.



### **Finance & Assets:**

The PC held their annual Budget and Precept meeting on 29<sup>th</sup> January to agree a budget and set the precept for the 2024/25 financial year. It was noted by Cllr Prosser that last year an overspend budget had been agreed however, with cautious spending this year and an increase in cemetery fees the PC is in a much stronger position. However, this year there was a lot of cemetery activity and hence income, this cannot be relied upon next year therefore to meet spending requirements for the coming year a further increase in precept is required otherwise the PC would need to choose not to pay some community groups. Full budget and precept information is available on the PC website and notice boards.

### **Environment:**

Tree planting – Cllr Conway to liaise and update further when permissions have been sought from land owners.

Flooding in Hickling has been discussed at recent meetings of the parish council – Cllr Playle has met various members of the parish to walk around the village flood sites and discuss possible responses to flooding. Clerk has circulated information about flood warden schemes and a flood warden scheme was agreed at the meeting on 20<sup>th</sup> February with villagers to store signs and receive training to deploy signs when required. Possible blocked culvert at the South end of the village to be investigated.

Cllr Playle raised concerns about a missing footpath sign and apparent overgrown brambles on the stile leading off Green Lane. Concerns were raised that this was a deliberate attempt to make the footpath less obvious to reduce use and lead to closure. Clerk to write to NCC to make them aware and arrange replacement of the sign.

Demarcation of the unconsecrated section of the parish cemetery – Cllr Combella has acquired some stones and painted them. These will be positioned when the weather improves.

Fly tipping noted in Bridegate lane and Long Clawson lane – Clerk to contact streetwise to arrange removal.

### **Highways & Street Furniture:**

Installation of the new PC notice board has begun in Hickling Pastures, name change is in progress hopeful completion by the end of March.

The road surface on the A606 in Hickling Pastures was raised (20<sup>th</sup> Feb) as there

are concerns that the situation is becoming quite treacherous and an accident likely. Clerk to write to NCC, Neil Clarke and Cllr Combella to see if anything can be done.



Traffic calming in Hickling was discussed (20<sup>th</sup> Feb) as parishioner felt that recent surveys had not been inclusive of the whole village. After taking advice from NCC, the PC concluded that we are unlikely to meet criteria for traffic calming however, and independent traffic survey has been carried out by a concerned resident which did not involve HPC.

### **Community Engagement:**

Community litter pick arranged for 17<sup>th</sup> March. Volunteers to meet 10am at the Wharf in Hickling.

### **Ward Member report:**

Cllr Combella reported from the meeting of the Trent Valley Drainage board at which Rob Holt was elected to represent Hickling and the Rushcliffe South division. Case for removing silt from the Dalby brook was raised and assurances given that this would occur once the land has dried out.

Cllr Combella reported for meetings of the Police priority group settings and the Rushcliffe South villages community safety group – I required speed watch training is available from Langar who have already received speed watch training.

Flood grants and flood warden training is available

Flooding at the south end of the Main Street has been requested and NCC will inspect and address block gully soon.

### **Correspondence:**

PC invited to comment on authority wide design code – a district wide version of the Hickling Neighbourhood plan. Cllr Playle wished to add comments relating to flood attenuation and alleviation plans for developments. Cllr Rowe added comments about traffic calming strategies and a parishioner suggested regulations to prevent increased density of buildings.

Correspondence received relating to a parked car outside Lilac cottage on Bridegate lane; the PC note that the parking is not illegal and is well within the 30MPH zone of the village and could be safely navigated.

Notts CC advise that the existing customer service email address will no longer be in use and contact needs to be directed through the online form.

NCC have inspected the blocked drain at South end of the village and decision will be taken on necessary action

**Finance and Account balances:** see full Minutes on Parish Noticeboards and online.

**Date of next meetings (tbc): Proposed dates of 26<sup>th</sup> March and 30<sup>th</sup> April**

## PARISH COUNCIL WEBSITE

The Hickling & Hickling Pastures village website can be found at:  
<https://hickling-pc.gov.uk>

We hope that the website will gradually grow over time and that it will be easier for residents to catch up with Parish Council business and to contact Parish Councillors. The website also has sections for village news and for village groups—please keep visiting the website to see what is going on in your village!



## YOUR PARISH COUNCIL

The Parish Council is the lowest tier of local government and is made up of representatives living within the local community who have an interest in community matters and who make decisions on behalf of the Parish.

**Your Parish Clerk can be contacted: by email: [clerk@hickling-pc.gov.uk](mailto:clerk@hickling-pc.gov.uk)**

The Parish Council is here to help; however, many issues encountered in the Parish, do not fall under the jurisdiction of the Parish Council and you should contact the relevant authority in the first instance to assist you.

**PLEASE CONTACT NOTTS COUNTY COUNCIL:**  
[www.nottinghamshire.gov.uk](http://www.nottinghamshire.gov.uk) or call 0300 500 8080 - Monday to Friday 8am to 6pm for issues relating to:

Roads & pavements including obstructions and potholes/roadside verges/road gullies or drains/streetlight faults/trees on public land/bus services.

**PLEASE CONTACT RUSHCLIFFE BOROUGH COUNCIL:** [www.rushcliffe.gov.uk](http://www.rushcliffe.gov.uk) or call 0115 9819911 for issues relating to:

Planning  
Waste – including fly-tipping  
Electoral matters.  
Council Tax

If you have an issue and you are unsure of who can help, or a previously reported issue remains unresolved then contact the Parish Clerk; [hicklingparishclerk@gmail.com](mailto:hicklingparishclerk@gmail.com)

### If you wish to comment on a planning application:

**You can comment online** by searching for 'Rushcliffe Planning' - go to 'simple search' type in 'Hickling' and scroll to find the application.

**Or you can write to:**  
Planning & Development  
Rushcliffe Borough Council  
Rushcliffe Arena  
Rugby Road  
West Bridgford  
NOTTINGHAM  
NG2 7YG

Always remember to quote the planning reference.

**Please copy your comments to the Parish Council and Borough Councillor, Tina Combella so that we can take your views into account in our decisions.**

## Diary

- 29th March: Good Friday Walk (see Church pages)
- 7th April: Village Hall Breakfasts
- 7th April: WI Fashion Show
- 9th April: Film Club - Supernova, VH, 7.30pm
- 12th April: Village Hall Quiz
- 18th April: WI: Fashion Show Hickling VH
- 23rd April: Film Club—Quiet Girl
- 27th April: Concert with the Bridge Singers, Church
- 30th April: Local History evening at The Plough 5pm-8pm
- 5th May: Village Hall Breakfasts
- 7th May: Film Club—Anatomy of a Fall
- 11th May: Notts County Show—Newark Showground
- 12th May: Velo Belvoir Cycle Ride
- 15th May: WI Newark & Norwell Gardens
- 18th May: Belvoir Angels Open Day, Church, 10-4pm
- 18th & 19th May: Wysall Art Fair
- 19th May: Belvoir Angels Discussion event, Village Hall, 2-4pm
- 28th June: St. Luke's Church—Night at the Musicals 7.30pm
- 11th August: WI 50s & 60s Festival at Crich Tramway Museum
- 14th & 15th Sept: Scarecrows Festival
- 27th Sept: WI Day Trip to Stamford
- 4th Oct: St. Luke's Church—History Talk by Peter Liddle

**Every Thursday at 10.30am:** Coffee Morning in Church (please check venue during winter months)  
**Beaver Scouts** 6-8 years, Tuesday 6.15-7.15pm; **Cub Scouts** 8-10.5 years, Monday 6.00-7.30pm;  
**Scouts** 10.5-14 years, Monday 7.30-9.00pm; all at Kinoulton Village Hall  
**Explorer Scouts** 14-18 years, Tuesday 7.30-9.00pm; Keyworth Scout Hut  
**Contact** for ALL sections: Susanne Youngson 0788 413 6890 [gskinoulton@gmail.com](mailto:gskinoulton@gmail.com)

~~~~~

Would you like to support the Hickling Standard with sponsorship?

Printing costs are an ongoing pressure for us but we are committed to delivering a free copy of the newsletter to every household in Hickling & Hickling Pastures.

We estimate that the costs are approx. £5 a year per household – great value for money!! Please email a.terry125@btinternet.com if you are interested in making a small (or large!) contribution to our costs; payments can be made by bank transfer & we can include your name in a list of our supporters (or you can remain anonymous, if you prefer).

& thank you to those of you who already support us;

Hickling Parish Council Scarecrows Committee Samworth Foundation
Peter and Philippa Jacks. Adam and Donna Taylor Pauline Chell
Mr & Mrs A Chambers Anonymus
Andy & Mairi Chapman Lisa & Paul Mills & all of our advertisers.

~~~~~

# Village Directory:

|                            |                                                                                                                    |                                 |                                                                                                                                            |
|----------------------------|--------------------------------------------------------------------------------------------------------------------|---------------------------------|--------------------------------------------------------------------------------------------------------------------------------------------|
| <b>150 Club</b>            | Philippa Jacks 822622                                                                                              | <b>Kinoulton School PTF</b>     | Sarah Parris 01949 823925                                                                                                                  |
| <b>Beavers</b>             | Susanne Youngson 07884 136890                                                                                      | <b>Neighbourhood Watch</b>      | Tracey Prosser<br>tjprosser67@gmail.com                                                                                                    |
| <b>Bellringers</b>         | Lynn Irving 07388 348341<br>lynn.irving74@gmail.com                                                                | <b>Nottinghamshire Police</b>   | Control Room; non-emergency number 101<br><b>Parish Council:</b> Clerk—Julie Holland 01949 823902<br>e.mail: hicklingparishclerk@gmail.com |
| <b>British Legion</b>      | Colin Henson 01949 81453                                                                                           | <b>Parochial Church Council</b> | Priest in Charge Revd Paul Massey<br>Email: 1revdpaul@gmail.com Tel: 01159 892223                                                          |
| <b>Councillors</b>         | John Cottee (County)<br>cjl.r.john.cottee@nottscc.gov.uk<br>Tina Combella (Borough)<br>Tcombella@rushcliffe.gov.uk | <b>Churchwarden</b>             | Treasurer Alex Thomas 823420<br>Secretary                                                                                                  |
| <b>Cubs</b>                | Susanne Youngson 07884 136890                                                                                      | <b>Scarecrow Committee</b>      | Karen Buckley (Chair) 07729 768366<br>Sally Jenkins (Secretary) 07971 520711                                                               |
| <b>Film Society</b>        | Tim McEwen 822834                                                                                                  | <b>Scouts</b>                   | Susanne Youngson 07884 136890                                                                                                              |
| <b>Gardening Club</b>      | Mr B. Baxter 01949 81374                                                                                           | <b>Table Tennis:</b>            | Alison 01664 822761 & Dave 01664 820262                                                                                                    |
| <b>Good Neighbours</b>     | Mrs B. Grundy 01949 81442<br>Liz Vear 822562 or 07805 407229                                                       | <b>Vale Beaders</b>             | Elizabeth Evans 01949 81501                                                                                                                |
| <b>Scheme</b>              |                                                                                                                    | <b>Village Hall</b>             | Barbara McEwen (Chair) 822834<br>Tim McEwen (sec.) 822834                                                                                  |
| <b>Guides</b>              | Alison Popplewell 01949 81604                                                                                      | <b>Village Choir</b>            | John Robinson (treas.) 822762<br>Phillipa Jacks (bookings) 823622<br>Lynn Irving 07388 348341<br>lynn.irving74@gmail.com                   |
| <b>Hickling Pre-School</b> | Nick 07950 558608                                                                                                  | <b>Women's Institute</b>        | Lynne Spencer (Secr.) 01159431008<br>Carol Beadle (Treas) 01664 822195<br>Pauline Chell (Trips) 01664 822835                               |
| <b>Hickling Standard</b>   | see previous page                                                                                                  |                                 |                                                                                                                                            |
| <b>History Group</b>       | Carol Beadle 822195<br>Pauline Chell (fundraising) 822835<br>Jane Fraser 822845<br>Gill Bloor 822682               |                                 |                                                                                                                                            |
| <b>Kinoulton School</b>    | Mr Simon Paramore (head)<br>01949 81203<br>office@kinoulton.notts.sch.uk                                           |                                 |                                                                                                                                            |

## Hickling Village Newsletter - Committee

Chair; Tim McEwen - tel. 822834 or tmcewen@globalnet.co.uk

Treasurer/Advertising; Andrew Terry

tel. 822088 or a.terry125@btinternet.com

Jane Fraser - tel. 822845 or frasermjlk@outlook.com

Barbara McEwen - tel. 822834 or barbara.mcewen01@gmail.com

Please get in touch with any of us if you have any comments or suggestions; we would welcome any contributions for future issues - articles, opinions, reports, recipes, poems, brain-teasers - whatever you would like to see in print!

### 2024 Copy Dates;

June/July 15/5/24

Aug/Sept 15/7/24

Copy must be received before these dates to guarantee its appearance. Please note that the committee reserve the right to edit or omit any material submitted. Opinions expressed in published articles remain the responsibility of the author. Articles may be published anonymously but the committee does need to have details of authorship before publication. For details of our privacy policy, please ask any member of the committee.

**COPY IN ANY FORM IS ALWAYS GRATEFULLY RECEIVED**

**e-mail address - frasermjlk@outlook.com**

Advertising Rates (one advert for one year - 6 issues.)

Front inside cover - £65

Back cover - £80

Quarter page - £30

Half page - £45

Full page - £60

(enclose payment with copy for the advert and give to a committee member before the copy date.)

**Charity, Village Events and Personal (wanted/for sale) adverts are FREE.**

**We are very grateful to everyone who supports the village through placing adverts in the newsletter - you make all the difference!**

### **Hickling Standard - online edition**

The Hickling Standard is also available as a pdf at: [www.hicklingnottslocalhistory.com/hickling-standard/](http://www.hicklingnottslocalhistory.com/hickling-standard/) and will shortly be available on the new Parish Council website, too.

~~~~~

The Hickling Standard is printed by Adlards, The Old School, The Green, Ruddington: 0115 921 4863