

Today, why not collect a  
hot tasty meal from your  
local pub?

**FIND OUR MENUS INSIDE**



*Pages  
28-29!!*

Call us with your order on  
(01664) 822225

The

# Hickling Standard

Village Newsletter for  
Hickling and  
Hickling Pastures

Issue 152

Feb/March 2024





## Belvoir Angels Weekend

May 18th & 19th 2024

Saturday May 18th:

**Open Day**

**10am-4pm**

**with events, activities & displays - Hickling Church**

Talks and activities will be repeated through the day  
please call in for as little or as long as you wish

- ~ Churchyard Tours ~ Belvoir Angel rubbings ~ Tower Tours ~
- ~ hourly introductory talks ~ photographing the Angels -
- ~ the stories ~ Vanessa Stone's artwork & designs ~
- ~ Refreshments ~ Entry free ~ Donations, please ~

Sunday May 19th:

## **Seminar: Belvoir Angels—past, present & future**

**Conversations about the Belvoir Angels**

**2pm-4pm (inc. refreshments) Hickling Village Hall**

You are invited to speak (5 minute sections) or just listen or ask questions about the Belvoir Angels in this exploration of these beguiling headstones.

All welcome; but, if you would like to speak, please register with us beforehand (programme will be circulated nearer the time).

~~~~~

**for further information:**

email: [info@hicklingnottsllocalhistory.com](mailto:info@hicklingnottsllocalhistory.com)

FB: [www.facebook.com/HicklingNottsLocalHistory/](https://www.facebook.com/HicklingNottsLocalHistory/)

website: [www.hicklingnottsllocalhistory.com](http://www.hicklingnottsllocalhistory.com)



## The Plough Inn, Hickling

(Editorial)

The Plough in Hickling is our last remaining pub (there seem to have been seven or more at various times in the past) and, alongside our farmers, it is our oldest village business. The Plough was probably built towards the end of the 1700s and pre-dates the Grantham Canal—although it isn't Listed, it is valued as a Community Asset and as an important feature in our village Conservation Area as well as in our daily lives.

Just over 10 years ago, the Parish Council and a group of village residents fought hard to persuade the Scottish & Newcastle brewery to sell the pub and allow it to operate as an independent—this saved the pub from imminent closure. Now, we find ourselves with an owner who is determined to keep it open as well as being incredibly lucky to have Chris and Kirsty as landlord and landlady. It isn't easy running a pub these days but they and their staff offer welcoming hospitality and kindness, and their support of village activities is generous and unstinting.

Village pubs, like the Plough, are at the centre of rural communities but they are under great pressure and are disappearing all over the country - many of these pressures are completely out of the control of landlords and owners (which is horribly dispiriting for them) - it is worth talking to them about some of the really tough decisions they face. Nevertheless, with creativity and local support they can (& do!) keep going.

If you have any ideas of ways that we could all help and support our village pub, be sure to have a chat with Chris and Kirsty next time you drop in.

So, in the depths of winter when flooding has hit once again and we are all hibernating indoors hoping for a glimpse of the Spring; the doors of the Plough Inn are open and ready to welcome you in to the warmth. Then, before you know it, we will all be sitting outside in the gardens, in the sunshine, enjoying a bevvy or two with friends and neighbours!





# DOVE COTTAGE DAY HOSPICE

## UPDATE



### SPACES AVAILABLE AT WELLBEING GROUP

Dove Cottage Day Hospice has expanded their current offering to enable more local families to benefit from their day care services.

The hospice has new places available on their wellbeing group which aims to offer guests and their carers a chance to enjoy social activities, a light lunch and a variety of entertainment during the three-hour sessions.

The group takes place every Monday at the Stathern hospice and is open to families in the Vale who have been diagnosed with life-limiting health conditions including memory loss.

Please note that this is NOT a drop-in service and those wishing to attend must book in advance. Please contact Emily on 01949 860303 for more information.

### JOB OPPORTUNITIES

Dove Cottage are currently on the lookout for individuals to fill the current vacancies:

- Charity Shop Manager
- Tearoom Cook
- Relief Health Care Assistant
- Relief Cook (Hospice/Tea Room)

### VOLUNTEER ROLES AVAILABLE:

- Drivers
- Transport Coordinator
- Charity Shop Assistant
- Tea Room Assistant

Further information regarding these roles can be found online at  
[www.dovecottage.org/vacancies](http://www.dovecottage.org/vacancies)

[www.dovecottage.org](http://www.dovecottage.org)

01949 860303



@dovecottedayhospice



### Vale hospice founder's royal award

We are so proud of our founder  
Chris Gatfield for being  
recognised for all her hard work  
setting up our wonderful hospice!

Read all about it at

[www.dovecottage.org/news-events](http://www.dovecottage.org/news-events)

### Local hospice expands services & creates job opportunities.

#### Spaces available at wellbeing support group

Dove Cottage Day Hospice has expanded their current offering to enable more local families to benefit from their day care services.

The hospice has new places available on their wellbeing group which aims to offer guests and their carers a chance to enjoy social activities, a light lunch and a variety of entertainment during the three-hour sessions.

The group takes place every Monday at the Stathern hospice and is open to families in the Vale who have been diagnosed with life-limiting health conditions including memory loss.

Please note that this is NOT a drop-in service and those wishing to attend must book in advance. Please contact Emily on 01949 860303 for more information.

#### Opportunities to support your local hospice

Dove Cottage Day Hospice opened its doors in 1996 offering respite care for over 70 families each week through its services which in addition to day-care, includes a range of support groups for carers such as dementia care, bereavement support and general advice and guidance for carers and family members.

All services are offered to families completely free of charge, but each year costs the charity around £750,000 to run, of which less than 4% is contributed by the government.

Registered Manager Dan Smeeton took over the reins of the hospice last year from recently retired founder Chris Gatfield and has exciting plans for the hospice for 2024 and beyond.

Dan Says "We have lots of plans to further develop our services and facilities and are very excited to see what we can achieve in 2024.

We rely heavily on an army of around 130 volunteers who selflessly provide their time for free, yet our costs continue to rise due to hikes in utility bills, premises rates, fuel increases etc.

The local community have always been so supportive of Dove Cottage and we are hoping to encourage increased assistance from individuals and local businesses who might be able to help us with developing our services"

The charity are currently on the lookout for individuals to fill the current vacancies: Charity Shop Manager, Tearoom Cook, Relief Health Care Assistant and Relief Cook, in additions to some volunteer roles: Drivers, Transport Coordinator, Charity Shop and Tea Room Assistants. Further information regarding these roles can be found online at [www.dovecottage.org/vacancies](http://www.dovecottage.org/vacancies).

They are also appealing to local businesses that may be willing to support the hospice as a corporate partner. Please email [fundraising@dovecottage.org](mailto:fundraising@dovecottage.org) if you think you might be able to help.





## The Royal British Legion Vale of Belvoir Branch

### Centuries Old Naval Sayings

"Clear for action" - Prepare for battle.  
 "Full steam ahead" - Move forward at maximum speed.  
 "Man overboard" - A cry to alert the crew that someone has fallen into the water.  
 "Make fast" - Secure a line or rope.  
 "Permission to come aboard?" - A request for permission to board a ship.  
 "Splice the mainbrace" - A traditional order to issue an extra ration of rum.  
 "Steady as she goes" - Maintain a steady course.  
 "Swab the deck" - Clean the ship's deck.  
 "Three sheets to the wind" - A drunken sailor. Refers to ropes flapping about.  
 "Underway" - The ship is in motion.  
 "Walk the plank" - A punishment where a person is forced to walk off the edge of a ship.  
 "X marks the spot" - A reference to a hidden treasure location.  
 "Davy Jones' locker" - The destiny of someone has drowned or died at sea.  
 "Beam Ends!" - Out of luck. A capsized galleon on its beam ends is out of the battle.  
 "Land ho!" - A cry to alert the crew that land is in sight.  
 "Avast, ye scurvy dogs!" - Stop and listen, you dirty rascals!  
 "Sink or swim" - A phrase meaning either to succeed or fail completely.  
 "All at sea" - Feeling confused or disoriented.  
 "Cut and run" - To quickly leave a dangerous or difficult situation.  
 "Dressed to the nines" - Dressed in one's best clothes.  
 "Fathom out" - To understand or figure out something.  
 "Give no quarter" - Show no mercy or leniency.  
 "Jolly Roger" - The traditional pirate flag with skull and crossbones.  
 "Shiver me timbers" - An expression of surprise or disbelief.  
 "All hands on deck" - A call for all crew members to report to their stations.  
 "Batten down the hatches" - Secure everything on the ship for rough weather.  
 "Even Keel" - To maintain calm and steady progress.  
 "Hand over fist" - To act quickly, as in hoisting a sail

### Poppy Appeal

November's Poppy Appeal figure, including statics and church collection was £2,276.38 (£1,819.76 in 2022). We should like to thank all donors for your generosity.

Michael Chapman



## Messages

Please contact us with your messages - we look forward to hearing from you.



No **welcome messages** for this issue: but if you have recently moved in to Hickling or Hickling Pastures and we haven't said, 'Hello!', we hope that you are enjoying living in the village and your new neighbours look forward to meeting you.

~~~~~

We are very sad to share the news that Jill Saynor (nee Hortor) has died recently. She was an extraordinary woman and a strong character who will be fondly remembered; not least for her years running the Hortors nursery and shop and for her fundraising efforts following the death of her husband John Saynor. Our thoughts and best wishes go to Jill's family and friends.

~~~~~

**This message has been removed, with the editor's full apologies**

~~~~~

During the heavy rains in early January we were reminded, once again, what a wonderful thing it is to live in a village like Hickling. Our village pub, The Plough, suffered from flooding again but with the support of their regulars, friends and neighbours, they managed to limit the damage and re-open sooner than feared: Chris and Kirsty posted this message on their social media:

**"To all the heroes that responded to our S.O.S. - thank you from the bottom of our hearts - without you the Plough at best would have been closed for a long time, you truly saved the pub. It was an emotional day for myself and Kirsty to receive so many offers and help was overwhelming. Because of you we will be back open on Thursday from 5pm for our weekly quiz with our kitchen reopening on Friday for pizzas from 4 - you rock! Chris and Kirsty."**

### SERIOUSLY!!!!

**We really are looking for a New Editor—we need your HELP!!**

After stepping in temporarily following Maggy's retirement from editing the Hickling Standard, we are looking for a volunteer to continue the good work;

please contact Jane at [frasermjlk@outlook.com](mailto:frasermjlk@outlook.com)

- The newsletter is collated on Microsoft Publisher at the moment, but that can change
  - Help & support will be given by the team
- Involves a couple of days spread over every two months (6 issues per year)



# Squirrel Stores

*The biggest "little" shop in the Vale of Belvoir*



Delivery service now available  
on orders over £20  
(excluding cigarettes and tobacco)  
Contact us on 822315 or call in  
to the shop for more details.

- Greetings cards
- Artisan jams, chutneys, honey etc
- Newspapers and magazines
- Wines, beers, local ales and ciders
- Freshly baked Hambleton bread and produce delivered daily
- Selection of butcher's meat produce and Melton Mowbray pork pies
- Local cheeses
- Large variety of fresh fruit and vegetables (personal weekly fruit delivery and veg boxes available)
- Dry cleaning service
- Refill station
- Fresh sandwiches, sausage rolls, samosas etc

*Opening hours:*

*Monday to Saturday 7am to 7pm*

*Sunday and Bank Holidays 8am to 1pm*

*01664 822315*

*The Sands, Long Clawson*

## HICKLING VILLAGE BREAKFAST 2024 DATES

**Sundays, Village Hall 9 – 11am**  
**Feb 4th March 3<sup>rd</sup> April 7<sup>th</sup> May 5<sup>th</sup>**

Full English Breakfast £5.50  
Vegetarian Full English £6.00  
Children's Full English £4.00

***Bring your family, meet your friends.***  
**ALL WELCOME**

If possible please book your places in advance to help us with the catering.  
**Walk-ins still welcome!**

Bookings / queries Pauline 01664 822835  
Barbara 01664 822834



### Village Hall 150 Club Results

26/11/23

£80 - number 55 - Paul Sharpe  
£60 - number 87 - Mrs J Andrews  
£40 - number 102 - Mr and Mrs Blades  
£20 - number 12 - Anita Banner

16/01/24

£80 - number 14 - Molly Collishaw  
£60 - number 170 - Rob and Emily Holt  
£40 - number 16 - Marian Cumpstey  
£20 - number 172 - Ian Richardson

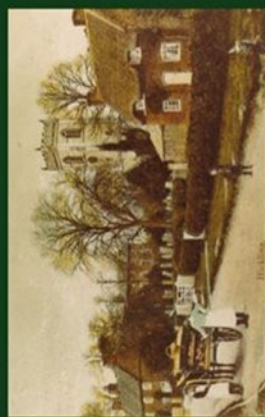






Local History Group  
**Hickling**  
Nottinghamshire

[www.hicklingnottlocalhistory.com](http://www.hicklingnottlocalhistory.com)



## Are You Interested in Local History?

~~~

Research  
Transcribing  
Recording memories  
Events

~~~

Old photographs  
House Deeds  
Family records  
Businesses/Clubs/Societies

~~~

We are looking for all kinds  
of involvement.

Please contact us:

if you would like to be involved  
in the local history group **or**  
if you have any projects that  
you would like to work on **or**  
if you have material that we  
could add to our collections.

~~~

[info@hicklingnottlocalhistory.com](mailto:info@hicklingnottlocalhistory.com)

Facebook

Speak to: Carol Beadle, Gill Bloor,  
Pauline Chell, Jane Fraser.

# Hickling Village Hall

presents

## Scratchy Beard in Concert

Saturday, March 16<sup>th</sup> at 7.30



### Folk with swing

Intoxicating swing, heartfelt rhythms and flowing melodies. The storytelling spirit of Anglo-Celtic folk and the sophisticated charm of a Parisian street café, on a summer's afternoon.

Tickets £12.50. Please contact Tim and Barbara  
McEwen (01664 822834 and  
[tmcewen@globalnet.co.uk](mailto:tmcewen@globalnet.co.uk)).

Bring your own drinks – snacks provided.





 The Basin, Main St, Hickling  
Melton Mowbray, LE14 3AH

 01664 820448

 relax@theoldwharf.co.uk

 www.theoldwharf.co.uk

*Time to relax and unwind*

TEAROOM OPEN SEVEN DAYS A WEEK FROM 9.00 AM - 4.00PM

Please note the kitchen closes at 3.15pm and last drinks orders are at 3.45pm



 Find us on Facebook

## Luna Counselling & Psychotherapy


- **Pluralistic Counselling and Psychotherapy** including CBT, Person-Centred, Psychodynamic, Play Therapy and Gestalt.
- **Face to face, online and via telephone.**
- Based in **Cotgrave**, Nottingham.
- Ages **children to older adults.**
- Accredited Member of the **National Counselling Society** and on their **Children & Young People register.**
- **Fully insured, level 5 trained** and holds **enhanced DBS** certificate.
- Low mood and **depression, anxiety**, intrusive thoughts, **OCD, bereavement** and grief, **anger** and frustration, **phobias, relationship issues**, **lifework, motivation, self-defeating behaviours.**

Ellie Meakin

Ellie@LunaCounselling.co.uk

07444 529 521

*\*Please contact for prices\**



## HICKLING LORRY WATCH NEEDS YOU!

Hickling is part of the Notts Lorry Watch Scheme. We became a member of the scheme when the HGV Restrictions were placed along the stretch of Main Street between Bridegate and Clawson Lane. Lorry Watch allows individuals to report the misuse of weight restricted routes by lorries. An HGV is any vehicle over 3.5 tons. The Main Street restriction is for lorries of 7.5 tons and above. Transgressions are reported via the on line form (**just google Notts Lorry Watch**), to Notts Trading Standards who then will enforce it, and apply penalties where needed. It's worth noting that large articulated lorries can weigh up to 44 tons! Most of the big articulated lorries will be 18 tons.

The Hickling Restrictions were introduced because of the growing amount of HGVs using Hickling as a short cut to Long Clawson and beyond. It was felt that the lanes were too narrow, that the sheer weight of these vehicles were damaging the roads, and the corners at Bridegate and Clawson Lane were too tight. In addition Bridegate Lane corner is the picking up and dropping off point for the school buses, and also has Walkers Green children's play area.

There are exemptions which allow certain HGVs to go through the Restrictions. These exemptions apply to the Clawson Dairy milk tankers, and any vehicles needing access to premises within Hickling itself. The HGV Restriction does not apply to farm vehicles. Since the introduction of the Restrictions there has been a marked reduction in HGVs travelling through the village. Recently Melton Road Long Clawson was closed for 80 days for water main work. HGVs needing to go to and from Long Clawson were granted an exemption. The results were quite dramatic. All Long Clawson Dairy traffic was rerouted through Hickling. Sometimes up to twenty HGVs a day were trundling through the village. This fortunately has now ceased since the Melton Road Long Clawson has reopened and the Dairy traffic has reverted to the designated legal route.

**This road closure really brought home just how much HGV traffic could be travelling through Hickling day and night if we did not have the Restrictions.**

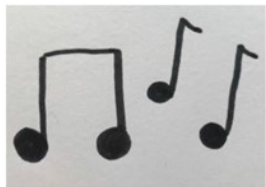
Therefore I would appeal to all residents who wish to keep this traffic out of the village to use the Lorry Watch Scheme if you suspect a lorry is misusing the weight restrictions. Simply take the registration number of the vehicle and any information written on it. Company name etc. If you Google Notts Lorry Watch you will be taken to the page with a link to the online reporting form. It's very straightforward and allows your report to go directly to Notts Trading Standards. They will do the rest. You don't need to worry about making mistakes either, because Trading standards will only follow-up reports that involve lorries that are mis-using the routes.

Next time you see one of these leviathans trying to get around Bridegate Lane corner or mounting the pavement on Main Street to get past parked vehicles, you could report it and help keep Hickling a safer and more tranquil place.

Tony Hand

*(editor; this seems a really good way of helping to manage traffic in the village without the need for additional signage or urban-style solutions)*





Music



Sign



Storytime

A fun music and story group for babies and preschoolers supported by Makaton signing.

Mondays 10-11am during term time

St Luke's church, Kinoulton.

£3 per family group per session.

for more information send Cate a message at [musicsignstorytime@gmail.com](mailto:musicsignstorytime@gmail.com) or 07886169691

## Table Tennis at the Village Hall!

Monday nights 8 – 10pm

It's been a great season for Village Table Tennis. There have been lots of new friendly faces and so much enthusiasm that we extended our season beyond the Easter break for the first time. Our ethos of 'simply social' is at the heart of our sessions which offer a friendly knock about or a more intensive game and, of course, the chance to socialise.

We'll be taking a break for the summer and will return to the Village Hall on Monday 11 September at 8pm.

For more information call Alison 822761, or Dave 820262.

- Whether your preference is to have a friendly knock-about, or to seek the challenge of an intensive game, our flexible sessions are perfect for you
- Our season runs through the winter from late September to Easter, with a festive break
- Cosy village hall venue with superb facilities and tables for full match play standard
- Comprehensive set up to and quality equipment provided according to ability
- Enjoyable all round exercise in an exceptionally friendly environment, whatever your experience and ability
- Tea and biscuits included, providing an opportunity to relax and socialise

SIMPLY CALL 01664 822761 or 01664 820262  
FOR AN INFORMATIVE CHAT

Try our outdoor table at the Wharf in Hickling.  
Bats and balls available from The Old Wharf Tearooms



## Headmaster's log book: 1876-1897

*(one of our volunteers is currently transcribing the logbook which is full of the most fascinating snapshots of village life—in the meantime, a short extract)*

Feb 12th 1877: It will be necessary to pay more attention to the multiplication tables I notice that many in the first class do not know it very readily. The attendance today is not as good as last week. Several are away with bad colds. It rained heavily at about 8.30 and that would probably prevent some few from starting.

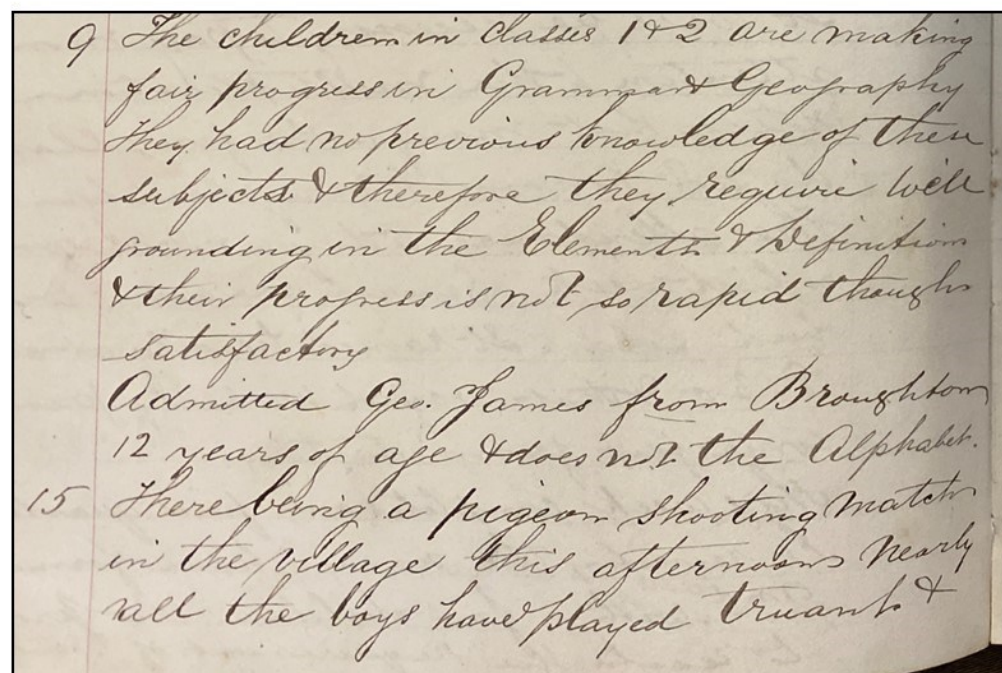
Feb 23rd: I have examined the 3rd class and find their progress to be most satisfactory; in short it is surprising for many of them could not read monosyllables when we began work last November and they can now read fairly. Being big and old as compared with their abilities, they are ashamed of their ignorance and work with a will.

March 9th: The children in classes 1 & 2 are making fair progress in Grammar and Geography they had no previous knowledge of these subjects and therefore they require well grounding in the elements and definitions and their progress is not so rapid though satisfactory.

Admitted Geo. James from Broughton 12 years of age and does not the alphabet.

March 15th There being a pigeon shooting match in the village this afternoon nearly all the boys have played truant & gone to the shooting. Shall punish them by depriving them of their time for a few days.

Yesterday, Robert Rippon broke a pane of glass in one of the school windows.





**Freeview**  
**EST 1982**

# HEWITT'S AERIALS

**HUSBAND & WIFE TEAM**  
**DIGITAL TV AERIALS FITTED**  
**& REPAIRED • FREESAT**  
**EX-POINTS • TUNING**  
**SETUPS • DIAGNOSTICS**  
**FREE QUOTES • ALL AREAS**  
**OAPs DISCOUNTS**

CONTACT MANDY OR DAVID

**07554 387206**  
**01664 820430**  
Corner Cottage, Clawson Lane, Hickling LE14 3AB

**Hickling Village Hall**  
**Strictly Why Not Dance?**  
At Hickling Village Hall  
Main Street, Hickling, LE14 3AQ  
**Thursdays - 4pm to 6 ish.**

Ballroom, Latin. An hour with instructor and time to practice afterwards.  
£15 per couple - come and try some new moves.

Exercise the mind and the body and reward yourself with a cup of tea and some homemade cake.  
Couples only at the moment.  
No Booking required.



## Local History Group



### Email contact list:

general news and updates about projects that we are working on.  
To join the mailing list, please send your name and details to us at:  
[info@hicklingnottlocalhistory.com](mailto:info@hicklingnottlocalhistory.com)

### Gatherings at the Plough Inn.

Drop in, bring things, talk about all-things-Hickling!  
Tuesday 30th April 2024 5pm-8pm



**Local History Talk**  
By Emily Gillott  
(Notts County Council Archaeologist)

~~~~~  
**Hickling Village Hall**  
**March 8th 7.30pm**  
~~~~~

### Rufford Abbey Through the Ages

Archaeology—Landscape—Characters

Rufford Abbey will be used to trace how one location has changed and evolved through time, offering an insight into changes we can spot in our own surroundings.

Emily will talk us through the history and archaeology of Rufford, from earliest clues to monastic institution, to quirky country house.

She'll talk about some of the recent research including excavation and archival work, and take a look at John Lumley Savile; Victorian diplomat and patron of archaeology, and one of the last great owners of the house.

This is the 2nd talk Emily has given us—do you remember 'Fields in the Landscape' last year? She's a great speaker and we're sure that you will enjoy this talk, just as much!!

~~~~~



Tickets £5  
including tea  
and biscuits  
Purchase on the  
door or in  
advance  
from Pauline  
Chell (01664  
822835)

or contact us at: [info@hicklingnottlocalhistory.com](mailto:info@hicklingnottlocalhistory.com)

**Hickling Local  
History Group**

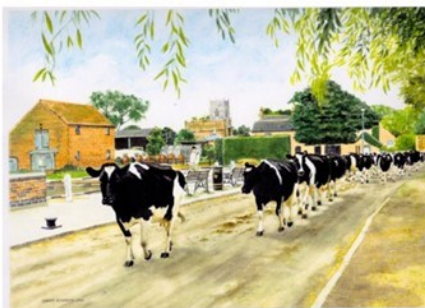


**Information  
Boards Project**

### Views of Hickling—notecards

FOR SALE

~ 2 Designs ~ £4 per pack ~ Packs of 8 ~  
Available from Pauline Chell 01664 822835





After several months of doing their Bargain Hunt Challenge,

### **HICKLING W.I. RAISED OVER £1000 FOR THE CHARITY BLOOD BIKES AT SHOULERS & SON AUCTION ON 14 DECEMBER 2023**

Thank you to everyone who gave their support. Please visit the Collectables Stall at the Spring Fayre on 16 March in Kinoulton Village Hall where items are being sold to raise further funds for Blood Bikes. If you wish to donate anything for this stall please contact Hickling WI c/o 01664 822835 or text 07983486695



### **FROM HICKLING WI ARCHIVES**

There has been a WI in Hickling for over 100yrs with a break during WWII when local women were needed to work on farms and to do other duties to help with the war effort. The WI reopened in the late 1940's and has been a popular and successful organisation in the village ever since. The Hickling WI has always supported the local community and their archives show just how much.

- In 1976, the Village Hall was broken into and lots of damage done. Hickling WI gave money for a new urn and other equipment needed. Members also helped to clean up the mess which the intruders had made.
- In 1997 several members were involved in the local 'meals on wheels' scheme which ensured many people received a hot meal.
- £100 was spent by Hickling WI in 1998 on daffodil bulbs. Members planted these



### **Hickling W.I.**

Have you ever thought of joining Hickling W.I.? As a friendly and active group we meet at Hickling Village Hall every 3rd Thursday in the month & we're always looking for new members.

We arrange trips/visits in between our monthly meetings so why not pop along to a meeting or Pauline Chell 01664 822835 for further information.

By the way we don't sing Jerusalem or make jam.

**Hopefully see you soon**

**From the Hickling W.I. committee**



### **DATES FOR THE DIARY:**

**16th March 10.30am-3.30pm—SPRING FAYRE in Kinoulton Village Hall**

**18th April 7.30pm—FASHION SHOW in Hickling Village Hall**

**11th August—50s and 60s Festival at Crich Tramway Museum**

**27th September—A Day in Stamford**

around the village and by the canal.

- In 2004, Hickling WI purchased curtains for the Village Hall from their funds.
- In 2006, Hickling WI made a very generous donation to St Luke's Church Oil Fund .
- When Hickling's Union Jack Flag became too worn to be used, Hickling WI came to the rescue. In 2015 they bought the village a replacement flag. This flag is raised on special occasions and can be seen flying outside the village hall.
- When the village hall was extended the Hickling WI produced a Time Capsule which was installed in the new roof. This contained items related to the time including a coin purse containing one of each of the coins of the time. To link the strong connection between Hickling and the Dairy & Cheese industry, the time capsule container was a small milk churn.
- In 2023 the Hickling WI bought the village a commemorative bench to mark the Coronation of King Charles 111. This has now been placed in Hickling Churchyard.

### **What is planned for 2024?**

Hickling WI hopes to link with other village organisations to give the Village the biggest and best Christmas Party ever!!!

**HICKLING W.I. HAS ORGANISED A TRIP TO**

**THE CRICH TRAMWAY MUSEUM**

**50'S & 60'S FESTIVAL**

**SATURDAY 11<sup>TH</sup> AUGUST 2024**

**This is a full day of festival activities including live music and entertainment. Please book early to ensure a place.**

**DRESS UP FOR THE OCCASION**

**The coach will pick up at 8.25 at the Nevile Arms in Kinoulton**

**At 8.30 at the end of Bridegate Lane, Hickling**

**At 9am on Wollaton Road -end of Grangewood Rd, Wollaton**

**We will be leaving for home about 5pm**

**Please book by contacting Pauline Chell on 01664 822835**



**LADY FRIDAY** Are you short of TIME?

I could support you when you're working or on holiday

**PETS**  
Regular or occasional dog walking & pet care at your home

**CHILDREN & ELDERLY RELATIVES**  
Meet children from school or take them to their recreational activities\*  
Accompany elderly relatives to appointments or shopping, or whatever

**HOME**  
Water plants, take mail in & generally check all is well

Do not hesitate to ask - I am mature and versatile!  
References available on request, inc DBS\*

Angela Sallis, 6 Melton Road, Long Clawson, LE14 4NR  
01664 822597 [angela\\_sallis@btinternet.com](mailto:angela_sallis@btinternet.com)

 **Belvoir Foot Health Clinic**

 DipCFHP  MPSPract  professional standards authority accredited register MPS5909

 **07714876006**

 [belvoirfoothealthclinic.co.uk](http://belvoirfoothealthclinic.co.uk)

 **Suite G, Cotgrave Business Hub, Candleby Lane, Cotgrave, Nottinghamshire, NG12 3US.**

**HICKLING WI HAS ORGANISED A TRIP**  
**A DAY IN STAMFORD**  
**FRIDAY 27<sup>TH</sup> SEPTEMBER 2024**

A coach will take us to Historic Stamford on Market Day, where we will have time to explore all that Stamford has to offer – churches, museums, individual shops, The George Hotel etc.

On the way home we will stop at Gates Nursery

The coach will pick up at 8.25 at the Nevile Arms, Kinoulton  
At 8.30 at the end of Bridegate Lane, Hickling  
At 8.40 at the Tap and Run in Upper Broughton

Please book by contacting **Pauline Chell** on 01664 822835  
**£20 per person**

Working with Long Clawson Dairy, Hickling WI have produced 12 new Stilton recipes, to see you through the year: here is recipe 4!

Caramelised Pear and Rocket salad.

Serves 4

Ingredients

60g Butter  
4 tbs of white wine vinegar.  
1 heaped tbs of golden granulated sugar.  
2 firm pears quartered and cored.  
70g walnuts  
100g rocket leaves.  
150g white or blue Stilton

Method

1. Place the butter, vinegar and sugar in a frying pan over a medium heat.
2. Add the pear and walnuts and cook for 4 minutes or until the pear is just soft.
3. Place the rocket on serving plates and top with the pear and walnuts.
4. Spoon over the pan juices and top with the Stilton.





## Letter from St Luke's

In our churches, on the four Sundays before Christmas - the time known as Advent - a prayer of dedication is said as candles are lit. The dedications are hope, peace, joy and love. To some of us, they may seem somewhat forlorn in the reality of today's world.

However, with that pushed to the back of my mind, it was with some optimism that I read, on January 1st, an article in my newspaper written by former Prime Minister Gordon Brown and entitled 'Mandela taught me the value of hope'. In it, he drew on his experience in government, highlighting conversations with Nelson Mandela, the first black president of South Africa. Most touching for me was the reference to the facsimile of a painting Mandela had in his cell on Robben Island of a blindfolded girl trying to play a harp on which almost every string was broken. It was entitled 'Hope'. At first sight, 'Despair' might have been a better description but, as Mandela explained, there was no contradiction. In the 27 years he was incarcerated, even when facing what seemed like hopeless situations, he never lost hope that one day he and his country would be free. He always believed that people would come together to shape a better future.

Looking back over his own time in government, Brown went on to recall some of the unlikely partnerships which did create hope. For some of you, these may be ancient history! They included J F Kennedy's peace speech in 1963, which moved both the US and Russia on from the Cuban missile crisis, and the amazingly positive chemistry between Ronald Reagan and Mikhail Gorbachev when Reagan, then US president, asked the Soviet leader if he would help the US in the event of an asteroid attack from space.

By now, you may be wondering what all this has to do with us in 2024, in our small corner. Well, I too have looked back over the last couple of years in our villages and have seen how our communities, both in churches and other groups, have come together in so many ways to share activities, support those less fortunate and care for those in need. You, like me, may have spoken to fellow village residents you have never met before and you may even be planning the next move. Does that not bring a good feeling, even hope maybe, to us as a group and as individuals? For those whose faith is in Jesus, it is part of Christ's teaching, epitomised in these words from John's Gospel: "A new command I give you: Love one another. As I have loved you, so you must love one another." But let the last words be those of Gordon Brown as his article ended, 'As Mandela told us, the impossible is only impossible until we make it possible.'

**Sheila Hill**



Live Music at St. Luke's Hickling  
With Loxley Saxophone Ensemble

Saturday 3rd February  
7.00 - 8.30 pm  
Light Refreshments

Tickets £7, under 12s free

from Alex Thomas 07788 518156  
and Sarah Bailey 07973 854003

All proceeds will go to maintaining the church building, particularly the heating system and the electrics, which need to be updated. That is likely to cost about £5000.

## St. Luke's Church - Dates for the Diary

|              |                                           |
|--------------|-------------------------------------------|
| 3rd February | Loxley Saxophone Ensemble Concert 7.00 pm |
| 29th March   | Good Friday Walk                          |
| 27th April   | Concert with the Bridge Singers           |
| 18th May     | Belvoir Angel Day; Hickling History Group |

|        | Candlemas               | 9:00 am  | Holy Communion                 | 6:30 pm  | Candlemas Service               | 10:00 am   | Morning Prayer                 |
|--------|-------------------------|----------|--------------------------------|----------|---------------------------------|------------|--------------------------------|
| 28 Jan | 2nd Sunday before Lent  | 11:00 am | Morning Prayer                 | 9:00 am  | Holy Communion                  | 10:00 am   | Morning Prayer                 |
| 4 Feb  | Sunday next before Lent | 11:00 am | Morning Prayer                 | 9:00 am  | Holy Communion                  | 10:00 am   | Morning Prayer                 |
| 11 Feb | Ash Wednesday           | 9:00 am  | Holy Communion                 | 6:30 pm  | Evening Prayer                  | 10:00 am   | Morning Prayer                 |
| 18 Feb | 1st Sunday of Lent      | 11:00 am | Morning Prayer                 | 9:00 am  | Holy Communion                  | 10:00 am   | Morning Prayer                 |
| 25 Feb | 2nd Sunday of Lent      | 11:00 am | Morning Prayer                 | 9:00 am  | Holy Communion                  | 10:00 am   | Morning Prayer                 |
| 3 Mar  | 3rd Sunday of Lent      | 11:00 am | Morning Prayer                 | 9:00 am  | Holy Communion                  | 10:00 am   | Morning Prayer                 |
| 10 Mar | Mothering Sunday        | 11:00 am | Morning Prayer                 | 9:00 am  | Holy Communion                  | 10:00 am   | Morning Prayer                 |
| 17 Mar | 5th Sunday of Lent      | 11:00 am | Morning Prayer                 | 9:00 am  | Holy Communion                  | 10:00 am   | Morning Prayer                 |
| 24 Mar | Palm Sunday             | 10:00am  | Holy Communion for Palm Sunday | 10:00 am | Morning Prayer                  | 9:00 am    | Holy Communion                 |
| 25 Mar | Monday of Holy Week     | 7:00 pm  | Reflection                     |          |                                 | 7:00 pm    | Compline                       |
| 26 Mar | Tuesday of Holy Week    |          |                                |          |                                 |            |                                |
| 27 Mar | Wednesday of Holy Week  |          |                                |          |                                 |            |                                |
| 28 Mar | Thursday of Holy Week   |          |                                |          |                                 |            |                                |
| 29 Mar | Good Friday             | 2:30 pm  | Short service                  | 1:30 pm  | Short service Walk to Kinoulton | 12:00 noon | Short service Walk to Hickling |
| 31 Mar | Easter Day              |          |                                |          |                                 |            |                                |
| 7 Apr  | 2nd Sunday of Easter    | 9:00 am  | Holy Communion                 | 6:30 pm  | Evening Prayer                  | 10:00 am   | Morning Prayer                 |

## Ministry Team:

Priest in charge: Revd Paul Massey (Rector of Cotgrave):

Email: [rector@allsaintscotgrave.co.uk](mailto:rector@allsaintscotgrave.co.uk) Tel. 01159 892223

Lay Ministers:

Sheila Hill. Tel. 01949 81096 e-mail [sahill18@btinternet.com](mailto:sahill18@btinternet.com)

Robert C Jones Tel 01664 822916 e-mail [robert.c.jones02@gmail.com](mailto:robert.c.jones02@gmail.com)



# STEVEN M. DAW

## PLUMBING, HEATING and GAS SERVICES

Plumbing work – repairs; Central heating and boiler installations; Boiler servicing; Central heating power flushing; Bathroom design and installation

Over 30 years experience

Based in the Vale of Belvoir

Tel: 01664 822648 - Mobile: 07860 285031

Email: [stevendaw@btinternet.com](mailto:stevendaw@btinternet.com)

[www.stevendaw.com](http://www.stevendaw.com)



**Freeview**  
EST 1982

## HEWITT'S AERIALS

**HUSBAND & WIFE TEAM**

**DIGITAL TV AERIALS FITTED**

**& REPAIRED • FREESAT**

**EX-POINTS • TUNING**

**SETUPS • DIAGNOSTICS**

**FREE QUOTES • ALL AREAS**

**OAPs DISCOUNTS**

CONTACT MANDY OR DAVID

**07554 387206**  
**01664 820430**

Corner Cottage, Clawson Lane, Hickling LE14 3AB

## A.R. PEET LTD

EST. 1979



*Specialist retailer of*  
**WOOD, GAS, ELECTRIC & MULTIFUEL STOVES**

**01664 822397**

[www.arpeetstoves.co.uk](http://www.arpeetstoves.co.uk)

[info@arpeetstoves.co.uk](mailto:info@arpeetstoves.co.uk)

## St. Luke's Church Update

Firstly, a big thank you to everyone who used the church building or shared in the events.

We had a lovely evening of carol singing supported by the Village Choir. On the afternoon of Christmas Eve we were treated to a short Nativity, the result of 2 lively rehearsals. The church was full of life and thank especially Jane Fraser, together with many parents and friends who made it happen.

Midnight Mass was made possible by Trevor Kirkman, who led the service, and Anita Kirkman, our organist. We again enjoyed much lively carol singing.

### Upcoming Events at the Church:

#### Loxley Saxophone Ensemble Concert

Sat 3rd February 7.00 pm £7 including refreshments

**Bridge Singers** Saturday 27th April 7.00 pm

Details to follow

**Belvoir Angels Day** Saturday 18th May. 10 - 4

All proceeds to Church maintenance as we struggle to fund its running costs. The HEATING is now working well after repairs costing £1755, but it costs £5 per hour to run.



### Weekly Coffee Mornings on Thursdays from 10.30am.

Come and meet your friends, enjoy homemade cakes etc. and a warm welcome. No set charge, just a voluntary donation if you can.

### This is your Village Church.

If you would like to support it in any way please contact:

Alex Thomas at [alex28thomas@btinternet.com](mailto:alex28thomas@btinternet.com)

**Could you offer a cake occasionally? Help with cleaning twice a year by rota?**

**Help at events etc?**



# Hickling Film Club

Films in Hickling Village Hall. Free drinks and posh nibbles. No fixed charge – just pay a reasonable sum.

## Nomadland -

Zhao's triple Oscar winner, inspired by the 'new nomads' of recession-hit America, eschews conflict in favour of quiet humanity. Many awards. Tuesday, February 13th at 7.30.



**The Personal History of David Copperfield** - David Copperfield, an orphan, faces numerous obstacles and finds solace in the art of storytelling and writing. Despite his life being tragic, he manages to have some fun while entertaining others. Excellent reviews. Tuesday, February 27th at 7.30.



We are located in Hickling Village Hall  
Monday – Friday  
9.15am-3.15pm  
during term time.  
You can visit our website

[hicklingpreschool.co.uk](http://hicklingpreschool.co.uk) for more information on how to get involved or how to register your child.



## The Great Escaper

- Michael Caine and Glenda Jackson exude ineffable class. The two British icons bring a huge amount of joy to the heart-warming true story of Bernard Jordan, the 89-year-old veteran who snuck off to attend the 70th anniversary of D-day. Excellent reviews.

Tuesday, March 12th at 7.30.

**Supernova** - A gay couple -- one a musician, the other a novelist -- embark on a road trip as dementia starts to take hold of one of them. Colin Firth and Stanley Tucci dazzle as a couple facing their fears. The veteran pair are on magnificent form in a drama about love and mortality that is all the more powerful for its restraint. Excellent reviews.



Tuesday, April 9th at 7.30.





01664 822225 - see back page!



## BITS & BITES

### Whitebait £6.50

Enjoy a batch of lightly coated and fried whitebait. They are crispy, crunchy, and oh so moreish. With peppery rocket, red onion, and a homemade tartare sauce that's out of this world.

### Spiced Cauliflower Bites (VE & GF) £6.50

Experience the deliciousness of golden cauliflower bites coated in Moroccan-style quinoa breadcrumbs, paired with sweet chili sauce for a tantalizing treat.

### Little Pigs £6.50

Enjoy freshly baked, bite-sized sausages from our local butcher. Served with a zesty mayo dip that has a kick of English mustard.

### Vegetable Soup £6.50

Let your taste buds bask in the warm hug of a delicious homemade veggie soup, snuggled up with a crusty roll with a portion of butter.

### Chicken Goujons £7

Get your taste buds ready for a treat! These chicken goujons have a crispy crunch on the outside and juicy chicken breast on the inside. Served with fresh rocket and tangy BBQ sauce.

## LOADED FRIES

### The Stilton Ones £8.50

Everything that is good! Crispy fries, fried mushrooms, Long Clawson Stilton sauce, chives and crispy onion.

### Plough Poutine £8.50

With it's origins in Canada, poutine is too good to leave off our menu. Its Crispy fries, dressed in our signature truffle and parmesan, loaded with Long Clawson melting cheese and our house gravy.

## FANCY FRIES

### Herby Fries £4.50

Indulge in our crispy house fries, coated in a hush-hush medley of herbs.

### Truffle & Parmesan £5

Transform plain ol' house fries by adding heaps of parmesan and a drizzle of truffle oil. Trust us, it's a game changer!

### Garlic & Parmesan £5

Garlic, herbs, and cheese: a triple threat of deliciousness. Once you've savoured their awesomeness, you'll be committed for life!

## PROPER ROASTS MENU

Available on Sundays pre-order advised

### Whitebait £6.50

Crunchy whitebait on a bed of rocket with homemade tartare sauce.

### Cauliflower Bites (VE & GF) £6.50

Golden cauliflower bites coated in Moroccan-style quinoa breadcrumbs, paired with sweet chili sauce.

## PROPER ROASTS

Delicious locally sourced meats, crispy, fluffy roasts, smooth mash, tasty veg, plenty of gravy and a Yorkshire pudding - a proper Sunday roast!

### Nottinghamshire topside of beef £15.50

Indulge in our mouth-watering 2-day aged topside of beef, seasoned to perfection with a flavourful herb crust.

### Porcini Mushroom Wellington (Ve) £15.50

Satisfy your cravings with a scrumptious and heart-warming dish served with all the trimmings and vegan gravy. If you're not vegan, make sure to add a Yorkshire pudding.

### Supreme of Chicken £15.50

Delectable free-range chicken, slow-roasted to perfection, and sprinkled with a generous amount of tarragon and a dash of white wine. Accompanied by an irresistible stuffing.

### Slow-roasted pork belly £15.50

Prepare your taste buds for a mouthwatering experience! We're taking slow-roasted cider and apple pork belly, paired with savory stuffing and tangy apple sauce.

## SIDES TO SHARE

Tasty sides to share between friends - Serves 2-4

### Cauliflower cheese £6.50

Mini Sausages £6.50  
Bowl of roasties £4.50

## LITTLE PEOPLE

Mini meals for tiny tummies.

Our kids dinners are small and priced accordingly. If you have big kids or if your days of being a child are long behind you, you could ask for a large kids dinner.

### CHICKEN GOUJONS WITH CRISPY FRIES £11.50

### COD BITES WITH CRISPY FRIES £11.50

### CAULIFLOWER BITES WITH CRISPY FRIES (VE) £11.50

### ADD BEANS OR PEAS £1.50

### SMALL £3.00\* £9.50

### LARGE £9.50

\*small kids portions are not available to grown ups



01664 822225 - see back page!



## PROPER PIZZAS

### No. 1 Buffalo Margarita (V) £9.50

Pomodoro, Mozzarella, Buffalo Mozzarella, fresh basil

### No. 2 Aratro (V) £10

Garlic butter, Long Clawson stilton, roasted mushroom, onion jam.

### No. 3 Pepperoni £10

Pomodoro, mozzarella, pepperoni, caramelized red onion.

### No. 4 Ham & Mushroom £11

Pomodoro, mozzarella, cotto ham, roasted mushroom, truffle oil.

### No. 5 Prosciutto & Rocket £11.50

Pomodoro, mozzarella, prosciutto, rocket, parmesan.

### No. 6 Veggie One (V) £11.50

Pomodoro, mozzarella, roasted red pepper, mushroom, caramelized red onion, olives, oregano, rocket.



## AVAILABLE ON FRIDAYS FROM 4PM

### SIMPLE PIZZAS

No. 10 Cheese & Tomato (VE) £8  
No. 11 Pomodoro, Garlic & Oregano (VE) £7  
No. 12 Garlic & herb (VE) £8  
add cheese + £2.00  
Kids Cheese and Tomato (V) £5  
Kids Pepperoni £6.50

### CALZONE

Pizza and Pies Collide: The Folded Pizza Pie! Introducing our calzone - a delicious, savoury treat that will satisfy your cravings bite after bite.

All of our calzone come with a side salad of rocket and parmesan dressing and garlic butter for your crusts.

### Meaty Calzone

Pomodoro, mozzarella, pepperoni, cotto ham, roast chicken, caramelized red onion.  
£14.50

### Aratro Calzone (V)

Garlic butter, Long Clawson stilton, roasted mushroom, onion jam.  
£12.00

### Veggie Calzone (V)

Pomodoro, mozzarella, roasted red pepper, mushroom, caramelized red onion, olives, oregano, rocket.  
£13.50

## Available Weds, Thurs & Saturday

## PASTRY PIES

This savory dish features a buttery crust, flaky puff pastry top, served with a jug of delicious gravy and a choice of two sides.

### Side 1 Side 2

Proper chips Seasonal Veg  
Fries Mushy peas  
Mash

### Steak & Stilton £15

We're talking top-notch steak sourced right around the corner, slow-cooked in a mouthwatering gravy and topped off with a thick, decadent slice of Long Clawson Stilton.

### Lamb & Mint £15

Get ready for a flavour sensation! Tender chunks of melt-in-the-mouth Lamb swimming in a dark and rich gravy, all dolled up with a hint of mint sauce.

### Chicken & Mushroom £14

Prepare to indulge in a heavenly pie, oozing with juicy roasted chicken, earthy mushrooms, and savory leeks, all cuddled up in a luscious white wine and tarragon sauce.

### Steak & Stout £14.50

Sink your teeth into our locally-sourced prime steak, slow-cooked with Round Corner Reverend Hooker Stout. Plus, what better way to wash it down than with a tasty local stout?

### Homity pie (V) £13.50

Picture a golden, flaky crust hugging a scrumptious filling of potatoes, onions, leeks, spinach and cheese - simply divine!

### Minced Beef & Onion £12.50

This beef and onion pie is a delicious blend of simplicity and flavor! With minced beef, onions, and a classic beef gravy, it's a real treat for your taste buds.

Our pies are handmade with love and care. They're like little works of art that take time to create.

We do our best to keep all our pies stocked, but sometimes demand is high, and we sell out fast.

To save yourself from the heartbreak of a sold-out pie, pre-book your order!

## EXTRA TOPPINGS

Who are we to tell you how you should have your pizza or calzone?

Tweak one of our Proper Pizzas or start with a cheese and tomato base and go to work with these great extras.

£1 Toppings - Caramelized Red onion, Onion Jam, Roasted mushrooms, Roasted red peppers, Olives, Pineapple, Jalapenos

£2 Toppings - Buffalo mozzarella, Pepperoni, Cotto ham, Prosciutto, Roast chicken, Long Clawson Stilton.





# HICKLING WI SPRING FAYRE

AT KINOULTON VILLAGE HALL

**SATURDAY 16 MARCH**

**10.30 AM - 3.30 PM**

**FREE ADMISSION**

**OVER 30 STALLS  
SELLING A WIDE VARIETY OF  
PRODUCTS  
FROM GIFTS & BEAUTY ITEMS  
TO FOOD AND DRINK**

**Also Tombola, Homemade Cakes, Plants,  
and Refreshments**



## COUNCILLORS NEWSLETTER AND UPDATE

**Nevile & Langer Ward  
COLSTON BASSETT, HICKLING, UPPER BROUGHTON, HICKLING PASTURES,  
KINOULTON, LANGAR cum BARNSTONE.**

**A HAPPY AND HEALTHY NEW YEAR TO YOU ALL**

*From Cllr. Tina Combellack*

### SAVE THE SWIFTS

A motion passed at Rushcliffe Full Council meeting made National Headlines.

"The motion to install the nesting bricks was passed unopposed at a meeting of the full council on Thursday By George Torr, BBC News, East Midlands

A council has pledged to make at least 50% of homes on new developments include "swift bricks". Rushcliffe Borough Council said installing the bricks, which have small holes in, would encourage the endangered bird to nest in new communities. The bricks are designed to allow small birds to access a space to nest. Deputy council leader Abby Brennan said the move "has the potential to halt the decline of swifts. The decision will now be attached to all relevant planning permissions for new buildings granted in Rushcliffe under laws that support the environment. Councillors also supported a requirement for new commercial and industrial developments to have a minimum of three swift bricks installed per unit. The council is now reviewing where the bricks can be added to its own existing buildings."

Here is an example of a swift brick - the RSPB say they can also help other wildlife, including red listed species like house sparrows, starlings and house martins. The RSPB said swifts liked to live in houses and churches, squeezing through tiny gaps to nest inside roofs but as more old buildings were renovated and gaps in soffits closed up, swift nest sites were fast disappearing. Swifts were added to the red list, which is the highest conservation priority with species on this list needing urgent action, in 2021.



### Flooding

I just wish to thank all those who helped in flooded areas – there was an enormous co-ordinated response to flooding. Councillors, Officers and outside agencies were working round the clock to ensure everyone's safety. A very prompt cleanup operation also went into action.

As a reminder training is available from the County Council for those who wish to be flood wardens. Having trained wardens in your community is an enormous help when these situations strike. Please contact your Parish Council and myself if you would be willing to become a Flood Warden.

Financial help will be available for those who were flooded.

1. Flooded households in eligible affected areas, who can apply for up to £500 cash to help with immediate costs.
2. Households and businesses significantly affected, who will be eligible for 100% Council Tax and business rates relief for at least three months.
3. Small-to-medium sized businesses in eligible affected areas, who can apply for up to £2,500 from the Business Recovery Grant to help them return quickly to business as usual.
4. Eligible flood-hit property owners, who can apply for up to £5,000 to help make their homes and businesses more resilient to future flooding via the Property Flood Resilience Repair Grant Scheme.
5. Farmers who have suffered uninsured damage to their land will be able to apply for grants of up to £25,000 through the Farming Recovery Fund towards repair and reinstatement costs for farmers adversely affected by exceptional flooding.



Tree Felling  
Lopping,  
Pruning,  
Ground  
Clearance,  
Tree Surgery,  
Fencing,  
Planting,  
Logs,  
Wood  
Chipping,  
Hedges  
Maintained.

Fully Insured

Tel: 01664 822185



**Keith Wadkin & Son**  
Tree Specialist  
Hickling  
Melton Mowbray, Leics.  
LE14 3AQ

Established 1959

The Government's full announcement is available on its website. <https://www.gov.uk/government/news/government-payments-for-communities-affected-by-flooding>  
Riparian owners – those with hedges and ditches, walls drains and gullies on their properties fronting or affecting public areas, are responsible for keeping these clear and free of debris. Driving around I have been pleased to see some wonderful drainage ditch and street clearance. It all helps when heavy rains persist.

**COMMUNITY SUPPORT SCHEME** - Every year I receive £1000 in grant monies to be distributed for various community initiatives. We are coming to the end of the Council Financial year so would welcome any requests as soon as possible. I always like to allocate my fund as it can help many village causes.

The 22/23 fund went to  
Colston Bassett Parish Council Memorial Plaque  
£226.50

Hickling Parish Council Jubilee Event Support  
£200.00

Langar Cum Barnstone Memorial Bench to  
207 RAF squadron at Langar Airfield  
£150.00

Upper Broughton History Group Laptop for  
archives £423.50 to help record details of  
historic documents found in a village  
outhouse. The documents when fully  
translated from the Old English and Latin  
appear to go back to the 16th century.  
(Please contact Cllr Combella for  
more details about the scheme rules)



## TOWN & PARISH FORUM

RCAN are currently planning the spring forum which is taking place at Rushcliffe Arena on Friday 22nd March 2024 from 9.30am – 12.30pm, agenda to follow. The theme is governance. Kaffy Rice-Oxley, CEO of Notts ALC (Association of Local Councils) will be providing an update on the following:

- Code of Conduct – importance of adopting LGA CoC as recommended by NALC & overview
- Civility and Respect Pledge – creating a positive environment so that conflicts don't arise
- Policies – a list of the documents (templates available from Notts ALC) to set you up for success and prevent issues emerging
- Local Council Award Scheme – scheme to support the council's ongoing development

**Gemma Dennis, the Borough Solicitor** will also be attending and will cover:

- Declarations of Interest – recognising the different categories of interest which need to be declared
- Standards complaints – explaining the process for considering a complaint, the options for resolving a complaint and potential sanctions

This is an important meeting and I urge as many Councillors as possible to attend – it is not just the content of the meeting but the networking which is invaluable.

This is proving to be a very busy and pressurised Council term – if you have any queries regarding Council, Community or planning issues please contact me at:

[Cllr.tcombella@rushcliffe.gov.uk](mailto:Cllr.tcombella@rushcliffe.gov.uk)

and I will endeavour to respond as quickly as possible.

***If I don't know the answer I will find someone who does.***

## Parish Council for Hickling & Hickling Pastures.

Summary of minutes from meeting held on 14<sup>th</sup> November 2023, 7<sup>th</sup> December 2023, 19<sup>th</sup> December (draft), 11<sup>th</sup> January 2024 (draft). Full Minutes are published on Parish Noticeboards and at <https://hickling-pc.gov.uk>.

### Raised by parishioners:

- Cllr Combella presented a traffic survey for the consideration of Cllrs. A parishioner emphasised the value of the Lorry Watch scheme to support restrictions already in place. Following subsequent correspondence, Cllrs Playle & Green appointed to investigate.
- Flooding in Hickling – Cllr Green raised the issue of flooding on Main Street and the possible blocked drains near Pudding Lane.
- Parishioner - cars still being parked on the pavement causing an obstruction especially for getting wheelchairs past. PC agreed this is a problem in the village. Cllr Lamb has spoken to owner of one vehicle and it has been moved.
- Correspondance passed to PC from Borough Cllr Combella detailing several points to be addressed at future meetings.
- Cllr Playle - comment on previous correspondence relating to Cllr Combella joining the drainage board. A motion has been presented to parliament about changing the way we deal with drainage and planning applications.
- Dog mess on path between Bridegate lane and canal – parishioner raised concerns about the increase in the amount of dog mess being left on the paths and along the canal. PC noted that there are bins and signs in these areas - Clerk will arrange for reminder to be placed on PC website and look into putting something in the Hickling Standard to remind people to pick





# HANWELL WINE ESTATE

[www.hanwellwine.co.uk](http://www.hanwellwine.co.uk)

**Award-winning English wine from  
Nottinghamshire family vineyards est.1975**



- Vineyard Tour and Wine Tasting
- Tour and tasting gift packages from £25
- Celebrate: birthday, anniversary, wedding, hen-do
- Traditional method vegan English Sparkling Wine
- Still White, Rosé, Cherry & Mead plus our new Red wine
- 5k Charity Wine Run – Sunday 19<sup>th</sup> May 2024
- Craft Fair – Sunday 7<sup>th</sup> July 2024
- **Open 11am-4pm Fri-Sun**
  - Café bar now closed for the winter, reopens May '24
  - Wine shop open all year
  - DIY vineyard trail and wine tasting at your leisure, all year

Full details and bookings [www.hanwellwine.co.uk](http://www.hanwellwine.co.uk)

## Rural Antics Art, Craft and Skills Workshops

- |     |                                                                                                                                                                                                   |
|-----|---------------------------------------------------------------------------------------------------------------------------------------------------------------------------------------------------|
| Feb | Mixed media art, Stained glass, Duck/Obelisk/<br>Basket willow weaving, Earring making, Wool<br>weaving, Macrame plant hanger, Silk painting...                                                   |
| Mar | Botanical silver clay, Quentin Blake style illustration,<br>Acrylic landscape painting, Earring making, Photography,<br>Marquetry, Glass painting, Gel plate printing...                          |
| Apr | Vincent Van Gogh inspired art workshop, Bookbinding,<br>Watercolour gift card, Stacking ring, Quentin Blake style<br>illustration, Macrame bottle bag, Glass plaque or bowl,<br>Willow weaving... |



Hanwell Wine Estate, Hickling Pastures, South Notts, LE14 3QG

[hello@hanwellwine.co.uk](mailto:hello@hanwellwine.co.uk) Tel: 01949 81393

up after their dogs.

- Closure of Peapods nursery – parishioner wished to raise awareness about the closure of the nursery in Hickling Pastures due to lack of staff and suggests that this could be due to lack of bus service for lower waged staff required by the nursery to get to the site. PC to make contact with the nursery to find out why they closed
- Assistance with flood prevention – parishioner raised concerns about how many homes were affected by the flooding in Hickling in the recent heavy rain. Suggest that there are areas along the canal and Dalby Brook that need to be looked at to help prevent further issues. Cllr Playle to contact parishioner to arrange to look at these areas. Another parishioner pointed out that risk of flooding in certain houses is significantly increased by the creation of bow waves when traffic continues to pass through flood water. Clerk to circulate information from NCC about creation of community groups to place out flood signs on roads and issue to be discussed further at the next full PC meeting. Parishioners wished to thank Cllr Combellack for her help during the recent floods and commended her proactive approach in getting the sandbags etc to the places they were needed.

### Administrative:

- Thanks were extended to Julie Holland (retiring Clerk) for her contribution over the last two years.
- The new Parish Clerk, Cate Stokes, was welcomed (7<sup>th</sup> Dec)
- Cllr Green introduced Mike Conway and he has been co-opted as a new councillor.
- Cllr Playle (Chair) opened the session by extending thanks to all councillors and parishioners who offer their time and assistance to make Hickling parish a parish to be proud of.
- It was resolved to post draft version of minutes for meetings on notice boards and website.

### Planning:

- 23/01651/FUL; A E Faulks Ltd, The Wharf, Main Street. Cllrs resolved to support the application with conditions. Decision – granted with conditions.
- 23/01813/FUL: new agricultural building to be used as cattle shed, Turnpike Farm. Cllrs resolved, no objection. Decision – granted.
- 23/01955/FUL: Mr. C Grice, Proposed use of a wide beamed canal boat for additional seating for existing tea room with associated additional parking, Old Wharf Tea Rooms, Main Street. Cllrs resolved to object. Decision - REFUSE PERMISSION. Cllr Playle - suggested that this be followed up with Rushcliffe planning to see if further similar applications could be prevented since this application has been resubmitted and discussed on several occasions.
- 23/01953/AGRIC: Mr. Rob Holt, agricultural storage barn, Agricultural Field To The West Of Main Street, Hickling Road. Cllrs resolved no objection, with conditions. PERMISSION REFUSED – Cllr Playle commented that this was surprising given the wording of the design and access statement on the original application that had suggested this was a permitted development and further comments by the PC would have been ineffectual.
- 8/22/01279/CMA: southern extension to the waste wood and green waste storage yard (part retrospective). John Brookes Sawmill, off the A46, Nr Widmerpool. PERMISSION REFUSED on 7 November 2023.
- Appeal Ref: APP/HGW/535; Turnpike Farm, Hickling Pastures. To remove 109 metres of hedgerow - APPEAL - DISMISSED
- Notice of Proposed Works to trees; reduce and Thin 2 Cherry Trees, Fell Holly, Apple and Pear at 14 Harles Acres
- 23/01981/FUL: Demolition of existing dwelling and erection of a replacement dwelling. Re-use





# LIVE MUSIC at Nether Broughton Village Hall

with

## The Veltones

Music thru  
the decades

rock / disco /  
soul / funk



**Sat 2<sup>nd</sup> March 2024  
@ 7.30pm**

**Tickets £15 including light supper**

**Contact: Christine 01664 822699, Ann  
01664 823296, Brenda 01664 820044**

**Licensed Bar**



## VALE ELECTRICS

ELECTRICAL CONTRACTORS

---

[www.valeelectrics.co.uk](http://www.valeelectrics.co.uk)



APPROVED  
CONTRACTOR

and extension of former agricultural buildings to form 2nd dwelling.  
Replacement of former agricultural buildings to form ancillary buildings.  
Replacement agricultural store and bat roost to rear. New brick pillar  
and gates to front boundary. Sycamore lodge, Green Lane, Hickling  
Pastures. RESOLVED – OBJECT – contravening H9 – local design policy in  
the Neighbourhood Plan.



- 23/02192/FUL: Demolition of detached garage construct single storey rear Flat Roof extension and Associated Rear Patio Area. (Re-submission). 23 Harles Acres Hickling Nottinghamshire LE14 3AF. Resolved – NO OBJECTION
- Ref. 23/01540/LBC; Remove existing windows & replace with double-glazed windows. Church Farm, Main Street. Decision: Granted
- 21/00432/FUL; Dr Matthew Blades. Continued mixed farm and forestry use of part of farm yard for logging enterprise (Retrospective). Land At Hickling Pastures, Melton Road. RESOLVED – OBJECT. The PC is extremely concerned about the impact that the activities at the farmyard are having on its neighbours particularly in relation to the noise, dust and smoke pollution observed. The PC notes the comments and evidence supplied by the neighbours in relation to vehicle movement and machinery operating in unsociable hours. The PC believes this application results in a change of use from agricultural to industrial operation unrelated to the farm; it does not use timber from the farm or even local land. Therefore there is no limitation on its expansion or to prevent development into other industrial operations, which may have further negative impacts.
- 23/01974/FUL Mr & Mrs Dhaliwal. New build dwelling to existing amenity space with associated landscaping. New access with drop kerb and parking. New front gate. Willow House Melton Road Hickling Pastures. RESOLVED – OBJECT; Neighbourhood Plan H1, H10, H14. The proposal requests the building of a new large (>3 bedrooms) dwelling on previously unused land and therefore the PC objects to this application. The PC notes no significant change in the application from previous submission and therefore resolved to object for the same reasons as previously.
- Town & Country Planning Act 1990, Section 211, Notice of Proposed Works to trees. Fell damaged multi-stemmed Ash to the rear of the Plough Inn. Decision - proposed work may proceed.
- 23/02275/FUL Applicant: Rob Brown Development: Erection of 9 new dwellings and extension of existing bungalow and associated landscaping and highway works. Haulage Contractors At Garage And Premises Bridegate Lane Hickling Pastures. Parish Council consultation deadline – 8th February

#### Finance & Assets:

- ACV - The Plough Inn listed on the ACV register 6th October 2023
- Parish Councillor vacancy – one vacancy remains
- Ringfenced monies: Request to release money (£250) to local history group to fund possible third sign to be positioned at the Lengthman's hut. Cllr Combellack requested the amount allocated be checked.
- Parish community notice boards – Due to there being several locations around the village for community groups to post information it was considered that the replacement of the notice board at the end of Long Clawson Lane is not required at this time.
- Coronation money – Discussed planting a tree (£250 RBC granted)
- Refund of money for clearing the hall jitty – Clerk has contacted Via to request a refund for the work carried out on the path alongside the village hall last year.

#### Environment:

- Roadside verges- NCC have now cut and cleared the verges - wild flower seeds to be purchased and spread by Cllr Playle. NCC to be asked to cut and clear in the same manner next year.
- WI Poplar tree – replacement planted.
- Cllr Rowe noted that RBC have offered the village 5 fruit trees to plant – location to be discussed and decided at future meeting of HPC.



## Key Contacts for Flooding Emergencies



### Key reminders

- 1) During a flood event RBC will prioritise the delivery of sandbags to those most vulnerable and at risk of immediate internal flooding of habitable rooms (not garages or gardens)
- 2) Please use the RBC contact details below so that your call can be correctly logged and information shared with our teams
- 3) RBC do not deliver sandbags to commercial businesses
- 4) Be aware that during a flood event the road network may flood which can mean access and the delivery of sandbags to homes may not be possible therefore being prepared in advance is vital
- 5) Check if you have a local flood resilience store in your area operated by local Town and Parish Councils as you may be able to obtain sandbags during an event from this location
- 6) Finally please be prepared – if you're at risk of flooding it's vital to take steps to protect your home by fitting flood protection measures and keeping your own stock of sandbags

## Contacting Rushcliffe Borough Council

0115 981 9911 Monday to Friday 8.30am to 5pm  
0115 981 1143 all other times  
[www.rushcliffe.gov.uk/flooding](http://www.rushcliffe.gov.uk/flooding)

RBC work closely with key partner agencies in a multi-agency approach to emergency planning and response. If your community is affected by a flooding emergency, please see useful contact details and information below.

| Flooding                       |                                                                                                                   |                                                                                                            |
|--------------------------------|-------------------------------------------------------------------------------------------------------------------|------------------------------------------------------------------------------------------------------------|
| Environment Agency             | 0345 988 1188<br><a href="http://www.gov.uk/sign-up-for-flood-warnings">www.gov.uk/sign-up-for-flood-warnings</a> | Floodline: For advice and information on flood risk. Sign up online to receive flood warnings in your area |
| Severn Trent Water (24 hours)  | 0800 783 4444                                                                                                     | For reporting emergencies such as sewer flooding                                                           |
| Nottinghamshire County Council | 0300 500 8080<br>Out of hours<br>01253 502 776                                                                    | Customer contact centre<br>For reporting drainage problems on the highways network                         |
| Power cut                      |                                                                                                                   |                                                                                                            |
| Electricity network operators  | 105                                                                                                               | Free number to call                                                                                        |

## NEW PARISH COUNCIL WEBSITE

The new Hickling & Hickling Pastures village website is now active:

<https://hickling-pc.gov.uk>

We hope that the website will gradually grow over time and that it will be easier for residents to catch up with Parish Council business and to contact Parish Councillors. The website also has sections for village news and for village groups—please keep visiting the website to see what is going on in your village!



### Highways & Street Furniture:

- Cemetery – denotation of unconsecrated area of parish cemetery. As boulders still unavailable a quote for privet hedging obtained. Correspondence from Cllr Combellack stating stones have been obtained. Cost of upkeep of privet hedge to be obtained. Decision to be made before end of Feb as planting needs to take place by then.
- Wild Flower Gateways – Cllr Green to seek grant funding for wild flower village gateway scheme.
- A606 repairs/ resurfacing update – Via East Midlands don't intend to repair road until RSA is put in place. Monthly inspections performed and small repairs completed when needed.
- Traffic calming/HGVs in Hickling:
  - PC have received and reviewed the 28 surveys passed to them from Cllr Combellack relating to residents' desire for traffic calming within the village.
  - Cllr Combellack reported that NC Cllr Cottee has presented this issue to the county council.
  - Cllr Playle - information received from Cllr Green detailing how to apply for traffic calming measures. If the PC is to apply for such measures it requires STRONG support and involvement from community and there is concern that the current survey only assessed the views of a small subset of local residents.
  - PC note that this is a complex issue that will require further investigation.
  - Resolved to write to Notts CC to ask for their suggestions on how to proceed

### Community Engagement:

- Website – now LIVE. Local groups being encouraged to engage with the new site. Councillors now have @hickling-pc.gov.uk email addresses for contact purposes.

### Ward Member report:

- Cllr Combellack reported back from meetings of the Town and Parish and Rural Crime meeting. She has requested that a PCSO attend one of Hickling PC's meeting. Reminder for parishioners to report even the tiniest concern to 101.
- Parking on pavements – requested that a notice be placed in the Hickling Standard asking parishioners and visitors to the village to park considerately and not to park on pavements. Cllr Green to also place request on the new parish website.
- Community Infrastructure Levy (CIF) – Cllr Combellack gave further clarification about the scheme to the PC
- Owthorpe poultry farm objection appeal – Cllr Combellack wished to make the PC aware of the date of the appeal and to encourage people who may be affected by this decision to attend the appeal on 9th January

### Correspondence:

none.

**Finance and Account balances:** see full Minutes on Parish Noticeboards and online.

**Other items:** None.

**Date of next meetings (tbc):** Date for annual precept and budget approval – proposed 29th January 2024.





# YOUR PARISH COUNCIL

The Parish Council is the lowest tier of local government and is made up of representatives living within the local community who have an interest in community matters and who make decisions on behalf of the Parish.

**Your Parish Councillors are listed below with their positions of responsibility:**

**Tracey Prosser:** (Vice Chair) plus Finance & Administration & Assets portfolios - tjprosser67@gmail.com

**Steve Green:** Highways/Street Furniture portfolio, Grant Applications & Snow Warden - steve.j.green@gmail.com

**Chris Lamb:** Community Engagement portfolio - c.m.lamb@me.com

**Peter Playle:** Environment and Highways/Street Furniture portfolios plus Snow Warden - peterplayle@hotmail.co.uk

**Ivor Rowe:** Hickling Pastures, other roles tbc - ivor@rowepeople.net

**Mike Conway:** Harles Acres, roles tbc

**Vacancy: for one councillor**

**Your Parish Clerk** can be contacted: by email - hicklingparishclerk@gmail.com

The Parish Council is here to help; however, many issues encountered in the Parish, do not fall under the jurisdiction of the Parish Council and you should contact the relevant authority in the first instance to assist you.

**PLEASE CONTACT NOTTS COUNTY COUNCIL:**

**www.nottinghamshire.gov.uk** or call **0300 500 8080** - Monday to Friday 8am to 6pm for issues relating to:

Roads & pavements including obstructions and potholes/roadside verges/road gullies or drains/streetlight faults/trees on public land/bus services.

**PLEASE CONTACT RUSHCLIFFE BOROUGH**

**COUNCIL: www.rushcliffe.gov.uk** or call **0115 9819911** for issues relating to:

Planning

Waste – including fly-tipping

Electoral matters.

Council Tax

If you have an issue and you are unsure of who can help, or a previously reported issue remains unresolved then contact the Parish Clerk; hicklingparishclerk@gmail.com

## If you wish to comment on a planning application:

**You can comment online** by searching for 'Rushcliffe Planning' - go to 'simple search' type in 'Hickling' and scroll to find the application.

**Or you can write to:**

Planning & Development  
Rushcliffe Borough Council  
Rushcliffe Arena  
Rugby Road  
West Bridgford  
NOTTINGHAM  
NG2 7YG

Always remember to quote the planning reference.

**Please copy your comments to the Parish Council and Borough Councillor, Tina Combella so that we can take your views into account in our decisions.**

# Diary

3rd Feb: Loxley Saxophone Ensemble, Church, 7pm  
4th Feb: Village Hall Breakfasts  
13th Feb: Film Club - Nomadland, VH, 7.30pm  
27th Feb: Film Club - David Copperfield, VH, 7.30pm  
3rd March: Village Hall Breakfasts  
8th March: Local History Talk: Rufford through the Ages, Village Hall, 7.30pm  
12th March: Film Club - The Great Escaper, VH, 7.30pm  
16th March: WI: Spring Fayre, Kinoulton VH 10.30am-3.30pm  
16th March: Scratchy Beard in Concert, Village Hall, 7.30pm  
29th March: Good Friday Walk (see Church pages)  
7th April: Village Hall Breakfasts  
9th April: Film Club - Supernova, VH, 7.30pm  
18th April: WI: Fashion Show Hickling VH  
27th April: Concert with the Bridge Singers, Church  
30th April: Local History evening at The Plough 5pm-8pm  
5th May: Village Hall Breakfasts  
18th May: Belvoir Angels Open Day, Church, 10-4pm  
19th May: Belvoir Angels Discussion event, Village Hall, 2-4pm  
11th August: WI 50s & 60s Festival at Crich Tramway Museum  
27th Sept: WI Day Trip to Stamford

**Every Thursday at 10.30am:** Coffee Morning in Church (please check venue during winter months)  
**Beaver Scouts** 6-8 years, Tuesday 6.15-7.15pm; **Cub Scouts** 8-10.5 years, Monday 6.00-7.30pm;  
**Scouts** 10.5-14 years, Monday 7.30-9.00pm; all at Kinoulton Village Hall  
**Explorer Scouts** 14-18 years, Tuesday 7.30-9.00pm; Keyworth Scout Hut  
**Contact** for ALL sections: Susanne Youngson 0788 413 6890 gskinoulton@gmail.com

~~~~~

## Would you like to support the Hickling Standard with sponsorship?

Printing costs are an ongoing pressure for us but we are committed to delivering a free copy of the newsletter to every household in Hickling & Hickling Pastures.

We estimate that the costs are approx. £5 a year per household – great value for money!!

Please email [a.terry125@btinternet.com](mailto:a.terry125@btinternet.com) if you are interested in making a small (or large!) contribution to our costs; payments can be made by bank transfer & we can include your name in a list of our supporters (or you can remain anonymous, if you prefer).

## & thank you to those of you who already support us;

Hickling Parish Council    Scarecrows Committee    Samworth Foundation  
Peter and Philippa Jacks.    Adam and Donna Taylor    Pauline Chell  
Mr & Mrs A Chambers    Anonymous  
Andy & Mairi Chapman    Lisa & Paul Mills    & all of our advertisers.

~~~~~



# Village Directory:

|                            |                                                                          |                                              |                                                                                                                                                                                       |
|----------------------------|--------------------------------------------------------------------------|----------------------------------------------|---------------------------------------------------------------------------------------------------------------------------------------------------------------------------------------|
| <b>150 Club</b>            | Philippa Jacks 822622                                                    | <b>Kinoulton School PTFA</b>                 | Sarah Parris 01949 823925                                                                                                                                                             |
| <b>Beavers</b>             | Susanne Youngson 07884 136890                                            | <b>Neighbourhood Watch</b>                   | Tracey Prosser<br>tjprosser67@gmail.com                                                                                                                                               |
| <b>Bellringers</b>         | Lynn Irving 07388 348341<br>lynn.irving74@gmail.com                      | <b>Nottinghamshire Police</b>                |                                                                                                                                                                                       |
| <b>British Legion</b>      | Colin Henson 01949 81453                                                 | <b>Control Room; non-emergency number</b>    | 101                                                                                                                                                                                   |
| <b>Councillors</b>         | John Cottee (County)<br>cjr.john.cottee@nottsc.gov.uk                    | <b>Parish Council: Clerk—Julie Holland</b>   | 01949 823902                                                                                                                                                                          |
|                            | Tina Combella (Borough)<br>tcombella@rushcliffe.gov.uk                   | <b>e-mail: hicklingparishclerk@gmail.com</b> |                                                                                                                                                                                       |
| <b>Cubs</b>                | Susanne Youngson 07884 136890                                            | <b>Parochial Church Council</b>              |                                                                                                                                                                                       |
| <b>Film Society</b>        | Tim McEwen 822834                                                        | <b>Priest in Charge</b>                      | Revd Paul Massey                                                                                                                                                                      |
| <b>Gardening Club</b>      | Mr B. Baxter 01949 81374                                                 | <b>Email: 1revdpaul@gmail.com</b>            | Tel: 01159 892223                                                                                                                                                                     |
| <b>Good Neighbours</b>     | Mrs B. Grundy 01949 81442                                                | <b>Churchwarden</b>                          |                                                                                                                                                                                       |
| <b>Scheme</b>              | Liz Vear 822562 or 07805 407229                                          | <b>Treasurer</b>                             | Alex Thomas 823420                                                                                                                                                                    |
| <b>Guides</b>              | Alison Popplewell 01949 81604                                            | <b>Secretary</b>                             |                                                                                                                                                                                       |
| <b>Hickling Pre-School</b> | Nick 07950 558608                                                        | <b>Scarecrow Committee</b>                   |                                                                                                                                                                                       |
| <b>Hickling Standard</b>   | see previous page                                                        | <b>Karen Buckley (Chair)</b>                 | 07729 768366                                                                                                                                                                          |
| <b>History Group</b>       | Carol Beadle 822195                                                      | <b>Sally Jenkins (Secretary)</b>             | 07971 520711                                                                                                                                                                          |
|                            | Pauline Chell (fundraising) 822835                                       | <b>Scouts</b>                                | Susanne Youngson 07884 136890                                                                                                                                                         |
|                            | Jane Fraser 822845                                                       | <b>Table Tennis: Alison</b>                  | 01664 822761 & Dave 01664 820262                                                                                                                                                      |
|                            | Gill Bloor 822682                                                        | <b>Vale Beaders</b>                          | Elizabeth Evans 01949 81501                                                                                                                                                           |
| <b>Kinoulton School</b>    | Mr Simon Paramore (head)<br>01949 81203<br>office@kinoulton.notts.sch.uk | <b>Village Hall</b>                          | Barbara McEwen (Chair) 822834<br>Tim McEwen (sec.) 822834<br>John Robinson (treas.) 822762<br>Phillipa Jacks (bookings) 823622<br>Lynn Irving 07388 348341<br>lynn.irving74@gmail.com |
|                            |                                                                          | <b>Village Choir</b>                         | Lynne Spencer (Sec.) 01159431008<br>Carol Beadle (Treas) 01664 822195<br>Pauline Chell (Trips) 01664 822835                                                                           |
|                            |                                                                          | <b>Women's Institute</b>                     |                                                                                                                                                                                       |

## Hickling Village Newsletter - Committee

Chair; Tim McEwen - tel. 822834 or [tmcewen@globalnet.co.uk](mailto:tmcewen@globalnet.co.uk)

Treasurer/Advertising;

Andrew Terry - tel. 822088 or [a.terry125@btinternet.com](mailto:a.terry125@btinternet.com)

Jane Fraser - tel. 822845 or [frasermjlk@outlook.com](mailto:frasermjlk@outlook.com)

Barbara McEwen - tel. 822834 or [barbara.mcewen01@gmail.com](mailto:barbara.mcewen01@gmail.com)

Please get in touch with any of us if you have any comments or suggestions; we would welcome any contributions for future issues - articles, opinions, reports, recipes, poems, brain-teasers - whatever you would like to see in print!

### 2024 Copy Dates;

April/May 15/3/24

June/July 15/5/24

Copy must be received before these dates to guarantee its appearance. Please note that the committee reserve the right to edit or omit any material submitted. Opinions expressed in published articles remain the responsibility of the author. Articles may be published anonymously but the committee does need to have details of authorship before publication. For details of our privacy policy, please ask any member of the committee.

**COPY IN ANY FORM IS ALWAYS GRATEFULLY RECEIVED**

e-mail address - [frasermjlk@outlook.com](mailto:frasermjlk@outlook.com)

**Advertising Rates** (one advert for one year - 6 issues.)

Front inside cover - £65

Back cover - £80

Quarter page - £30

Half page - £45

Full page - £60

(enclose payment with copy for the advert and give to a committee member before the copy date.)

Charity, Village Events and Personal (wanted/for sale) adverts are FREE.

**We are very grateful to everyone who supports the village through placing adverts in the newsletter - you make all the difference!**

### Hickling Standard - online edition

The Hickling Standard is also available as a pdf at: [www.hicklingnottsllocalhistory.com/hickling-standard/](http://www.hicklingnottsllocalhistory.com/hickling-standard/) and will shortly be available on the new Parish Council website, too.

~~~~~

The Hickling Standard is printed by Adlards, The Old School, The Green, Ruddington: 0115 921 4863