



WE WANT



YOU!

DO YOU HAVE A HOBBIE OR INTEREST THAT YOU
WOULD LIKE TO SHARE WITH LIKE MINDED PEOPLE?
WHY NOT HOST A GROUP AT THE PLOUGH INN?
LET US HELP PROMOTE AND ORGANISE ATTENDEES.

ASK CHRIS OR KIRSTY ABOUT HOW YOU CAN GET
INVOLVED, POP IN, OR CALL 822225

The

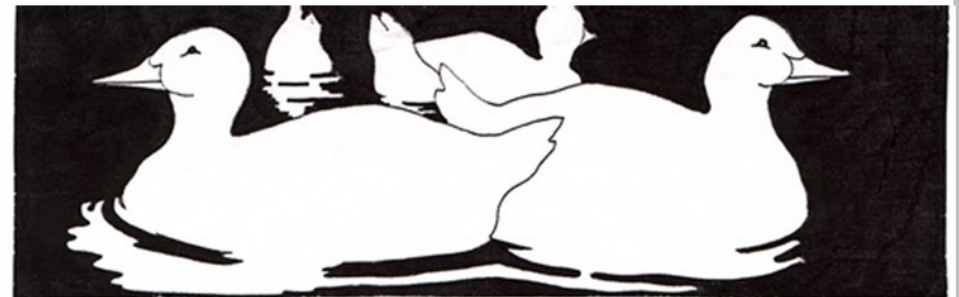
Hickling Standard

Village Newsletter for
Hickling and
Hickling Pastures

Issue 150

October/November 2023

150!
25 years!





“Nurturing the seeds of learning”



Pea Pod Day Nursery is an OUTSTANDING Ofsted rated day nursery, set in the grounds of a small holding on the A606 Melton to Nottingham Road.

Pea pod provides the highest standards of care for babies and children from 6 weeks to 5 years old. Open 7.30am- 6pm, 51 weeks of the year. We have facilities for 29 children, split into three age groups, with each room designed and equipped with that particular age group in mind. Our extensive outdoor provision includes a large secure garden, 2 forest school sites and our own mini farm where the children can play, interact and help to care for the animals!



Where to find us:

Pea Pod Day Nursery
Melton Road
Hickling Pastures
Melton Mowbray
LE14 3QG

Tel: 07577209625

enquiries@peapod-daynursery.co.uk

This is our 150th Issue & our 25th Birthday!

Our founding principles were that every household in the parishes would receive a free copy of the Hickling Standard for as long as we could keep it going and that everyone should be able to contribute; whether it's long or short, serious, funny or quirky.

Please contact us if you would like to get more involved - send us articles, messages, photos and news. Would you like to help with editing?

To read about how it all began and to view all the issues produced over the last 25 years, go to:
www.hicklingnottsllocalhistory.com/hickling-standard-the-first-5-years/

We really hope that you enjoy reading the Hickling Standard - it is your newsletter and we love it most when as many people as possible get involved.



Thank you to everyone who has contributed or supported us in any way over the last 25 years and, 'Here's to many, many more!!'

Tim, Barbara, Andrew & Jane.

HOSPICE SET TO HOLD 'HOTTEST' EVENT IN THE VALE!

This November sees the introduction of a brand-new event in the fundraising calendar of a local charity – claimed to be the 'hottest' the Vale has seen... which is quite a statement considering it will take place the week after Bonfire night celebrations!

Dove Cottage Day Hospice are holding their first ever 'Firewalk' on Saturday 11th November, in the hope that it will encourage local supporters to raise funds for the charity.

Firewalking is a practice that involves walking on a bed of hot coals or embers and has been used for centuries to test physical and mental limits and explore the relationship between fear, fire, and belief. Firewalks are designed to empower and inspire participants through transformative lessons and experiences.

The event begins with a seminar from a certified firewalking master, who will coach participants on how to prepare themselves for the challenge, and then they will be invited to walk over a carpet of coals which can reach temperatures of 1200 degrees Fahrenheit!

Walking over hot coals might not sound like everyone's cup of tea, but you don't have to be an adrenalin-junkie to benefit from the effects of firewalking.

Firewalking Instructor Barry Collins said: *"Firewalking is not just about walking on fire..."*



It offers the opportunity to explore the limiting beliefs some people hold, whilst providing the environment to discover the resources we have inside to overcome fear, uncertainty and challenge. Most anyone can do it... you just have to make the decision!"

Dove Cottage are partnering with the UK's leading firewalking company to provide a professional and exciting experience. Tickets cost £30 to take part, with each entrant asked to raise additional sponsorship on top which will go towards the work of the charity.

For more information please contact Dora, Fundraising & Marketing Lead at Dove Cottage on fundraising@dovecottage.org

Hickling Scarecrow Festival 2023

What another fabulous weekend we had!

After an initial few hiccups, which were soon sorted out, our weekend began with a lighter than usual footfall, largely down to the sweltering heat. As the weekend went on and the weather cooled off slightly on the Sunday, along came the crowds. We literally had thousands!

Our visitors were treated to nearly 70 scarecrows all depicting various occupations, some were easy to decipher, others took some brain power!



The worthy winners were....

Public vote:

- 1st Ken Green- Deep sea diver
- 2nd Patrick and Claire Wadkin -Butcher
- 3rd Barbara McEwen - Dog Walker

Mayor of Rushcliffe vote:

Anthony Peet - Gamekeeper and Poacher



The scarecrow committee have really enjoyed bringing this weekend to you each year, but we are very aware that we can't do it without you. Thank you to everybody who has contributed to the weekend, however big or small. If you would like to join us on the committee next year, we would love to see you!

Karen Buckley

Chair, Hickling Scarecrow

Committee

07729 768366

For more photos, detail & the winners of the Children's Competition:

- Scarecrow Festival: search 'Hickling Scarecrow Festival' on Facebook or Nextdoor
- Local History Gp Scarecrows pages: www.hicklingnottsllocalhistory.com/scarecrows-2023/



The Answers!!

1. Fisherman
2. Waiter
3. Judge
4. Welder
5. Street artist
6. Butcher (2nd place)
7. Air hostess
8. Mechanic
9. Musician
10. Dog walker (3rd place)
11. Beekeeper
12. Mechanic
13. Astronaut
14. MP
15. 1950s housewife
16. Easter bunny
17. Scientist
18. Amazon delivery driver
19. Pirate
20. Deep sea diver (1st place)
21. Road worker
22. Tree surgeon
23. Gardener
24. Air traffic controller'
25. Admiral
26. Pilot
27. Lifeguard
28. Chef
29. Mechanic
- 30/31. Gamekeeper and poacher (mayor's



choice)

- 32/33. Tree surgeon and Saw doctor
34. Draughtsman
35. Beekeeper
36. Policeman and robber
37. Villain (Oddjob)
38. Marmalade maker
39. Priest
40. Fireman
41. Postman
42. Santa Claus
43. Women's footballer
44. Banker
45. Painters
46. Stripper (wallpaper stripper!)
47. Jersey (country OCCUPIED during WW2)
48. Window cleaner
49. Scientist
50. Digger driver
51. Construction worker
52. Ukraine (an occupied country)
53. Surgeon
54. Fortune teller
55. DJ
56. Bin man
57. Canine massager
58. Gardener
59. Tiger tamer
60. Pork pie maker
61. Chef
62. Scarecrow
63. Parachutist
64. Lion tamer
66. Builder
68. Flowerpot men
81. Gardener
- Hickling Pastures. Air ambulance helicopter

See Local History website for videos: The Spitfire & Lancaster flypast & a vintage car drive-thru!



Squirrel Stores

The biggest "little" shop in the Vale of Belvoir



**Delivery service now available
on orders over £20**

(excluding cigarettes and tobacco)

**Contact us on 822315 or call in
to the shop for more details.**

- Greetings cards
- Artisan jams, chutneys, honey etc
- Newspapers and magazines
- Wines, beers, local ales and ciders
- Freshly baked Hambleton bread and produce delivered daily
- Selection of butcher's meat produce and Melton Mowbray pork pies
- Local cheeses
- Large variety of fresh fruit and vegetables (personal weekly fruit delivery and veg boxes available)
- Dry cleaning service
- Refill station
- Fresh sandwiches, sausage rolls, samosas etc

Opening hours:

Monday to Saturday 7am to 7pm

Sunday and Bank Holidays 8am to 1pm

01664 822315

The Sands, Long Clawson

The next HICKLING VILLAGE BREAKFAST

Sunday October 1st

Village Hall 9 – 11am

Full English Breakfast £5.50

Vegetarian Full English £6.00

Children's Full English £4.00

Bring your family, meet your friends.

ALL WELCOME

If possible please book your places by Monday Sept. 25th to help us with the catering. **Walk-ins still welcome!**

Bookings / queries Pauline 01664 822835

Barbara 01664 822834

VILLAGE HALL

SCARECROW WEEKEND REFRESHMENTS

A huge thank you to everyone who helped with refreshments in the Village Hall during Scarecrow Weekend.

The generosity and skill of everyone who bakes is amazing. Every year I'm bowled over by the number of beautiful cakes given to us.

Setting up the hall on Friday, making bacon cobs, tea and coffee, clearing tables, taking the money, washing up, clearing and cleaning the hall on Sunday evening - the list of jobs is endless but they were all done with such good grace, despite it being the hottest weekend of the year. Did the donation of some bottles of Prosecco to the workers help at all? I couldn't possibly comment!

So many people are involved that I can't thank everybody by name but their generosity helped us raise **£2,868-21p** over the weekend. After expenses we made a profit of **£2,073-26p**. From that we have donated **£500** to this year's main charity, Rainbows Children's Hospice. The remainder will go towards the running and maintenance of the Village Hall.

To everyone from Hickling (Kinoulton, Upper Broughton, Nottingham and beyond)

Thank you! You are amazing and we couldn't do it without you!

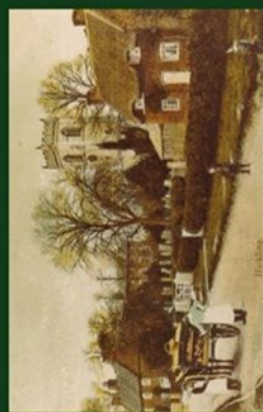
Barbara McEwen

(On behalf of Hickling Village Hall Committee)



Local History Group
Hickling
Nottinghamshire

www.hicklingnottslocalhistory.com



Are You Interested in Local History?

~~~

Research  
Transcribing  
Recording memories  
Events

~~~

Old photographs
House Deeds
Family records
Businesses/Clubs/Societies

~~~

We are looking for all kinds  
of involvement.

Please contact us:

if you would like to be involved  
in the local history group **or**  
if you have any projects that  
you would like to work on **or**  
if you have material that we  
could add to our collections.

~~~

info@hicklingnottslocalhistory.com

Facebook

Speak to: Carol Beadle, Gill Bloor,
Pauline Chell, Jane Fraser.

Messages

Please contact us with your
messages - we look forward to
hearing from you.



Welcome to Lisa and Paul Mills who have recently moved in to Appletrees on Main Street, near the Village Hall. They made the mistake of moving in just before Scarecrow weekend and were promptly recruited to Village Hall duties—a great introduction to life in Hickling!

If you have recently moved in to Hickling or Hickling Pastures and we haven't said, 'Hello!', we hope that you are enjoying living in the village and your new neighbours look forward to meeting you.

~~~~~

### Eric Parkes.

Myself and my family have been truly overwhelmed with the amount of cards, flowers and kind words we received after the death of my husband Eric John Parkes. Eric was a true Hickling man who was born and bred here and farmed in the village all his life at Church Farm. As such, it is comforting to know that he was held in such high regard by the village and all that knew him.

We would like to say a big thank you to all at St Luke's Church and the members of the Hickling Women's Institute and their team of helpers who helped make the service and the day of the funeral run smoothly. A special thank you must also go to David Robinson for his part on the day of the funeral.

Beverley Parkes and Family.

~~~~~

Film Club.

The Film Club is restarting in the Village Hall; beginning on Tuesday September 26th at 7.30pm with Mincemeat, featuring Colin Firth.

The Film Club was an incredibly popular village gathering before Covid intervened; please come along and support it again now! If you would like more information, please contact Steve Watson, Nicole Sweet or Emma Green. Thank you!

We're Looking for a New Editor!!

After stepping in temporarily following Maggy's retirement from editing the Hickling Standard, we are now looking for a volunteer to continue the good work; please contact Jane at frasermjlk@outlook.com

- The newsletter is collated on Microsoft Publisher at the moment, but that can change
 - Help & support will be given by the team
 - Involves 8-10 hours every two months (6 issues per year)



 The Basin, Main St, Hickling
Melton Mowbray, LE14 3AH

 01664 820448

 relax@theoldwharf.co.uk

 www.theoldwharf.co.uk

Time to relax and unwind

TEAROOM OPEN SEVEN DAYS A WEEK FROM 9.00 AM - 4.00PM

Please note the kitchen closes at 3.15pm and last drinks orders are at 3.45pm



 Find us on Facebook

Luna Counselling & Psychotherapy


- **Pluralistic Counselling and Psychotherapy** including CBT, Person-Centred, Psychodynamic, Play Therapy and Gestalt.
- **Face to face, online** and via **telephone**.
- Based in **Cotgrave**, Nottingham.
- Ages **children to older adults**.
- Accredited Member of the **National Counselling Society** and on their **Children & Young People register**.
- **Fully insured, level 5 trained** and holds **enhanced DBS** certificate.
- Low mood and **depression, anxiety, intrusive thoughts, OCD, bereavement** and grief, **anger** and frustration, **phobias, relationship issues, lifework, motivation, self-defeating behaviours**.

Ellie Meakin

Ellie@LunaCounselling.co.uk

07444 529 521

Please contact for prices



HICKLING FILM SOCIETY PRESENTS...

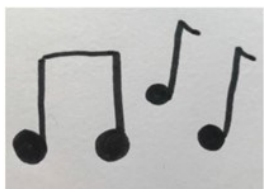



MOVIE NIGHT

TUESDAY 26TH SEPTEMBER - 7 30 PM

HICKLING VILLAGE HALL

Made with PosterMyWall.com



Music



Sign



Storytime

A fun music and story group for babies and preschoolers supported by Makaton signing.

Mondays 10-11am during term time

St Luke's church, Kinoultun.

£3 per family group per session.

for more information send Cate a message

at musicsignstorytime@gmail.com or 07886169691

Table Tennis at the Village Hall!

Monday nights 8 – 10pm

It's been a great season for Village Table Tennis. There have been lots of new friendly faces and so much enthusiasm that we extended our season beyond the Easter break for the first time. Our ethos of 'simply social' is at the heart of our sessions which offer a friendly knock about or a more intensive game and, of course, the chance to socialise.

We'll be taking a break for the summer and will return to the Village Hall on Monday 11 September at 8pm.

For more information call Alison 822761, or Dave 820262.

- Whether your preference is to have a friendly knock-about, or to seek the challenge of an intensive game, our flexible sessions are perfect for you
- Our season runs through the winter from late September to Easter, with a festive break
- Cosy village hall venue with superb facilities and tables for full match play standard
- Comprehensive set up to and quality equipment provided according to ability
- Enjoyable all round exercise in an exceptionally friendly environment, whatever your experience and ability
- Tea and biscuits included, providing an opportunity to relax and socialise

SIMPLY CALL 01664 822761 or 01664 820262
FOR AN INFORMATIVE CHAT

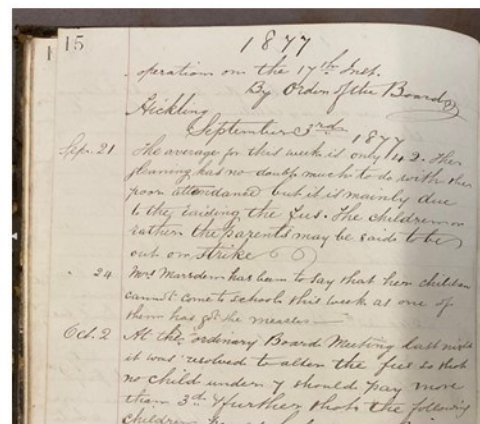
Try our outdoor table at the Wharf in Hickling.
Bats and balls available from The Old Wharf Tearooms



Headmaster's log book: 1876-1897

(one of our volunteers is currently transcribing the logbook which is full of the most fascinating snapshots of village life—in the meantime, a short extract)

Parents and Children go on Strike!



Set 17th 1877: Reopened school after five weeks holiday. There are only 44 children present. Owing to the very bad weather the harvest has been delayed and a few children may be now gleaning. I understand that many of the children are being sent to other schools on account of the Board raising the fees. The parents say that they cannot afford to pay the fees fixed and that they shall not send them here to school. At a meeting of the Board held on Monday September 3rd it was resolved that the school fees should

be altered to the following scale. Labourers children pay as before namely children under seven years of age to pay 2d per week: children above seven years of age to pay 3 pence per week but no abatements.

The children of all other classes to pay 6 pence per week except when more than two attend from the same family every additional one beyond two to pay 3 pence per week. This arrangement to come into operation on the 17th inst. By Order of the Board Hickling September 3rd 1877.

Sept 21st. The average for this week is only 42. The gleaning has no doubt much to do with this poor attendance but it is mainly due to the raising the fees. The children or rather the parents may be said to be out on strike.

Sept 24th. Mrs Marsden has been to say that her children cannot come to school this week as one of them has got the measles.

Oct 2nd. At the ordinary Board Meeting last night it was resolved to alter the fees so that no child under 7 should pay more than 3d and further that the following children pay as labourers viz John Corner, Emily Corner, William Corner, R Copley and John & W Jeffreys.

Oct 8th Commenced having fires in the mornings.

Oct 12th. On Monday I began a system of marks which has had a beneficial result for besides being a stimulant to progress it makes the children more careful about their personal appearance—almost each child has come to school daily with polished boots which was previously a rare thing amongst the boys. The attendance this week is an improvement on the two last weeks but there is still room for better attendance. Average this week is 82.

Oct 15th. Business of an urgent nature called me from home this morning. I left the school in the charge of Mrs Wilkinson.

Freeview
EST 1982

HEWITT'S AERIALS

HUSBAND & WIFE TEAM

**DIGITAL TV AERIALS FITTED
& REPAIRED • FREESAT
EX-POINTS • TUNING
SETUPS • DIAGNOSTICS**

**FREE QUOTES • ALL AREAS
OAPs DISCOUNTS**

CONTACT MANDY OR DAVID

07554 387206
01664 820430

Corner Cottage, Clawson Lane, Hickling LE14 3AB

Hickling Village Hall
Strictly Why Not Dance?
At Hickling Village Hall
Main Street, Hickling, LE14 3AQ
Thursdays - 4pm to 6 ish.

Ballroom, Latin. An hour with instructor and time to practice afterwards.
£15 per couple - come and try some new moves.

Exercise the mind and the body and reward yourself with a cup of tea and some homemade cake.
Couples only at the moment.
No Booking required.



**Hickling Local
History Group**



**Information
Boards Project**

Views of Hickling—notecards
FOR SALE

~ 2 Designs ~ £4 per pack ~ Packs of 8 ~
Available from Pauline Chell 01664 822835



Local History Group



Email contact list:

general news and updates about projects that we are working on.
To join the mailing list, please send your name and details to us at:
info@hicklingnottslocalhistory.com

Quarterly Gatherings at the Plough Inn.

Dates for your diary—please look out for the posters for more detail: drop in, bring things, talk about all-things-Hickling!

Tuesday 31st October 2023 5pm-8pm

Tuesday 30th January 2024 5pm-8pm

Tuesday 30th April 2024 5pm-8pm



Local History Night At the Plough

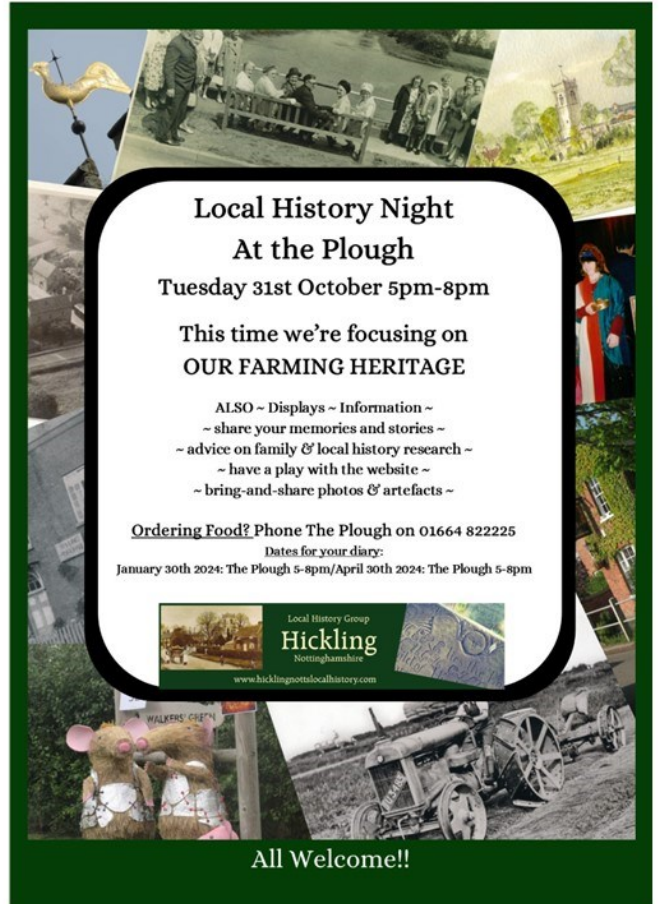
Tuesday 31st October 5pm-8pm

This time we're focusing on
OUR FARMING HERITAGE

ALSO ~ Displays ~ Information ~
~ share your memories and stories ~
~ advice on family & local history research ~
~ have a play with the website ~
~ bring-and-share photos & artefacts ~

Ordering Food? Phone The Plough on 01664 822225

Dates for your diary:
January 30th 2024: The Plough 5-8pm/April 30th 2024: The Plough 5-8pm



All Welcome!!



Christmas Fair

Saturday
4th November

in Keyworth Village Hall **10 am – 2 pm**

Tea & Coffee available from 9.45am

Lunches served in the

Centenary Lounge from 11.45 am

*Stalls with seasonal items, crafts,
cards, cakes, jewellery, decorations
and unique gifts for Christmas*

Admission £1.50 (child accompanied by adult – free)

Proceeds in aid of Keyworth Methodist Church Funds

Hickling W.I.

Have you ever thought of joining Hickling W.I.? As a friendly and active group we meet at Hickling Village Hall every 3rd Thursday in the month & we're always looking for new members.

We arrange trips/visits in between our monthly meetings so why not pop along to a meeting or Pauline Chell 01664 822835 for further information.

By the way we don't sing Jerusalem or make jam.

Hopefully see you soon

From the Hickling W.I. committee



3 OCT 7.30pm WI Darts at the Plough

19 OCT 7.30 Cookery Demo & tasting - WINTER WARMERS - Hickling Village Hall

7 NOV 7.30 WI Darts at the Plough

16 NOV 7.30 Making Christmas Wreaths & decorations - Hickling Village Hall

14 DEC 10am - WI ITEMS to raise money for Blood Bikers auctioned at Shoulers. 2024

16 MARCH 10.30-3.30 SPRING FAYRE in Kinoulton Village Hall

18 APRIL 7.30 FASHION SHOW in Hickling Village Hall

NEWS FROM HICKLING W.I.

The Hickling WI once again enjoyed being involved with the Scarecrow weekend by having a stall and making scarecrows. Members of the WI are often involved in other Hickling community activities and so during the weekend they were seen helping with refreshments; in the Church; at the car parks and on stalls albeit wearing a 'different hat'. It is because so many people volunteer and give their time so generously that community events in Hickling are always such a success.

On the first Tuesday of every month at 7.30pm members meet at the Plough to play darts. No one is particularly skilful, and most are amazed if the three darts thrown stay in the board. The evening is free and open to non-members so come along and join us.

On Thursday 19 October at 7.30pm in Hickling Village Hall, one of our members, Anne Copley will be doing a cookery demonstration entitled 'Winter Warmers' with tasting afterwards. If you are interested in coming along please contact Pauline 01664 822835.

On Thursday 16 November at 7.30pm in Hickling Village Hall, Veronica Skuriat and Gilly Wilkinson will be holding sessions on making various Christmas decorations – all equipment and materials

LADY FRIDAY Are you short of TIME?

I could support you when you're working or on holiday

PETS
Regular or occasional dog walking & pet care at your home

CHILDREN & ELDERLY RELATIVES
Meet children from school or take them to their recreational activities*
Accompany elderly relatives to appointments or shopping, or whatever

HOME
Water plants, take mail in & generally check all is well

Do not hesitate to ask - I am mature and versatile!
References available on request, inc DBS*

Angela Sallis, 6 Melton Road, Long Clawson, LE14 4NR
01664 822597 angela_sallis@btinternet.com

Belvoir Foot Health Clinic

DipCFHP MPSPract MPSP5909

 **07714876006**

 belvoirfoothealthclinic.co.uk

 Suite G, Cotgrave Business Hub, Candleby Lane, Cotgrave, Nottinghamshire, NG12 3US.

provided. Wreaths can be made using vines from our local vineyard. If you are not a WI member and want to join our workshop, please contact Pauline.

To join Hickling WI, please contact Jeanne Watts, Liz Vear or Pauline Chell who all live in Hickling. The cost is just £30 a year. You do not have to live in Hickling to be a member and over half of our members live elsewhere; coming from Trowell, Keyworth. Nether Broughton, Wollaton, Melton Mowbray, Long Clawson etc.

The Hickling WI likes to support a local charity and last year made over 80 reading cushions for Ukrainian refugee children. This year we are hoping to raise over £1000 for the local BLOOD BIKERS' CHARITY by doing our own antique bargain hunt challenge. Please support us and bid for something at the auction at Shoulers in Melton Mowbray on 14th December.

~~~

## PLEASE HELP HICKLING W.I. RAISE £1000 FOR THE BLOOD BIKERS' CHARITY

Blood Bikers are a local charity who deliver urgent NHS supplies across the area. They have saved many lives and only continue to do so if they get donations to pay for fuel and other expenses. The charity has no paid employees, and everyone involved is a volunteer.

The HICKLING WI have set a target to raise £1000 for Blood Bikers which will go a long way in helping them continue for another year.

To raise this money the WI have linked up with SHOULER & SON AUCTIONEERS in Melton Mowbray to do a Bargain Hunt Challenge. The WI have been locating items during the summer months by visiting car boots, antique fairs, jumble sales etc.

These items will be auctioned off by Shouler & Son at their County Auction Room on Thursday 14 December at 10am. Shouler & Son have kindly offered to support Hickling WI and have waived all costs and commission. Therefore, all money collected will go directly to Blood Bikers.

If you have any item you would like to sell or donate for this challenge, please contact Pauline Chell 01664 822835 or text Carol Beadle 07983 486695

Smaller items and anything perhaps not suitable for an auction will be sold on a local stall with all proceeds also going to the Blood Bikers

Please support us by bidding for our items either online or by attending the auction at  
**THE ANTIQUES, VINTAGE & COLLECTABLES AUCTION-**

**THURSDAY 14<sup>TH</sup> DECEMBER at 10AM**  
**At COUNTY CHAMBERS, KINGS ROAD,**  
**MELTON MOWBRAY LE13 1QF**

**THANK YOU**





## Letter from St Luke's

Dear Parishioners,

The saying or singing of the psalms is a regular part of our worship. There are 150 of them, and they reflect on all manner of circumstances which were familiar to the psalmist (or psalmists), and with which we are familiar after all this time. As it is harvest time, we find in Psalm 65 a reflection on our dependence on God for our food, without which we cannot exist. We have devised methods for preserving food on a larger scale than in the time of the psalmist, who relied on small local granaries. We can cope with fluctuations in the harvest from year to year, however the problems with the harvesting and shipping of grain from Ukraine show us the limitations of our abilities when disaster or evil strikes. We cannot succeed single-handed. What we do is dependent on our relationships with those around us. If we care for those around us then we are more likely to live in harmony, but above all if we let the word of God guide us and inspire us we will be able to prevent or overcome the difficulties of the world around us. Let us give thanks to God for the goodness of the earth and for the good harvest from our minds.

*You crown the year with your goodness, and your paths overflow with plenty.*

*May the pastures of the wilderness flow with goodness and the hills be girded with joy.*

*May the meadows be clothed with flocks of sheep and the valleys stand so thick with corn that they shall laugh and sing.*

Best wishes

Robert C Jones

## WI Bench in St. Luke's Churchyard



Installed in September 2023 to commemorate the **Coronation of King Charles III**

Surprisingly, this is the first bench to be installed in Hickling churchyard—please take a few minutes to take a look and to sit and enjoy this beautiful place.

## Services at St Luke's Churches in October and November 2023

| Date   | Day                                               | Kinoulton |                                        | Hickling |                               | Upper Broughton |                                     |
|--------|---------------------------------------------------|-----------|----------------------------------------|----------|-------------------------------|-----------------|-------------------------------------|
|        |                                                   | Time      | Service                                | Time     | Service                       | Time            | Service                             |
| 24 Sep | 16th Sunday after Trinity                         | 11:00 am  | Morning Prayer                         | 6:30 pm  | Holy Communion                | 9:30 am         | Morning Prayer                      |
| 1 Oct  | 17th Sunday after Trinity                         | 9:00 am   | Holy Communion                         | 6:30 pm  | Harvest Festival              | 10:00 am        | Morning Prayer                      |
| 8 Oct  | 18th Sunday after Trinity                         | 11:00 am  | Morning Prayer                         | 9:00 am  | Holy Communion                | 10:00 am        | Morning Prayer                      |
| 15 Oct | St Luke Patronal Festival                         |           |                                        |          |                               | 9:00 am         | Holy Communion                      |
| 22 Oct | 20th Sunday after Trinity                         | 11:00 am  | Morning Prayer                         | 6:30 pm  | Holy Communion                | 10:00 am        | Morning Prayer                      |
| 29 Oct | Last Sunday after Trinity                         | 9:00 am   | Holy Communion                         | 6:30 pm  | Evening Prayer                | 10:00 am        | Morning Prayer                      |
| 5 Nov  | Feast of All Saints<br>Commemoration of All Souls | 6:30pm    | Commemoration of the Faithful Departed | 9:00 am  | Holy Communion for All Saints |                 |                                     |
| 12 Nov | Remembrance Sunday                                |           |                                        | 10:50 am | Remembrance Service           | 9:30 am         | Morning Prayer & Act of Remembrance |
| 19 Nov | 2nd Sunday before Advent                          | 11:00 am  | Morning Prayer                         | 10:00 am | Morning Prayer                | 9:00 am         | Holy Communion                      |
| 26 Nov | Feast of Christ the King                          | 11:00 am  | Morning Prayer                         | 6:30 pm  | Holy Communion                | 10:00 am        | Morning Prayer                      |
| 3 Dec  | Advent Sunday                                     | 9:00 am   | Holy Communion                         | 6:30 pm  | Evening Prayer                | 10:00 am        | Morning Prayer                      |

### Ministry Team:

Priest in charge: Revd Paul Massey (Rector of Cotgrave):

Email: [rector@allsaintscotgrave.co.uk](mailto:rector@allsaintscotgrave.co.uk) Tel. 01159 892223

Lay Ministers:

Sheila Hill. Tel. 01949 81096 e-mail [sahill18@btinternet.com](mailto:sahill18@btinternet.com)

Robert C Jones Tel 01664 822916 e-mail [robert.c.jones02@gmail.com](mailto:robert.c.jones02@gmail.com)



# STEVEN M. DAW

## PLUMBING, HEATING and GAS SERVICES

Plumbing work – repairs; Central heating and boiler installations; Boiler servicing; Central heating power flushing; Bathroom design and installation

Over 30 years experience

Based in the Vale of Belvoir

Tel: 01664 822648 - Mobile: 07860 285031

Email: [stevendaw@btinternet.com](mailto:stevendaw@btinternet.com)

[www.stevendaw.com](http://www.stevendaw.com)



**Freeview**  
EST 1982

## HEWITT'S AERIALS

**HUSBAND & WIFE TEAM**

**DIGITAL TV AERIALS FITTED**

**& REPAIRED • FREESAT**

**EX-POINTS • TUNING**

**SETUPS • DIAGNOSTICS**

**FREE QUOTES • ALL AREAS**

**OAPs DISCOUNTS**

CONTACT MANDY OR DAVID

**07554 387206**

**01664 820430**

Corner Cottage, Clawson Lane, Hickling LE14 3AB

## A.R. PEET LTD

EST. 1979



*Specialist retailer of*  
**WOOD, GAS, ELECTRIC & MULTIFUEL STOVES**

**01664 822397**

[www.arpeetstoves.co.uk](http://www.arpeetstoves.co.uk)

[info@arpeetstoves.co.uk](mailto:info@arpeetstoves.co.uk)

## St. Luke's Church

A big thank you to everyone who supported our Refreshments venue during the Scarecrows weekend. We have few facilities but everyone on the rota worked hard to make it welcoming and pleasant for all. All the cake makers produced a wonderful selection and we also had a fantastic group of helpers who set up gazebos and tables, provided chairs (Richard Collishaw), and cleared it all away. Thank you too to the Scarecrow committee for their commitment and outstanding efforts to ensure a stunning weekend.

The church building is a wonderful village icon, and it deserves to be well cared for. We are struggling to manage it on our own. **Would you be willing to help us to clean it thoroughly when needed?**

**Before the Christmas events our proposed date is Saturday 4th November 10.00 am - 12.30 pm.**

Refreshments provided, equipment provided, **we just need some People Power.**

**Could that be you?**

If you would like to help even an hour would be wonderful.

**Please contact me at alex28thomas@btinternet or on 07788 518156**

Our next date will probably be in early March, so if you would prefer a weekday, please let me know.

Alex Thomas (Treasurer) on behalf of the PCC



## Weekly Coffee Mornings on Thursdays from 10.30am.

Come and meet your friends, enjoy homemade cakes etc. and a warm welcome. No set charge, just a voluntary donation if you can.

## This is your Village Church.

If you would like to support it in any way please contact:

Alex Thomas at [alex28thomas@btinternet.com](mailto:alex28thomas@btinternet.com)

**Could you offer a cake occasionally? Help with cleaning twice a year by rota?**

**Help at events etc?**





We are located in  
Hickling Village  
Hall  
Monday – Friday  
9.15am-3.15pm  
during term time.  
You can visit our  
website

[hicklingpreschool.co.uk](http://hicklingpreschool.co.uk) for more information on how to get involved or  
how to register your child.



### The Royal British Legion Vale of Belvoir Branch REMEMBRANCE

Our Remembrance Service this year will be held at St Luke's Church, Hickling on Armistice Day, Sunday 11 November commencing at 10.50am and will be followed by Wreath Laying at Hickling War Memorial. The pupils

and staff of Kinoulton Primary School assemble at the Kinoulton War Memorial for their own Remembrance ceremony of wreath laying on 9 November at 10.50am.

### POPPY APPEAL

The Poppy Appeal this year officially starts on 22 October and ends 11 November. Local static poppy sales boxes may appear before then at public locations, including The Neville Arms, The Plough, The Wharf, Sarsfield's Tea Rooms and possibly more. Additionally, there will be house to house collections.

The Armed Forces community comprises around 10 million people including veterans and dependants. The Annual Appeal raises around £50 million to fund issues such as recovery and rehabilitation, post-traumatic stress disorder, support and advice for housing, employment, and financial worries. Every purchase through the Royal British Legion's Poppy Shop or donation to the Poppy Appeal goes 100% to the charity and its work, helping members or former members of the Armed Forces Community - including those in the Royal Navy and the Royal Air Force as well as the British Army.

It funds Recovery Centres and Care Homes around the country. The Battle Back Centre at Lilleshall, founded in 2011, was established with the aim of helping to ensure the best possible recovery for the Armed Forces community, whether it is returning to duty or successfully transitioning to civilian life. Your donations and wearing a poppy for remembrance of the fallen will be very much appreciated.

Michael Chapman  
Vale of Belvoir Branch



### Ken and Margaret Rastall

A retirement party for Ken was held at the Plough to celebrate his 50 years working for us, here at Sherwood Farms. Ken has been an integral part of life here on the farm along with Margaret who have helped develop and manage the poultry side of the farm.

They have always been passionate about their work here and will be greatly missed and we wish them a happy retirement together.

(The Parker family)

### A Few Words from Ken:

I didn't mind school but like most country kids, there was always something more interesting going on at home so I left school as soon as I could and went straight to Agricultural College at Caythorpe in Lincolnshire. I guess my father, who had worked with poultry all his life, could easily have told me a lot of what I had to read-up on in text books, but by the 1970s, people were beginning to have more of a regard for paper qualifications and a City & Guilds Diploma in Poultry Husbandry gave me the confidence to go for my first job, down south, where I learned to put theory into practice. I enjoyed the job and am still in touch with people from that time. In fact, I might well have stayed there, and how different my life would have been, but I started courting Margaret. Gatwick suddenly seemed a very long way from the Vale of Belvoir! Being offered a job by Mr Philip Parker at Sherwood Farms meant being able to come home, start married life with Margaret and spend the next fifty years doing a job I have loved. How many people get to say that?

It has never been just a job but an all-consuming interest. I have always cared deeply about the welfare of the hens and their chicks. At the busiest times, I would have been responsible for eighty thousand birds at any one time. I have also worked over the years with some brilliant people, many of whom have become lifelong friends. Poultry is a bit of a world within a world, as I realised when I saw so many old faces at the wonderful retirement party the Parker family very kindly put on for me and Margaret at The Plough (with the help of our good friend Jimmy Wooley who contacted everyone and arranged for them to assemble at 7pm sharp but without letting on to me



and Margaret!). It was almost overwhelming that so many of the people I had grown to trust and respect over the years had turned out to say goodbye and good luck. But the main thing was that we all knew each other. We all understood the day to day problems of raising chicks, keeping hens healthy and productive and the huge satisfaction of seeing all those eggs ready for market (I often wonder how many Full English Breakfasts have included our eggs, how many cakes have been baked with them, and how many people have dived into the fridge, desperate for a quick meal and found enough eggs for an omelette). But it is no secret that this industry has been constantly buffeted by social trends, the demand for cheap food, the EU, Brexit and briefly, Edwina Curry; by so many people so far removed from the reality of life in the countryside and with so little understanding of it. However, I know hand on heart, that there has never been a day when I have not put the welfare of the birds in my care front and centre.

I think living at the bottom of the drive, so near to the farm, has meant that family life and work have always gone hand in hand. Margaret and I have raised our two wonderful daughters and gone on to welcome our grandchildren to the home that has, thankfully, become so dear to us.

The memories I have of the last fifty years are happy ones. I look back with satisfaction knowing I have done my very best for people I have always been proud to work for and as I said earlier: How many people get to say that?



**As most people will be well aware by now, we opened The Stackyard Farm shop in late August. Ideally situated between Hickling and Kinoulton, we jumped at the chance of opening the shop when the building became available at Grove Farm.**

The Stackyard Farm Shop has been a dream of ours for sometime now, allowing us to sell home reared beef from our farm, Church Farm Hickling, local produce and everyday essentials. We stock a fabulous variety of fresh fruits and vegetables, local bakery bread, Manor farm dairy yoghurts, local meat, game and sweet treats. We have a small household section and some beautiful gifts too. We also have newspapers everyday, do let us know if you would like any magazines ordering for you.



Moving forward, we're now taking orders for our home reared beef boxes, local lamb boxes or fruit and vegetable boxes and can deliver locally for free. We also take orders for bespoke celebration cakes and hampers for gifts. Pop in for a chat and let us know what you'd like.

It's been an absolute pleasure seeing everyone visit the shop over the last few weeks, thank you for your continued support.

Emily, James and Harry





## GRANTHAM CANAL WATER RESTORATION GROUP

Working hard to maintain the water in our Canal.  
We have facilitated work on the canal to restore and maintain the water in this valuable amenity.



We very much feared that this year would see us losing water in the Hickling basin and Kinoulton running dry yet again. However, works that we have managed to get done are proving a success.

- Through negotiation GCS and CRT have repaired the serious leak at culvert 39 near Irish Jack's Bridge.
- There has been remedial action at culvert 42 near Devil's Elbow to reduce water leaks on this largely porous stretch of canal.
- The dredging of reeds to create a channel for water and wildlife in a long stretch of canal. This work, carried out by CRT, was funded by RBC from the UK Shared Prosperity Fund. Although naturally the reeds appear to be growing back the dredged channel remains and is effective in getting wildlife and water along the canal this is where we need volunteers to help maintain the channel of water.
- The clearance, by GCS of the Smite feeder, a vital but seasonal source of water and requiring constant monitoring and management.
- The rebuilding, by CRT of the Knipton feeder – our primary source of water – and the clearance of the 5km channel/tunnels bringing the water from the reservoir to the canal.

Much remains to be done, however, including three major pieces of work:

- The completion of the repair at culvert 42 and fixing the hole in the 200-year-old culvert. CRT have drawn up a plan that includes relining a 30-metre stretch of the canal at that point and, with our support, are currently seeking funding.
- There is a serious leak at culvert 12 by the Knipton feeder exit that means that, if switched on, most of the water from the feeder would be lost almost immediately. Plans coming together for a repair by GCS and CRT.
- There are dense areas of reed and weed downstream from the Knipton feeder which would reduce the amount of water flowing down to Hickling and beyond.
- A silt solution for the Smite feeder.

Meanwhile GCWRG is pulling together a local volunteer group equipped with a boat, tools and equipment for day-to-day maintenance on the Hickling/Kinoulton part of the canal. The objective is to keep the reeds at bay, clear any other obstructions and detritus and keep the local stretch neat, tidy and working as a canal. With local volunteer help other groups can be set up along the canal. Lady Bay already has a very active group.

Whilst GCWRG cannot control when and how work is done, we continue to work with our partners, GCS, CRT and councils, and press for action as soon as possible. We continue to raise funds so that we can contribute, lobby and raise awareness.

## COUNCILLORS NEWSLETTER AND UPDATE

Nevile & Langar Ward  
COLSTON BASSETT, HICKLING, UPPER BROUGHTON, HICKLING PASTURES,  
KINOULTON, LANGAR cum BARNSTONE.

This might be a brief newsletter – as I have been very tied up with Planning applications just recently not to mention the Scarecrow meetings in my home village of Hickling. However, first I must put in a plea for new Parish Councillors.

Some of the Parishes are running without the required number of Councillors and having to cancel meetings when not quorate. You **need** your Parish Council and they **need** you.



**"Your Parish  
Council Needs  
YOU"**

### REWARDS

We love our villages and want to see them well run and looked after so please, please, step forward and help. It can be a very rewarding role, especially when you see things being built or put in place that you have helped facilitate – like the new village hall at Barnstone, or a new bench or commemorative garden, complete with Coronation Plaques, as at Upper Broughton. Researching funding is obviously a rewarding task, getting someone to give your village money for a worthy project wow! ! For example, new play area, village lengthsmen, (see below) history group, web site or environmental project, traffic calming scheme or planting trees even an orchard, just use your imagination, anything is possible.

Come on – let's take pride in our villages

Please answer the call by ringing the local Parish Clerk or coming along to a meeting.



### Lengthsman scheme

Second - I want to encourage all the Parishes to take on a village lengthsman - free. He or she is like your old village school caretaker a Jack of all Trades and is paid for by the County Council. Lengthsmen help save the tax payer money by doing a job, such as cleaning a road sign which, if the County Council did it, would cost a lot of money and time by sending a couple of men out with a van having first obtained the necessary permits, putting the job on a rota sheet for a year next Christmas, by which time you will no longer see how far it is to the next village because of the dirt built up on the sign.

The lengthsman could do it next week for an hours pay from the County Council.

The Parish Council can negotiate the hours and the work required with the County Council

The lengthsman scheme is an arrangement between NCC and parish/town councils or community resource trusts. The parish councils employ a lengthsman. They carry out minor local highway's jobs identified by the parish council. We, NCC provide:

- an annual grant
- initial training



Tree Felling  
Lopping,  
Pruning,  
Ground  
Clearance,  
Tree Surgery,  
Fencing,  
Planting,  
Logs,  
Wood  
Chipping,  
Hedges  
Maintained.

Fully Insured

Tel. 01664-822471



**Keith Wadkin & Son**  
Tree Specialist  
Hickling  
Melton Mowbray, Leics.  
LE14 3AQ

Established 1959

- basic equipment.
- Jobs a lengthsmen can tackle include:
- grass cutting
- cutting back overhanging hedges
- ensuring visibility of traffic signs
- maintaining heritage and non-mains powered signs
- clearing drains
- clearing minor storm debris
- tidying roadsides
- digging out ditches in verges
- repainting traditional finger and mile posts
- reporting safety problems to us.

The scheme doesn't affect our legal responsibility to maintain roads and pavements. It provides an opportunity for local communities to identify minor works which would not necessarily get done by NCC unless there was a safety issue.

If you have any queries about the scheme, please contact the [Customer Service Centre](#).

### FREE TREES campaign

#### DON'T MISS OUT THIS YEAR

Once again Rushcliffe is distributing free trees to residents and Parishes to help combat climate change.

What you can do to keep Rushcliffe green

You can plant a tree on your own land

Over 10,000 trees have been distributed since the start of the campaign in 2018 and now a further 1,000 hazel, crab apple, wild cherry and rowan or mountain ash are available without charge for those who live in the Borough. <https://forms.office.com/e/MsaC26VESp>.

**PARISHES CAN PLANT FREE TREES** The Borough Council will provide free, up to 6 native trees per parish / community; a further 4 trees will be made available to Tree Wardens. Rushcliffe residents can apply for free trees now, for delivery in winter. You can always become a Tree Warden - talk to your [parish council](#). They

can have more than 1 warden. I am sure the more wardens in the Parish the better. You can also volunteer to look after a tree planted by the Parish Council. Some new trees have died through lack of water and attention, but one tree wouldn't take much time to nurture. Take a bottle of water with you to water your tree every time you walk past. We all need the trees to clean the air we breathe without them we too might die through lack of clean air, water and attention.



#### don't let it happen to our trees.

20,000 newly planted trees died last year in Gloucester through lack of water and attention. Don't let it happen in Rushcliffe.

### UKSPF & REPF Levelling up FUNDING Parish Councils and rural businesses should apply now.

It's now or never for this year.

There is still £55,000 to be allocated this year so get your applications in now. It's not an onerous task and there is helpful advice at the end of a phone from Rushcliffe.

They are targeting Rural projects and businesses so just what the Nevile & Langar Ward need. The Martin's Arms at Colston Bassett has already received some of this funding the Canal and Rivers Trust. Projects large and small from Parishes, Charities, those working from home, Churches are all considered.



### WELCOME BREAK ( a bit of a misnomer!)

I'm sad to report that the application for the Motor way style service station at Widmerpool Island, Hickling Pastures, was approved despite very strong opposition, lobbying, councillor intervention and presentations. A great shame when there are already sites operating within the vicinity that could cater for this apparent need without destroying virgin green field and damaging the environment. Thank you to everyone who took time to respond to the consultation and attend the Planning Committee meeting. Despite this result, your engagement does make a difference.

You have influenced decisions in the past and will again in the future.

If you have any planning queries please get in touch:

[Cllr.t.combellack@rushcliffe.gov.uk](mailto:Cllr.t.combellack@rushcliffe.gov.uk)



I can't go finish without saying what a brilliant Scarecrow event this year. So much effort went into this one. It was for such a worthy cause

### RAINBOW CHILDRENS HOSPICE

It was so well received we are still getting organisations asking us to accept further donations for the charity.

So, thank you to all the organisers and volunteers, cake makers, stall holders, traffic management team, entertainers, scarecrow makers, visitors and many more.

Hope to see you again next year.

If you have any queries, please contact me at Rushcliffe

[Cllr.t.combellack@rushcliffe.gov.uk](mailto:Cllr.t.combellack@rushcliffe.gov.uk)

Tina Combellack



## HANWELL WINE ESTATE

[www.hanwellwine.co.uk](http://www.hanwellwine.co.uk)

Award-winning English wine from  
Nottinghamshire family vineyards est.1975



- Vineyard Tour and Wine Tasting
- Tour and tasting gift packages from £25
- Celebrate: birthday, anniversary, wedding, hen-do
- Traditional method vegan English Sparkling Wine
- Still White, Rosé, Cherry & Mead
- **Open 11am-4pm Fri-Sun**
  - Café bar open until 30<sup>th</sup> September '23, reopens May '24
  - Wine shop open all year
  - DIY vineyard trail and wine tasting at your leisure, all year

Full details and bookings [www.hanwellwine.co.uk](http://www.hanwellwine.co.uk)

### Rural Antics Art, Craft and Skills Workshops

**Oct** Halloween felt pumpkin, Willow weaving, Gel plate printing, Glass painting, Spinning ring, Stacking ring, Pencil drawing, Watercolour Christmas cards, Spoon carving, Wool weaving

**Nov** Chocolate truffle making, Bentwood chair making, Christmas willow weaving, Felt baubles, Owl, Snowman or Santa wood carving, Photography, Silk painting, Bookbinding, Stained glass mosaic, Frosty the snowman, Quentin Blake style drawing....

**Dec** Wreath making, Christmas macrame, Felt mistletoe, Glass gift tags, Christmas centre piece, Smartphone photography, Marquetry pendants...



Hanwell Wine Estate, Hickling Pastures, South Notts, LE14 3QG

[hello@hanwellwine.co.uk](mailto:hello@hanwellwine.co.uk) Tel: 01949 81393



**YOUR PARISH COUNCIL NEEDS**

**YOU**

**Come and join our friendly and enthusiastic  
group of Parish Councillors**

**For a couple of hours of your time per month  
(and one meeting every 6 weeks) it's your chance  
to help keep our Parish the great place it is to live.**

**Contact Steve Green on 07843 683365**

Hickling & Hickling Pastures Parish Council  
2 Lindy Close, Kinoulton, Nottingham NG12 3RD



## Parish Council for Hickling & Hickling Pastures.

Summary of minutes from meeting held on 25<sup>th</sup> July and 9<sup>th</sup> September 2023.

Full Minutes are published on Parish Noticeboards and at <https://hicklingnotts.org/parish-council/>

### Raised by parishioners:

- Dates of meetings – parishioner requested clearer communication from the Parish Council when meetings were cancelled, postponed and/or rearranged. This had not happened when the earlier August meeting had been cancelled at short notice and rearranged for September. Cllrs agreed that meeting dates and any changes should be publicised at the very earliest opportunity on the Parish Council noticeboard and website in good time so that the public are fully informed.
- Priority 'Give Way' Bridegate Lane (speed reducing measure/change to road layout) – muted by Cllr Combella at the last meeting. Parishioner who resided on Bridegate Lane (Hickling) had mentioned this idea to neighbours after the last meeting and had had a positive response. Discussed by councillors and agreed that this sort of arrangement was out of keeping/not in character with the village/unwanted over-urbanisation.
- Collaborative meetings – parishioner wished to support the idea of collaborative meetings and the continuation of open discussions between councillors and the public. Councillors would look into the feasibility of longer open public sessions and/or collaborative agenda items, formally closed post-discussion to allow for councillors' official decision making.

### Administrative:

**(9<sup>th</sup> Sept) Election of Chair (rotating)** - Update from NALC regarding collaborative meetings, with reference to Legal Topic Note 5. Councillors discussed the advice received from NALC, as they wished to find a way in which the public could be involved in a collaborative manner during agenda item discussions. Agreed to put together proposals for future meetings which could be referred to NALC for legal comment. With regard to this meeting, Cllr Green asked that parishioners who wished to talk, add content or ask a question, once the open session was closed and the formal meeting opened, raise their hand and he would invite them to contribute.

### Planning:

**22/01989/FUL Venari Land Limited Erection of Roadside Service Area (RSA)**, including a single storey RSA building, four island petrol filling station forecourt and canopy, Electric Vehicle (EV) charging bays, HGV fuelling facilities, canopy and parking, a drive thru/coffee unit and associated development, including car parking, circulation space and new access from the A606, on-site and perimeter landscaping, drainage infrastructure including attenuation ponds and swales and boundary treatment: Land At Junction Of A606 Widmerpool And Fosse Way Hickling Pastures Nottinghamshire.

Revised documents issued 30/6/23 & consultation extended to 31/7/23

- Cllr Combella advised that the government plan requires a service station every 15 mins/20mins, the new documentation states that with this site it will increase the biodiversity (arguing after development it will be greater than the existing green field). The sewerage will be treated and then put into the Brook, the drainage water from the hard surfaces will also go into the Brook – so this increases the likelihood of flooding in Widmerpool, unfortunately, this would include fecal matter and oil wastage from the service area facilities. The field opposite A606 is a local wildlife site. The plans mention further development in the future. Stragglethorpe site is a brownfield site in green belt, allocated for logistics development, however, Welcome Break do not think that site is appropriate for development as an RSA.
- The concern is that the committee members (when it comes to appeal), will not be able to go through the huge amount of documentation on the planning portal.
- Cllr Rowe suggested that the planning committee are invited to see the site as soon as the date



of the meeting is announced, and to send the information to local neighbouring Parish Council – Kinoulton and Widmerpool.

- The Parish Council discussed the above and unanimously agreed to submit an objection on the same grounds as previously, Cllr. Rowe will look at the new documentation on the planning portal and supply the clerk with the information for her to submit.

**21/00190/HEDGE/PLANNING INSPECTORATE REFERENCE: APP/HGW/535: Remove hedgerow** to enable two long narrow fields to be managed as one. **Turnpike Lodge, Melton Road, Hickling Pastures**

- The Parish Council discussed the above and unanimously agreed to submit an objection on the same grounds as previously, Cllr. Rowe will supply the clerk with the information for her to submit to the planning inspectorate.

**23/01323/FUL Proposed two storey front and side extension (...) Quorn House Folly Hall Lane Hickling Pastures**

- The Parish Council discussed the above and unanimously agreed that they would not object to this application and no need to put any comment on the planning portal. Permission granted (Sept 5<sup>th</sup>).

**23/00595/FUL Erection of new two storey dwelling; Associated landscaping and access works. Willow House, Melton Road, Hickling Pastures,**

Decision: refuse planning permission

**23/01411/FUL Erection of detached timber frame garage building: Glebe Farm Cottage, Main Street, Hickling,**

Discussed by councillors and unanimously agreed to OBJECT, as follows:

- The proposed building's size and position would impact negatively on the street scene, being set forward of the main house and adjacent to the highway. Most other neighbouring properties, farms, buildings and the church are set back from the road.
- Councillors are particularly concerned about the harm caused to the setting of the Grade 1 listed St Luke's Church. From the south, the approach to St Luke's is currently enhanced by substantial trees. Planning permission has been granted to remove the largest of these trees. The prominence of this large mature lime tree is obvious in the picture on page 27 of the draft Hickling Conservation Area Appraisal.
- The massing of the proposed garage from the south would largely obscure the other remaining trees which would result in the street scene of trees within the curtilage of the church being replaced by a new dominant building.
- Furthermore, the proposed building being timber clad is not in keeping with the character of local buildings. The Hickling Neighbourhood Plan design guide and the Conservation Area Appraisal give details on the local vernacular and preferred style of construction and choice of materials.
- The Design and Access Statement lacks detail. For example, there is no information on materials for the bifold doors. The Parish Council does not think that bifold doors are a sympathetic choice and would prefer barn style timber doors.
- The Design and Access Statement claims that the building sits comfortably without looking cramped, and yet it sits as tight as possible to the northern boundary.
- Although the Design and Access Statement also claims that existing trees and hedges will not be affected, councillors are concerned about the impact to the root zone of the important remaining trees close to the boundary and close to the new building.
- Councillors would prefer to see a smaller garage or outbuilding located further away from the highway and for it to be subservient to the main house.
- The Parish Council do not believe that this proposal enhances or preserves the character of the Conservation Area and does cause significant harm.

### Ward Member report:

Cllr. Cottee:

- advised that the full council will be moving to Hucknall, as £53 million is needed to refurbish County Hall. Cost of new building (Hucknall) will be £18 million and additional £4 million for the council chamber. No plans for the existing council site, this might be a source of income going forward, expect the move to Hucknall in around 14 months. Trent Bridge House is rented so can use that building.
- the Widmerpool bypass will be re-surfaced end of Aug/early September, depending on the weather. Cllr. Cottee said that they will be putting down something that will last and will advise the clerk once dates are finalised.

Cllr. Combella:

- Would like the Parish Council to look at the re-launching of the Lengthsman Scheme and will advise the PC once information is available.
- The Power Station site will be developed for hi-tech jobs, business rates will be retained.
- UKSPF funding closed for this year and was unsurprisingly over-subscribed.
- UKSPF funding will reopen next year – the PC should consider future projects & apply accordingly.
- Advised by parishioners that there was a car accident at the bottom of Bridegate Lane, lamppost damaged, but the person drove off. She would suggest speed reduction on Bridegate Lane, for example priority way to slow traffic down.





- Asked if the PC had any volunteers for a Community Speed Watch. Cllr. Prosser advised that an advertisement had been put in The Hickling Standard and if anyone volunteers for this then the matter will go back on the agenda.

#### **Finance & Assets:**

##### **Assets of Community Value**

- The Parish Council have been advised by Rushcliffe Borough Council that the nomination for the Hickling Canal Basin, slipway and pedestrian area was supported at their meeting on 12th June and the asset of community value listing has been added to the published register: Rushcliffe - Assets of Community Value.
- RBC have since received correspondence from the current tenant querying whether his landlord had been copied into the original consultation letters as a small parcel of his land noted on title plan NT523015 is within the boundary area. The landowner may wish to request a review of the decision, but they would have to have strong evidence to challenge RBC's reasons for supporting the listing. Formal letters will be issued by RBC next week.
- Cllr. Prosser advised that the Plough Inn Asset of Community Value application / nomination was submitted to RBC for consideration on the 19th June. (Sept 5<sup>th</sup>) Consultation letters were being sent to relevant parties.

##### **Conservation Area Appraisal - Review**

- Cllr. Prosser and parishioner had again met with Andrew Langley, RBC, to continue the review process of the Conservation Area Appraisal - they are now collectively considering draft version 6. The Conservation Area Appraisal is a Rushcliffe led and owned document but Cllr. Prosser and parishioner were hopeful that the review document would be both thorough and robust.
- Rushcliffe Borough Council held a drop-in consultation event at the Plough Inn on Monday 4th September to give parishioners the opportunity to directly ask questions and comment on the draft Hickling Conservation Area appraisal – all residents had previously received notification of the review and an invitation to attend the event from Rushcliffe BC.
- Cllr Prosser explained that, since the publication of RBC's draft / consultation conservation area appraisal, she and Mrs. Jane Fraser, representative of the Hickling Local History Group, who had both been collaboratively involved in the review process, had considered the draft consultation document and felt compelled to produce a further, amended draft 8 which addressed their fundamental concerns with regard to the introduction of a new 'Farming Character (both operational and non-operational) Zone' and the removal of references to wildlife, biodiversity and tranquility in Zone 2, which deals with the Grantham Canal and the Hickling Canal Basin area, including the Wharf Building and Yard.
- Councillors considered and discussed both the Rushcliffe Borough Council consultation/ revised Hickling Conservation Area appraisal document and the amended 'draft 8' document. The Parish Council considered the alternative 'draft 8' document which incorporated the working farms section into the Main Street character Zone 3 – they preferred this approach as it brought the farming heritage of Hickling into the Main Street character zone and took account of how closely integrated the working farms were in this zone.
- The 'draft 8' document also reintroduced the wildlife, biodiversity and tranquillity references to Zone 2, which councillors also preferred. With specific regard to this zone, councillors were concerned that the Borough's draft gave extra prominence to the development / reopening of the canal as a navigable waterway while not reflecting the true character of the area as it is now.

**Co-opting of Parish Councillor(s):** No update - councillors were encouraged to continue to discuss the opportunity to join the Parish Council with parishioners.

**Noticeboard Relocation:** Noticeboard to be positioned by the A606 bus stop (northbound) in Hickling Pastures. RBC permit to be applied for - members of the Parish Council will need to sign application form. Awaiting final confirmation of cost for re-positioning or notice board. (Sept 5<sup>th</sup>) – permit received and councillors agreed to accept the tender and proceed without delay.

##### **Parish Cemetery:**

- Cllr Playle has advised the contractor regarding the size of the boulders required for the unconsecrated area of the cemetery, waiting for them to be positioned.
- The replacement (W1) Black Poplar tree has died, Cllr Prosser proposed that the surplus monies for the Platinum Jubilee were used to purchase a replacement tree (£110.12 surplus monies), seconded by Cllr. Rowe, and unanimously agreed. Naturescape advised no availability, although hybrid black poplars were available.
- Damage to a planter on a grave – Cllr Prosser advised that she had asked the Clerk to ascertain a cost to replace the damaged planter. Parishioner asked whether the cemetery terms and conditions allowed for planters to be positioned on the grass around the graves in the cemetery and, if not, suggested that the Parish Council should not be paying for a replacement. Ts&Cs to be confirmed.

**Walkers' Green:** Quote for the replacement cradle swing seat had been received in the amount of £187, for item to be supplied and installed was £671. Cllr Prosser had reviewed the ROSPA annual report, completed in May 2023 & Councillors agreed that there appeared to be no requirement from ROSPA for any immediate replacement – the cradle swing seat would be monitored on a

monthly basis when the Walkers' Green monthly inspection took place and any deterioration reported to councillors. Annual Risk Assessment (associated paper) completed by Cllr Prosser.

##### **National Effort to Protect Neighbourhood Development Plans (associated paper):**

Request received from a fellow Parish Council to support their campaign and send a letter to the Rushcliffe local MP in support of their national effort to protect Neighbourhood Development Plans with specific reference to a recent planning inspector's decision to allow a housing development in Staffordshire that is in direct contravention of their NDP (Chapel and Hill Chorlton, Maer and Aston and Whitmore NDP). Councillors agreed to a letter being drafted and sent to the Rushcliffe MP, Ruth Edwards.

**Path Clearance, side of Village Hall:** Two quotations had been received by the Clerk, for £75 and £175 respectively.

Councillors agreed that the tender be awarded to contractor who quoted £75.

**Lengthsman Scheme (associated paper):** The specifics of the Lengthsman Scheme were discussed in depth and it was agreed that the Parish Council had no capacity currently to administer the scheme efficiently.

##### **Environment:**

Parishioner has contacted the council with regards to a **tree at the top of Bridegate Lane** in Hickling Pastures that needs cutting back, as it is a struggle to see traffic coming from the right. Also, the **conifer hedge needs cutting back** between The Yews and Woodbine cottage, as it is forcing parishioners to walk in the road.

Cllr Rowe will look at the overhanging tree and Cllr. Playle will speak to owner of The Yews.

**Roadside verges:** Cllr. Playle asked if Cllr. Combella and Cllr. Cottee if they could help with regards to the wildflower area that should be along Bridegate Lane, he asked if she could talk to the relevant people at RBC/NCC, as he feels that he is getting nowhere with this matter. Cllr. Combella advised Cllr. Playle that he emails Cllr. Cottee and he will contact Laura Trussler.

**RBC Community Tree Scheme:** Cllr Playle is aware that the deadline is 30th September and will deal with the council's application by the deadline date.

**Footpath between Kinoulton and Hickling (Kinoulton Parish Council):** The Clerk had brought councillors' attention to an agenda item at the last Kinoulton Parish Council meeting, where discussion had taken place regarding the possibility of creating a pedestrian footpath between Kinoulton & Hickling. Councillors agreed that there was no action required at this stage as Kinoulton PC had agreed not to currently pursue.

##### **Highways & Street Furniture:**

**Heliport -** Cllr. Rowe wished to summarise the correspondence with Heliport, he has corresponded with RBC after the Heliport asked that all correspondence was done with RBC not Heliport. Cllr. Rowe re-confirmed that when any breaches are made by going off route, he supplies the date, time and area of the breach to RBC. Hickling Parish Council agreed that Cllr. Rowe should try and speak to RBC re this matter as it would probably be more productive than further detailed emails. Cllr. Prosser advised that when the Heliport started operating that the Air Ambulance was not stationed there, so should a change of use be granted by RBC, Cllr. Combella said she would raise this with RBC.

##### **Community Engagement:**

**D-DAY 80 – 6th June 2024 (associated paper):** Note date in the diary – the Prime Minister is encouraging communities to take part in celebrations by lighting a Beacon at 9.15pm on 6th June 2024, representing the 'light of peace' that emerged from the darkness of war, along with the International Tribute (to be read out as the Beacon is being lit last evening). Councillors agreed to promote and be involved in the D-Day 80 celebrations – details to be discussed and confirmed in early 2024.

**Website:** Cllr Green proposed that the new website be launched without further delay and that content would be added thereafter.

- Official email addresses to be established for all councillors for communication purposes.
- Official announcement to be posted on the 'old' website and the Parish Council's socials as soon as the new one is physically launched and to be advertised in the Hickling Standard.
- Parish community groups and parishioners wishing to add content should contact Cllrs Green and Lamb (as webmasters).
- All parish council archived data (minutes, agendas etc.) to be uploaded in due course.

##### **Correspondence:**

A member of the Scarecrow committee asked the PC if they could support the Scarecrow Weekend in the form of a raffle prize. It was agreed that 6 bottles of wine could be offered as a raffle prize (each councillor to personally donate a bottle) rather than using PC funds

**Finance and Account balances:** see full Minutes on Parish Noticeboards and online.

June 2023: Current Account. £15,695.23 and Reserve Account, £3,835.35

30<sup>th</sup> Aug 2023: Current Account £15,467.77 and Reserve Account £ 3,861.19

**Other items:** None.

**Date of next meetings (tbc):** 3rd October, 14th November, 19th December.





# YOUR PARISH COUNCIL

The Parish Council is the lowest tier of local government and is made up of representatives living within the local community who have an interest in community matters and who make decisions on behalf of the Parish.

**Your Parish Councillors are listed below with their positions of responsibility:**

**Tracey Prosser:** (Vice Chair) plus Finance & Administration & Assets portfolios - tjprosser67@gmail.com

**Steve Green:** Highways/Street Furniture portfolio, Grant Applications & Snow Warden - steve.j.green@gmail.com

**Chris Lamb:** Community Engagement portfolio - c.m.lamb@me.com

**Peter Playle:** Environment and Highways/Street Furniture portfolios plus Snow Warden - peterplayle@hotmail.co.uk

**Ivor Rowe:** Hickling Pastures, other roles tbc - ivor@rowepeople.net

**Vacancy: for two councillors**

**Your Parish Clerk is Julie Holland** and she can be contacted: by email - hicklingparishclerk@gmail.com and by phone – 01949 823902.

The Parish Council is here to help; however, many issues encountered in the Parish, do not fall under the jurisdiction of the Parish Council and you should contact the relevant authority in the first instance to assist you.

**PLEASE CONTACT NOTTS COUNTY COUNCIL:**  
[www.nottinghamshire.gov.uk](http://www.nottinghamshire.gov.uk) or call 0300 500 8080 - Monday to Friday 8am to 6pm for issues relating to:

Roads & pavements including obstructions and potholes/roadside verges/road gullies or drains/streetlight faults/trees on public land/bus services.

**PLEASE CONTACT RUSHCLIFFE BOROUGH COUNCIL:** [www.rushcliffe.gov.uk](http://www.rushcliffe.gov.uk) or call 0115 9819911 for issues relating to:

Planning  
Waste – including fly-tipping  
Electoral matters.  
Council Tax

If you have an issue and you are unsure of who can help, or a previously reported issue remains unresolved then contact the Parish Clerk; hicklingparishclerk@gmail.com

**If you wish to comment on a planning application:**

**You can comment online** by searching for 'Rushcliffe Planning' - go to 'simple search' type in 'Hickling' and scroll to find the application.

**Or you can write to:**

Planning & Development  
Rushcliffe Borough Council  
Rushcliffe Arena  
Rugby Road  
West Bridgford  
NOTTINGHAM  
NG2 7YG

Always remember to quote the planning reference.

**Please copy your comments to the Parish Council and Borough Councillor, Tina Combella so that we can take your views into account in our decisions.**

## Diary

|             |                                               |
|-------------|-----------------------------------------------|
| 26th Sept   | Film Club - VH 7.30pm                         |
| 1st Oct     | Village Hall Breakfast                        |
| 3rd Oct     | (tbc) Parish Council Meeting—Village Hall—7pm |
| 3rd Oct     | WI: Darts at The Plough                       |
| 19th Oct    | WI: Winter Warmers cookery demo               |
| 31st Oct    | Local History evening at The Plough 5pm-8pm   |
| 4th Nov     | Keyworth VH - Christmas Fair 10am-2pm         |
| 5th Nov     | Village Hall Breakfast                        |
| 7th Nov     | WI: Darts at The Plough                       |
| 11th Nov    | Dove Cottage Firewalk at Langar Airfield      |
| 14th Nov    | (tbc) Parish Council Meeting—Village Hall—7pm |
| 16th Nov    | WI: Making Christmas wreaths and decorations  |
| 3rd Dec     | Village Hall Breakfast                        |
| 14th Dec    | WI: Blood Bikers auction at Shoulers          |
| 19th Dec    | (tbc) Parish Council Meeting—Village Hall—7pm |
| 30th Jan    | Local History evening at The Plough 5pm-8pm   |
| 16th March  | WI: Spring Fayre, Kinoulton VH 10.30am-3.30pm |
| 18th April  | WI: Fashion Show Hickling VH                  |
| 30th April: | Local History evening at The Plough 5pm-8pm   |

**Every Thursday at 10.30am:** Coffee Morning in Church (please check venue during winter months  
Beaver Scouts 6-8 years, Tuesday 6.15-7.15pm; Cub Scouts 8-10.5 years, Monday 6.00-7.30pm;  
Scouts 10.5-14 years, Monday 7.30-9.00pm; Explorer Scouts 14-18 years, Tuesday 7.30-9.00pm  
All at Kinoulton Village Hall

Contact for ALL sections: Susanne Youngson 0788 413 6890 gskinoulton@gmail.com

~~~~~

Would you like to support the Hickling Standard with sponsorship?

Printing costs are an ongoing pressure for us but we are committed to delivering a free copy of the newsletter to every household in Hickling & Hickling Pastures.

We estimate that the costs are approx. £5 a year per household – great value for money!!

Please email a.terry125@btinternet.com if you are interested in making a small (or large!) contribution to our costs; payments can be made by bank transfer & we can include your name in a list of our supporters (or you can remain anonymous, if you prefer).

& thank you to those of you who already support us;

Hickling Parish Council Scarecrows Committee Samworth Foundation
Peter and Philippa Jacks. Adam and Donna Taylor Pauline Chell
Ann Blades (PeaPod Nursery) Mr & Mrs A Chambers Anonymous
Andy & Mairi Chapman Lisa & Paul Mills & all of our advertisers.

~~~~~



# Village Directory:

|                            |                                                         |                                              |                                    |
|----------------------------|---------------------------------------------------------|----------------------------------------------|------------------------------------|
| <b>150 Club</b>            | Philippa Jacks 822622                                   | <b>Kinoulton School PTF</b>                  | Sarah Parris 01949 823925          |
| <b>Beavers</b>             | Susanne Youngson 07884 136890                           | <b>Neighbourhood Watch</b>                   | Tracey Prosser                     |
| <b>Bellringers</b>         | Lynn Irving 07388 348341<br>lynn.irving74@gmail.com     | <b>Nottinghamshire Police</b>                | tjprosser67@gmail.com              |
| <b>British Legion</b>      | Colin Henson 01949 81453                                | <b>Control Room; non-emergency number</b>    | 101                                |
| <b>Councillors</b>         | John Cottee (County)<br>cllr.john.cottee@nottscc.gov.uk | <b>Parish Council: Clerk—Julie Holland</b>   | 01949 823902                       |
|                            | Tina Combella (Borough)<br>TCombella@rushcliffe.gov.uk  | <b>e.mail: hicklingparishclerk@gmail.com</b> |                                    |
| <b>Cubs</b>                | Susanne Youngson 07884 136890                           | <b>Parochial Church Council</b>              |                                    |
| <b>Film Soceity</b>        | Tim McEwen 822834                                       | <b>Priest in Charge</b>                      | Revd Paul Massey                   |
| <b>Gardening Club</b>      | Mr B. Baxter 01949 81374                                | <b>Email: 1revdpaul@gmail.com</b>            | Tel: 01159 892223                  |
| <b>Good Neighbours</b>     | Mrs B. Grundy 01949 81442                               | <b>Churchwarden</b>                          |                                    |
| <b>Scheme</b>              | Liz Year 822562 or 07805 407229                         | <b>Treasurer</b>                             | Alex Thomas 823420                 |
| <b>Guides</b>              | Alison Popplewell 01949 81604                           | <b>Secretary</b>                             |                                    |
| <b>Hickling Pre-School</b> | Nick 07950 558608                                       | <b>Scarecrow Committee</b>                   |                                    |
| <b>Hickling Standard</b>   | see previous page                                       | <b>Karen Buckley (Chair)</b>                 | 07729 768366                       |
| <b>History Group</b>       | Carol Beadle 822195                                     | <b>Sally Jenkins (Secretary)</b>             | 07971 520711                       |
|                            | Pauline Chell (fundraising) 822835                      | <b>Scouts</b>                                | Susanne Youngson 07884 136890      |
|                            | Jane Fraser 822845                                      | <b>Table Tennis: Alison</b>                  | 01664 822761 & Dave 01664 820262   |
|                            | Gill Bloor 822682                                       | <b>Vale Beaders</b>                          | Elizabeth Evans 01949 81501        |
|                            | Mr Simon Paramore (head)<br>01949 81203                 | <b>Village Hall</b>                          | Barbara McEwen (Chair) 822834      |
| <b>Kinoulton School</b>    | office@kinoulton.notts.sch.uk                           |                                              | Tim McEwen (sec.) 822834           |
|                            |                                                         | <b>Village Choir</b>                         | John Robinson (treas.) 822762      |
|                            |                                                         |                                              | Phillipa Jacks (bookings) 823622   |
|                            |                                                         |                                              | Lynn Irving 07388 348341           |
|                            |                                                         |                                              | lynn.irving74@gmail.com            |
|                            |                                                         | <b>Women's Institute</b>                     | Lynne Spencer (Secr.) 01159431008  |
|                            |                                                         |                                              | Carol Beadle (Treas) 01664 822195  |
|                            |                                                         |                                              | Pauline Chell (Trips) 01664 822835 |

## Hickling Village Newsletter - Committee

Chair; Tim McEwen - tel. 822834 or [tmcewen@globalnet.co.uk](mailto:tmcewen@globalnet.co.uk)

Treasurer/Advertising;

Andrew Terry - tel. 822088 or [a.terry125@btinternet.com](mailto:a.terry125@btinternet.com)

Jane Fraser - tel. 822845 or [frasermjlk@outlook.com](mailto:frasermjlk@outlook.com)

Barbara McEwen - tel. 822834 or [barbara.mcewen01@gmail.com](mailto:barbara.mcewen01@gmail.com)

Please get in touch with any of us if you have any comments or suggestions; we would welcome any contributions for future issues - articles, opinions, reports, recipes, poems, brain-teasers - whatever you would like to see in print!

### 2023 Copy Dates;

Dec/Jan 15.11.23

Feb/March 15/1/24

Copy must be received before these dates to guarantee its appearance. Please note that the committee reserve the right to edit or omit any material submitted. Opinions expressed in published articles remain the responsibility of the author. Articles may be published anonymously but the committee does need to have details of authorship before publication. For details of our privacy policy, please ask any member of the committee.

**COPY IN ANY FORM IS ALWAYS GRATEFULLY RECEIVED**

**e-mail address - [frasermjlk@outlook.com](mailto:frasermjlk@outlook.com)**

**Advertising Rates** (one advert for one year - 6 issues.)

Front inside cover - £65

Back cover - £80

Quarter page - £30

Half page - £45

Full page - £60

(enclose payment with copy for the advert and give to a committee member before the copy date.)

Charity, Village Events and Personal (wanted/for sale) adverts are FREE.

**We are very grateful to everyone who supports the village through placing adverts in the newsletter - you make all the difference!**

### Hickling Standard - online edition

The Hickling Standard is also available as a pdf (pages now in the right order!) at:  
[www.hicklingnottslocalhistory.com/hickling-standard/](http://www.hicklingnottslocalhistory.com/hickling-standard/)

~~~~~

The Hickling Standard is printed by Adlards, The Old School, The Green, Ruddington: 0115 921 4863