



WE WANT



YOU!

DO YOU HAVE A HOBBIE OR INTEREST THAT YOU
WOULD LIKE TO SHARE WITH LIKE MINDED PEOPLE?
WHY NOT HOST A GROUP AT THE PLOUGH INN?
LET US HELP PROMOTE AND ORGANISE ATTENDEES.

ASK CHRIS OR KIRSTY ABOUT HOW YOU CAN GET
INVOLVED, POP IN, OR CALL 822225

The

Hickling Standard

Village Newsletter for
Hickling and
Hickling Pastures

Issue 149

Aug/Sept 2023





"Nurturing the seeds of learning"



Pea Pod Day Nursery is an OUTSTANDING Ofsted rated day nursery, set in the grounds of a small holding on the A606 Melton to Nottingham Road.

Pea pod provides the highest standards of care for babies and children from 6 weeks to 5 years old. Open 7.30am- 6pm, 51 weeks of the year. We have facilities for 29 children, split into three age groups, with each room designed and equipped with that particular age group in mind. Our extensive outdoor provision includes a large secure garden, 2 forest school sites and our own mini farm where the children can play, interact and help to care for the animals!



Where to find us:

Pea Pod Day Nursery
Melton Road
Hickling Pastures
Melton Mowbray
LE14 3QG

Tel: 07577209625

louise@peapod-daynursery.co.uk

HICKLING SCARECROWS



'OCCUPATIONS'

SEPTEMBER 9TH/10TH 10am-4pm

Stalls, Fairground, Street Theatre, Morris & Clog Dancers,
Magician, Punch & Judy, Music, Archery, Refreshments,
Raffle, Competition

**If you would like to have a stall or can help in any way –
baking, teas, car parks etc. please contact:**

Karen Buckley 07729 768366 Lynn Irving 07388 348341

Sally Jenkins 07971 520711 Barbara McEwen 07983 657637

**Join the fun and make a scarecrow! Register your idea with
Margaret 01664 822319 for the competition**



DOVE COTTAGE DAY HOSPICE
CHARITY SHOPS & TEA ROOM
VOLUNTEERS NEEDED!
FLEXIBLE HOURS, FULL TRAINING GIVEN



WHERE LIFE MATTERS



Join a friendly team, meet new people and make a positive difference to a local charity.

www.dovecottage.org/volunteering
email admin@dovecottage.org
or call 01949 860303

Fashion Show

Friday, 29th September: Waltham on the Wolds Village Hall, 19 Goadby Road, Waltham on the Wolds, LE14 4AG

Fancy a fun evening out with friends, whilst picking up some nice clothes? We've partnered with a professional Fashion Show company to bring the catwalk to the Vale of Belvoir! There'll be a range of clothes to suit all age groups and sizes, and for all occasions. We'll have major high street brands, such as Next, Phase Eight and Monsoon, plus clothes from Italian and French boutiques, at a fraction of the normal sales price. There'll also be fizz and nibbles to make it a great lady's night out!

Firewalk

Saturday, 11th November: Langar Airfield, Harby Road, Langar, Nottingham, NG13 9HY. We are holding a very exciting event for 2023. Dove Cottage will run its very own Firewalk at Langar Airfield.

Following in the (very hot!) footsteps of several celebrities who've taken on this unique challenge, thrill-seekers looking for a new adrenalin boost will love it!

But firewalking isn't just about the physical act of walking on a lane of hot coals – it's whether you've got the mental strength needed to push yourself, and the euphoria that comes with the achievement.

Participation in the event will include a motivational seminar which will equip you with all the mental and physical preparation needed to complete the challenge.

Have you got what it takes...?

Email fundraising@dovecottage.org to register your interest and you'll be the first to receive information on how to book. Due to the nature of the event, places will be limited.



Hickling Scarecrows 2023

A little reminder that if you have any unwanted presents or bottles, please take them to Margaret Woolley, The Old Post Office, for the Bottle Stall and Tombola (please check dates).

Occupations Ideas

Tinker, tailor, soldier, sailor	Rock star	Pheasant plucker's son	RAF	The Three Wise Men
Rich man, poor man, beggar man, thief	X factor judge	Tom Tom the piper's son	Shepherd	Toastmaster
The butcher, the baker, the candlestick maker	Angel	The Pub Landlord	Chorister	Cowboy
Bishop	God	Golf	Jeweller	Dictator
Pope	Builder	Tennis player	Cherleader	Chaufeur
Priest	Plumber	Ball dancer	Undertaker	Blacksmith
Nun	Bob the Builder	Miner	Electrician	Miller
Monk	The Fat Controller	Striking miners	Inventor	Archeologist
King	Pilot	Traffic warden	Merchant	Auctioneer
Judge	Chimney sweep	Racing car driver	Policeman	Fireman
Queen	Bea keeper	Tattoo artist	Lord Protector (Cromwell)	Indian chief
Cavalry	Scott - explorer	Newsreader	Removals man	Weaver
Nurse	Einstein - scientist	Army	Whipping boy	Bodyguard
Dentist	Estate agent	Navy	Criminal	Banker
Vet	Car salesman	Marine	Scribe	Clerk
Paramedic	Post	The Three Wise Men	Are you being served-	Hi De Hi - Yellow Coat
Pirate	The Office	Shepherd	Secretary	
Zookeeper	Postman	Chorister		
Farmer	Paper boy/girl	Cowboy		
Jockey	Mads a milking	Jeweller		
Librarian	Strictly come dancing pro	Dictator		
Radio operator	Hairstylist	Cherleader		
Admiral Nelson	Artist	Chaufeur		
General Washington	Sculptor	Undertaker		
President of the USA	Renaissance man	Blacksmith		
Prime minister	Greek philosopher	Electrician		
Speaker	Bullfighter	Miller		
Beefeater	Bearded lady	Inventor		
Fisherman	Conductor	Archeologist		
Joiner	Manicurist	Merchant		
Toy maker	Watchmaker	Auctioneer		
Cobbler	Captain Kirk	Policeman		
Optician	Dr Spock	Fireman		
Pharmacist	Lady in waiting	Lord Protector (Cromwell)		
Teacher	Boy band	Indian chief		
Weatherman	Soap star	Removals man		
Gardener	Freedom fighter (eg Ghandi)	Weaver		
Author	Matt le Tiss	Whipping boy		
Waiter	Cleaner	Bodyguard		
Fitness instructor	Downton Abbey downstairs	Criminal		
Olympic rower	Butler	Banker		
Referee	Duchess	Clerk		
Umpire	Gamekeeper	Are you being served-		
		Hi De Hi - Yellow Coat		

Hickling Scarecrows 2023



Wingman
Flying dodo
Mountain rescue
St Bernard
Cheesemaker
Engineer - Brunel
Stephenson
The Oldest Profession
John the Baptist
Pied Piper
Mime artist
Arc builder
Bookie
Poacher

Barrow boy
Town crier
Caesar
Page boy
Jester
Paparazzi
Croupier
Easter bunny
Tooth fairy
Pony express
Snake oil salesman
Magician
Beautiful assistant
Witch Doctor
Shaman
Mystic Meg
Cabin boy
Poppy the Sailorman
Captain Pugwash
Roger the Cabin Boy
Biggles - pilot
Dambusters
The Few
4 Horsemen of the Apocalypse
Reverend Green
Professor Plum
Sheepdog
Guide dog
Sniffer dog
Cart horse
Mahout
Time Lord
Israeli (Palestine)
German (France)
Napoleonic (Spain)
Deep sea diver
Red Devil
Stunt man
Executioner
Goat herder
Bingo caller
Slave
Gladiator
Archaeologist
On the Buses
Steeplejack
Sumo wrestler
TV gardener
Porter
Scrap merchant
Steeple & son
Surveyor
Newsreader
Rabbi
Piemaker
Air traffic control

Receptionist
Mary Poppins Nanny
Wind cleaner
Road sweeper
Leetle
Doorman
Pharaoh
Boxer
Stonemason
Yoga instructor
Mechanic
Brewer
Faulty Towers - hotel
Knight (Monty python?)
Messiah
Circus ringmaster
Clown
Trapeze artist
Bareback rider
Carriage driver
Highwayman
Superhero
Santa
Checkout person
Shopkeeper
Acupuncture
Masseur
Pole dancer
Cocktail bartender
Little Matchgirl
Chief cook and bottle washer
Mayor
Barrister
Barista
Florist
London Cabbie
Ship's captain
Captain birdseye
Naturalist (Bellamy)
spy
Assassin
Samurai
Geisha
Astronaut
Supermodel
Market stallholder
Polo player
Genie
Arkwright 4 candles
Commentator
Cameraman
Fairy godmother
Witch
Disc jockey
Mountaineer
Percy parkkeeper
Sherlock Holmes

Maps and Aerial Photographs

Sometimes looking at something from a slightly different perspective makes all the difference; maps and aerial photographs certainly fall into this category.

The Hickling Local History Group have a range of maps and aerial photographs to view on our website: www.hicklingnottsllocalhistory.com/maps-of-hickling/ www.hicklingnottsllocalhistory.com/aerial-photographs/

Historic England: RAF/Ordnance Survey – aerial photographs (1947)

The photographs that are available in this collection for Hickling date from 1947. It seems that there are several series of photographs for our area but these are the only Winter images – without leaves on the trees, much more is visible.

We do have good quality scans of these images available to view but some highlights include:

- The ridge and furrow field patterns.



Home Farm is in the centre of the image with Beech House next door. To the right of the image is the old School House and part of the Chapel.



- The tree shadows are clearly visible; they seem to indicate the photographs were taken at about 10 o'clock in the morning.
- Long Lane is visible moving west from the southern end of Hickling village. Long Lane is an ancient route which originally extended along the top of the Standard, along the line of Folly Hall Lane towards Willoughby and the Roman settlement of Vernometum. The shades of this route and of the Roman settlement (in the fields close to the Willoughby Hotel on the A46) can still be seen on these photographs.
- The A46 can be seen in its relatively insignificant 1940s form.
- Odd black blotches are clouds between the plane and the ground.

The best way to view these images is using a Sterioscope.

The photographs were deliberately taken with an overlap. The Sterioscope uses mirrors to bring overlapping images together and appear in 3-D.

University of Cambridge: Britain from the air – 1945-2009

"For decades, former RAF pilots – some decorated war heroes – took to the skies of Britain at the instruction of legendary Cambridge archaeologist JK St Joseph in a unique project to map the changing face of the UK via the university's remarkable Committee for Aerial Photography. The photographs, covering almost every corner of the UK, bring back to life a disappeared Britain and capture the loss of our industrial heritage, the destruction of ridge and furrow landscapes unchanged for centuries, and the emergence of motorways, skyscrapers and modern cityscapes. The earliest photographs, numbering in the hundreds, date back to 1945 – but the project took off in earnest in 1947 when, over the course of the year, more than 2,000 aerial images were captured. The Committee continued to borrow RAF planes and pilots until the University bought its own Cessna Skymaster in 1965."



Squirrel Stores

The biggest "little" shop in the Vale of Belvoir



Delivery service now available
on orders over £20

(excluding cigarettes and tobacco)

Contact us on 822315 or call in
to the shop for more details.

- Greetings cards
- Artisan jams, chutneys, honey etc
- Newspapers and magazines
- Wines, beers, local ales and ciders
- Freshly baked Hambleton bread and produce delivered daily
- Selection of butcher's meat produce and Melton Mowbray pork pies
- Local cheeses
- Large variety of fresh fruit and vegetables (personal weekly fruit delivery and veg boxes available)
- Dry cleaning service
- Refill station
- Fresh sandwiches, sausage rolls, samosas etc

Opening hours:

Monday to Saturday 7am to 7pm

Sunday and Bank Holidays 8am to 1pm

01664 822315

The Sands, Long Clawson

Local History Talk Fields in the Landscape

By Emily Gillott

(Notts County Council Archaeologist)

~~~

Hickling Village Hall

September 22nd 7.30pm

~~~

"The talk will be about how clues to the past are hiding in plain sight, and in the most seemingly mundane things, all around us. We'll take a look at how the shape and layout of fields can help us look into the past using maps, aerial photos, and Lidar, all from the cosy comfort of your armchair and laptop. It might also help you see the landscape in a



different light when you're out and about too!"

~~~

Tickets £5

Including tea and biscuits

~ purchase on the door or in advance from

Pauline Chell (01664 822835)



Local History Group

**Hickling**

Nottinghamshire

[www.hicklingnottslocalhistory.com](http://www.hicklingnottslocalhistory.com)







Local History Group  
**Hickling**  
Nottinghamshire

[www.hicklingnottslocalhistory.com](http://www.hicklingnottslocalhistory.com)



## Are You Interested in Local History?

~~~

Research
Transcribing
Recording memories
Events

~~~

Old photographs  
House Deeds  
Family records  
Businesses/Clubs/Societies

~~~

We are looking for all kinds
of involvement.

Please contact us:

if you would like to be involved
in the local history group **or**
if you have any projects that
you would like to work on **or**
if you have material that we
could add to our collections.

~~~

[info@hicklingnottslocalhistory.com](mailto:info@hicklingnottslocalhistory.com)

Facebook

Speak to: Carol Beadle, Gill Bloor,  
Pauline Chell, Jane Fraser.

## Messages

Please contact us with your  
**messages** - we look forward to  
hearing from you.



No welcome messages for this issue: but if you have recently moved  
in to Hickling or Hickling Pastures and we haven't said, 'Hello!', we hope that you are  
enjoying living in the village and your new neighbours look forward to meeting you.

~~~~~



Many Congratulations to David and Sarah Bloor
who were married in Hickling in July - your
friends and neighbours in Hickling wish you
every happiness for your married life together.

Many Congratulations to Tony and Deon who
were recently married in West Bridgford - your
friends and neighbours in Hickling wish you
every happiness for your married life together.

We're Looking for a New Editor!!

After stepping in temporarily following Maggy's retirement from editing the
Hickling Standard, we are now looking for a volunteer to continue the good
work; please contact Jane at frasermjlk@outlook.com

- The newsletter is collated on Microsoft Publisher
- Help & support will be given by the team
- Involves 8-10 hours every two months (6 issues per year)

Historic Lincoln

September 14th 2023 - A

Trip from Hickling

Booking & Enquiries - Pauline Chell

01664 822835

(in aid of the Hickling Local History Group)





📍 The Basin, Main St, Hickling
Melton Mowbray, LE14 3AH

☎ 01664 820448

✉ relax@theoldwharf.co.uk

🖱 www.theoldwharf.co.uk

Time to relax and unwind

TEAROOM OPEN SEVEN DAYS A WEEK FROM 9.00 AM - 4.00PM

Please note the kitchen closes at 3.15pm and last drinks orders are at 3.45pm



 Find us on Facebook

Plough Inn Wins Top Award

Hickling's Plough Inn has been named as CAMRA Vale of Belvoir Pub of the Year, beating off strong opposition from a number of other great pubs throughout the Vale.

Landlords Chris & Kirsty were presented with the award by CAMRA (Campaign for Real Ale) Vale of Belvoir branch Chairperson Eddie Fennell on Saturday 25th June.

Eddie said "Since Chris, Kirsty and team have arrived the pub has really picked up. They do a decent range of beers (cask and craft) in good condition, have had excellent Beer Festivals, the service is always friendly. Food is very good too. Overall a good all round pub that promotes real ale in a nice rural setting".

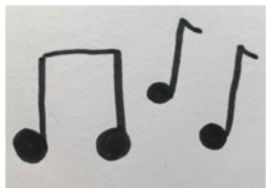
Chris and Kirsty bravely took over the pub during the first COVID 19 lockdown period of 2020, enduring difficult trading conditions whilst supporting the village by setting up a shop to provide food during those trying times.

After being flooded out in January 2021, a full renovation of the pub ensued giving a fresh new look to the 18th Century property. Hopefully you will have sampled some of the many Real and Craft ales, available alongside the many other drinks on offer.

A 'pub that does food' is a good description of our village local, so please use it or we'll lose it.

Well done to the Plough Inn team!





Music



Sign



Storytime

A fun music and story group for babies and preschoolers supported by Makaton signing.

Mondays 10-11am during term time

St Luke's church, Kinoultun.

£3 per family group per session.

for more information send Cate a message at musicsignstorytime@gmail.com or 07886169691



We've had a busy summer term at preschool; the children have done lots of baking and "making potions" from the things we've grown in our outdoor kitchen. When the weather has been kind we've spent lots of time enjoying the outdoors doing waterplay and learning about life under the sea. We've done lots of crafts and you can see them for yourselves at the Kinoultun Village Show in September including our painted stone animals and our recycled bottle top art

Our eldest children have been for taster sessions at their primary schools to prepare them for reception class in September. We will miss our leavers and wish them good luck for their new adventures. The leavers are sad to be moving on and had a few things to say about Hickling preschool....Archie says "I love preschool, I like making stuff and playing with my friends". Dexter says "it's so fun" and Oscar "Loves the baking days and eating what they have made". Jess said "I love preschool, I'll miss Carol, Hayley, Davinder and Elker so much".

We'd like to thank the Staff, Committee, parents and children for their hard work and support over the last year. We are located in Hickling village hall Monday – Friday 9.15am-3.15pm during term time, you can visit our website hicklingpreschool.co.uk or follow us on Facebook for more information on how to get involved or how to register your child.

Table Tennis at the Village Hall!

Monday nights 8 – 10pm

It's been a great season for Village Table Tennis. There have been lots of new friendly faces and so much enthusiasm that we extended our season beyond the Easter break for the first time. Our ethos of 'simply social' is at the heart of our sessions which offer a friendly knock about or a more intensive game and, of course, the chance to socialise.

We'll be taking a break for the summer and will return to the Village Hall on Monday 11 September at 8pm.

For more information call Alison 822761, or Dave 820262.

- Whether your preference is to have a friendly knock-about, or to seek the challenge of an intensive game, our flexible sessions are perfect for you
- Our season runs through the winter from late September to Easter, with a festive break
- Cosy village hall venue with superb facilities and tables for full match play standard
- Comprehensive set up to and quality equipment provided according to ability
- Enjoyable all round exercise in an exceptionally friendly environment, whatever your experience and ability
- Tea and biscuits included, providing an opportunity to relax and socialise

SIMPLY CALL 01664 822761 or 01664 820262
FOR AN INFORMATIVE CHAT

Try our outdoor table at the Wharf in Hickling.
Bats and balls available from The Old Wharf Tearooms



Freeview
EST 1982

HEWITT'S AERIALS

HUSBAND & WIFE TEAM
DIGITAL TV AERIALS FITTED & REPAIRED • FREESAT EX-POINTS • TUNING SETUPS • DIAGNOSTICS
FREE QUOTES • ALL AREAS OAPs DISCOUNTS

CONTACT MANDY OR DAVID

07554 387206
01664 820430

Corner Cottage, Clawson Lane, Hickling LE14 3AB

Hickling Village Hall
Strictly Why Not Dance?
At Hickling Village Hall
Main Street, Hickling, LE14 3AQ
Thursdays - 4pm to 6 ish.

Ballroom, Latin. An hour with instructor and time to practice afterwards.
£15 per couple - come and try some new moves.

Exercise the mind and the body and reward yourself with a cup of tea and some homemade cake.

Couples only at the moment.
No Booking required.



Local History Group

Email contact list:
general news and updates about projects that we are working on.
To join the mailing list, please send your name and details to us at:
info@hicklingnottlocalhistory.com

Quarterly Gatherings at the Plough Inn.
Dates for your diary—please look out for the posters for more detail: drop in, bring things, talk about all-things-Hickling!



Tuesday 31st October 2023 5pm-8pm
Tuesday 30th January 2024 5pm-8pm
Tuesday 30th April 2024 5pm-8pm



Hickling Local History Group

Information Boards Project

Views of Hickling—notecards
FOR SALE
~ 2 Designs ~ £4 per pack ~ Packs of 8 ~
Available from Pauline Chell 01664 822835

Headmaster's log book: 1876-1897

(one of our volunteers is currently transcribing the logbook which is full of the most fascinating snapshots of village life—in the meantime, a short extract)

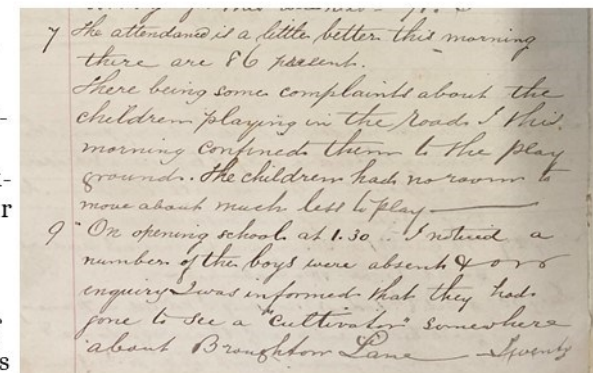
Aug 3rd 1878. The attendance this week has been very poor nearly one half of the children being absent during the week. Several of the infants have whooping cough. Haymaking is in some way or other keeping the elder ones at home. The bye laws will have to be more strictly enforced as the success of the school mainly depends upon regular attendance.

Average for this week is 71.6.

Aug 7th. The attendance is a little better this morning there are 86 present. There being some complaints about the children playing in the road I this morning confined them to the play ground. The children had no room to move about much less to play.

Aug 9th. On opening school at 1.30 I noticed a number of the boys were absent and on enquiry I was informed that they had gone to see a cultivator somewhere about Broughton Lane. Twenty children who have gone to look at the cultivator have just (1.55) returned to school.

Aug 10th. Received from Mr Featherstone the sum of 11/10 being the arrears of school fees received by him from Mr Job Marsden & Mr Allen.



Hickling W.I.

Have you ever thought of joining Hickling W.I.? As a friendly and active group we meet at Hickling Village Hall every 3rd Thursday in the month & we're always looking for new members.

We arrange trips/visits in between our monthly meetings so why not pop along to a meeting or Pauline Chell 01664 822835 for further information.

By the way we don't sing Jerusalem or make jam.

Hopefully see you soon

From the Hickling W.I. committee



NEWS FROM HICKLING W.I.



(whose members are not only from Hickling, but Kinoulton, Keyworth, Upper Broughton, Nether Broughton etc.)

Hickling WI have joined forces with the Melton Auctioneers – SHOULER & SON to raise money for the charity BLOOD BIKERS. Blood Bikers started in 2014 and since that time have completed over 43,000 missions. They deliver blood, baby milk, organs and other items needed urgently by the NHS. This charity has no paid employees and everyone in the organisation gives their time voluntarily. All money donated to them is used for fuel and other essentials to enable them to do their valuable work.

During 2023, the Hickling WI have been looking at ways to raise money for this charity. They have linked with Shouler & Son County Auction Rooms to do a Bargain Hunt Antique & Collectable Challenge. The members have been divided into teams with cash to spend hunting for a bargain which will then be auctioned by Shouler & Son. All money raised will go directly to Blood Bikers.

Shouler & Son have been selling antiques, household furniture and sundry effects in their auction rooms at Melton Mowbray for over 100 years. Located in one of Leicestershire's premier auction houses, with plenty of parking available on site and close by, Shouler & Son offer both the buyer and seller excellent facilities.

If you feel you can help the WI find a 'bargain' in their quest to locate items for the auction, please contact any Hickling WI member or telephone Pauline 01664 822835

All the items will be auctioned by Shouler & Son, County Chambers, Kings Road, Melton Mowbray, LE13 1QF on Thursday 14 December 2023 at 10am. Viewing will take place on Tuesday 12 December from 2pm until 7pm and from 9am on the morning of the sale. Please come along and support this fund raising initiative or bid online for our items.

HICKLING RESIDENTS WHO MADE A DIFFERENCE

(a series by Carol Beadle)

Mrs Muriel Simpson (nee Buckley)

MURIEL BUCKLEY was born on 29th September 1934 at the family farm in Radcliffe-on-Trent, Nottinghamshire. She was born into a farming family and this was very much in her blood throughout her life. She was the eldest of 3 daughters, with younger sisters, Margaret and Rosemary.

In March 1949, the family moved into Malthouse Farm on Main St, Hickling, which is still a farm today run by the Collishaw family. As the family had no sons, it was Muriel who had to help her father as soon as she was old enough.

In 1951, Muriel's father died suddenly. Muriel who was only 16yrs old had to take on the running of the Dairy Farm with her mother. Her younger sisters also helped when they were old enough but it was Muriel who stepped up to take her father's place. The local farmers rallied round at this time to help the Buckley family wherever they could. Through sheer hard work and determination, Muriel became a very successful dairy farmer and was a shareholder in Long Clawson Dairy. Muriel's dairy herd consisted of over 70 cows, all of which were given names by her. Muriel milked British Friesians which are black and white.

During her long and very full life, Muriel was involved in all activities and clubs in the village and was at the forefront when it came to organising events and fundraising activities.

PARISH COUNCIL – She was a member of the Parish Council for many years and her contributions always valued.

ST LUKE'S PARACHIAL CHURCH COUNCIL – Muriel served the Church for many years on the Council and her fund-raising ideas helped support the upkeep of the village church. It is partly thanks to Muriel's efforts that the church building did not deteriorate and has some modern facilities.

THE DRAMA GROUP – During the 1950's and 1960's there was an active drama group in Hickling of which Muriel was a member. They would meet and rehearse to put on performances for the villagers. They often met at Malthouse Farm to rehearse and a member from that time said sometimes no one could say their lines for laughter.

WRVS – Muriel was never afraid of jumping behind a wheel and driving and for a time she delivered Meals on Wheels to local villages in the Vale of Belvoir.

The Collishaws recall – Muriel was known locally for always wearing gloves when driving to protect her hands especially when driving a tractor.

THE HICKLING WOMEN'S INSTITUTE – Muriel joined this shortly after moving to Hickling. During the 60+ years when she was a member, she held every possible position. It was always to Muriel everyone turned to for help and advice.

Carol Beadle recalls – As a relative newcomer to the WI, I was given the role of programme organiser, a position previously held by Muriel. A hard act to follow and I was delighted to report to Muriel my success in booking my first speaker. In Muriel's typical straight speaking manner she said 'that is all very well but have you a backup plan if the speaker lets you down at the last minute?' I have to admit that Muriel was correct in her advice as the speaker did let me down!!

MELTON WI COUNTRY MARKET – Muriel became a well-known member of this and would take her plants, preserves and baking for sale at the markets.

Carol Beadle recalls – often when I popped in to see Muriel, there would be a preserving pan on the stove bubbling away making some of Muriel's lovely jam

ANIMALS – Muriel was fond of animals. She owned and bred King Charles Cavalier spaniels which gave her great pleasure.

GARDENING – Muriel always had a passion for gardening. She enjoyed growing sweet



LADY FRIDAY Are you short of TIME?

I could support you when you're working or on holiday

PETS
Regular or occasional dog walking & pet care at your home

CHILDREN & ELDERLY RELATIVES
Meet children from school or take them to their recreational activities*
Accompany elderly relatives to appointments or shopping, or whatever

HOME
Water plants, take mail in & generally check all is well

Do not hesitate to ask - I am mature and versatile!
References available on request, Inc DBS*

Angela Sallis, 6 Melton Road, Long Clawson, LE14 4NR
01664 822597 angela_sallis@btinternet.com

Belvoir Foot Health Clinic

DipCFHP MPSPract professional standards authority accredited register

 **07714876006**

 **belvoirfothealthclinic.co.uk**

 **Suite G, Cotgrave Business Hub, Candleby Lane, Cotgrave, Nottinghamshire, NG12 3US.**

peas and would enter them in the Royal British Legion annual show winning prizes with them. She passed on her knowledge to her sister, Margaret, who also went on to grow exhibition quality sweet peas and win prizes.

After retirement Muriel spent many hours creating a really wonderful colourful country garden.

Liz Vear recalls—Muriel has a very engaging smile and a lovely chuckle. She loved gardening and I shall always think of her when I see a garden full of hellebores;

JUMBLE SALES—No Hickling Jumble Sale would be complete without seeing Muriel and Michael walking through the village with their wheelbarrow full of items for the jumble sale. Muriel's energy and stamina at these events certainly put the younger helpers to shame. Muriel would gather the better quality items and have her own section of the village hall with her stall which always took a great deal of money.

VILLAGE HALL COMMITTEE—Muriel was a member of the Village Hall Committee *Dorothy Chahal recalls*—Muriel was a very determined woman and liked to get things done.

When Muriel's mother began having mobility issues the family sold Malthouse Farm and built a bungalow on the site of Cromwell House. When Muriel's farm worker retired, Muriel decided to retire from dairy farming. A farm sale was held in 1978 to dispose of the stock and machinery.

MURIEL AND MICHAEL in later years Muriel married Michael Simpson., Muriel had got to know Michael at the Cropwell Bishop Chapel and they were married in 1991. From that time onwards they were always seen as a 'pair' and worked together as a team supporting each other.

Judith and Peter Harrison recall—we enjoyed being invited for afternoon tea with Michael and Muriel. Muriel would serve us delicious homemade cakes. Muriel had strong views on many topics but also had a great sense of humour.

The couple loved going on coach holidays and also joined many of the village coach day trips. As Muriel told Pauline Chell—these trips enable us to see places and have a relaxing day out with door to door service.

Molly Collishaw recalls—Muriel and Michael were excellent neighbours for over 30 years and always offered unwavering support and understanding. Muriel had her own little quirks and despite our repeated asking, she would never enter Malthouse Farm which had been her home for many years as she did not want to lose her memories of how it was when her family lived there.

Muriel died on 13th April 2023 aged 88 yrs. Her funeral service took place on Friday 5th May at 2.30pm in Hickling Church with a full Church. The service was followed by a committal at Clawson Lane Churchyard, Hickling. Over 60 people joined the family for refreshments afterwards in Hickling Village Hall. The food was prepared, cooked and served by members of Hickling WI.

The final words by Molly Collishaw:
Muriel was part of village life for so many years and will be sadly missed but had a life lived well.

(Carol Beadle June 2023)



Letter from St Luke's

You might think of the hymn 'All things bright and beautiful' as the 'universal hymn' given the number of contexts in which it is sung. It is a celebration of the created order of which 'the Lord God made them all', and the joy it brings us. It does concentrate on the rural idyll, which we, in these parishes, can enjoy around our homes. In that respect we are very fortunate.

There are many places where people are much more numerous than trees, and tarmac than meadows. The psalmist, in Psalm 24 wrote 'The earth is the Lord's and all that therein is'. That includes the products of the inspiration received by people, which in partnership with God have made the world a better place to live in. Even tarmac has its place. Without it, it would be much more difficult to travel about without sinking into the mire. There is beauty in the human mind when it is applied to the benefit of all people, as is God's will that it should be.

*He gave us eyes to see them,
And lips that we might tell
How great is God almighty
Who has made all things well.*

Best wishes
Robert C Jones

You may have engaged with the occasional message from Revd Paul that has appeared in these pages and perhaps wondered, 'who is he'?

For the last 8 or so years I have been the Priest in Charge of the St. Luke's Benefice (Hickling, Kinoulton & Upper Broughton churches), when it was added to my responsibility for Cotgrave & Owthorpe, with my colleague Revd Maggie Woodward as your Priest in Residence. In essence this has meant that whilst I had oversight of these three parishes Revd Maggie was charged with the direct requirements of ministry in your communities alongside your Lay Minsters (Robert & Sheila) and others. With the retirement of Maggie in April of this year her responsibilities for ministry here have been added to mine. So now I have a wonderful opportunity to really get to know the residents of our villages, and hopefully become known as a presence in the community. I intend to be 'out and about' as much as possible, so please do say hello if we chance to meet - the clerical collar (or 'dog collar' as it is more popularly known) is a giveaway, make contact via the details listed below, or indeed step over the threshold of your local church where you will receive a warm welcome.

With a blessing for you and your household,

Paul.

Services at St Luke's Churches in August and September 2023

Date	Day	Kinoulton		Hickling		Upper Broughton	
		Time	Service	Time	Service	Time	Service
30 Jul	8th Sunday after Trinity					10:00 am	Holy Communion
6 Aug	Feast of the Transfiguration	9:00 am	Holy Communion	6:30 pm	Evening Prayer	10:00 am	Morning Prayer
13 Aug	10th Sunday after Trinity	11:00 am	Morning Prayer	9:00 am	Holy Communion	10:00 am	Morning Prayer
20 Aug	11th Sunday after Trinity	11:00 am	Morning Prayer	10:00 am	Morning Prayer	9:00 am	Holy Communion
27 Aug	12th Sunday after Trinity	11:00 am	Morning Prayer	6:30 pm	Holy Communion	10:00 am	Morning Prayer
3 Sep	13th Sunday after Trinity	9:00 am	Holy Communion	6:30 pm	Evening Prayer	10:00 am	Morning Prayer
10 Sep	14th Sunday after Trinity	11:00 am	Morning Prayer	9:00 am	Holy Communion	10:00 am	Morning Prayer
17 Sep	15th Sunday after Trinity	11:00 am	Morning Prayer	10:00 am	Morning Prayer	11:00 am	Harvest Festival
24 Sep	16th Sunday after Trinity	11:00 am	Morning Prayer	6:30 pm	Holy Communion	10:00 am	Morning Prayer
1 Oct	17th Sunday after Trinity	9:00 am	Holy Communion	6:30 pm	Evening Prayer	10:00 am	Morning Prayer

Ministry Team:

Priest in charge: Revd Paul Massey (Rector of Cotgrave):

Email: rector@allsaintscotgrave.co.uk Tel. 01159 892223

Lay Minsters:

Sheila Hill. Tel. 01949 81096 e-mail sahill18@btinternet.com

Robert C Jones Tel 01664 822916 e-mail robert.c.jones02@gmail.com



JOIN THE DOVE COTTAGE 500 CLUB LOTTERY

An exciting way to support your local hospice **AND**
be in with a chance of winning fantastic cash prizes.

- Play from £5 per month
- Monthly draw with three cash prizes
- a top prize of up to **£500** and a
total prize fund of up to **£1000**
- All profits to Dove Cottage Day
Hospice's care services
- Winnings paid automatically
into your account
- Easy to sign up online or by application form

You can join online at www.dovecottage.org/500-club-lottery/, email lottery@dovecottage.org
or call **01949 860303** for an application form.



Registered Charity No. 1057941



St. Luke's Providing Refreshments at Scarecrows

Everyone wants our church building to stay open, but we as a village community will only keep it going if lots of us can occasionally help to raise the running costs.

Scarecrow Weekend 9th and 10th September
Our main fundraising event which needs the most help

WE CANNOT DO IT WITHOUT YOU! PLEASE

Can you offer help on Friday Evening setting up chairs and tables etc. in the church and churchyard?

Can you offer 1 or 2 hours between 10 am and 5 pm on either Saturday or Sunday serving in the church?

Can you offer 1 or more cakes over the weekend?

Can you offer to fill rolls from about 9 am both mornings? This can be done at home.

Can you help to clear up on Sunday after 4.30 pm?

**IF YOU THINK YOU WOULD LIKE TO JOIN IN,
PLEASE CONTACT:**

Alex at alex28thomas@btinternet.com or
text 07788 518156

THANK YOU VERY MUCH



Weekly Coffee Mornings on Thursdays from 10.30am.

Come and meet your friends, enjoy homemade cakes etc. and a warm welcome. No set charge, just a voluntary donation if you can.

This is your Village Church.

If you would like to support it in any way please contact:

Alex Thomas at alex28thomas@btinternet.com

**Could you offer a cake occasionally? Help with
cleaning twice a year by rota?
Help at events etc?**

The Hickling Information Board Project

STEVEN M. DAW

PLUMBING, HEATING and GAS SERVICES

Plumbing work – repairs; Central heating and boiler installations; Boiler servicing; Central heating power flushing; Bathroom design and installation

Over 30 years experience
Based in the Vale of Belvoir

Tel: 01664 822648 - Mobile: 07860 285031
Email: stevendaw@btinternet.com
www.stevendaw.com







The first Information Panel was installed outside the Village Hall in late June 2023. Carol Beadle and her team from the local history group are very grateful to the Village Hall Committee for all their help and support and also to everyone who has helped them with donations, including our Borough Councillor, Tina Combella.

We are also very grateful to Photocast who created the zinc-etched panel and to local craftsman, Jak Cotterill who designed, made and fitted the lectern stand.



Each panel will focus on the history of the village in the area around it and includes a QR code which takes you to a page on our website with more information and more photographs.

Why not try this one, now?!

The group is now working on a double-sided panel to be sited at The Church. If you would like to help with this project or would like to know more, please contact Carol Beadle on 01664 822195.





Freeview
EST 1982

HEWITT'S AERIALS

HUSBAND & WIFE TEAM

**DIGITAL TV AERIALS FITTED
& REPAIRED • FREESAT
EX-POINTS • TUNING
SETUPS • DIAGNOSTICS**

**FREE QUOTES • ALL AREAS
OAPs DISCOUNTS**

CONTACT MANDY OR DAVID

07554 387206
01664 820430
Corner Cottage, Clawson Lane, Hickling LE14 3AB

A.R. PEET LIMITED

Specialist Retailer of Wood, Gas, Electric and Multifuel Stoves

Tel: 01664 822397
www.arpeetstoves.co.uk
info@arpeetstoves.co.uk

**Home Farm
Main Street
Hickling**

Phishing Scams and some hints about fighting back ...

• Forward scam emails to: report@phishing.gov.uk

This is definitely not an official article; instead it is a few hints and tips based on personal experience.

An elderly relative has been the victim of two similar phishing scams in the last two years; for the purposes of this article, I'm going to use the name, Dave. Dave is OK, but his confidence has taken a severe battering and there is no doubt that the consequences are personal and severe.

Whoever these people are, surely these criminals must understand how intrusive and invasive and damaging their attacks are?



Clicking on links in emails ...

- Scam emails often look very plausible; they seem to come from someone that you trust or from a company that you trust.
- Common ones pretend to be from BT, McAfee, Norton, Paypal, Amazon or from banks or supermarkets.
- **Never click on links in emails unless you are sure it is genuine (see, below)**

This is what happened to my relative (who we'll call, Dave):

- An email came through from Norton Anti-Virus to say that a purchase had been made and Dave should click on the link to check the details.
- Dave has Norton on his computer and it looked genuine; he was worried because he knew he hadn't bought anything – he clicked on the link.
- This gave the scammers access to his computer and they planted malware which allowed them to track every key stroke he made and to see what was happening on Dave's computer in real time.
- They found Dave's online banking and attempted to get into the account.
- Fortunately, his family had set up two-step verification linked to a mobile phone. The scammers couldn't get in without the 4-digit one-time passcode which had to be sent to Dave's mobile phone. This is the only thing he uses the mobile phone for and he hates it ...
- So they phoned Dave; they pretended to be from Microsoft and said they were trying to remove a scammer who had accessed his bank account. They told him that he may have noticed his computer working more slowly than usual (which it was, because of the malware).

- They told him that his bank had sent him a code for him to pass on to Microsoft and would he give it to them now. They were kind, polite and supportive.
- By now, Dave was very frightened – the first time this happened, they took £5,000 before he knew there was a problem. He knew he shouldn't pass on the OTP code and he wanted to speak to his bank himself. But they kept talking and he became confused and flustered – if he could have accessed the OTP on his phone, he would have given it to them.
- When he couldn't get his mobile phone to work, the scammers became hostile. Eventually, they started to bully him and swear at him. When he put the phone down, they rang back within seconds – constantly, for hours. The calls were coming from multiple different numbers. By this time, Dave was anxious and very frightened.
- Fortunately, in a gap between calls, Dave managed to phone the direct line to his bank that his family had written down for him. In this case, it was NatWest, they have a dedicated line for elderly customers and they were brilliant. They told Dave to close his computer down and not to touch it again. They checked his account and reassured him that nothing had been taken. They gave him advice about what to do next.
- The next day, the scammers started to call again until, feeling embarrassed and humiliated, Dave told his daughter what was happening. She answered the next call and told them the police and the bank had been notified and gave them a piece of her mind. The calls stopped.
- The bank issued new cards and passwords – Dave couldn't use his account for nearly 2 weeks.
- A computer expert came in and cleared the malware from the computer and did a thorough check – this cost £200.
- Dave's daughter re-set all his passwords and accounts as well as sorting out the email account and junk – this took hours.
- The impact of this kind of attack is serious – Dave's health and his confidence have been seriously affected. Research, some years ago, found that elderly people who had been burgled rarely survive the next 12 months. Is this similar?



The 'I've got some photos for you' scam:

This one is particularly scary because you will seem to know who has sent it and I know that it is going around our villages at the moment. I have had several using email addresses apparently from people in the village and I know that my email address has been used, too.

- They seem to come from someone that you know; the email address looks familiar and you are being asked to click on a link to see some photographs your friend or relative wishes to share with you
- **Don't click on the link!**
- If it was genuine, your friend would have told you more about the event or location – it wouldn't be so vague.



IF YOU THINK YOU'VE OPENED A SCAM

LINK – shut down your computer immediately and get it checked by a professional.

If you think it might be a scam – this is what you should do:

- Check the sender: click on the icon next to the sender and you will be able to see the full address – it will be something completely different to the business, friend or relative's real email address.
 - **Mark the email as 'Junk'**
 - **Block** this sender so that they can't approach you again
 - **Forward** the email to 'report@phishing.gov.uk'
 - **Delete** the original email

Over time, the volume of spam emails will reduce – the Government system does work, they do close these criminals down. It is worth spending a few seconds reporting every spam email – it helps the experts tackle the problem and protects people like Dave.

We're a small community and we help each other: if you need help with managing any problems, please ask your family, a friend or a neighbour. It's nothing to be embarrassed about – the best of us, of all ages, get caught by these criminals.

COUNCILLORS NEWSLETTER AND UPDATE

Nevile & Langar Ward
COLSTON BASSETT, HICKLING, UPPER BROUGHTON, HICKLING PASTURES, KINOULTON, LANGAR cum BARNSTONE.

Dear All

I am into a new term as Borough Councillor for the Nevile & Langar Ward. I am sad to have lost my small, but happy and active community of Owthorpe, but glad to have reunited Langar with Barnstone under the new boundary changes. Since my term as Mayor, I have been reappointed Chairman of the Corporate Overview Scrutiny Group on the Council.

My contact details are: Clr.tcombella@rushcliffe.gov.uk

RURAL CRIME

What the police have been doing.

Six suspects have been charged as part of an investigation into **a rural theft and burglary conspiracy** worth nearly a million pounds. Large amounts of plant and agricultural machinery, pick-up trucks, vans and power tools were stolen over a two-year period.

More than £910,000 worth of items were taken in total during a series of large-scale thefts and commercial burglaries across the East Midlands region and have affected many of you I know, in the Nevile & Langar Ward.

PARISH COUNCILS AND VOLUNTEERING

Particularly since lockdown, many Parish Councils find themselves seeking new Councillors – people interested in their village and communities who would like to make a difference. It is an interesting journey being a Parish Councillor – not necessarily political. You find out just who does what and how the tiers of Government work and just how you can make that difference. It really puts you in touch with your fellow citizens – so why not give it a go.

Many volunteer groups in the Parishes are looking for volunteers to carry on the work of the tireless residents, who always seem to be there for every local event. These groups need more volunteers, particularly the younger residents with the energy and often up to date 'know how' that is so badly required – but all are welcome – There is a place and job for everyone. It is a great way of making friends and putting that bit back into the community. This year the new Mayor is holding a Civic Dinner which will highlight the work of volunteer groups.

Our Grantham Canal

GRANTHAM CANAL WATER RESTORATION GROUP are continuing their fight to keep the water in the Canal but need support and funding. A volunteer group is being set up in Kinoulton to help to keep the water flowing following the incredible work of CRT in removing the Reeds, thanks to £27,000 GCWRG helped facilitate from Rushcliffe Borough Council. However, today I received the following news



I have some important news to share with you about the future of the nation's canals which you may see in the press or wider communications over the next few days. The Government has just announced a long-term funding settlement for the Canal & River Trust for the period from 2027 to 2037, to follow on from the current grant agreement. Whilst the Trust welcomes a further long-term commitment to the nation's historic waterways, the amount awarded represents a steep reduction in its funding of over £300 million in real terms over the ten-year period.

This presents a serious threat to the nation's canals. It represents almost a halving of real-terms public funding for canals in the ten years from 2027 compared with recent years. It will lead to a decline in the condition of the canal network and the alarming prospect of canal closures.

This comes despite a Government Review, shared with the Canal & River Trust and expected to be published, confirming that its funding is 'clear value for money', with canals shown to deliver substantial benefits to the economy, to people and communities, and to nature and biodiversity.

<p>Tree Felling Lopping, Pruning, Ground Clearance, Tree Surgery, Fencing, Planting, Logs, Wood Chipping, Hedges Maintained.</p> <p>Fully Insured</p>	<p>Tel. 01664-822471</p> <p>Keith Wadkin & Son Tree Specialist Hickling Melton Mowbray, Leics. LE14 3AQ</p> <p>Established 1959</p> 
---	--

I am sure you will share our disappointment at the Government's decision. We are determined to fight to change it, to re-state the case for the funding needed to keep canals alive and to sustain the wide range of benefits they deliver. With your help, and that of all our other partners, users, boaters, volunteers and supporters, we will continue our campaign over the months ahead whilst also taking every opportunity to generate funding from other sources, and to deliver our work efficiently. Together we can keep canals alive and thriving for the future.

As a valued partner of the Trust you can help to #KeepCanalsAlive by sharing this news on your social media channels and encouraging your audiences to join our campaign. www.canalrivertrust.org.uk/keepcanalsalive

Volunteer groups are required at all points along the canal.

Are you passionate about the canal?

Do you want to get involved?

Could you help set up a group for your section of the canal?

We will help with providing tools, insurance and advice. If so please contact

GCWRG@yahoo.com

Lengthsman scheme

Council Grant money to employ a Parish "caretaker"

The lengthsman scheme is an arrangement between the County Council and parish councils.

The parish councils employ a lengthsman. They carry out minor local highways jobs identified by the parish council.

NCC provide:

an annual grant - initial training - basic equipment.

Jobs a lengthsman can do:

- grass cutting
- cutting back overhanging hedges
- ensuring visibility of traffic signs
- maintaining heritage and non-mains powered signs

- clearing drains
- clearing minor storm debris
- tidying roadsides
- digging out ditches in verges
- repainting traditional finger and mile posts
- reporting safety problems to the council.

It doesn't affect the County Council legal responsibility to maintain roads and pavements. In short, the Parish Lengthsman scheme is all about doing the little things that matter to our communities today. Encourage you Parish Council to apply. Langar already have a Lengthsman.

GRANT MONIES AVAILABLE FOR COMMUNITY GROUPS AND PARISHES UNITED KINGDOM SHARED PROSPERITY FUND - The Government's levelling up grant monies.

Underneath the overarching aim of building pride in place and increasing life chances, there are three UKSPF investment priorities: communities and place; supporting local business; people and skills. It provides £2.6 billion of capital and revenue funding for investment in local projects to be spent by March 2025.

Year 1 funding 2023 is now allocated – as we know, £27,000 has been spent on Reed Clearance in the Grantham Canal

Year 2 funding will focus on

- Improvements in town centres – Bingham Market place and West Bridgford
- Capital Grants for neighbourhood infrastructure projects e.g., community centres, community support, active travel, green spaces, play areas etc.
- Improvements to green / blue spaces e.g. Compton Acres watercourse and further Grantham Canal works
 - Projects focussing on Heritage assets
 - Tourism / inward investment initiatives
- Business support package, both joint commissioning across N2 and local initiatives including grants
 - Projects supporting decarbonisation
 - Continued support with cost of living.

REPF - Rural England Prosperity Fund.

- Grant pot for community projects: £69,000 which could support: Infrastructure support for local civil society and community groups, Creation/improvement to green spaces, Active travel, Cultural, historic and heritage institutions and activities.

Parish Councils and Community groups should be formulating their proposals now and seeking advice from the Borough.

If you have any queries, please contact me at Rushcliffe

Cllr.tcombella@rushcliffe.gov.uk

Tina Combella



VALE ELECTRICS
ELECTRICAL CONTRACTORS

www.valeelectrics.co.uk



HANWELL WINE ESTATE

www.hanwellwine.co.uk

Craft Fayre Sunday
4th June '23

Award-winning English wine from Nottinghamshire family vineyards est. 1975

- Vineyard Tour and Wine Tasting
Rated 5-star in customer reviews
taste 6 wines, 2-hours
- Tour and tasting gift packages from £25
- Celebrate: birthday, anniversary, wedding, hen-do
- Traditional method vegan English Sparkling Wine
- Still White, Rosé, Cherry & Mead
- Café bar and wine shop open Fri-Sun 11-4pm
- DIY wine tasting and vineyard trail at your leisure



Rural Antics - Art, Craft and Skills Workshops

- | | |
|--------|--|
| July | Perfect piping, Felt bowl, Wedding cake, Pencil drawing, Photography, Silver bangle, Willow weaving, Wine glass painting, Stained glass. |
| August | Sew the Hanwell hare! Pencil portraits, Mosaic, Silver necklace, Spinning ring, Owl or gong carving, Silk painting, Willow weaving, Mixed media art. |
| Sept | Kuksa carving, Ceramic vase, Silver clay, Felt bowl, Book binding, Lino printing, Smart phone photography, Acrylic Christmas Cards, |

Full details and bookings online



Hanwell Wine Estate, Hickling Pastures, South Notts, LE14 3QG
hello@hanwellwine.co.uk Tel: 01949 81393 www.hanwellwine.co.uk



OFFICIAL

PUBLIC CONSULTATION Hickling CONSERVATION AREA REVIEW

Proposals for the creation of a Hickling Conservation Area are now available for a period of public consultation beginning on Monday 21st August until Tuesday 12th September 2023.

A consultation event will be held at The Plough Inn on Monday 4th September from 5pm until 7pm where council staff will be on hand to answer any questions you might have.

Copies of the draft document will be available to view at Rushcliffe Arena reception during business hours and from the Parish Clerk, Julie Holland - hicklingparishclerk@gmail.com or 01949 823902.

The document will also be available online via:

<https://www.rushcliffe.gov.uk/planning-growth/conservation/conservation-areas/about-conservation-areas/>

If you wish to make comments on the proposals these can be submitted via email to conservationareas@rushcliffe.gov.uk

or by post to:

Conservation Area Review, Planning Department, Rushcliffe Borough Council, Rushcliffe Arena, Rugby Road, West Bridgford, NG2 7YG

RUSHCLIFFE - GREAT PLACE • GREAT LIFESTYLE • GREAT SPORT

Are you worried about speeding?

Hickling Parish Council would like to know if you feel that there is a speeding problem in Hickling and/or Hickling Pastures. If you do and would like to be part of a group for the village, please contact the clerk on:

hicklingparishclerk@gmail.com before 18th August.

Hickling Parish Council have been contacted by Upper Broughton Parish Council in view of contributing towards the purchasing of speed awareness equipment; however, we would need a group of villagers committed to carrying out organised speed checks around the village.

The group would need to be at least 3 parishioners, these parishioners would liaise with Upper Broughton's speed awareness group to arrange the use of the equipment around Hickling/Hickling Pastures. The Parish Councillors would need to vote to agree to partly fund the equipment with Upper Broughton, so this would need to be put on the agenda for the Hickling Parish Council meeting on 29th August. Thank you.



Hickling Parish Council
Serving Hickling and Hickling Pastures

MAKE A CHANGE BECOME A COUNCILLOR

MAKE A CHANGE BECOME A COUNCILLOR FOR HICKLING PARISH COUNCIL

- Are you passionate about your community?
- Do you want to help make a long-lasting change?
- Do you have innovative ideas for the council?
- Do you have concerns about a specific issue and want to do something about it?

If this is you, then we need you. We need people from all backgrounds and experiences. Make a change and become a councillor.

WHAT DO LOCAL COUNCILS AND COUNCILLORS DO?

Local (parish and town) councils and councillors make a massive difference to local people's quality of life. They are passionate about their communities and seek to make a change to help improve their residents' lives. Parish Councillors need to be capable, enthusiastic, and engaged to reflect their communities. It is important to be a team player and to be willing to take an active role within the Parish Council.

Local councils run numerous services, depending on the size of the council. Many you will see day-to-day, but some are less known. These include introducing solar panels, setting up dementia-friendly groups, creating neighbourhood plans, managing allotments and open spaces, maintaining footpaths, public seating, and litter bins.

In order to become a Parish Councillor you will need to meet **one** of the following criteria:

- Be a local government elector of the Parish (registered to vote).
- Have, during the whole for the 12 months preceding the day on which he/she was nominated as a councillor, occupied as tenant or owner, any land or other premises in the Parish.
- His/her principal or only place of work in the 12 months preceding the day on which he/she is nominated as a councillor has been in the area of the Parish.
- Have resided either in the Parish or within three miles thereof during the whole of the 12 months preceding the day on which he/she is nominated as a candidate.

There are certain disqualifications of which the main are:

- Bankruptcy.
- Having been sentenced to a term of imprisonment of not less than three months during the five years preceding the election.
- Being disqualified under any enactment to corrupt or illegal practices.

Hickling Parish Council have two vacancies.

If you are interested, please email hicklingparishclerk@gmail.com with a covering note explaining why you would like to become a Parish Councillor, please state when you moved to the village. Please contact the Parish Clerk as soon as possible. An informal interview will be held with the Parish Councillors and a private vote will be held. The Parish Council will then look at the application at the next meeting.

We hope to hear from you, Hickling Parish Council.

Parish Council for Hickling & Hickling Pastures.

Summary of minutes from meeting held on 18th May and 13th June 2023. Full Minutes are published on Parish Noticeboards and at <https://hicklingnotts.org/parish-council/>. At the meeting on 18th May the Declaration of Acceptance of Office was signed by Councillors Green, Playle & Prosser with Councillors Lamb and Rowe signing later. It was agreed that the Chair would be taken on a rotating basis for the foreseeable future.

Raised by parishioners:

(May 18th) Parishioner asked that the rotating chairperson could formally open and close the meeting. It would also be beneficial if the chairperson could advise if they will allow comments through the meeting from parishioners, as at times after the open session is closed, some members of the public talk when the Parish Council meeting has opened, it would be appreciated if the chair could state if they will be holding the meeting as a collaborative meeting. The suggestion was accepted and approved and was carried out for the first time at the meeting on June 13th.

(May 18th) Parishioners were surprised that Cllr Lane had stood down and that there was no notification that he was not remaining on the Parish Council. It was explained that Cllr Lane decided not to stand for re-election and the information concerning the election was on the notice boards.

(May 18th) Parishioner raised concerns with regards to the verge cutting on the 17th May, as was not sure if any damage had been done to the trees by Walkers' Green. Cllr Combella advised that RBC have published the no mow notice for May. Clerk to contact parishioner who is the village tree warden.

(June 13th) Parishioner reported that the pavement by Walkers' Green is damaged, as it looks like a heavy vehicle has gone over it, as parishioner does not have the What3Word app the clerk will report this.

(June 13th) Parishioner said that there is a cardboard cutout of a policeman at Stanford on the Wolds, and it is effective as it makes you slow down, and wondered if it was possible to have one for the village. Clerk advised that Kinoulton also has one, however, this was not arranged by the PC.

Planning:

23/00599/FUL: Quorn House Folly Hall Lane Hickling Pastures. The application was supported; one comment supported the application, nice design, doing a good job with a 1960s house. Paul Phillips at RBC has requested a Bat and Eco survey carried out. Decision: refuse permission.

Old Wharf Tearooms: in response to correspondence from a resident, councillors agreed to write to Mr Paul Muter (breaches/enforcement officer, RBC) following the recent planning refusals and to clarify how and when the identified planning breaches will be enforced. And, also to clarify the Highways and parking places situation which remains vague despite there being clear calculations designed to correlate the seating capacity of the business and the number of parking places required.

Tree preservation ref 23/00028/CONARE: Bridge View House Hickling - Rushcliffe Borough Council does not propose to make a tree preservation in this instance and work can be carried out.

23/02977/FUL: Home Farm, Main Street, Hickling. Convert garage into office including raise roof height and alterations to fenestrations (Retrospective). Decision GRANT PLANNING PERMISSION **23/00595/FUL** Erection of new two storey dwelling. Associated landscaping and access works. Willow House, Melton Road, Hickling Pastures. Councillors agreed to object to this application as it contravenes policy H10 (Housing Provision) of the Neighbourhood Plan.

Tree Preservation Order: lime tree in churchyard. RBC advised that they would not make a TPO in this instant but that the application had been made by a neighbour; the landowner's permission (the Church) is required before work can be carried out. Given the prominent nature of the tree the Council would expect a replacement Lime to be planted within the Churchyard. Cllr Playle has contacted the Senior Design and Landscape Officer Property Services, at RBC; an Arborist has submitted a report, which states that the tree has three cavities.

The contact at RBC has suggested that Hickling PC put in Tree Preservation Orders for trees in the village that the PC feels are valuable. Cllr Playle suggested that the PC contact the village tree warden to see if he would be interested in mapping the trees that are felt to be important to the village, and how much this work would cost if it was approved by the PC.

A parishioner asked Cllr Cottee about a Cherry Tree that is on the land in front of her house, Cllr Cottee said that he will look into this for the parishioner.

Ward Member report:

(18th May) – no update on service Station planning application.

(13th June) Cllr Combella advised that the RCVSG (Rushcliffe South Villages – Community Safety Group) meeting had taken place, and priorities are rural crime and speeding. CCTV trial had been



set up in Cropwell Bishop, to help us all to keep safe.

(13th June) Cllr Combellack suggested that a community noticeboard for Hickling was purchased, and could possibly use the grant that has been received for the Coronation. She felt that the village needed a notice board that they could put up information on.

(13th June) Cllr Cottey advised that his grant fund has been cut to £3,000, as he has 10 parishes that will be £300 per parish, if the PC could advise what they would like the monies for and put in an application. He had hoped to have an update for the meeting with regards to the re-surfacing of Melton Road, however, that had not been received, any updates will be passed to the Clerk.

Finance & Assets:

Register of Interest – all Councillors to submit register of interest by 28th May to the clerk, so they can be emailed to the Monitoring Officer at Rushcliffe Borough Council.

Assets of Community Value (Canal & Basin) – submitted on 19th April. The Wharf and Wharf Building are already covered by an existing ACV. Nicola Wells from RBC will write to the landowners affected.

Review of Internal Financial Controls – as per associated paper circulated prior to the meeting. Proposed by Cllr Prosser that these are accepted and signed, agreed by all, document signed by Cllr Prosser.

Standing Orders – updated March 2023. Councillors agreed to add collaborative meetings to the SOs.

Cemetery: Cllr Playle has advised the contractor re-size of the boulders for the unconsecrated area.

Walkers' Green Annual inspection – action points. 1) On gate. Fitting working out of timber exposing a sharp edge – action push back into timber. Amber. 2) Swing seat, cradle support structure is bent, and the cradle strut is cut – rating 7 – Green. Looks like the entire cradle swing seat will need to be replaced. 3) Report mentions that the swing equipment is dirty, or algae covered, rated at 6, needs to be removed (depending if it is felt that the algae will disappear in the summer). Cllr Green will hammer the exposed sharp edge down, also cut off the protruding bolts shafts on the gate. He will look at algae on swing frame to see if contractor needs to be involved with cleaning this off (work completed; June 13th).

Zurich Insurance have advised that monthly inspections are sufficient.

(June 13th) **Annual Internal Auditor Report 2023 & Accounting Statements:** [see full Minutes on the Parish noticeboard and online.](#)

(June 13th) **Annual Governance Statement 2022/23:** [see full Minutes on the Parish noticeboard and online.](#)

(June 13th) **Asset of Community Value – renewal of The Plough Inn.** After being unanimously approved by Councillors the application to renew has been submitted to Nicola Wells at RBC.

(June 13th) **Conservation Area Appraisal – review:** Draft 4 is now being worked on.

(June 13th) **Parish Council has 2 vacancies** – possible co-option, Chairman asked if any parishioners attending would like to consider joining the Parish Council, this was declined.

(June 13th) **Annual Risk Assessment:** Cllr Prosser and Clerk to do parish assets risk assessment end of July (due to holidays) and end of Nov.

Environment:

The black poplar in the cemetery looks alive as new buds forming and doesn't need replacing, this needs to be watered.

DLUHL Consultation Infrastructure Levy, no comment from PC. Cllr Combellack advised that the government launched a new fund recently.

Canal Reed Clearance - update from Cllr Playle, there was evidence that nutrient pollution is having a negative impact on water quality, ecology and wildlife along the whole of the Hickling stretch. No water is getting through from Denton or Knipton reservoirs. There is a concrete bund across the canal at bridge 37 which under current conditions is preventing any flow from the east. As of 29th May the River Smite is completely dried up after a very wet March and April.

Draft Noise Action Plan covers the period from 2024 to 2028 – East Midlands Airport. Parish Councillors have read the circulated associated paper and no comment from HPC.

Highways & Street Furniture:

(June 13th) **Noticeboard relocation to Hickling Pastures.** Cllr Rowe received communication from Via East Midlands Ltd to advise that they need to do a utilities search and obtain authorisation re trimming the hedges where the notice board will be located.

(June 13th) **Air Ambulance/Heliport** – Cllr Rowe updated the PC. A further meeting took place in April after further complaints due to multiple flights on the 16th April. The air ambulance manager agreed to speak to his team, however, the representative for the Heliport refused to acknowledge any issues and have said that in future they will liaise with the Planning Enforcement Officer at Rushcliffe Borough Council and not the Parish Council. Cllr Rowe asked the approval of the PC members to continue to liaise with the Planning Enforcement Officer at RBC, this was agreed by the other attendees.

(June 13th) **Community Speed Watch** – deferred from February's meeting, re correspondence



Hickling Parish Council currently has two vacancies YOUR VILLAGE NEEDS YOUR HELP!

**Please email:
hicklingparishclerk@gmail.com**

received from Upper Broughton, does the Parish Council wish to invest in equipment with Upper Broughton:

1 x Bushnell Velocity Speed Gun	Approx. £195
1 x Calibration tuning fork	Approx. £35
2 x Portable warning signs	Approx. £150
1 x handheld traffic counter (e.g., traffic counter x 4 from Amazon)	Approx. £12
3 x Cat 2 long sleeved high viz jackets with CSW logos	Approx. £50
1 x Document folder with scheme paperwork and risk assessment.	

Parish Councillors discussed the possibility of setting up a Community Speed Watch group, it was decided if the parishioners wished to volunteer and run this, it could then be discussed at a future meeting whether the PC would like to part pay for the equipment with Upper Broughton. It was decided that a notice should go in the Standard and if parishioners were concerned about speeding for them to volunteer to run this for the village.

Community Engagement:

Coronation – update re. grant funding for plaque(s), Cllr Green advised that cheque received from RBC for £250. Associated paper regarding plaque design, which is made from brushed metal, Cllr Prosser feels that a more individual plaque would be suited to Hickling. As the local suppliers are unable to make a plaque, maybe a tree could be purchased to commemorate the Coronation. Cllr Playle will investigate the cost of a tree and possible position. Cllr Green will see if there are any other options re a plaque.

Website: It was agreed that Cllr Lamb would take over this Asset from Cllr Green, it is estimated that it will be up and running in approximately 2/3 months, Cllr Lamb to advise the Clerk when it needs to appear on the agenda.

Correspondence: None.

Finance and Account balances: see full Minutes on Parish Noticeboards and online.

Other items: None.

Date of next meetings (tbc): 25th July, 29th August, 3rd October, 14th November, 19th December.

Download the free Nottsbuss On Demand app for flexible travel within West Rushcliffe

PLANNING AN EVENING OUT IN WEST RUSHCLIFFE?

Travel with **Nottsbuss
On Demand** for just
£2 per trip!
(£1.30 for under 19s)



Nottsbuss On Demand has arrived in West Rushcliffe, connecting villages such as East Leake, Barton, Hathern, Sutton Bonington and Kegworth.

Buses are available to book daily between 7am and midnight and you can choose when you want to travel by booking your journey through an easy-to-use app or over the phone.

The buses will not have a fixed route and can travel anywhere between bus stops and designated points within the operating zones, where there is not already a scheduled bus service running.

Using smart technology, the bus will match your journey with other customers travelling in the same direction so you can be picked up along the way.

Find out more on the flexible, on-demand bus service by visiting the [Nottinghamshire County Council website](#).

YOUR PARISH COUNCIL

The Parish Council is the lowest tier of local government and is made up of representatives living within the local community who have an interest in community matters and who make decisions on behalf of the Parish.

Your Parish Councillors are listed below with their positions of responsibility:

Tracey Prosser: (Vice Chair) plus Finance & Administration & Assets portfolios - tjprosser67@gmail.com

Steve Green: Highways/Street Furniture portfolio, Grant Applications & Snow Warden - steve.j.green@gmail.com

Chris Lamb: Community Engagement portfolio - c.m.lamb@me.com

Peter Playle: Environment and Highways/Street Furniture portfolios plus Snow Warden - peterplayle@hotmail.co.uk

Ivor Rowe: Hickling Pastures, other roles tbc - ivor@rowepeople.net

Vacancy: for two councillors

Your Parish Clerk is Julie Holland and she can be contacted: by email - hicklingparishclerk@gmail.com and by phone – 01949 823902.

The Parish Council is here to help; however, many issues encountered in the Parish, do not fall under the jurisdiction of the Parish Council and you should contact the relevant authority in the first instance to assist you.

PLEASE CONTACT NOTTS COUNTY COUNCIL:
www.nottinghamshire.gov.uk or call 0300 500 8080 - Monday to Friday 8am to 6pm for issues relating to:

Roads & pavements including obstructions and potholes/roadside verges/road gullies or drains/streetlight faults/trees on public land/bus services.

PLEASE CONTACT RUSHCLIFFE BOROUGH COUNCIL: www.rushcliffe.gov.uk or call 0115 9819911 for issues relating to:

Planning
Waste – including fly-tipping
Electoral matters.
Council Tax

If you have an issue and you are unsure of who can help, or a previously reported issue remains unresolved then contact the Parish Clerk; hicklingparishclerk@gmail.com

If you wish to comment on a planning application:

You can comment online by searching for 'Rushcliffe Planning' - go to 'simple search' type in 'Hickling' and scroll to find the application.

Or you can write to:

Planning & Development
Rushcliffe Borough Council
Rushcliffe Arena
Rugby Road
West Bridgford
NOTTINGHAM
NG2 7YG

Always remember to quote the planning reference.

Please copy your comments to the Parish Council and Borough Councillor, Tina Combella so that we can take your views into account in our decisions.

Diary

21st Aug	Conservation Area Review - consultation begins
4th Sept	Conservation Area Review—drop-in event, Plough Inn, 5pm-7pm
9th-10th Sept	Hickling Scarecrow Festival
12th Sept	Conservation Area Review - consultation ends
14th Sept	Historic Lincoln Trip (Local History Group)
22nd Sept	Fields in the Landscape; local history talk, VH, 7.30pm
29th Sept	Dove Cottage Fashion Show at Waltham-on-the-Wolds
1st Oct	Village Hall Breakfast
3rd Oct	(tbc) Parish Council Meeting—Village Hall—7pm
31st Oct	Local History evening at The Plough 5pm-8pm
11th Nov	Dove Cottage Firewalk at Langar Airfield
14th Nov	(tbc) Parish Council Meeting—Village Hall—7pm
19th Dec	(tbc) Parish Council Meeting—Village Hall—7pm
30th Jan	Local History evening at The Plough 5pm-8pm

Every Thursday at 10.30am: Coffee Morning in Church (please check venue during winter months
Beaver Scouts 6-8 years, Tuesday 6.15-7.15pm; Cub Scouts 8-10.5 years, Monday 6.00-7.30pm;
Scouts 10.5-14 years, Monday 7.30-9.00pm; Explorer Scouts 14-18 years, Tuesday 7.30-9.00pm

All at Kinoulton Village Hall

Contact for ALL sections: Susanne Youngson 0788 413 6890 gskinoulton@gmail.com

~~~~~

## Would you like to support the Hickling Standard with sponsorship?

Printing costs are an ongoing pressure for us but we are committed to delivering a free copy of the newsletter to every household in Hickling & Hickling Pastures.

We estimate that the costs are approx. £5 a year per household – great value for money!!

Please email [a.terry125@btinternet.com](mailto:a.terry125@btinternet.com) if you are interested in making a small (or large!) contribution to our costs; payments can be made by bank transfer & we can include your name in a list of our supporters (or you can remain anonymous, if you prefer).

## & thank you to those of you who already support us;

Hickling Parish Council    Scarecrows Committee    Samworth Foundation  
Peter and Philippa Jacks.    Adam and Donna Taylor    Pauline Chell  
Ann Blades (PeaPod Nursery)    Mr & Mrs A Chambers    Anonymous  
& all of our advertisers.

~~~~~


150 Club	Liz Vear	822562	Kinoulton School PTF	Sarah Parris	01949 823925	
Beavers	Susanne Youngson	07884 136890	Neighbourhood Watch	Tracey Prosser		
Bellringers	Lynn Irving	07388 348341		tjprosser67@gmail.com		
	lynn.irving74@gmail.com		Nottinghamshire Police			
British Legion	Colin Henson	01949 81453				
Councillors	John Cottee (County)			Control Room; non-emergency number	101	
	cllr.john.cottee@nottscc.gov.uk		Parish Council:	Clerk—Julie Holland	01949 823902	
	Tina Combellaack (Borough)			e.mail: hicklingparishclerk@gmail.com		
	TCombellaack@rushcliffe.gov.uk		Parochial Church Council			
Cubs	Susanne Youngson	07884 136890		Priest in Charge	Revd Paul Massey	
Film Society	Tim McEwen	822834		Email: 1revdpaul@gmail.com	Tel: 01159 892223	
Gardening Club	Mr B. Baxter	01949 81374		Churchwarden		
	Mrs B. Grundy	01949 81442		Treasurer	Alex Thomas	
Good Neighbours	Liz Vear	822562 or 07805 407229		Secretary	823420	
Scheme	Kay Hand	822612				
Guides	Alison Popplewell	01949 81604	Scarecrow Committee			
Hickling Pre-School	Nick	07950 558608		Karen Buckley (Chair)	07729 768366	
Hickling Standard	see previous page			Sally Jenkins (Secretary)	07971 520711	
History Group	Carol Beadle	822195	Scouts		Susanne Youngson	07884 136890
	Pauline Chell (fundraising)	822835	Table Tennis:	Alison	01664 822761 & Dave	01664 820262
	Jane Fraser	822845	Vale Readers	Elizabeth Evans	01949 81501	
	Gill Bloor	822682	Village Hall	Barbara McEwen (Chair)	822834	
	Mr Simon Paramore (head)			Tim McEwen (sec.)	822834	
	01949 81203		Village Choir	John Robinson (treas.)	822762	
	office@kinoulton.notts.sch.uk			Phillipa Jacks (bookings)	823622	
				Lynn Irving	07388 348341	
				lynn.irving74@gmail.com		
Kinoulton School			Women's Institute			
				Lynne Spencer (Secr.)	01159431008	
				Carol Beadle (Treas)	01664 822195	
				Pauline Chell (Trips)	01664 822835	

The Hickling Standard is printed by Adlards, The Old School, The Green, Ruddington: 0115 921 4863