



WE WANT



YOU!

DO YOU HAVE A HOBBIE OR INTEREST THAT YOU
WOULD LIKE TO SHARE WITH LIKE MINDED PEOPLE?
WHY NOT HOST A GROUP AT THE PLOUGH INN?
LET US HELP PROMOTE AND ORGANISE ATTENDEES.

ASK CHRIS OR KIRSTY ABOUT HOW YOU CAN GET
INVOLVED, POP IN, OR CALL 822225

The

Hickling Standard

Village Newsletter for
Hickling and
Hickling Pastures



Issue 148

June/July 2023



"Nurturing the seeds of learning"



Pea Pod Day Nursery is an OUTSTANDING Ofsted rated day nursery, set in the grounds of a small holding on the A606 Melton to Nottingham Road.

Pea pod provides the highest standards of care for babies and children from 6 weeks to 5 years old. Open 7.30am- 6pm, 51 weeks of the year. We have facilities for 29 children, split into three age groups, with each room designed and equipped with that particular age group in mind. Our extensive outdoor provision includes a large secure garden, 2 forest school sites and our own mini farm where the children can play, interact and help to care for the animals!



Where to find us:

Pea Pod Day Nursery
Melton Road
Hickling Pastures
Melton Mowbray
LE14 3QG

Tel: 07577209625

louise@peapod-daynursery.co.uk

HICKLING SCARECROWS 2023



Here at Scarecrow central, we're busy preparing for this year's festival. There will be stalls, fair-ground, street entertainment, beer festival, food and drink and of course Scarecrows!!

This year's theme is 'Occupations' so please save the date.

9th and 10th September
2023

Plenty of car parking will be available for just £3 per car, regardless of the number of passengers. (Cash only)

See you there!

This Year's Theme is

OCCUPATIONS!

SAVE THE DATE: 9th & 10th September 2023

Lots of help needed. Please contact Karen or Barbara

hedgehogsuk@yahoo.com

barbara.mcewen01@gmail.com



**DOVE COTTAGE DAY HOSPICE,
CHARITY SHOPS & TEA ROOM**

VOLUNTEERS NEEDED!

FLEXIBLE HOURS, FULL TRAINING GIVEN

Join a friendly team, meet new people and make a positive difference to a local charity.

www.dovecottage.org/volunteering
email admin@dovecottage.org
or call 01949 860303



WHERE LIFE MATTERS

Fashion Show

Friday, 29th September: Waltham on the Wolds Village Hall, 19 Goadby Road, Waltham on the Wolds, LE14 4AG

Fancy a fun evening out with friends, whilst picking up some nice clothes? We've partnered with a professional Fashion Show company to bring the catwalk to the Vale of Belvoir! There'll be a range of clothes to suit all age groups and sizes, and for all occasions. We'll have major high street brands, such as Next, Phase Eight and Monsoon, plus clothes from Italian and French boutiques, at a fraction of the normal sales price. There'll also be fizz and nibbles to make it a great lady's night out!

Firewalk

Saturday, 11th November: Langar Airfield, Harby Road, Langar, Nottingham, NG13 9HY. We are holding a very exciting event for 2023. Dove Cottage will run its very own Firewalk at Langar Airfield.

Following in the (very hot!) footsteps of several celebrities who've taken on this unique challenge, thrill-seekers looking for a new adrenalin boost will love it!

But firewalking isn't just about the physical act of walking on a lane of hot coals – it's whether you've got the mental strength needed to push yourself, and the euphoria that comes with the achievement. Participation in the event will include a motivational seminar which will equip you with all the mental and physical preparation needed to complete the challenge.

Have you got what it takes...?

Email fundraising@dovecottage.org to register your interest and you'll be the first to receive information on how to book. Due to the nature of the event, places will be limited.



The Coronation of King Charles III

As tradition dictates, the Saturday of the Coronation was grey and drizzly but a good time was had by all and Sunday was just lovely. We enjoyed a wonderful spectacle on the TV, parties and gatherings with neighbours, Village Hall Coronation Breakfast and a weekend long Festival at the Plough.

For galleries of the weekend, visit:

www.hicklingnottsllocalhistory.com/the-coronation-of-king-charles-iii/





→
... and a
surprise visit
from our new
King?!?
→



A Spitfire flew over
Hickling
at 1pm on
Sunday 7th May



(internet image - we weren't
quick enough to get a
photograph as it was
happening ...)

Village Hall 150 Club 2022/3 final draw February 2023

No. 154 £80 Mr&Mrs Hetherington
No. 114 £60 Mr&Mrs Lamb Hickling
No. 25 £40 Mr A Peet Hickling
No. 87 £20 Mr A Andrews Hickling



VALE ELECTRICS

ELECTRICAL CONTRACTORS

www.valeelectrics.co.uk

VILLAGE HALL CORONATION BREAKFAST

Many thanks to the organisers and workers at the Coronation Breakfast. Over a hundred people came to enjoy a great start to the day.

We were even busier than usual as problems with the drains meant that we had no sinks or use of the dishwasher. Without the help and hard work from friends and neighbours we would not have managed. Special thanks to Alison, Jo and Lynn for the use of their dishwashers, and to Emma, Maddy, Verity and friend for all their help. Also to Jean and Alan for overseeing everything and getting all the dirty dishes out to the right houses – and back again.

To mark the celebrations we have donated the money from our usual raffle to the charity Magic Breakfasts. They deliver free nutritious breakfasts every day to schools across the country where children would otherwise start the day hungry. Thanks to the generosity of everyone buying raffle tickets we've been able to send £207 to this excellent and sadly necessary organisation.

THANK YOU EVERYONE FOR YOUR HELP AND SUPPORT

Breakfasts will be back on October 1st



Squirrel Stores

The biggest "little" shop in the Vale of Belvoir



**Delivery service now available
on orders over £20**

(excluding cigarettes and tobacco)

**Contact us on 822315 or call in
to the shop for more details.**

- Greetings cards
- Artisan jams, chutneys, honey etc
- Newspapers and magazines
- Wines, beers, local ales and ciders
- Freshly baked Hambleton bread and produce delivered daily
- Selection of butcher's meat produce and Melton Mowbray pork pies
- Local cheeses
- Large variety of fresh fruit and vegetables (personal weekly fruit delivery and veg boxes available)
- Dry cleaning service
- Refill station
- Fresh sandwiches, sausage rolls, samosas etc

Opening hours:

Monday to Saturday 7am to 7pm

Sunday and Bank Holidays 8am to 1pm

01664 822315

The Sands, Long Clawson

The Royal British Legion

Vale of Belvoir Branch

70th Anniversary of the Korean War Armistice

On 25 June 1950, North Korean Forces crossed the 38th Parallel which had existed since the end of the second world war. In response, the United Nations Security Council approved a multinational force in response to the aggression.

Over 81,000 British and Commonwealth service personnel were deployed to Korea. It was the second largest international contribution after that of the United States. Of this number, over 1,100 were killed in action, thousands were injured and 1,060 suffered as prisoners of war.

By the time the Armistice was signed in 1953, the Korean war had claimed at least 2.5 million lives. For all the loss of life, however, hostilities ceased along a frontier that lay not far from the border that was in place at the start of the conflict. It remains one of the most heavily fortified borders in the world. The Armistice has not yet been replaced with a peace agreement, despite efforts to this end.

The Royal British Legion will be marking this important milestone in this often-forgotten conflict with a special service of Remembrance at Horse Guards Parade on Thursday 27 July from 11am. The event will focus on telling the story of the Korean War through the testimony and memories from those who were there, as well as looking to inform and engage the wider audience and attendees about a war which has never truly ended.

Michael Chapman



Caribbean Evening Sat 17th June, 5pm to 9pm Kinoulton Village Hall Garden

Steel band, Limbo dancing, Licenced bar, Cocktail bar

**Tickets: Adults £15,
Children £5, Family ticket
£35, Under 5's free
Tickets include a 2 course
Caribbean
meal. Children's food
available**

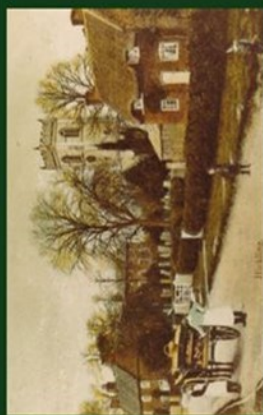
**Tickets from Vicki (81029),
Sue (81700) or Sheila
(81096)**





Local History Group
Hickling
Nottinghamshire

www.hicklingnottlocalhistory.com



Are You Interested in Local History?

~~~  
Research  
Transcribing  
Recording memories  
Events

~~~  
Old photographs
House Deeds
Family records
Businesses/Clubs/Societies

~~~  
We are looking for all kinds  
of involvement.

Please contact us:  
if you would like to be involved  
in the local history group or  
if you have any projects that  
you would like to work on or  
if you have material that we  
could add to our collections.

~~~  
info@hicklingnottlocalhistory.com
Facebook

Speak to: Carol Beadle, Gill Bloor,
Pauline Chell, Jane Fraser.

Messages

Please contact us with your
messages - we look forward to
hearing from you.



No welcome messages for this issue: but if you have recently moved
in to Hickling or Hickling Pastures and we haven't said, 'Hello!', we hope that you are
enjoying living in the village and your new neighbours look forward to meeting you.

~~~~~

Myself and my family are truthfully grateful for everyone that was able to attend  
John's funeral, we have been truly overwhelmed by the cards, flowers and  
messages of support we have received, it is comforting to know how much he was  
thought of and we shall and do miss him dearly  
Gill Bloor and family

~~~~~

The family of Muriel would like to thank the village community, WI Ladies, St
Luke's Church, Sheila, Anita, Alex and Alan and anyone else who helped in
organising the funeral and made it a special Goodbye to Muriel.

The donations at the church raised £230 for the Alzheimers Association that is
most appreciated.

We would also like to thank Margaret Woolley, Doreen Faulks, Vera Haynes and
Judith Harrison for their time spent sitting with Muriel whilst she was still living at
home.

Thankyou from Margaret, Rosemary & Family.

We're Looking for a New Editor!!

After stepping in temporarily following Maggy's retirement from editing the
Hickling Standard, we are now looking for a volunteer to continue the good
work; please contact Jane at frasermilk@outlook.com

- The newsletter is collated on Microsoft Publisher
- Help & support will be given by the team
- Involves 8-10 hours every two months (6 issues per year)

Historic Lincoln

September 14th 2023 - A

Trip from Hickling

Booking & Enquiries - Pauline Chell

01664 822835

(in aid of the Hickling Local History Group)



CLAWSON CORONATION QUICHE

King Charles and Camilla have made the Quiche their signature dish for the Coronation and Hickling WI which has the Clawson Dairy on their doorstep have developed a Quiche recipe using Clawson Blue Stilton and Red Leicester Cheese. This Quiche can be made in advance and reheated when required.

INGREDIENTS

PASTRY BASE

125gm plain flour

Pinch salt

25gm butter

25gm lard

2 tablespoons milk

OR 250gm block ready-made shortcrust pastry

OR 2 x ready-made plain flan cases as these are quite shallow so mixture will make 2

OR FOR A SPECIAL PASTRY CASE USE WHOLE- MEAL and WALNUT PASTRY- same method as shortcrust pastry.

50gm wholemeal flour

50gm plain flour

50gms butter

1 egg yolk [white can be added to the filling mix]

½ teaspoon mustard powder

20gm walnuts – ground

Water to mix

FILLING

1 tablespoon olive oil

1 large leek thinly sliced

1 stick celery finely chopped

3 eggs

350ml double cream

100gm BLUE STILTON

25gm grated RED LEICESTER

3 slices chopped ham - optional

2 tablespoons fresh chopped parsley

Pinch salt and black pepper

EQUIPMENT

20cm metal loose bottomed deep flan tin [this is best but any 20cm round ovenproof dish would do]

Sharp knife; scales; tablespoon; fork or hand whisk; rolling pin; mixing bowl; pan with lid; measuring jug; cheese grater

METHOD

TO MAKE PASTRY-

Sieve flour and salt in a bowl. Rub in butter and lard with fingertips until breadcrumb texture.

Stir in milk to bring mixture together into a dough. Knead very gently into a ball.

Put covered in the fridge for 30mins

Roll pastry out in a circle to line a 20cm flan tin.

Line the tin with the pastry ensuring there are no holes or the filling will leak.

Leave to rest for 30mins

Heat oven 180C 375F Reg 5

Line the pastry case with greaseproof paper and add baking beans to bake blind for 15mins. Remove paper and beans.

TO MAKE THE FILLING

Heat oil in a pan and add leeks and celery and fry over a high heat for 3mins.

Reduce heat and cover pan and simmer gently for 20mins until tender.

Beat eggs and cream together and season with salt and pepper

Spoon the leeks, celery and ham into the pastry case.

Cover with finely crumbled Stilton and grated Leicester cheese and parsley

Pour over the egg mixture

Bake 200C 400F Gas 6 for 35-40mins until golden brown.

Serve hot or cold [This quiche can be made ahead and reheated]



Luna Counselling & Psychotherapy

- **Pluralistic Counselling and Psychotherapy** including CBT, Person-Centred, Psychodynamic, Play Therapy and Gestalt.
- **Face to face, online** and via **telephone**.
- Based in **Cotgrave**, Nottingham.
- Ages **children to older adults**.
- Accredited Member of the **National Counselling Society** and on their **Children & Young People register**.
- **Fully insured, level 5 trained** and holds **enhanced DBS** certificate.
- Low mood and **depression, anxiety**, intrusive thoughts, **OCD, bereavement** and grief, **anger** and frustration, **phobias, relationship issues**, **lifework, motivation, self-defeating behaviours**.

Ellie Meakin

Ellie@LunaCounselling.co.uk

07444 529 521

Please contact for prices

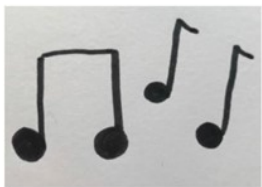


WI Spring Fayre

Members of Hickling W.I. with the Mayor of Rushcliffe Tina Combella who opened Hickling W.I.'s recent Spring Fayre at Kinoulton Village Hall. Despite a showery day the Spring Fayre was a resounding success. Visitors enjoyed a wide range of stalls and the excellent refreshments prepared by



members of the W.I. were very popular. Another welcome visitor to the Spring Fayre was Ruth Edwards the MP for Rushcliffe. The winners of the 'Money in the bucket' were Mrs.H who won £60 and Ms Young who won £25. The winner of the 'Name the Bunny' was Mr.O from Leics.



Music



Sign



Storytime

A fun music and story group for babies and preschoolers supported by Makaton signing.

Mondays 10-11am during term time

St Luke's church, Kinoulton.

£3 per family group per session.

for more information send Cate a message at musicsignstorytime@gmail.com or 07886169691

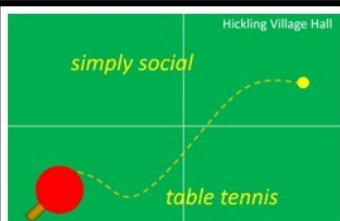


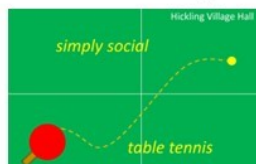
Table Tennis at the Village Hall!

Monday nights 8 – 10pm

It's a great opportunity to get out of the house, be active and keep warm. If we're not having a knock about, then there's always tea to be drunk!

Our ethos of 'simply social' is at the heart of our sessions which offer a friendly knock-about, or a more intensive game, and of course tea and biscuits together with the chance to socialise.

For more information call Alison 822761, or Dave 820262.



SIMPLY CALL 01664 822761 or 01664 820262
FOR AN INFORMATIVE CHAT

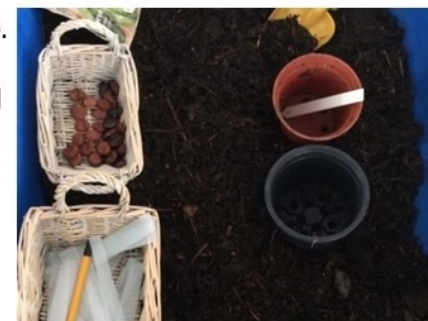
*Try our outdoor table at the Wharf in Hickling.
Bats and balls available from The Old Wharf Tearooms*



This term at preschool we have been planting and growing seeds using our homemade pre-school compost. We've planted some beans and we're waiting for our beanstalks to grow....just like Jack's!

We've done some royal activities for the coronation of King Charles 3rd and had our photos taken by Ellie Taylor photography.

The children who are leaving in July have been for a visit to Kinoulton Primary School for the afternoon which they all enjoyed. For the rest of the summer term we are going to learn about life cycles of the living things we find in the countryside.



We have had lots of new children enrol at preschool recently and some of our sessions are full currently, if you'd like your children to attend in the Autumn term its worth getting in touch early.

**We are located in Hickling village hall
Monday – Friday 9.15am-3.15pm**

during term time, you can visit our website hicklingpreschool.co.uk for more information on how to get involved or how to register your child.

Freeview
EST 1982

HEWITT'S AERIALS

HUSBAND & WIFE TEAM

**DIGITAL TV AERIALS FITTED
& REPAIRED • FREESAT
EX-POINTS • TUNING
SETUPS • DIAGNOSTICS**

**FREE QUOTES • ALL AREAS
OAPs DISCOUNTS**

CONTACT MANDY OR DAVID

07554 387206
01664 820430

Corner Cottage, Clawson Lane, Hickling LE14 3AB

Hickling Village Hall
Strictly Why Not Dance?
At Hickling Village Hall
Main Street, Hickling, LE14 3AQ
Thursdays - 4pm to 6ish.

Ballroom, Latin. An hour with instructor and time to practice afterwards.
£15 per couple - come and try some new moves.

Exercise the mind and the body and reward yourself with a cup of tea and some homemade cake.

Couples only at the moment.
No Booking required.



Local History Group



Email contact list:

general news and updates about projects that we are working on.

To join the mailing list, please send your name and details to us at: info@hicklingnottlocalhistory.com

Quarterly Gatherings at the Plough Inn.

Dates for your diary—please look out for the posters for more detail: **drop in, bring things, talk about things!**

Tuesday 25th July 2023 5pm-8pm—**maps and aerial photos**

Tuesday 31st October 2023 5pm-8pm

Tuesday 30th January 2024 5pm-8pm

Tuesday 30th April 2024 5pm-8pm

Headmaster's log book: 1876-1897

(one of our volunteers is currently transcribing the logbook which is full of the most fascinating snapshots of village life—in the meantime, a short extract)

Hickling Local History Group



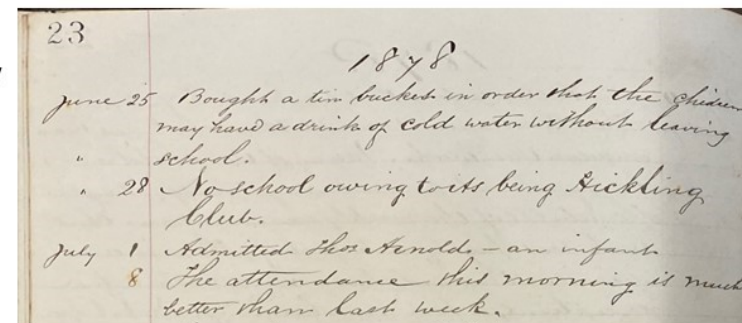
Information Boards Project

Views of Hickling—notecards FOR SALE

~ 2 Designs ~ £4 per pack ~ Packs of 8 ~
Available from Pauline Chell 01664 822835



1877. July 26.
The attendance this week is very poor. This morning there are only 76 present and properly there should be 96 at least. The haymaking may have something to do with it.



July 27. The gallery in the infant room is not regularly dusted. I must speak about it.

July 30. This (Monday) morning I noticed a pane of glass broken in one of the windows and on enquiry I found that it was broken on Saturday by EJ Rippon. Her father has promised to pay for it.

1878. June 3. Gave the children a half holiday on account of the Wesleyan Sunday School annual tea.

7. Average for the week 82

10. Whitmonday the attendance is only thin owing to its being the club walk at Broughton.

14. Average for week is 91.

21. The attendance has not been so regular this week as it ought to be. There are some children getting into the habit of being absent half of their time. Average for week 92.4.

25. Bought a tin bucket in order that the children may have a drink of cold water without leaving school.

28. No school owing to its being Hickling Club.

July 1. Admitted Thos. Arnold – an infant.

9. Had to send for F Gill who was about to go to the gardens instead of coming to school. I have also seen the father who has promised to send the boy regularly.

Hickling W.I.

Have you ever thought of joining Hickling W.I.? As a friendly and active group we meet at Hickling Village Hall every 3rd Thursday in the month & we're always looking for new members.

We arrange trips/visits in between our monthly meetings so why not pop along to a meeting or Pauline Chell 01664 822835 for further information.

By the way we don't sing Jerusalem or make jam.

Hopefully see you soon

From the Hickling W.I. committee



WHAT EXACTLY HAPPENS TO WHAT WE PUT IN OUR BLUE RECYCLING BINS

In May 2023, members of Hickling WI went to the Veolia Recycling Centre near Mansfield. The aim of the visit was to see exactly how the contents of our blue bins are processed for recycling and if we are using our blue bins as we should. It certainly proved to be an enlightening experience for us all.

The company, Veolia has a contract with Nottinghamshire County Council to collect and sort out the contents of our blue bins for recycling. Large lorries collect our blue bins contents from the Rushcliffe depot and take everything to a very large warehouse in Mansfield. Each day the huge mountain of items is sorted and by midnight the warehouse is clear for the next day's delivery. The plant only employs 80 people including the administrative staff but seeing how much sorting is done by hand made us all feel very humble and we realised we were not quite recycling as we should.

The contents of our blue bins, we discovered should only contain paper & card; steel cans & tins; aluminium cans; and plastic. However, for each of these items there are some things which the machinery at Veolia cannot process or cannot be recycled,

From the high mountain of our rubbish, the first items to be extracted are paper and card in a machine called a TROMMEL. We learnt that any shredded paper clogs the machines and so should not be put into our recycling bin. Other items to omit are glossy wrapping paper and greeting cards. Paper and card products suitable to recycle are washing powder boxes; cardboard boxes, junk mail, catalogues, & newspapers. Interestingly disposable used nappies often appear in the material collected with people thinking that 'disposable' means the same as 'recyclable'. The material travels next to the FERROUS METAL MAGNET which extracts all the steel cans and tins. This is a very highly valued product for recycling. We asked about washing out tins before putting them in the blue bin. For the recycling of the metal cans there is no need to wash the cans out BUT any food left in them will spill out and contaminate the paper in the blue bin thus making it useless for recycling.

The EDDY CURRENT MACHINE using a process to make aluminium magnetic for a short time removes aluminium cans. Any spray cans and aerosols can be put into the blue bin as these are extracted here with drink cans for recycling. We were informed that foil food tray and aluminium foil should not be put into our blue bins.

Lastly the waste goes into the OPTICAL PLASTIC SORTER where all the recyclable plastic is removed. The recycling of plastic is where there is the most confusion. Any soft plastic [which can be screwed up into a ball] cannot be recycled by Veolia as this is very low grade. Very rigid plastic

Trips in June

• **Friday 9th Day trip to Chesterfield** town to spend free time in the morning then the coach will go onto Bolsover to visit the Castle with time allocated to visit the shop & antiques centre

• **Thursday 29th evening visit to Stuart Dixon's garden at Stoke Bardolph** [he's radio Nottingham's gardener]. Entrance fee £5 [includes refreshments]. Members and non-members all welcome.

☎ Pauline Chell 01664 822835 or see her at one of the Thursday meetings for details & to book your place[s].



(cont'd) cannot be recycled either eg plant pots, coat hangers, plastic boxes. Previously black plastic could not be detected but a company which uses black plastic in its beauty products has invested a great deal of money into the optics process so black plastic can now be extracted at this part of the recycling process.

We were delighted to learn that the contents of our black bins are no longer put into land fill but go to generate electricity in a 'green manner'. Therefore, those items which Veolia cannot use still go into a reusable chain.

It was very apparent that in Britain we are very much behind other European countries when it comes to recycling and it was interesting to hear what is planned for the future.

The Government should shortly be bringing in legislation to ensure all waste throughout the country is dealt with in the same manner. This may encourage manufacturers to think more carefully about the packaging they use. At the moment, Veolia do not recycle fruit punnets as some of them are made from low grade plastic. It would be far too expensive to have a person examine the punnets to see which is of a quality for recycling. Other plans include a 'money back' scheme on cartons and bottles. We smiled as this was explained to us as though it was a revolutionary idea. Hickling WI members remember taking their dandelion and burdock bottles back to the shop to collect money.

Pronunciation Poem

I take it you already know
of tough and bough and cough and dough?
Others may stumble, but not you,
on hiccough, thorough, laugh and through.
Well done! And now you wish, perhaps,
to learn of less familiar traps?

Beware of heard, a dreadful word,
that looks like beard and sounds like bird.
And dead -- it's said like bed not bead --
and for goodness' sake don't call it deed!
Watch out for meat and great and threat
(They rhyme with suite and straight and debt)

A moth is not the moth in mother,
nor both in bother, broth in brother.
And here is not a match for there,
nor dear and fear for bear and pear.
And then there's dose and rose and lose --
just look them up -- and goose and choose,
and cork and work and card and ward,
and font and front and word and sword,
and do and go and thwart and cart --
come, come I've hardly made a start.
A dreadful language? Man alive.
I'd mastered it when I was five.

LADY FRIDAY Are you short of TIME?

I could support you when you're working or on holiday

PETS
Regular or occasional dog walking & pet care at your home

CHILDREN & ELDERLY RELATIVES
Meet children from school or take them to their recreational activities*
Accompany elderly relatives to appointments or shopping, or whatever

HOME
Water plants, take mail in & generally check all is well

Do not hesitate to ask - I am mature and versatile!
References available on request, inc DBS*

Angela Sallis, 6 Melton Road, Long Clawson, LE14 4NR
01664 822597 angela_sallis@btinternet.com

Belvoir Foot Health Clinic

DipCFHP MPSPract MPSP5909

07714876006

belvoirfoothealthclinic.co.uk

Suite G, Cotgrave Business Hub, Candleby Lane, Cotgrave, Nottinghamshire, NG12 3US.

Letter from St Luke's

A thought from Sheila Hill

I recently read a short article in our daily newspaper which brought out a wry smile.

A student from South Korea went into an art museum in Seoul where there was an unusual exhibit. It consisted simply of a fresh banana attached by duct-tape to a wall. The student went up to the display, removed the banana, unpeeled it, ate it, and then re-attached the skin to the wall using the same duct-tape. He then walked away, with a satisfied grin, in front of a group of stunned onlookers.

When stopped by museum officials and asked why he had eaten the banana, he replied that he was hungry, having skipped breakfast. The banana was part of something called 'Cattelan's Comedian installation', Cattelan being the Italian artist responsible for the work. He responded to the act of sabotage by saying simply, 'No problem', as the banana was replaced every two or three days,

However, my smile soon faded when I read that, in a previous similar incident when the same artwork was being displayed in Miami Beach, the 'thief', a well-known performance artist, had taken issue with the idea of a huge amount of money being raised from a banana costing 20 cents. Here, the first and second editions on display had sold for \$120,000 and \$150,000 respectively. The 'thief' commented, 'I have travelled in 67 countries round the world and I see how people live. Millions are dying without food. Then he puts three bananas on the wall for half a million dollars?' Food for thought indeed.

In Britain, people may not be dying from lack of food, though there have been a few isolated cases, but the fact is that there are now many who are struggling to put food on their tables to feed their families, and there are thousands who rely on Food Banks and local handouts.

The St Luke's Churches in our benefice have supported Emmanuel House in Nottingham for years. In its declaration of intent, Emmanuel House states: 'We support the most vulnerable citizens in Nottingham without prejudice or judgment in order to tackle isolation, vulnerability and homelessness.' As well as money, we have given regular donations of food, but the need is now even greater. We are grateful to those who already contribute, but if you are new to this and you feel you would like to help, the collection builds up anonymously in the big box in Kinoulton church porch and, when it is full, the contents are taken to Emmanuel House by a church member.

One final quote: 'When Jesus said "Feed the hungry" he also meant it literally'. Our church doors are always open during the day.

Ministry Team:

Priest in charge: Revd Paul Massey (Rector of Cotgrave):

Email: rector@allsaintscotgrave.co.uk Tel. 01159 892223

Lay Ministers:

Sheila Hill. Tel. 01949 81096 e-mail sahill18@btinternet.com

Robert C Jones Tel 01664 822916 e-mail robert.c.jones02@gmail.com

Services at St Luke's Churches in June and July 2023

Date	Day	Kinoulton		Hickling		Upper Broughton	
		Time	Service	Time	Service	Time	Service
28 May	Whit Sunday (Pentecost)	11:00 am	Morning Prayer	6:30 pm	Holy Communion	10:00 am	Morning Prayer
4 Jun	Trinity Sunday	9:00 am	Holy Communion	6:30 pm	Evening Prayer	10:00 am	Morning Prayer
11 Jun	1st Sunday after Trinity	11:00 am	Morning Prayer	9:00 am	Holy Communion	10:00 am	Morning Prayer
18 Jun	2nd Sunday after Trinity	11:00 am	Morning Prayer	10:00 am	Morning Prayer	9:00 am	Holy Communion
25 Jun	3rd Sunday after Trinity	11:00 am	Morning Prayer	6:30 pm	Holy Communion	10:00 am	Morning Prayer
2 Jul	4th Sunday after Trinity	9:00 am	Holy Communion	6:30 pm	Evening Prayer	10:00 am	Morning Prayer
9 Jul	5th Sunday after Trinity	11:00 am	Morning Prayer	9:00 am	Holy Communion	10:00 am	Morning Prayer
16 Jul	6th Sunday after Trinity	11:00 am	Morning Prayer	10:00 am	Morning Prayer	9:00 am	Holy Communion
23 Jul	7th Sunday after Trinity	11:00 am	Morning Prayer	6:30 pm	Holy Communion	10:00 am	Morning Prayer
30 Jul	8th Sunday after Trinity					10:00 am	Holy Communion
6 Aug	Feast of the Transfiguration	9:00 am	Holy Communion	6:30 pm	Evening Prayer	10:00 am	Morning Prayer



Goodbye

Sadly, our Associate Priest (vicar to many) had to retire at short notice on 14th May due to health reasons. All of us who are involved with St. Luke's will miss both Rev Maggie and her husband Noel greatly. Maggie served for 9 years in 3 churches, without remuneration, always well-prepared and upbeat. Noel was our Benefice Administrator serving, like Maggie, Kinoulton and Upper Broughton as well. He was also Treasurer in Kinoulton and supported Maggie's work in all 3 in many ways.

Not surprisingly, we will not be getting a replacement, but we will still have a service every week. Until further decisions are made our 3 churches are working with Cotgrave and Owthorpe where Rev Paul Massey is Priest. He is taking on care of the Benefice and Trevor Kirkman will also be kindly assisting with some of our services.

The PCC will be sharing some of the many tasks which Rev Maggie and Noel did in the background. New rotas will be out by the end of the month. Please support us as we enter a new stage determined to maintain the building and the contribution to village faith and life.

With our thanks to Maggie and Noel for their loyal, committed service over 9 years.



Weekly Coffee Mornings on Thursdays from 10.30am.

Come and meet your friends, enjoy homemade cakes etc. and a warm welcome. No set charge, just a voluntary donation if you can.

This is your Village Church.

If you would like to support it in any way please contact:

Alex Thomas at alex28thomas@btinternet.com

Could you offer a cake occasionally? Help with cleaning twice a year by rota?

Help at events etc?

Loneliness The New Epidemic

Research shows that loneliness and social isolation are harmful to health. Lack of social connections can increase the likelihood of early death by 26%. That risk is comparable to smoking 15 cigarettes a day, and is higher than that caused by obesity and physical inactivity.

To make matters worse we know that loneliness is on the rise, and we need to take it very seriously.

People often think that Covid was the beginning of this problem, but in actual fact loneliness has been increasing over decades.

As the world keeps changing moving faster and faster and we change with it, moving around for work, technology adapting how we engage and communicate with one another often from face to face in person engagement to online and via a screen. The findings of which suggest all of these things together are actually taking a toll on our relationships.

The good news is, now we know better we can do better

We now have the wonderful opportunity to become intentional about rebuilding those relationships because a lot of those relationships not only affect our mental health but also have an impact on our physical health.

To help turn the tide on this epidemic of loneliness in Rushcliffe, Rushcliffe Social Prescribing Service are partnering with Rushcliffe Borough Council, Rushcliffe Community and Voluntary Service and local Community groups to create a friendship group calendar consisting of free events and activities for people to join.

The hope being that we can create a warm welcoming environment where people can come along and have the space to cultivate new relationships and develop a communal sense of belonging whilst also having fun, trying out a new activity or just coming along to show their support.

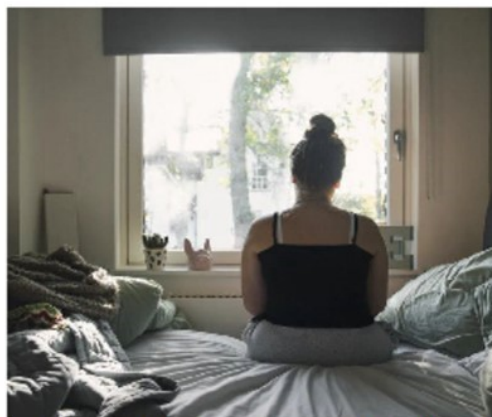
It's a huge misconception that loneliness only occurs in older people, in fact anyone can experience loneliness at any time and for many different reasons; bereavement, lack of spousal relationships, long term health conditions, younger adults are often those that struggle the most. We must all take responsibility for what is happening and take steps to help to change it.

For more information on our Friendship Group Calendar events and activities please contact Jackie Kendrick on Tel: 07888 676350

Or check out the information on the PCN website <https://www.rushcliffehealth.org/friendship-calendars> - soon to be live.

<https://www.facebook.com/RushcliffeSP>

<https://www.rushcliffehealth.org/population-health-management>



Loneliness and the impact on our physical health

Loneliness increases the likelihood of mortality by 26%. It is associated with an increased risk of developing coronary heart disease and stroke. It can increase the risk of high blood pressure and is a risk factor for the progression of frailty

Loneliness and the impact on our mental health

Loneliness puts individuals at greater risk of cognitive decline and dementia. Lonely individuals are more prone to depression and loneliness and isolation are associated with poorer cognitive function among older adults.

At Rushcliffe Social Prescribing, we have lots of different groups and activities for you to choose from. Our next meeting is a well-being walk with Move & Mingle at Rushcliffe Country Park
Wednesday 14th June 2023 10:30 AM - 11:30 AM

Please see the link below to book on.

Friendship Group Events and Calendars



Next event booking link.

<https://www.trybooking.co.uk/CJOW>

TO OUR FRIENDS IN FARMINGTON, MICHIGAN, U.S.A.

Another year has passed so quickly and we in Hickling Village once again celebrate the birth of our most famous son, FRED MALBY WARNER with you.

There have been some big changes in England following the death of Queen Elizabeth 11 and the subsequent crowning of King Charles 111 on Saturday 6 May 2023. The Queen, as our Head of State represented to many of us security and continuity in an ever-changing world. Her head was seen on all of our coins, banknotes and postage stamps and she was recognised throughout the world.

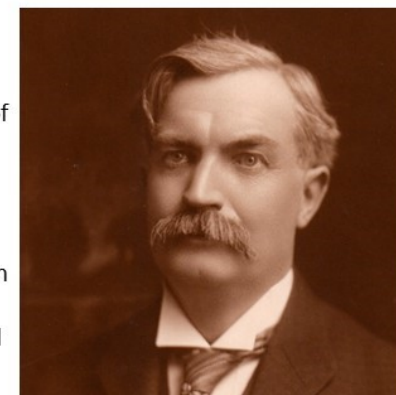
It is 70 years ago since the Coronation of Queen Elizabeth 11 on 2 June 1953 and on this day several of Fred's relatives participated in Hickling's Coronation celebrations. All the children received a China commemorative mug and a tin of sweets. 70 years after the Queen Elizabeth 11's Coronation; the King's Coronation in 2023 in Hickling was celebrated with the village coming together for a Coronation breakfast. The menu included a typical English Breakfast which is perhaps somewhat different to the American breakfast. We served fried eggs; lean dry cured bacon; locally made sausages; mushrooms; grilled tomatoes; black pudding, baked beans in tomato sauce and hash browns with lots of toast, jam, marmalade and tea/coffee/fruit juices. We are sending you some Royal memorabilia for your museum 'Hickling Collection' Prince William is now 2nd in line to the throne and when he married Catherine Middleton on 29 April 2011, collectable items were made to celebrate this event. One of these commemorative mugs is enclosed for your museum collection. When the Queen celebrated her silver jubilee in 1977 [she actually became Queen in 1952 but was not crowned until 1953] items were also made to celebrate this event. We are also including a plate made for this celebration.

The Cherry Tree in Hickling churchyard planted by a relative of Fred when she visited Hickling, continues to thrive and blossom each year. When the History Group has spare funds, we will erect a plaque under this tree explaining why it was planted. The History Group have embarked upon the task of erecting Information Boards throughout the village to tell the unique and interesting history of Hickling. We are raising money at the moment for History Information Board No 2 which will be placed in the churchyard. We hope to include on this a section about Hickling's most famous son, Fred Maltby Warner.

We hope your museum's birthday celebrations are a huge success and hopefully in the not-too-distant future some of you will come and visit us here in Hickling. Best wishes

Carol on behalf Hickling History Gp.

hicklingnottslcalhistory.com/fred-maltby-warner/



A busy time for Hickling W.I. Dancing with Mr. D'Arcey proved to be a really entertaining evening in April. Members watched whilst the dance group performed several dances for our entertainment and then were invited to join in. This proved to be great fun with lots of laughter and members not always remembering their left hand from their right and despite this thoroughly enjoying the dancing.



On Tuesday 18th April members and friends went on a coach trip in to Derbyshire to Thornbridge Hall for a conducted tour of the house. This proved to be a truly amazing place to visit. We were blessed with a sunny day so members were

able to explore the gardens as well. After lunch we travelled on to Ashbourne where there was the chance for some retail therapy.

The annual Bluebell walk at Strelley Woods on 27th April proved as popular as ever with members. After a leisurely walk morning concluded with lunch at the Broadoak pub.

On the 2nd May twelve members met at the Plough to play darts with member Ann Harby being their 'coach'. The group



have now progressed from hitting the wall to actually getting darts in to the dartboard. This caused much laughter when Liz Vear was searching the floor for her dart only discover that it was in the dartboard, - well on the very edge!!

On May 3rd thirteen members went over to Barnstone Bowls club for an enjoyable evening learning to play bowls. The weather was lovely and the members of the bowls club made us all very welcome and gave us excellent tuition Bending our knees and working out how the bowls would curve was certainly a challenge for us all. We finished off the evening chatting and enjoying the delicious refreshments provided by members of the bowls club.

Friday 5th May was a very sad day for Hickling W.I. members as it was the day that Muriel

Simpson was buried in Hickling cemetery. Muriel had been a member of Hickling W.I. for about 70 years and had held many positions including president, secretary and treasurer. We attended all dressed in bright colours which reflected the colours of the flowers in Muriel's garden. Our group were delighted to be able to put on the refreshments in the village hall after the funeral where we catered for sixty plus of Muriel's family and friends.



June is looking a pretty promising month with a trip to Chesterfield and Bolsover Castle, our Antiques/ Bargain hunt challenge to raise money for the Blood Bikers, a visit to Stuart's Dixon's garden and our very own garden party.

Muriel Simpson:





📍 The Basin, Main St, Hickling
Melton Mowbray, LE14 3AH

☎ 01664 820448

✉ relax@theoldwharf.co.uk

🖱 www.theoldwharf.co.uk

Time to relax and unwind

TEAROOM OPEN SEVEN DAYS A WEEK FROM 9.00 AM - 4.00PM



Please note the kitchen closes at 3.15pm and last drinks orders are at 3.45pm

📱 Find us on Facebook

Nottinghamshire Wildlife Trust Protecting Wildlife Today.

30 Days Wild
1 – 30 June 2023

Nottinghamshire Wildlife Trust has a number of Nature Reserves across the county, creating a rich tapestry of wildlife habitats to be enjoyed and protected for years to come.

These reserves encompass over 2,000 hectares of land, all of which needs managing. This is carried out with help from not only teams of dedicated volunteers and staff but also from the Trust's own flock of Hebridean sheep, (The largest flock of pedigree Hebrideans worldwide) which carries out conservation grazing across Nature Reserves, assisted by other sheep breeds and the Trust's cattle. In 1987 The trust added Fairham Brook and Skylarks the first wheelchair accessible Nature Reserve in the UK to its portfolio both in Rushcliffe.



The UK's month-long nature challenge

30 Days Wild is The Wildlife Trusts' annual nature challenge where we ask the nation to do one 'wild' thing a day every day throughout June.

Your daily wild activities can be anything you like – you might be having breakfast with the birds on Monday, feeling the grass between your toes on Tuesday, and watching wildlife webcams on Wednesday. There's no set structure, so you can take part in a way that suits you. Alongside benefiting your local wildlife, taking part in 30 Days Wild is scientifically proven to make you feel happier, healthier, and more connected to nature.

Anyone can take part in 30 Days Wild, we even have resources for schools, care homes and businesses. Sign up today and



receive a FREE pack in the post, plus lots of inspiration for activities.

Why not walk by the Canal or photograph the water fowl and wild life



WILLIAM HERCOCK

FOR ALL YOUR BUILDING
AND DIY SUPPLIES

SLABS ❖ AGGREGATES
WALLING ❖ CEMENT
BRICKS ❖ BLOCKS
ROOFING ❖ FENCING

ANY AMOUNTS CATERED FOR



**FULL RANGE
COAL &
SMOKELESS FUEL**

for delivery
or collection

MON - FRI: 7.30am - 5.00pm / SAT: 8.00am - 12.30pm

The Depot Airfield
Dalby Road
Melton Mowbray

Tel: 01664 500947
Fax: 01664 410650

STEVEN M. DAW

PLUMBING, HEATING and GAS SERVICES

Plumbing work – repairs; Central heating and boiler installations; Boiler servicing; Central heating power flushing; Bathroom design and installation

Over 30 years experience

Based in the Vale of Belvoir

Tel: 01664 822648 - Mobile: 07860 285031

Email: stevendaw@btinternet.com

www.stevendaw.com



Freeview
EST 1982

HEWITT'S AERIALS

HUSBAND & WIFE TEAM
DIGITAL TV AERIALS FITTED
& REPAIRED • FREESAT
EX-POINTS • TUNING
SETUPS • DIAGNOSTICS
FREE QUOTES • ALL AREAS
OAPs DISCOUNTS

CONTACT MANDY OR DAVID

07554 387206
01664 820430
Corner Cottage, Clawson Lane, Hickling LE14 3AB

A.R. PEET LIMITED

Specialist Retailer of Wood, Gas, Electric and Multifuel Stoves

Tel: 01664 822397
www.arpeetstoves.co.uk
info@arpeetstoves.co.uk

Home Farm
Main Street
Hickling

I DID IT!

Now to reach my target. I want to raise enough for at least 2 Air Ambulance flights

Every flight costs £4000 and I am a quarter of the way there. There is still time.

Come on the 'Just Giving' page will remain open till July – click on the QR code to make a donation



CHARITY ABSEIL

In support of
Lincs & Notts Air Ambulance
and Grantham Canal Water
Restoration Group

On Sunday, 14 May 2023, 2pm
the Mayor of Rushcliffe,
Councillor Tina Combella
will abseil off Kings Mill Viaduct
to raise money for her two
charities!

PLEASE VISIT:
www.justgiving.com/crowdfunding/mayor-abseiling-challenge

TO DONATE

Councillors News and update. from Cllr. Tina Combella

For Langar, Barnstone, Colston Bassett, Upper
Broughton, Kinoulton, Hickling and Hickling
Pastures, Colston Bassett

All change

We are now in a new Carolean era under a new King following the coronation on 6th May 2023

We are also in a new Borough Council term with a new Council, members and portfolio holders. I hope to be able to give you more information in my next newsletter.

Having gone through the recent election and period of purdah, where decisions are all on hold, there is little councillor's news to report at this time. The Annual Council meeting will take place on 25th May and committees will be formed.

Thank you I have been re-elected and hope to be able to continue to keep you up to date with council and community news on a regular basis.

Above is a list of the services your Councils provide.

cllr.tcombella@rushcliffe.gov.uk

Know your Council

In Rushcliffe, some public services are delivered by us, other services are the responsibility of Nottinghamshire County Council, and some services are provided by Town and Parish Councils.

Rushcliffe Borough Council	Nottinghamshire County Council
<ul style="list-style-type: none"> Refuse collection and recycling Street cleaning and playground maintenance (Streetswaps) Council tax collection Leisure Centres (Lex Leisure) Education (Golf Centre) (Lex Leisure) Car parks Electrics Sports development Arts and events (eg Lark in the Park, Christmas lights switch-on) Rushcliffe Country Park Planning and building control Environmental health including dog and pest control Housing and homelessness (with Metropolitan Housing) Processing of benefit claims Community Safety and Licensing 	<ul style="list-style-type: none"> Road maintenance including street lighting Transport (including public transport, residents parking and blue badge applications) Household waste recycling centres (HWRC) and landfill sites Libraries Schools Social care for children and adults Trading standards Indiana Thompson and Copley Country Parks Registration of births, deaths and marriages

<p>Tree Felling Lopping, Pruning, Ground Clearance, Tree Surgery, Fencing, Planting, Logs, Wood Chipping, Hedges Maintained.</p> <p>Fully Insured</p>	<p>Tel. 01664-822471</p> <p>Keith Wadkin & Son Tree Specialist Hickling Melton Mowbray, Leics. LE14 3AQ</p> <p>Established 1959</p> 
---	--

MAYOR'S ROUNDUP

Well, what a year I have had. Obvious highlights are around the Queens Jubilee, Accession, proclamation and Coronation and the visit of The Princess Royal. All of which involved historical and ceremonial events.

I have also enjoyed sporting events and musical entertainment, given certificates, and prizes and awards at sports days, exhibitions, and competitions and to Scouts and Brownies. The Rushcliffe Awards ceremony, which celebrates the inspiring people within Rushcliffe was a very exciting and rewarding event. Proms in the Park was a free event in Bridgford Park and was as good as Glastonbury.

However, the most enlightening events have been those involving the many charities and fund raising occasions I have attended. In particular;

- Rainbows Children's hospice, which is a total inspiration and provides not just for end-of-life care but guidance to patient and families, for those with life limiting illness but who still have a life to live.
- Maggie's the Cancer care and support charity.
- Mencap gardens, where people can go and find peace in nature, gardening, harvesting and eating the produce they grow.
- Notts. Wildlife Trust who celebrated their 60th anniversary recently, who look after the most amazing wildlife areas, Skylarks of course at Holme Pierrepont and is the only wheel chair accessible wildlife reserve in the UK,

(Mayor's roundup cont'd)

- Ruddington pantry – an organisation after my heart, who do not want food to go to waste – they give it away rather than it be wasted.
- Rushcliffe Food bank – what an amazingly well organised operation this is, delivering to needy families all over Rushcliffe. I asked the people of Rushcliffe to knit Easter chicks for me to contain Cream eggs donated by Morrisons, which were then given to the families using the food bank. Ruddington Yarn Ninjas also made knitted chicks for me.
- The Blood Bikers who transport blood, organs and plasma and lifesaving medicines and equipment quickly between hospitals.
- Riding for the Disabled – as a horse rider I know the bond you establish with a horse and the sense of freedom it can give. You can see the thrill in the faces of those who were riding, on this particular occasion, in front of Princess Anne who visited on an extremely wet day last Summer.
- Ukraine – a charity which of necessity will continue to be supported. The response has been overwhelming
- RosieMay Foundation and their pink Tuk Tuk which delivers help and aid to communities here locally and out in Sri Lanka. Read their story www.rosie-may.com
- Grantham Canal Water Restoration Group – which is already showing its value in the increased flow of water in the Nottingham to Grantham Canal – but there is a lot more work to be done, in fact there will always be work to maintain the water.
- The Lincs/Notts Air Ambulance which along with the Grantham Canal Water Restoration Group was one of my elected charities for which I have been raising money. As I am sure you know, even jumping off the Kings Mill Viaduct and abseiling down. My just giving page remains open until July, so it is not too late to donate. I would like to raise enough for two Air Ambulance flights at £4000 each. Just go to www.justgiving.com/crowdfunding/mayorof-rushcliffe

Volunteering

All those charities, village and community groups and many others, too many to



VALE ELECTRICS
ELECTRICAL CONTRACTORS

www.valeelectrics.co.uk



HANWELL WINE ESTATE

www.hanwellwine.co.uk

Craft Fayre Sunday
4th June '23

Award-winning English wine from Nottinghamshire family vineyards est. 1975

- Vineyard Tour and Wine Tasting
Rated 5-star in customer reviews
taste 6 wines, 2-hours
- Tour and tasting gift packages from £25
- Celebrate: birthday, anniversary, wedding, hen-do
- Traditional method vegan English Sparkling Wine
- Still White, Rosé, Cherry & Mead
- Café bar and wine shop open Fri-Sun 11-4pm
- DIY wine tasting and vineyard trail at your leisure



Rural Antics - Art, Craft and Skills Workshops

June Lino printing, Bentwood chair, Stained glass mosaic stepping stone, Willow weave a duck, Willow basketry, Spinning ring, Evening wood whittling, Silk painting, Felt flower.

July Perfect piping, Felt bowl, Wedding cake, Pencil drawing, Photography, Silver bangle, Willow weaving, Wine glass painting, Stained glass.

August Sew the Hanwell harel Pencil portraits, Mosaic, Silver necklace, Spinning ring, Owl or gonk carving, Silk painting, Willow weaving, Mixed media art.



Full details and bookings online

Hanwell Wine Estate, Hickling Pastures, South Notts, LE14 3QG

hello@hanwellwine.co.uk Tel: 01949 81393 www.hanwellwine.co.uk

(Mayor's roundup cont'd)

mention, that I have visited, need volunteers – it was obvious from my visits the satisfaction and friendship there is to be gained - so many people having fun and finding friends through volunteering.

Moment of Reflection

I held a Moment of Reflection before each of our Council Meetings. It was a time for Councillors to reflect upon the work in which they are involved and the decisions they may make. I am particularly concerned with how we communicate. We don't all think, speak, read or understand in the same way and so I invited people from the Dyslexia association, Deaf Society, foreign language speakers (in this case Ukraine) and Literacy volunteers to explain the difficulties experienced in communicating with authority representatives and community leaders, to hopefully improve our understanding.

Thanks to everyone for my wonderful year.

Cllr. Tina Combellack
Mayor of Rushcliffe 22/23



Conservation Area Review

The village of Hickling is a Conservation Area - it was last reviewed in 2008.

The Conservation Area is currently being reviewed once again - there will be a formal consultation on the revised document later in the process

but if you wish to discuss the review or make any comments now, please contact:

Tracey Prosser
tjprosser67@gmail.com

MAKE A CHANGE BECOME A COUNCILLOR

MAKE A CHANGE BECOME A COUNCILLOR FOR HICKLING PARISH COUNCIL

- Are you passionate about your community?
- Do you want to help make a long-lasting change?
- Do you have innovative ideas for the council?
- Do you have concerns about a specific issue and want to do something about it?

If this is you, then we need you. We need people from all backgrounds and experiences. Make a change and become a councillor.

WHAT DO LOCAL COUNCILS AND COUNCILLORS DO?

Local (parish and town) councils and councillors make a massive difference to local people's quality of life. They are passionate about their communities and seek to make a change to help improve their residents' lives. Parish Councillors need to be capable, enthusiastic, and engaged to reflect their communities. It is important to be a team player and to be willing to take an active role within the Parish Council.

Local councils run numerous services, depending on the size of the council. Many you will see day-to-day, but some are less known. These include introducing solar panels, setting up dementia-friendly groups, creating neighbourhood plans, managing allotments and open spaces, maintaining footpaths, public seating, and litter bins.

In order to become a Parish Councillor you will need to meet one of the following criteria:

- Be a local government elector of the Parish (registered to vote).
- Have, during the whole for the 12 months preceding the day on which he/she was nominated as a councillor, occupied as tenant or owner, any land or other premises in the Parish.
- His/her principal or only place of work in the 12 months preceding the day on which he/she is nominated as a councillor has been in the area of the Parish.
- Have resided either in the Parish or within three miles thereof during the whole of the 12 months preceding the day on which he/she is nominated as a candidate.

There are certain disqualifications of which the main are:

- Bankruptcy.
- Having been sentenced to a term of imprisonment of not less than three months during the five years preceding the election.
- Being disqualified under any enactment to corrupt or illegal practices.

As it is an Election year, if you wish to become a Parish Councillor you need to complete the Nomination Form and return it to the Election Office at Rushcliffe Borough Council by 4pm on the 4th April.

Please be aware that nomination forms need to be submitted to the District/Borough Elections office after they display their Election Notices on the 20th March and before 4pm on 4th April. Also, please note that an appointment needs to be booked at the Borough Elections office to drop off any nomination forms. For more information please visit [MAKE A CHANGE \(nalc.gov.uk\)](https://www.nalc.gov.uk) for nomination papers visit <https://www.electoralcommission.org.uk/i-am-a-candidate-or-agent/local-elections-england>



Trees for people, a home for wildlife

It's your land, do something amazing with it.
Plant a wood, leave your mark, and play your part
in protecting and improving our environment.

The Greenwood Community Forest and Sherwood Forest Trust are local experts in woodland creation. We can offer landowners grants to cover up to 100% of tree planting costs and 15 years of maintenance payments as well as free expert advice and support throughout the planning, funding and planting process.

Get in touch today
greenwoodforest.org/grow-your-roots



Grow Your Roots

Agri
Department
for Environment
Food & Rural Affairs

Greenwood

England Trees Action Plan
Delivered through the Nature for Climate Fund

Plant a lasting legacy on your land

Do you want to leave a positive lasting impact on your land by planting trees? If so, Trees for Climate will give you the tools to put down roots in your local area that will last for generations. Your trees will stand as a positive legacy for a brighter future, a gift to the environment on behalf of you family. It will become a place for future generations to enjoy and a home for wildlife. And by planting trees, you will be making a clear sign that you're playing your part in addressing our changing climate. As well as grants that cover up to 100% of costs and 15 years of maintenance payments, the

Greenwood Community Forest Team is here to provide expert advice and as much support as you need throughout the planning, funding, and planting process. You can use the funds to plant a new wooded area with just a handful of trees to dense forests. Get in touch today and transform your land with trees

The Trees for Climate programme led by England's Community Forests is helping landowners to plant more trees. Greenwood Community Forest, hosted by Nottinghamshire County Council and supported by the Sherwood Forest Trust is delivering Trees for Climate in Nottinghamshire.

Find out more about Trees for Climate in Nottinghamshire via the Greenwood Community Forest website <https://www.greenwoodforest.org.uk/helping-greenwood-to-grow/grow-your-roots>

Parish Council for Hickling & Hickling Pastures.

Summary of minutes from meeting held on March 28th (plus more recent planning decisions). Full Minutes are published on Parish Noticeboards and at <https://hicklingnotts.org/parish-council/>

Raised by parishioners:

- Parishioner mentioned that drain at the bottom of Bridegate Lane was blocked on the North side, clerk will report it, but explained to parishioners that anyone can report it by going onto the Nottingham County Council website for highway issues, when you report to NCC they do ask for the What Three Words location.

Planning:

- 23/00006/NMA:** The Cottage, Main Street. Non-material amendment of planning application 20/03266/FUL allow for changes to roof pitch on east elevation. **Non-material amendment agreed.**
- 22/01907/FUL: (revised)** To retain existing open sided covered area, bin store and permeable surfacing, Old Wharf Tea Rooms Main Street Hickling. **Refuse Permission.**
- 23/00317/LBC** – Old Wharf Tea Rooms: Regularisation and Retention of UPVC Windows and Doors (Retrospective): the Parish Council objected to this application (see full Minutes for detail). Objections included; installed in contravention of previous permissions, UPVC inappropriate on a Listed building in a sensitive location, timber is a more appropriate material and replacements to the UPVC windows and doors should be approved before installation. The application contravenes several sections of the Hickling Neighbourhood Plan and the Conservation Area Appraisal. **Refuse Permission.**
- 23/00599/FUL** - Quorn House Folly Hall Lane Hickling Pastures. Proposed two storey front and side extension and single storey rear extension, extend existing raised rear patio. Existing roof to be replaced and ridge height raised includes 4no. front dormers. Alteration to existing eaves. Alteration of existing front box dormers to ridged dormers. Existing side extension to be demolished. Application of cedar cladding and render. Air source unit to side elevation. **Consultation deadline 18.5.23.**
- 23/00028/CONARE** - Bridge View House Hickling - Rushcliffe Borough Council does not propose to make a tree preservation in this instance and work can be carried out.
- 23/02977/FUL** - Location: Home Farm, Main Street - Description: Convert garage into office including raise roof height and alterations to fenestrations (Retrospective). **Decision Grant Planning Permission.**

Ward Member report:

Cllr Combella reported that the Town and Parish Forum was very well attended and interesting. That the UK SPS fund UK which is over a 3yr period closes on the 19th May, and if you wish to contact Catherine Evans at RBC, she is very helpful - Cllr Green advised he has already booked a meeting with Catherine Evans. Attended a talk from Community Safety RSVCS, however, only Colston Bassett attended the meeting. Fly tipping fines from WISE are approx. £67,000 (3,000 enforcement notices).

Finance & Assets:

- Assets of Community Value:** the application for the Hickling Basin area has been submitted to RBC and landowner consultation is underway. Renewal of the designation for The Plough Inn will be submitted in late May (renewal is due in June).
- Cemetery:** markers for the unconsecrated area will cost approx. £70 – to be sourced and purchased.
- Cemetery Fees: last reviewed in 2017**
- Cllr Prosser had looked at various surrounding parish council owned cemeteries with regard to their fees, Hickling is considerably cheaper. Comparison fees were circulated to councillors prior to the meeting and asked the members to consider what level of increase should be applied to the current fees to bring them in line with other local parishes. Cllr Prosser shared her proposed fees to be introduced from 1st April 2023 & proposed that these fees be adopted by the PC, this was seconded by Cllr Green, and unanimously agreed by all. The revised Schedule of Fees has been published and has been in force from the 1st April, 2023 – it will be reviewed on an annual basis.
- Conservation Area Appraisal – Review:** A draft of a revised CAA has been prepared in collaboration with RBC. Comments and suggestions have been invited from residents and a formal consultation period is expected to begin in June/July before the revised document is considered at Committee (RBC).
- Annual Risk Assessment;** Cllr Prosser and Clerk to carry out at the end of May and end of November.
- Village maintenance contract** awarded – revised specification & tender update - further to the recent tender process, the Parish Council unanimously agreed to award the village maintenance



Hickling Parish Council
currently has two vacancies
YOUR VILLAGE NEEDS YOUR HELP!

Please email:
hicklingparishclerk@gmail.com

contract for 3 years to the successful contractor.

Environment:

- Reed Clearance and the Smite Feeder:** in February this year the CRT very successfully and sensitively carried out reed clearance work from Kinoulton through Hickling into Leicestershire. The object was to clear a 4m wide channel of open water. The vegetation and silt has been placed on the canal banks. Grant funding was secured for this project but would not extend to the cost of removal of spoil.

Cllr Playle liaised with the CRT to ensure that work did not damage the particularly valuable wildlife habitats along the stretch by the Smite aqueduct.

Cllr Playle described a problem which the works has highlighted (he has prepared a detailed report in consultation with experts in the field, explaining the issue, which has been widely circulated and which was discussed at the PC Meeting on 28th March).

Deposits from the reed and silt clearance increase towards and peak at the Smite Feeder. The Feeder is a ditch that takes water from the River Smite to the canal during periods of high rainfall. This water has a high silt and nutrient load which results in high silt deposits onto the canal bed and increased reed growth which itself causes further sedimentation and loss of open water and reduced flows. Recent work to clear the Smite Feeder has resulted in higher flows of water and silt into the canal and increased the problem. The increased reed growth and silt deposits have blocked flow of water downstream towards Hickling and even caused water to flow back upstream causing problems to sensitive habitats.

Cllr Playle explained how water from the Feeder causing silting up and increased reed growth results in less water and less open water in the canal. Most of the water that does enter the canal via the Feeder flows out of the canal at the Dalby Brook sluice before reaching the Basin. This is because the Feeder is an overflow ditch that only runs after high rainfall.

- Grant funding for alleviation projects was discussed.
- Trees:** 3 to 4 newly planted trees have been lost on Bridegate Lane and the second black poplar in the cemetery has failed.
- Verges:** Clerk to write to Quorn Hunt re damage caused by horse boxes parked on verges.
- Air Ambulance/Heliport,** update from Cllr Rowe. Cllr Rowe has met with Dan and Phil (air ambulance) at the Heliport, they felt negative comments from Hickling Pastures, Phil will speak to Air Ambulance pilots re to fly along railway line. Cllr Rowe has also spoken to RBC re the flight path for the Air Ambulance.

Highways & Street Furniture:

- Noticeboard relocation;** funding enquiries are ongoing.

Community Engagement:

- Annual Parish Meeting** – to be held before the 1st June, 2023 and held in Church on May 18th.
- Coronation** – update re. grant funding for plaque(s) on the cemetery gates from Cllr Green. Cllr Combella said that the decision was made by RBC today re the coronation plaque and if these were to be ordered they are £250 per item (£199 plus VAT), supplier is Kate Cox at Radcliffe on Trent. Cllr Lane will speak to parishioner who had said might be able to produce something in the past.

Correspondence: none.

Finance and Account balances: see full Minutes on Parish Noticeboards and online.

Other items: None.

Date of next meetings (tbc): 13th June, 25th July, 29th August, 3rd October, 14th November, 19th December.

YOUR PARISH COUNCIL

The Parish Council is the lowest tier of local government and is made up of representatives living within the local community who have an interest in community matters and who make decisions on behalf of the Parish.

Your Parish Councillors are listed below with their positions of responsibility:

Tracey Prosser: (Vice Chair) plus Finance & Administration & Assets portfolios - tjprosser67@gmail.com

Steve Green: Highways/Street Furniture portfolio, Grant Applications & Snow Warden - steve.j.green@gmail.com

Chris Lamb: Community Engagement portfolio - c.m.lamb@me.com

Peter Playle: Environment and Highways/Street Furniture portfolios plus Snow Warden - peterplayle@hotmail.co.uk

Ivor Rowe: Hickling Pastures, other roles tbc - ivor@rowepeople.net

Vacancy: for two councillors

Your Parish Clerk is Julie Holland and she can be contacted: by email - hicklingparishclerk@gmail.com and by phone – 01949 823902.

The Parish Council is here to help; however, many issues encountered in the Parish, do not fall under the jurisdiction of the Parish Council and you should contact the relevant authority in the first instance to assist you.

PLEASE CONTACT NOTTS COUNTY COUNCIL:
www.nottinghamshire.gov.uk or call 0300 500 8080 - Monday to Friday 8am to 6pm for issues relating to:

Roads & pavements including obstructions and potholes/roadside verges/road gullies or drains/streetlight faults/trees on public land/bus services.

PLEASE CONTACT RUSHCLIFFE BOROUGH COUNCIL: www.rushcliffe.gov.uk or call 0115 9819911 for issues relating to:

Planning
Waste – including fly-tipping
Electoral matters.
Council Tax

If you have an issue and you are unsure of who can help, or a previously reported issue remains unresolved then contact the Parish Clerk; hicklingparishclerk@gmail.com

If you wish to comment on a planning application:

You can comment online by searching for 'Rushcliffe Planning' - go to 'simple search' type in 'Hickling' and scroll to find the application.

Or you can write to:

Planning & Development
Rushcliffe Borough Council
Rushcliffe Arena
Rugby Road
West Bridgford
NOTTINGHAM
NG2 7YG

Always remember to quote the planning reference.

Please copy your comments to the Parish Council and Borough Councillor, Tina Combella so that we can take your views into account in our decisions.

Diary

9th June	WI Day Trip to Chesterfield (see p.19)
13th June	(tbc) Parish Council Meeting—Village Hall—7pm
17th June	Caribbean Evening in aid of Church Funds at Kinoulton VH
29th June	WI Stuart Dixon's Garden at Stoke Bardolph (see p.19)
25th July	Local History evening at The Plough 5pm-8pm—maps and aerial photos
25th July	(tbc) Parish Council Meeting—Village Hall—7pm
9th-10th Sept	Hickling Scarecrow Festival
14th Sept	Historic Lincoln Trip (Local History Group)
29th Sept	Dove Cottage Fashion Show at Waltham-on-the-Wolds
1st Oct	Village Hall Breakfast
3rd oct	(tbc) Parish Council Meeting—Village Hall—7pm
31st Oct	Local History evening at The Plough 5pm-8pm
11th Nov	Dove Cottage Firewalk at Langar Airfield
14th Nov	(tbc) Parish Council Meeting—Village Hall—7pm
19th Dec	(tbc) Parish Council Meeting—Village Hall—7pm
30th Jan	Local History evening at The Plough 5pm-8pm

Every Thursday at 10.30am: Coffee Morning in Church (please check venue during winter months
Beaver Scouts 6-8 years, Tuesday 6.15-7.15pm; Cub Scouts 8-10.5 years, Monday 6.00-7.30pm;
Scouts 10.5-14 years, Monday 7.30-9.00pm; Explorer Scouts 14-18 years, Tuesday 7.30-9.00pm

All at Kinoulton Village Hall

Contact for ALL sections: Susanne Youngson 0788 413 6890 gskkinoulton@gmail.com

~~~~~

## Would you like to support the Hickling Standard with sponsorship?

Printing costs are an ongoing pressure for us but we are committed to delivering a free copy of the newsletter to every household in Hickling & Hickling Pastures.

We estimate that the costs are approx. £5 a year per household – great value for money!!

Please email [a.terry125@btinternet.com](mailto:a.terry125@btinternet.com) if you are interested in making a small (or large!) contribution to our costs; payments can be made by bank transfer & we can include your name in a list of our supporters (or you can remain anonymous, if you prefer).

## & thank you to those of you who already support us;

Hickling Parish Council   Scarecrows Committee   Samworth Foundation  
Peter and Philippa Jacks.   Adam and Donna Taylor   Pauline Chell  
Ann Blades (PeaPod Nursery)   Mr & Mrs A Chambers   Anonymous  
& all of our advertisers.

~~~~~


Village Directory:

150 Club	Liz Vear	822562	Kinoulton School PTF	Sarah Parris	01949 823925
Beavers	Susanne Youngson	07884 136890	Neighbourhood Watch	Tracey Prosser	
Bellringers	Lynn Irving	07388 348341		tiprosser67@gmail.com	
	lynn.irving74@gmail.com		Nottinghamshire Police		
British Legion	Colin Henson	01949 81453		Control Room; non-emergency number	101
Councillors	John Cottee (County)		Parish Council:	Clerk—Julie Holland	01949 823902
	cllr.john.cottee@nottsc.gov.uk			e.mail: hicklingparishclerk@gmail.com	
	Tina Combella (Borough)		Parochial Church Council		
	TCombella@rushcliffe.gov.uk			Priest in Charge	Revd Paul Massey
Cubs	Susanne Youngson	07884 136890		Email: 1revdpaul@gmail.com	Tel: 01159 892223
Film Society	Tim McEwen	822834		Churchwarden	
Gardening Club	Mr B. Baxter	01949 81374		Treasurer	Alex Thomas
	Mrs B. Grundy	01949 81442		Secretary	823420
Good Neighbours	Liz Vear	822562 or 07805 407229			
Scheme	Kay Hand	822612	Scarecrow Committee		
Guides	Alison Popplewell	01949 81604		Karen Buckley (Chair)	07729 768366
Hickling Pre-School	Nick	07950 558608		Sally Jenkins (Secretary)	07971 520711
Hickling Standard	see previous page		Scouts	Susanne Youngson	07884 136890
History Group	Carol Beadle	822195	Table Tennis:	Alison Rowe	- alison@rowepeople.net
	Pauline Chell (fundraising)	822835	Vale Readers	Elizabeth Evans	01949 81501
	Jane Fraser	822845	Village Hall	Barbara McEwen (Chair)	822834
	Gill Bloor	822682		Tim McEwen (sec.)	822834
Kinoulton School	Mr Simon Paramore (head)		Village Choir	John Robinson (treas.)	822762
	01949 81203			Phillipa Jacks (bookings)	823622
	office@kinoulton.notts.sch.uk			Lynn Irving	07388 348341
			Women's Institute	lynn.irving74@gmail.com	
				Lynne Spencer (Secr.)	01159431008
				Carol Beadle (Treas)	01664 822195
				Pauline Chell (Trips)	01664 822835

Hickling Village Newsletter - Committee

Chair; Tim McEwen - tel. 822834 or tmcewen@globalnet.co.uk

Treasurer/Advertising;

Andrew Terry - tel. 822088 or a.terry125@btinternet.com

Jane Fraser - tel. 822845 or frasermjlk@outlook.com

Barbara McEwen - tel. 822834 or barbara.mcewen01@gmail.com

Please get in touch with any of us if you have any comments or suggestions; we would welcome any contributions for future issues - articles, opinions, reports, recipes, poems, brain-teasers - whatever you would like to see in print!

2023 Copy Dates:

Aug/Sept 15.07.23

Oct/Nov 15.09.23

Copy must be received before these dates to guarantee its appearance. Please note that the committee reserve the right to edit or omit any material submitted. Opinions expressed in published articles remain the responsibility of the author. Articles may be published anonymously but the committee does need to have details of authorship before publication. For details of our privacy policy, please ask any member of the committee.

COPY IN ANY FORM IS ALWAYS GRATEFULLY RECEIVED

e-mail address - frasermjlk@outlook.com

Advertising Rates (one advert for one year - 6 issues.)

Front inside cover - £65

Back cover - £80

Quarter page - £30

Half page - £45

Full page - £60

(enclose payment with copy for the advert and give to a committee member before the copy date.)

Charity, Village Events and Personal (wanted/for sale) adverts are FREE.

We are very grateful to everyone who supports the village through placing adverts in the newsletter - you make all the difference!

Hickling Standard - online edition

The Hickling Standard is also available as a pdf (pages now in the right order!) at:
www.hicklingnottsllocalhistory.com/hickling-standard/

~~~~~

*The Hickling Standard is printed by Adlards, The Old School, The Green, Ruddington: 0115 921 4863*