

We would love to welcome you to



*There's loads of reasons for you to come
down this winter...*

**...SOCIALISE WITH FRIENDS -
ENJOY OUR NEW COSY INTERIOR -
PIE DAY EVERY MONDAY & QUIZ
NIGHT EVERY WEDNESDAY -
GUEST ALES AND CRAFT BEERS -
SUNDAY ROASTS - POOL, DARTS &
GAMES - DELICIOUS HOME
COOKED FOOD - LIVE MUSIC &
MORE.**

CALL US ON 01664 822225

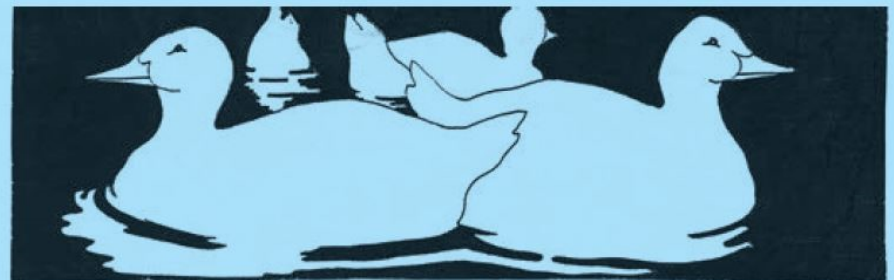
FOLLOW US @PLOUGHINNHICKLING

The

Hickling Standard

Village Newsletter for
Hickling and
Hickling Pastures

Issue 146 Feb/March 2023





“Nurturing the seeds of learning”



Pea Pod Day Nursery is an OUTSTANDING Ofsted rated day nursery, set in the grounds of a small holding on the A606 Melton to Nottingham Road.

Pea pod provides the highest standards of care for babies and children from 6 weeks to 5 years old. Open 7.30am- 6pm, 51 weeks of the year. We have facilities for 29 children, split into three age groups, with each room designed and equipped with that particular age group in mind. Our extensive outdoor provision includes a large secure garden, 2 forest school sites and our own mini farm where the children can play, interact and help to care for the animals!



Where to find us:

Pea Pod Day Nursery
Melton Road
Hickling Pastures
Melton Mowbray
LE14 3QG

Tel: 07577209625

louise@peapod-daynursery.co.uk

Hickling Village Hall Quiz

**Saturday, March
11th starting at
7pm.**



Tickets £5 per person.



Maximum number in
each team is 6.



Many prizes (for
the winning
team, booby
prize, raffle prizes,
etc.).



Please bring your own drinks and snacks.

**Please obtain your tickets from Pauline Chell
(01664 822835).**





SAVE THE DATE!

Summer
Fete

SUNDAY 14TH MAY
11AM - 3PM

IN AID OF
DOVE COTTAGE DAY HOSPICE



@DOVECOTTAGEDAYHOSPICE
WWW.DOVECOTTAGE.ORG



Music



Sign



Storytime

Hi, I'm Cate, I'm a Mum of three, incredibly energetic boys, Alfie (5), Felix (4) and Rory (2) and I run Music and Sign, Storytime on Monday mornings during term time in St Luke's church, Kinoulton. This is a fun community group for anyone with preschool aged children to come along for some singing and story time supported with Makaton signing. Ending with some playtime (for the children) and coffee and chat time for adults.

What is Makaton?



Felix "cheese"

Makaton is a system of symbols and signs that helps communication and is designed to support development of spoken language. I first learnt Makaton for Felix (then 18 months old) as he was getting increasingly frustrated with not being able to communicate what he wanted due to having a speech delay. He quickly learnt many signs, especially anything connected with food (he is signing cheese in the picture!) The whole family got involved and we all had so much fun looking up signs for things we didn't know around the dinner table.

Unlike BSL, Makaton is used in conjunction with spoken language and therefore helps support the development of speech and Felix has dropped most signs now that he can use words. However, we still use signs around the house sometimes and when Rory came along he was able to pick up this method of communication quickly and was signing for 'more' (usually food) before he was 8 months old. Makaton, and its use in early years, is a powerful tool for helping develop communication and is so much fun. When I was first needing to help Felix with his speech I had to do a lot of online searching for things and so I wanted to start a local group to help raise awareness of what is out there and to help and enjoy.



Alfie "tree"

Music and Sign Storytime



Storytime picnic "caterpillar"

At the end of 2021 we were all coming out of lockdowns and I had a young Rory so I was looking for a fun way to, locally, socialise with other young parents in the community. That is how music and sign, story time came to exist. I have to say a big thanks to the lovely team at the Plough Inn who initially gave me a space in which to try out my idea of a sing and sign toddler group and now to St Luke's church in Kinoulton where we now meet. The idea of the group is to both raise awareness of the benefits of using signing at an early age but also to have

somewhere to socialise with local families. It is an informal group where everyone is encouraged to pop in when they can (there's no obligation to come every week) and join in with as much of each session as you want. We have loads of fun each week making some noise with the musical instrument box and singing favourite nursery rhymes as well as learning a few themed signs and having that all important coffee and chat at the end.



Rory "plane"

A GUARANTEED GOOD WATCH:

ARE YOU TIRED OF CONSTANTLY PERUSING THE TV GUIDE FOR SOMETHING TO WATCH OR FED UP WITH BROWSING THE NEVER ENDING CATALOGUE OF SHOWS ON ALL THE STREAMING SERVICES. FEAR NOT.

HERE, I COMPILE A LIST OF BINGE-WORTHY SHOWS FOR A GUARANTEED GOOD WATCH.

BBC IPLAYER TV SHOWS

NOT GOING OUT

AROUND THE WORLD IN 80 DAYS

THE SPLIT

BACK TO LIFE

THE REAL MO FARAH

HOUSE OF MAXWELL

MOTHERLAND

THE PACT

MARIE ANTOINETTE

THE TRAITORS

NETFLIX TV SHOWS

GILMORE GIRLS

ATYPICAL

THE ENGLISH GAME

BREAKING BAD

THE STRANGER

YOUNG SHELDON

THE PLAYLIST

AFTER LIFE

THE CROWN

CUCKOO



Sylvie Cox

The Royal British Legion Vale of Belvoir Branch A Rum Tale



My late brother Colin served in the Royal Navy for 20 years and his favourite alcoholic drink was Pusser's Rum. On retirement from the Navy he arranged for his local inn to keep him supplied with a tot of Pusser's every day. It is only recently that I discovered the story behind the bottle.

In the beginning, the sailor's daily ration of alcohol was meant to be beer, but it did not keep well in the heat of the Caribbean.

By 1655 the Royal Navy's rum ration became standard across the fleet. Every sailor was served each day with half a pint of neat rum by the ship's supply clerk, the purser. Everything issued by the purser, even the rum, became known as "Pusser's", and still is today, hence "Pusser's Rum". It was blended to an Admiralty specification of five rums from Guyana and Trinidad. Its strength was 54.5% by volume.

By 1740, Admiral Edward Vernon (whose nickname was 'Old Grog' because of his grogram cloth coat) ordered that the rum ration be diluted with water and mixed with lime and sugar on account of drunkenness on board. Sailors did not take kindly to the change and named the watered down drink 'grog'. They even earned the nickname of 'limey' due to the lime juice. The tradition lasted 230 years, even through both World Wars, until 'Black Tot Day' 31 July 1970, when the last daily ration, by then just an eighth of a pint, was issued. The drink became available to the public in 1979 when entrepreneur, world sailor and raconteur Charles Tobias decided to resurrect the Pusser's Rum tradition. He acquired the rights and unique blending information from the Admiralty and started bottling Pusser's Rum on Tortola in the British Virgin Islands. A substantial donation from the sale of each bottle still goes to the Royal Navy Sailors' Fund.

Michael Chapman



Squirrel Stores

The biggest "little" shop in the Vale of Belvoir



Delivery service now available
on orders over £20
(excluding cigarettes and tobacco)
Contact us on 822315 or call in
to the shop for more details.

- Greetings cards
- Artisan jams, chutneys, honey etc
- Newspapers and magazines
- Wines, beers, local ales and ciders
- Freshly baked Hambleton bread and produce delivered daily
- Selection of butcher's meat produce and Melton Mowbray pork pies
- Local cheeses
- Large variety of fresh fruit and vegetables (personal weekly fruit delivery and veg boxes available)
- Dry cleaning service
- Refill station
- Fresh sandwiches, sausage rolls, samosas etc

Opening hours:

Monday to Saturday 7am to 7pm

Sunday and Bank Holidays 8am to 1pm

01664 822315

The Sands, Long Clawson

Hickling Local History Group

Presents

AN EVENING WITH PETER LIDDLE



Friday 10th March 2023 at 7.30pm

In Hickling Village Hall

Peter Liddle MBE is the former Senior Archaeologist for Leicestershire and remains an Honorary Visiting Fellow in the School of Archaeology and Ancient History at the University of Leicester. Join him to learn about Roman life in Rutland with emphasis on recent discoveries.

Tickets £5 including tea and biscuits – proceeds will go towards a new information board.

**Purchase on the door or in advance from Pauline Chell
(01664 822835)**



Are You Interested in Local History?

Research
Transcribing
Recording memories
Events

Old photographs
House Deeds
Family records
Businesses/Clubs/Societies

We are looking for all kinds of involvement.

Please contact us:
if you would like to be involved in the local history group or
if you have any projects that you would like to work on or
if you have material that we could add to our collections.

info@hicklingnottlocalhistory.com

Facebook

Speak to: Carol Beadle, Gill & John Bloor, Dorothy Chahal, Pauline Chell, Jane Fraser.

Messages

Please contact us with your messages - we look forward to hearing from you.



No welcome messages for this issue: but if you have recently moved in to Hickling or Hickling Pastures and we haven't said, 'Hello!', we hope that you are enjoying living in the village and your new neighbours look forward to meeting you.

Thank you!

The newsletter costs about £5.50 per household each year and, although some of our costs are covered by advertising, we do also rely very heavily on the Parish Council and your kind donations.

We have recently received very generous donations from Mrs P Chell, Mr & Mrs A Chapman and also an anonymous envelope—we are very grateful to you all - thank you!

John Peet. We are very sorry to share the sad news of John Peet's death and our condolences go to John's family, friends and neighbours. His funeral will be on Thursday 26th January at 10.30am and will be held at Grantham Crematorium. Drinks in The Plough will follow after this.

For anyone who would like to attend either or both, please contact Rebecca at April Cottage.

Joan Kargl. We are very sorry to share the sad news of Joan Kargl's death and our condolences go to Joan's family, friends and neighbours. Her funeral will be held on Monday 30th January at 10am at Wilford Hill Crematorium followed by the wake at The Plough Inn, Hickling. EVERYONE WELCOME to the service or the wake or both. Please contact Sarah on 07974844379 for further details or to indicate if you wish to attend the wake.

Historic Lincoln September 2023 - A Trip from Hickling

Details to follow: enquiries - Pauline Chell

01664 822835

(in aid of the Hickling Local History Group)



JOAN KARGL 16.3.33 – 28.12.22

Joan lived in Hickling for almost 50 years and was often seen walking her dog, Millie, near the canal.



Joan grew up in Westgate-on-Sea near Margate with her brother, Ken, who she was very close to. In her late teens, whilst at a friend's party, she met Geoff who had recently arrived from his home country of Czechoslovakia, and who became the love of her life (much to the initial annoyance of her father).

Joan has always been an independent, strong woman who enjoyed life and told fascinating anecdotes. She worked as a hairdresser in London initially but turned her hand to many different jobs. She sold hats in Debenhams, books in schools, worked as a waitress at Lyons Corner House, did hairdressing in care homes and had a cake stall at Melton Market. She was

stylish, gregarious and fun-loving and liked nothing better than a house full of friends, all smartly dressed up, with glasses chinking. She was a real party girl.

Joan's interests included trips abroad as well as weekends away with friends. She enjoyed entertaining and cooking (and would think nothing of cooking a pig's head or a whole chicken to feed her for the week!). Joan was a naturist, loved the sun and would be out in her beloved garden and swimming pool at any time of day (right up until she was in her eighties!). She has at various times been a member of the local Women's Institute, helped at village events, attended tap dancing lessons and volunteered for worthy causes - but her constant love was for animals.

Joan adored ALL animals and supported many different charities although dogs have been her constant companions throughout her life. There was Dandy, Shep, Diana, Sidney and most recently Millie. Joan loved walking her dogs along the canal and meeting people and would sometimes take a picnic along to the Lengthman's Hut. Even within this last year, whatever the weather, she could be seen sat at the Basin with

Millie chatting to passers-by and watching the wildlife.

Joan lived in Hickling for almost 50 years until her health failed and she returned to live near her niece and nephew in a nursing home late in 2022.

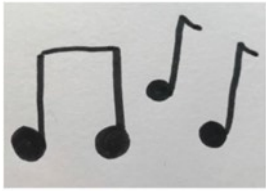
Sadly, Joan died on 28th December in hospital.



She was an amazing lady with a flamboyant character who will be remembered for being funny, strong minded and independent. May she now be at peace.

Joan's funeral will be held on Monday 31st January at 10am at Wilford Hill followed by the wake at The Plough. All welcome. Her ashes will then be buried at a later date alongside Geoff's in Hickling cemetery.

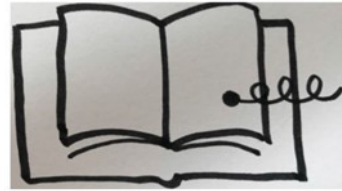




Music



Sign



Storytime

A fun music and story group for babies and preschoolers supported by Makaton signing.

Mondays 10-11am during term time

St Luke's church, Kinoulton.

£3 per family group per session.

for more information send Cate a message at musicsignstorytime@gmail.com or 07886169691

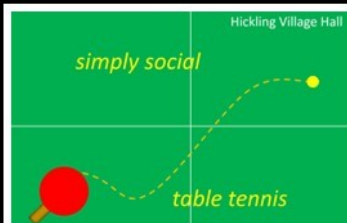


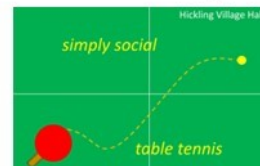
Table Tennis at the Village Hall!

Monday nights 8 – 10pm

It's a great opportunity to get out of the house, be active and keep warm. If we're not having a knock about, then there's always tea to be drunk!

Our ethos of 'simply social' is at the heart of our sessions which offer a friendly knock-about, or a more intensive game, and of course tea and biscuits together with the chance to socialise.

For more information call Alison 822761, or Dave 820262.



SIMPLY CALL 01664 822761 or 01664 820262 FOR AN INFORMATIVE CHAT

*Try our outdoor table at the Wharf in Hickling.
Bats and balls available from The Old Wharf Tearooms*

- Whether your preference is to have a friendly knock-about, or to seek the challenge of an intensive game, our flexible sessions are perfect for you
- Our season runs through the winter from late September to Easter, with a festive break
- Cosy village hall venue with superb facilities and tables for full match play standard
- Comprehensive set up to and quality equipment provided according to ability
- Enjoyable all round exercise in an exceptionally friendly environment, whatever your experience and ability
- Tea and biscuits included, providing an opportunity to relax and socialise



Many thanks to everyone who supported the preschool by buying our Christmas cards or by buying a raffle ticket we raised a fantastic £338. Also, thanks to Chris and Kirsty at The Plough for organising the raffle.



The week before Christmas was an exciting time at pre-school, we made Christmas decorations and rehearsed songs for our Christmas concert, Father Christmas found time to drop into our party and bring everyone an early Christmas present too.

This term we are basing our activities around Chinese New Year as well as the environment and the importance of recycling.

We have had lots of new children enrol at preschool recently and some of our sessions are full, so if you'd like your children to attend in the coming term its worth getting in touch early.

We are also always looking for cereal boxes and Christmas/birthday cards for use in the preschool. We are located in Hickling village hall Monday – Friday 9.15am-3.15pm during term time you can visit our website hicklingpreschool.co.uk for more information on how to get involved or how to register your child.



 **EST 1982**

HEWITT'S AERIALS

HUSBAND & WIFE TEAM

DIGITAL TV AERIALS FITTED & REPAIRED • FREESAT EX-POINTS • TUNING SETUPS • DIAGNOSTICS

FREE QUOTES • ALL AREAS OAPs DISCOUNTS

CONTACT MANDY OR DAVID

07554 387206
01664 820430

Corner Cottage, Clawson Lane, Hickling LE14 3AB

Hickling Village Hall
Strictly Why Not Dance?
At Hickling Village Hall
Main Street, Hickling, LE14 3AQ
Thursdays - 4pm to 6 ish.

Ballroom, Latin. An hour with instructor and time to practice afterwards.
£15 per couple - come and try some new moves.

Exercise the mind and the body and reward yourself with a cup of tea and some homemade cake.

Couples only at the moment.
No Booking required.



Hickling Local History Group



Information Boards Project

Views of Hickling—notecards

FOR SALE

~ 2 Designs ~ £4 per pack ~ Packs of 8 ~
Available from Pauline Chell 01664 822835



VILLAGE BREAKFASTS!

Hickling Village Hall 9 – 11am

Sundays: February 5th/March 5th/April 2nd
Coronation Breakfast: 7th May

Full English Breakfast £5.00
Vegetarian Full English £5.50
Children's portions £3.50
Toast & Muesli also available

Bring your family, meet your friends.
ALL WELCOME

All bookings should be made via Pauline (01664 822835), preferably at least 10 days in advance. It is not essential to book, but it helps with the shopping. We do need to know, in advance, if you have any dietary needs, e.g. gluten free, vegetarian, etc. Remember, it is not necessary to make a booking, you can just turn up and enjoy yourselves!

Thank you.

~~~~~

## HICKLING VILLAGE HALL 150 CLUB

3 draws take place; October, December and February.

Prizes £20 £40 £60 £80 each draw

Thank you to everyone who has supported the 150 Club over many years; any queries or if you would like to join, please contact Liz Vear 07805407229

### WINNERS:

**Village Hall 150 Club - Draw 2**

£80 no. 164 Mr & Mrs Hetherington Hickling  
£60 no. 102 Mr & Mrs Blades Hickling Pastures  
£40 no. 181 Mrs Marler Hickling  
£20 no. 49 Ian Jefferies Hickling



## HOW HICKLING, NOTTINGHAMSHIRE W.I. HAS PUT A SMILE ON THE FACES OF CHILDREN REFUGEES FROM UKRAINE.

On 24<sup>th</sup> February 2022 when Russia invaded Ukraine in a major escalation of the Russia-Ukrainian War which had begun in 2014, members of Hickling WI, like everyone else in Britain received this news in horror. We found it unbelievable that this was happening in the modern age. Although President Vladimir Putin announced this was just a special military operation, the impact on ordinary people especially children soon became apparent. Hickling WI members were shocked at the appalling suffering which the war was creating. By November 2022 over 7.8million people had left Ukraine for safety with Europe's largest refugee crisis since WWII. Like many others, the WI members gave cash generously to the various organisations who were collecting to help the Ukrainian people, but we wondered if we could do more. Children began arriving in England having experienced the terrible suffering of war in their country. They had left behind their books and toys; lost contact with their friends and had seen their homes destroyed.

The Hickling WI heard that about 200 families had found safety in their local area. The WI who is always at the forefront of community activities wondered if they could help the Ukrainian families in any way. One member made the comment that all a child needs as well as love is something to cuddle, something to read and to be able to feel emotionally comfortable. Another member then suggested we could make reading cushions or perhaps comfort quilts to be given to the children refugees –and so a project began!!

The WI initially envisaged making 10 items to give away as Christmas gifts to the locally housed Ukrainian children. It was thought that a reading cushion with a book and a soft toy in the pocket would be something which the children would treasure and also could be

taken back with them when they eventually are able to return home. The more skilful needlewomen in the group embroidered and quilted to create unique and beautiful throws with book/toy pockets.

It soon became apparent that 10 items would not be enough to ensure all local Ukrainian children would receive a gift from the Hickling WI for Christmas. During December the members cut out, sewed and embroidered. The local community

upon hearing about what was happening also rallied around to help by buying cushion infills, material, soft toys and books. By the time the Ukrainian Christmas Day arrived [7<sup>th</sup> January] over 80 items had been made and assembled

In December, the Mayor of Rushcliffe was invited to a presentation evening where some of the cushions and quilts were on display. Some Ukrainian families were invited, and the event turned into a very emotional evening with many tears of both sadness and happiness. A Ukrainian mother spoke about how she and her family would usually spend Christmas and the traditions her family had. To see a 10yr old boy sit and hug his reading cushion was a memory which will stay with us all. To see the joy in a father's eyes as he accepted an embroidered quilt for his newly born child following a traumatic escape from Odessa made all our efforts worthwhile and we all felt very humble.

Hickling WI members attended a community session for Ukrainian family refugees just before Christmas and gave out more gifts including another beautiful quilt for a newborn baby.

On the Eve of the Ukrainian Christmas the Hickling WI members were invited to attend a celebration Ukrainian party. We took along more quilts and cushions to give to the children. The Mayor of Rushcliffe who has become passionate about our project came along with us and saw for herself how overjoyed the children were to receive their gifts. Not only have the Hickling WI members given many Ukrainian children a gift to treasure but they have gained a great deal from doing this project as well. It has been a humbling experience as we can only imagine what some of the children have seen and experienced; it has given the members of the group an opportunity to work together and so much has been learned about Ukrainian culture and way of life. Prior to this most of the group perhaps would not have been able to pinpoint the country of Ukraine on a map. Friendships have also been forged.





# LADY FRIDAY Are you short of TIME?

I could support you when you're working or on holiday

**PETS**  
Regular or occasional dog walking & pet care at your home

**CHILDREN & ELDERLY RELATIVES**  
Meet children from school or take them to their recreational activities\*  
Accompany elderly relatives to appointments or shopping, or whatever

**HOME**  
Water plants, take mail in & generally check all is well

Do not hesitate to ask - I am mature and versatile!  
References available on request, inc DBS\*

Angela Sallis, 6 Melton Road, Long Clawson, LE14 4NR  
01664 822597 [angela\\_sallis@btinternet.com](mailto:angela_sallis@btinternet.com)



# Belvoir Foot Health Clinic

 DipCFHP
  MPSPract
  professional standards authority accredited register

**07714876006**

[belvoirfoothealthclinic.co.uk](http://belvoirfoothealthclinic.co.uk)

**Suite G, Cotgrave Business Hub, Candleby Lane, Cotgrave, Nottinghamshire, NG12 3US.**

## A BENCH TO COMMEMORATE THE CORONATION OF KING CHARLES III

The Hickling WI has recently raised funds to purchase a 4 seater oak bench in commemoration of the Coronation of King Charles III. This bench is being donated to the Parish of Hickling from the Hickling WI members.

As it has been difficult to find a suitable place on grass verges around the village to position the bench, the bench will be placed in Hickling Churchyard. Permission has been granted for this from the Diocese.

The bench will be delivered in time for the Coronation and hopefully will be used by parishioners as well as visitors to Hickling. Previously there has not been a bench in the churchyard and so the WI are delighted to have been able to provide one.



SOMETHING FOR YOUR DIARY

HICKLING W.I. PRESENTS

**SPRING FAYRE**  
**18<sup>TH</sup> MARCH 2023**

10.30 'til 3.30

**KINOULTON VILLAGE HALL**

**FREE ADMISSION**

**OVER 20 STALLS** SELLING A WIDE RANGE  
DELICIOUS REFRESHMENTS AVAILABLE ALL DAY

Hickling WI presents  
**HICKLING VILLAGE HALL**  
on **THURSDAY 16TH FEBRUARY**  
at **7.30pm**

**DO YOU KNOW WHO THE  
MAYOR OF RUSHCLIFFE IS?**

**DO YOU KNOW WHAT THIS ROLE  
ENTAILS?**

Come along and find out as the Mayor has kindly agreed to come and speak to us and answer questions

Tea/coffee/ biscuits will be served

£5 for non WI members

**UNWANTED CHRISTMAS GIFTS  
and ITEMS FROM SPRING  
CLEANING**

The Hickling WI does a lot of charity work for local good causes as well as having a very active group which meet regularly.

Please help them raise funds by letting Pauline Chell [01664 822835] have any unwanted Christmas gifts, food items, or no longer needed - books/ornaments. household goods, jewellery etc which are in good condition for the tombola and other stalls at their WI Spring Fayre on Saturday 18 March.



During Lent, the 40 days (not including Sundays) leading up to Easter, Christians are encouraged to abstain from 'tasty treats', and so we have the tradition of pancake eating on Shrove Tuesday using up the ingredients that combine to make cakes, sweets etc. in preparation for the period that commences the next day when Lent begins on Ash Wednesday. 'Shrove' comes from 'shrive', which roughly translated means seeking forgiveness of wrongdoings by saying sorry and making amends. So, while pancakes are consumed it isn't Pancake Day!



In the process of giving up chocs etc. for about 6 weeks we may well experience benefits for our physical health, with waistbands on trousers becoming less restrictive after the Winter splurge on highly calorific food. However, if the benefits simply begin and end with losing a few pounds around our middle then we will have benefitted from a 'diet' but really missed out on the heart of the season and the opportunity it brings. What we really need to embrace is not a diet but a 'fast'. For me a diet begins and ends with our outer-layers and perhaps some benefit for our inner organs, but a fast allows us to go much deeper and lose a more profound weight that burdens us.

We all carry around the weight of regrets, things we have said or done in our past which we remember from time-to-time and wince in this remembrance. These may well result from ways of living our lives which are not positive, and whilst we recognise them as such find them difficult to address never mind actively change. Lent gives us an opportunity to devote quality time to making amends and to changing our lives for the better. The 'detox' of reducing our sugar consumption therefore becomes not an end in itself but an outward expression of the detoxification of our lives at a deep level. So may I commend a Lenten fast. Something, which if done with sincerity and intentionality, will lead to a truly life changing and enhancing refreshment.

Of course, for those seeking the ultimate renewal the events of Easter lie at the end of Lent, and in engaging with, and embracing, the implications of Easter our lives are enriched and transformed beyond all measure.

Revd Paul

#### Contacts:

Associate Priest (part time)  
Revd Maggie Woodward,  
The Rectory, 41 Main Street,  
Kinoulton, NG12 3EA  
Tel: 01949 81183  
[maggie.woodward511@btinternet.com](mailto:maggie.woodward511@btinternet.com)

#### Readers:

Sheila Hill Tel: 01949 81096  
e-mail: [sahill18@btinternet.com](mailto:sahill18@btinternet.com)  
Robert Jones Tel: 01664 822916  
e-mail:  
[robert.c.jones02@gmail.com](mailto:robert.c.jones02@gmail.com)

Service Dates for St Luke's Churches: Sundays unless designated

| Date                                 | Kinoulton                                                                          | Hickling                                  | Upper Broughton                            |
|--------------------------------------|------------------------------------------------------------------------------------|-------------------------------------------|--------------------------------------------|
| Feb 5                                | 9.00am Holy Communion<br>MW                                                        | 6.30pm Evening Service<br>RCJ             | 11.00am Holy Communion<br>MW               |
| Feb 12                               | 11.00am Morning Prayer<br>SH                                                       | 9.00am Holy Communion<br>tba              | 10.00am Morning Prayer<br>RCJ              |
| Feb 19                               | 9.00am Holy Communion<br>MW                                                        | 10.00am Morning Prayer<br>RCJ             | 11.00am Morning Prayer<br>RCJ              |
| WEDNESDAY<br>22 Feb<br>Ash Wednesday | Mission partnership Service to be held at Cotgrave Church at 7.00pm PM & RCJ       |                                           |                                            |
| Feb 26                               | 11.00am Morning Prayer<br>SH                                                       | 6.30pm Holy Communion<br>PM               | 9.00am Morning Prayer<br>RCJ               |
| March 5                              | 9.00am Holy Communion<br>MW                                                        | 6.30pm Evening Service<br>SH or RCJ       | 11.00am Holy Communion<br>MW               |
| March 12                             | 11.00am Morning Prayer<br>SH or RCJ                                                | 9.00am Holy Communion<br>MW               | 10.00am Morning Prayer<br>RCJ              |
| March 19<br>Mothering Sunday         | 9.00am Holy Communion<br>said service MW<br>11.00am Mothering Sunday<br>Service SH | 11.00am Mothering Sunday<br>Service<br>MW | 11.00am Mothering Sunday<br>Service<br>RCJ |
| March 26<br><i>CLOCKS changed</i>    | 11.00am Morning Prayer<br>RCJ                                                      | 6.30pm Holy Communion<br>MW or PM         | 9.00am Holy Communion<br>MW or PM          |

Rev Maggie Woodward The Rectory, Kinoulton ( 01949 81183  
[maggie.woodward511@btinternet.com](mailto:maggie.woodward511@btinternet.com)



### What an amazing year!

As the group which tries to care for the church life and building, the PCC members have had many financial difficulties since early 2020 due to all the national crises.

In December we discovered that in order to keep our insurance down, and fully insure the roof, we needed to fit a roof alarm. This was to cost over £6000, so that meant fundraising. People responded brilliantly at the Alarm Tea, and with grants, events and donations and having got an instalment payment agreement until December, we paid it off in September. Wow!

We are required to refresh our gift-aided giving every 5 years. 6 years had already passed, hence the Promise Programme in June, which we knew was not good timing. However, while we gained a modest increase in our income, I hope you discovered how the church is funded: it depends on all of us in the Parish of Hickling and the Pastures. Thanks to everyone who joined the scheme or increased donations.

At Scarecrows, we did refreshments in the church and churchyard for the first time, as there was not a marquee at the wharf. Over 2 days we raised £1000, less than at the wharf previously, but still an enormous boost for the church.

The Christmas Fayre at the pub and the concert in church with young musicians and the Village Community Choir were greatly enjoyed and together raised £700. Thanks for all your support.

All we need to do now is to work out how the building can be a warm space while we can't afford to turn the heating on. Ideas? The PCC wishes you all a peaceful 2023.

Alex Thomas (Treasurer of St. Luke's Hickling and Hickling Pastures)



### Weekly Coffee Mornings on Thursdays from 10.30am.

Come and meet your friends, enjoy homemade cakes etc. and a warm welcome. No set charge, just a voluntary donation if you can.

### This is your Village Church.

If you would like to support it in any way please contact:

John or Gill Bloor at  
cesterern@bopenworld.com or

Alex Thomas at alex28thomas@btinternet.com

Could you offer a cake occasionally? Help with cleaning twice a year by rota?

# Daffodils

When the daffodils begin to appear,  
Spring is on its way—even if they have  
to push through a bit of snow  
sometimes!

### From the RHS:

Botanical name: *Narcissus*

Daffodils are one of the most popular and cheery heralds of spring. Planted in September, they spend several months developing roots before the flowers burst forth, usually between February and May. Ideal in containers, borders and lawns, they'll suit almost any garden style and situation.

**Looks:** Daffodils have instantly recognisable flowers with a central trumpet surrounded by six petal-like tepals. Usually yellow or white, the flowers stand on sturdy stems, above slender leaves, reaching from just 20cm (8in) tall up to 50cm (20in), depending on the cultivar.

**Likes** Plant in early September, in fertile, well-drained conditions with plenty of sun. They are happy in containers as well as in the ground, where they do best planted at a depth of three times the height of the bulb.

**Dislikes** Daffodils dislike waterlogged soil, as well as very dry conditions and deep shade. Avoid shallow planting, overcrowding the bulbs, and cutting back the leaves before they die naturally.

**Did you know?** Daffodil bulbs are poisonous, causing a stomach upset if eaten. They are easily and regularly mistaken for onions, so to avoid any confusion always keep stored daffodil bulbs in labelled bags, and don't plant them in vegetable plots.

**Propagating** Daffodils will naturally produce new bulbs over time, expanding the clump gradually. You can also propagate them by: seeds, division, chipping the bulbs..

**Daffodil blindness** Newly planted daffodils usually grow and flower well, but in subsequent years flowering may be reduced or fail completely, although leaves are healthy and numerous. Daffodils that come up with foliage but no flowers are referred to as 'blind'. This condition may be due to the growing conditions or pests and diseases. It can be remedied in several ways depending on the cause. Some tips: Flowers should be removed or pinched off (deadheaded) as they fade; Avoid tidying up the foliage by tying the leaves into a knot, leave them to die down naturally; After flowering, leave a period of at least six weeks before leaves are removed or mown; In dry conditions after flowering, water thoroughly until the foliage shows signs of dying down naturally.

(for more info, go to: [www.rhs.org.uk/plants/daffodils/growing-guide](http://www.rhs.org.uk/plants/daffodils/growing-guide))





# Easy Vegan Banana Bread

## Ingredients

- 210 g self-raising flour
- 75 g soft brown sugar
- 75 ml neutral flavored oil/vegan butter at room temperature
- 3-4 overripe bananas, mashed
- 60 ml almond milk
- 1 teaspoon vanilla extract (optional)
- 100 g chocolate chips (optional)
- 1 teaspoon cinnamon (optional)

## Method

1. Preheat oven to 180 fan. Grease your loaf tin.
2. In a mixing bowl, mash the bananas, add oil and vanilla extract, mix again. Add the flour and sugar then mix well. If mixture seems too thick, add the milk.
3. Pour batter into the tin. Bake for about 50 min – an hour. You can do the toothpick test in the center of the loaf, if it comes out clean it is ready. Remove from oven and let cool for 10 min before slicing.

**‘She wore her yellow sun-bonnet, She wore her greenest gown; She turned to the south wind, And curtsied up and down..’**

From Daffodowndilly by A. A. Milne, 1924 (When We Were Very Young)

& from plant-lady, sarahraven.com

“We get the word 'Narcissus' from Greek mythology. A nymph called Echo fell in love with a young Greek named Narcissus, but Narcissus told her to leave him alone. Heartbroken, she lived alone until nothing but an echo of her remained. Nemesis, the God of revenge, heard the story and lured Narcissus to a pool. Narcissus, who was very handsome and quite taken with himself, saw his reflection in the pool and, as he leaned over to see better, fell in and drowned. He turned into the flower.

“European heritage: Narcissus species are found in a variety of habitats in Europe and North Africa, ranging from sea level to subalpine meadows, woodlands and rocky places. Spain hosts the greatest variety of species, but they can also be found in Morocco, Portugal, western France, Italy, and other countries.

“Daffodils were introduced into gardens in about 300BC. The Greek botanist and philosopher Theophrastus listed and described many of the earliest known kinds of narcissus in his nine-volume 'Enquiry into Plants'. Daffodils were brought to Britain by the Romans who thought that the sap from daffodils had healing powers. Actually the sap contains crystals that can irritate the skin.”

## Dorothy Wordsworth

Many of us are familiar with William Wordsworth's 'Host of Golden Daffodils' but his sister Dorothy also wrote about the same vision in her journal in 1802:

"I never saw daffodils so beautiful they grew among mossy stones about and about them, some rested their heads upon these stones as on a pillow for weariness and the rest tossed and reeled and danced and seemed as if they verily laughed with the wind that blew upon them over the lake, they looked so gay ever glancing ever changing. The wind blew directly over the lake to them. There was here and there a little knot and a few stragglers a few yards higher up but they were so few as not to disturb the simplicity and unity and life of that one busy highway."

Dorothy was a keen observer of nature and a prolific (& poetic) diarist; William Wordsworth frequently borrowed from her journals and two years after this one, he wrote his famous daffodils poem.







The Basin, Main St, Hickling  
 Melton Mowbray, LE14 3AH  
 01664 820448  
 relax@theoldwharf.co.uk  
 www.theoldwharf.co.uk

*Time to relax and unwind*

TEAROOM OPEN SEVEN DAYS A WEEK FROM 9.00 AM - 4.00PM

Please note the kitchen closes at 3.15pm and last drinks orders are at 3.45pm



Find us on Facebook

**WILLIAM  
HERCOCK**

FOR ALL YOUR BUILDING  
AND DIY SUPPLIES

SLABS ❖ AGGREGATES  
 WALLING ❖ CEMENT  
 BRICKS ❖ BLOCKS  
 ROOFING ❖ FENCING  
 ANY AMOUNTS CATERED FOR



**FULL RANGE  
COAL &  
SMOKELESS FUEL**  
 for delivery  
or collection

**MON - FRI: 7.30am - 5.00pm / SAT: 8.00am - 12.30pm**

The Depot Airfield  
 Dalby Road  
 Melton Mowbray

Tel: 01664 500947  
 Fax: 01664 410650

## THE MAYOR of RUSCHLIFFE RAISING AWARENESS

During the past year I have had the opportunity to meet volunteer groups from all walks of life. which has been a very grounding experience.

### UKRAINE

Whilst, not one of my Mayoral Charities, I have been doing whatever I can to help raise awareness and funds for the Ukrainian refugees who have been homed in Rushcliffe. To date Rushcliffe has 160 sponsor properties housing 307 Ukranian guests, significantly the highest number in Nottinghamshire.

I have attended numerous events, flag raising, sponsorship, presentations, coffee mornings, awards ceremonies, carol services and Christmas parties to help these families feel safe and welcome.



This is **MORTAAMKA** a good luck doll given to me at a Ukrainian Christmas Day party. It is made by singing whilst wrapping material to make the doll.

I now know a little more about Ukrainian life and culture and would like to share words written by Viktoriia Tkachenko to explain their **Christmas in Ukraine**.

*"Traditionally Christmas in Ukraine starts on January 6<sup>th</sup> (Christmas Eve in Julian Calendar)*

*It last until Feast of Epiphany on January*

*19. At the same time more and more Ukrainians celebrate Christmas according to Gregorian calendar on December 25<sup>th</sup>. In 2022 approx 70% of Ukrainian people supported the change. Since 2017 both Dec 25<sup>th</sup> and Jan 7<sup>th</sup> are the official state holidays.*

*Christmas Eve (Holy Evening) is marked by traditional family gathering so called **Svyata Vecherya** (Holy Dinner) Its very popular in Ukrain to visit God parents this day and sing Christmas carols in their houses. The festivities usually start with the appearance of the first star in the sky.*

*The table should be served with 12 disches which symbolize 12 apostles. These dishes are dairy free and without meat. The main disch of the venign is **Kutia** (boiled wheat or rice with poppy seeds, raisins and honey.) The main drink is **Uzvar** (boiled dried fruit like pears, applies, plums and cherries). The main decoration is **Didukh**. Didukh has many names: straw talisman, **dido**, **sip-rai kiliada** **didochok** and **koilidn**.*

*Traditionally the sheaf was made from the last stalk of wheat harvested during the year. It may include wheat, flax, oats & rye.*

*According to biblical parable, Jesus Christ was born in a stable in the cold season. When Joseph saw a crack in the wall, he closed it with a sheaf, so it became warmer in the stable. Thus the tradition to put a festive sheaf in the house appeared.*





# STEVEN M. DAW

## PLUMBING, HEATING and GAS SERVICES

Plumbing work – repairs; Central heating and boiler installations; Boiler servicing; Central heating power flushing; Bathroom design and installation

Over 30 years experience

Based in the Vale of Belvoir

Tel: 01664 822648 - Mobile: 07860 285031

Email: [stevendaw@btinternet.com](mailto:stevendaw@btinternet.com)

[www.stevendaw.com](http://www.stevendaw.com)



**HUSBAND & WIFE TEAM**

**DIGITAL TV AERIALS FITTED**

**& REPAIRED • FREESAT**

**EX-POINTS • TUNING**

**SETUPS • DIAGNOSTICS**

**FREE QUOTES • ALL AREAS**

**OAPs DISCOUNTS**

CONTACT MANDY OR DAVID

**07554 387206**

**01664 820430**

Corner Cottage, Clawson Lane, Hickling LE14 3AB

## A.R. PEET LIMITED

**Specialist Retailer of  
Wood, Gas, Electric and  
Multifuel Stoves**

Tel: 01664 822397

[www.arpeetstoves.co.uk](http://www.arpeetstoves.co.uk)

[info@arpeetstoves.co.uk](mailto:info@arpeetstoves.co.uk)

**Home Farm  
Main Street  
Hickling**

Christmas songs are very important part of the shole holiday season. In Ukraine we have different types of Christmas songs: *Kiliadky* (from the word Calendar) these songs are the Christmas. And we also have *Shchedrivky* (from the Ukrainian word Generosity) for so called *Generous Evening 13<sup>th</sup> January*".

### THE FRIARY

On Christmas Day I helped serve lunch to the Homeless at the Friary in West Bridgford and was able to talk to some of the guests and learn their heart rending stories.

Anne Bremner has run the shelter for 34 years and is always looking for volunteers. She also needs canned and packeted food, clothing and household items [www.the-friary.org.uk](http://www.the-friary.org.uk)

**CHARITIES that help our Health  
Service providers and NHS through  
donation and volunteer services.**

**My own Mayoral Charities are the:**



**Grantham Canal Water Restoration Group** where our concerns are the restoring and maintenance of the very valued water in the Nottingham to Grantham Canal. This water has proved a balm for people particularly during the Covid pandemic providing a soothing

mental release whilst taking physical exercise - doctors are now 'Blue prescribing', in some small way assisting relieve the strain on the GP surgeries and NHS. Funding this group, therefore, is very important to increase their powers to access repair equipment, reed clearance and transport to clear the water ways and stop leaks, additionally to help lobby for the reclassification of the Canal as an environmental and leisure corridor. Reclassification would mean an Act of Parliament but would result in greater access to vital Government assistance.



**The Lincs/Notts Air Ambulance**, my other chosen charity, is another organisation so vital in saving lives. They aid the regular ambulance service but receive no Government or tax payer funding. They operate 24/7 giving that vital life saving assistance - all through public donation.

**On 14<sup>th</sup> May I shall be abseiling down Kings Mill viaduct for my charities and hope to raise much needed funds through sponsorship.**

The Air Ambulance and the Hospitals, also receive vital help from the **Blood Bikers**, who I met at the Hickling Scarecrow festival. **Will your next journey save a life**, theirs could. The Bikers transport blood products, patient samples, medical files, frozen human breast milk for premature babies and much more, FREE OF CHARGE for the NHS. They also provide the Air Ambulance with blood supplies as the ambucopters are now equipped to give transfusions in flight. Once again this is all through public donation. The bikers want to expand their services to cover every NHS facility in Nottinghamshire, like the Air Ambulance, 24hrs a day, 7 days a week. Both these charities are suffering due to the increase in fuel prices.





Tree Felling  
Lopping,  
Pruning,  
Ground  
Clearance,  
Tree Surgery,  
Fencing,  
Planting,  
Logs,  
Wood  
Chipping,  
Hedges  
Maintained.

Fully Insured

Tel. 01664-822471



**Keith Wadkin & Son**  
Tree Specialist  
Hickling  
Melton Mowbray, Leics.  
LE14 3AQ

Established 1959

I know there are many more charities out there helping the NHS in their own way. We must continue to donate however small and volunteer our services if we are to maintain our **NHS** and our thriving communities.

**To donate to the Blood Bikers or offer assistance - currently looking for Bikers and phone co-ordinators (so you don't necessarily have to be able to ride a bike)**

<https://www.nottsbb.org/volunteering>

**To donate to the Mayor's Charities: Rushcliffe Borough Council 403519 AC No 01245562 ref 522205219CA**

## HAPPY NEW YEAR TO YOU ALL - 2023

Nevile & Langar Ward News for Hickling, Upper Broughton, Kinoulton, Hickling Pastures, Colston Bassett, Langar and Owthorpe.

**From Cllr. Tina Combella**

2022 was a very eventful year for many reasons, hopefully we shall be moving into calmer waters this year

### COMMUNITY CAFÉ, BREAKFAST AND COFFEE

It's good to get together over a hot cup of coffee and piece of cake to chat. Our villages always offer these opportunities.

Hickling coffee Thursday mornings in the Church and Breakfast - 1<sup>st</sup> Sunday in the month (but you have to book it's so popular). Kinoulton coffee morning together with the post office on Wednesday mornings in the church, Sadly the Vale Market Café at Langar is on hold until the new village hall is built. Look out for news and opening dates in your village magazine

### POT HOLES

A never ending battle. Can I ask residents to report these as they appear, onto the County Council/Highway website. It is not possible for officers to inspect all roads daily. We need to keep on top of these road conditions

### REACH RUSHCLIFFE

The Reach Rushcliffe initiative helps tackle social isolation and loneliness throughout the Borough helping fund projects such as the Ruddington Pantry. The pantry provides surplus food from local shops, allotments and food outlets, that would otherwise be thrown away, reducing food miles and supporting the community. The pantry opens twice a week and whilst offering a source of good wholesome food provides social interaction, coffee and toast in a warm environment. If you need funding for a community group then let me know

### TREES

**My favourite topic.** I am asking farmers, landowners and residents to help with the conservation of our very valuable trees. Over the years many of our native trees have become overwhelmed by Ivy. Whilst Ivy is a wildlife habitat it needs control in order to maintain the health of the trees. It is possible to prevent the Ivy from growing into the canopy, at the base or further up the trunk. If trees



**TIME  
FOR  
POOCH**

Is your dog starting to slow down and show signs of stiffness?  
Does pooch suffer with arthritis and compromised joints through  
hip/elbow dysplasia

If so contact me to discuss how massage can help

 [Katy@timeforpooch.co.uk](mailto:Katy@timeforpooch.co.uk) 

 07899 848 449 

 [www.timeforpooch.co.uk](http://www.timeforpooch.co.uk) 

Helping dogs with their mobility and movement

Follow us on facebook





# HANWELL WINE ESTATE

[www.hanwellwine.co.uk](http://www.hanwellwine.co.uk)

Award-winning English Wine from Nottinghamshire family vineyards est. 1975

**Hiring!**  
See web for details

- **Vineyard Experience Vouchers** for vineyard tour and wine tasting: Rated 5-star in customer reviews, vineyard tour and taste 6 wines, 2-hours. Gift packages from £25
- Celebrate: birthday, anniversary, wedding, hen-do
- Traditional method English Sparkling
- Still White, Rosé, Cherry & Mead
- Business meeting room, quiet desk for a day
- Wine shop open Fri-Sun 11-4pm in the barn
- DIY wine tasting and trail



## Rural Antics - Art, Craft and Skills Workshops

- |     |                                                                                                                                                                                                                            |
|-----|----------------------------------------------------------------------------------------------------------------------------------------------------------------------------------------------------------------------------|
| Feb | Silk painting, Macrame wall hanger, Stained glass, Gel plate, Mosaic steppingstone, Oil painting, Cake piping, Pencil drawing, Wool weaving, Watercolour painting, Earring crafting, Stacking ring, Felt bowls with Rachel |
| Mar | Willow weaving, Wire wrapping, Quentin Blake style drawing, Glass painting, Silver Clay, Stacking ring making, Acrylic Landscape painting, Leather stool making, Bentwood chair making, Mohair bear sewing,                |
| Apr | Silver bangle making, Easter chocolate experience, Photography walk, Nettle foraging and open fire cooking, Mixed media art, Sew the Hanwell hare!                                                                         |



**Full details and bookings online**

HANWELL WINE ESTATE Hickling Pastures, South Notts, LE14 3QG

[hello@hanwellwine.co.uk](mailto:hello@hanwellwine.co.uk) Tel: 01949 81393 [www.hanwellwine.co.uk](http://www.hanwellwine.co.uk)

are lost in hedgerows these ought to be replaced. There are grants and subsidies available plus the Rushcliffe Tree Scheme and Woodland Trust.

### COMMUNITY POLICING

I attended the RCVSG Rushcliffe South Villages Community Safety Group meeting recently along with many representatives from the parishes and villages. We have moved on from just being a Neighbourhood Watch group to involving representatives from the Parish Councils. This means we are covering all Rushcliffe south villages.

We received a report from the Police showing, in general, we remain a low crime area. With regard to Rural Crime, a Rural Crime officer has been appointed in the North and we are lobbying for one for the South.

A Community Road Safety Scheme has been launched to help communities monitor speeding traffic. Parish Councils will be looking for volunteers and will need to contribute towards the cost of safety equipment etc. Full training and risk assessment will be given.

### SEWAGE INFRASTRUCTURE & DISCHARGE in RUSHCLIFFE

I organised this scrutiny in Council to provide possible solutions to the following which may be needed to address issues:

Additional planning controls

Improved consultee response to planning applications regarding sewage infrastructure

Lobbying government for amended legislation

Amendments to existing policies

More rigorous enforcement procedures

Consideration of apportioning s 106 monies to improvement of sewage infrastructure.

### UKRAINE

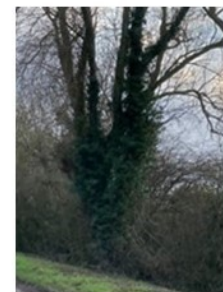
I have attended many Ukrainian events but nothing so inspiring as the Hickling WI events for Ukrainian children living in Rushcliffe. These children will have experienced a very different Christmas away from their extended families in Ukraine. The WI members made 80 quilted reading pillows and toys and quilts to give to the children in Hickling, Sutton, Bonnington, West Bridgford and Keyworth.

To date Rushcliffe has 160 sponsor properties housing 307 Ukrainian guests, significantly the highest number in Nottinghamshire. There is more information on Ukraine in the Mayors roundup item.

**Stay warm and healthy**

**Cllr. Tina Combella**

[Cllr.tcombella@rushcliffe.gov.uk](mailto:Cllr.tcombella@rushcliffe.gov.uk)





## Parish Council for Hickling & Hickling Pastures.

Summary of minutes from meetings held on 1<sup>st</sup> & 6<sup>th</sup> December 2022  
(10<sup>th</sup> January 2023 draft Minutes will be published on Parish  
Noticeboards and at <https://hicklingnotts.org/parish-council/>)

**(1/12/22): Co-option of New Councillor** - the co-option of Ivor Rowe, Hickling Pastures was proposed by Cllr Playle and seconded by Cllr Green. New Cllr Rowe has resided in Hickling Pastures for the last 11

years, is a Chartered Engineer in the medical device sector and is looking forward to representing the parishioners in Hickling Pastures with particular regard to Waring Waste, the heliport and helicopter traffic and road safety on the A606.

### Raised by parishioners:

- (1/12/22) Responses to the parish's questions posed to Venari on 25th October had been received – councillors advised that these had been collated and posted on the village website, noticeboards and social media.
- (1/12/22) Parishioners asked the Parish Council to object to a retrospective planning application at The Old Wharf Tearooms. They raised a number of issues, including: the business has outgrown its location; additional seating, additional car parking and the new bin store represent visual clutter in what was originally a peaceful, tranquil village heritage asset and open green space; increased traffic and congestion; location unable to cope with the 190 covers advertised; not in keeping with the Conservation Area; road safety of great concern and is an accident waiting to happen, considering the number of vehicles, dogs, children, wildlife, farm vehicles, delivery vehicles; impact on residential amenity of neighbours; loss of grassed areas around the building; inappropriate levels of advertising and posters; no benefit to the community; that the applicant must be prevented from 'getting away with it' by proceeding with alterations and additions to the building and site without authority or permission; residents unable to park outside their own houses; villagers avoid the area meaning they have lost this amenity; impact on farmers (one resident recounted an occasion recently where one of the village's resident farmers could not get his machinery through the traffic cluttered around the basin, as the road was clogged and insufficient width available to drive his vehicle safely through, and so had parked in a nearby field until the traffic had dissipated once the tea rooms had closed for the day); existing car park is congested and difficult to manage forcing customers on to Main Street.
- (6/12/22) Parishioner requested further information about the application to extend the area covered by the Asset of Community Value designation at the Wharf and requested confirmation that it would not be extended to include the AE Faulks yard.
- (10/1/23) A Parishioner asked Councillors to consider supporting the Hickling Standard Newsletter with a grant of £500 a year – details were given about existing sources of funding, costs and the newsletter's value to the community. To be discussed further at the meeting 24/1/23

### Planning:

#### 22/01907/FUL Old Wharf Tearooms (retrospective):

(26/11/22) The Parish Council circulated a notice via the Parish website making available a Report and Summary document (referred to, below). These documents were produced following concerns raised by parishioners with regard to recent work that had been carried out to the car park at The Old Wharf Tea Rooms, Hickling and the further reduction in green space at the Wharf.

(1/12/22) During the public session, Councillors commented that the original application for a small café and bicycle repair shop had been supported by villagers but the exponential growth and metamorphosis into a 190 cover tea rooms with the constant overspill of traffic onto Main Street causing congestion and safety concerns to residents, visitors, wildlife, road users could not be tolerated any longer. They had recently asked that Rushcliffe Borough Council carry out a full, detailed planning review and that no further applications be validated by planning officers until all outstanding, unauthorised work had been fully investigated and enforcement action taken. Rushcliffe Borough Council had responded that they could not impose a blanket ban on



### Hickling Pastures - West Bridgford

☐ Show all stops

|                                                   |       |       |       |
|---------------------------------------------------|-------|-------|-------|
| Hickling Pastures Melton Road (SE-bound)          | 09:25 | 11:03 | 13:24 |
| Upper Broughton, opp Chapel Lane                  | 09:30 | 11:05 | 13:27 |
| Hickling, opp Harles Acres                        | 09:35 | 11:10 | 13:32 |
| Kinoulton, adj Hickling Lane                      | 09:40 | 11:15 | 13:37 |
| Kinoulton Lane (W-bound)                          | 09:43 | 11:20 | 13:42 |
| Stanton on the Wolds Browns Lane (SW-bound)       | 09:50 | 11:25 | 13:47 |
| Keyworth, adj The Square                          | 09:55 | 11:30 | 13:52 |
| Plumtree, adj The Griffin                         | 09:59 | 11:34 | 13:56 |
| Normanton on the Wolds Old Melton Road (NW-bound) | 10:03 | 11:38 | 13:59 |
| Tollerton, opp Stanstead Avenue                   | 10:08 | 11:43 | 14:02 |
| Gamston, o/s Morrisons                            | 10:16 | 12:00 | 14:10 |
| West Bridgford Central Avenue (SE-bound)          | 10:22 |       |       |

### West Bridgford - Hickling Pastures

☐ Show all stops

|                                                   |       |       |        |
|---------------------------------------------------|-------|-------|--------|
| West Bridgford Central Avenue (SE-bound)          | 10:25 | 12:50 |        |
| Gamston, o/s Morrisons                            | 10:40 | 13:00 | 14:10  |
| Tollerton, adj Stanstead Avenue                   | 10:44 | 13:06 | 14:14  |
| Normanton on the Wolds Old Melton Road (NW-bound) | 10:47 | 13:09 | 14:20  |
| Plumtree, opp The Griffin                         | 10:50 | 13:12 | 14:24  |
| Keyworth, opp The Square                          | 10:54 | 13:16 | 14:30s |
| Stanton on the Wolds Browns Lane End (E-bound)    | 10:59 | 13:21 | 14:35s |
| Hickling Pastures Melton Road (SE-bound)          | 11:03 | 13:24 | 14:38s |
| Upper Broughton, opp Chapel Lane                  | 11:05 | 13:27 | 14:41s |
| Hickling, opp Harles Acres                        | 11:10 | 13:32 | 14:46s |
| Kinoulton, adj Hickling Lane                      | 11:15 | 13:37 | 14:51  |
| Kinoulton Lane (W-bound)                          | 11:20 | 13:42 | 14:56  |

## Bus Times: Hickling Pastures to West Bridgford

Times marked 's'  
are set down only  
– the bus will only  
stop to drop off  
passengers.

Further  
information can  
be found online  
at: [https://  
bustimes.org/  
services/853-  
hickling-keyworth-  
west-bridgford](https://bustimes.org/services/853-hickling-keyworth-west-bridgford)

*(with thanks to  
the Parish Council  
for providing this  
information)*



**VALE ELECTRICS**  
ELECTRICAL CONTRACTORS

[www.valeelectrics.co.uk](http://www.valeelectrics.co.uk)



applications to be determined on this site and would continue to follow the legislation set by Government on this matter.

Parish Council unanimously agreed to strongly OBJECT to the retrospective application; full grounds for refusal can be found in the Minutes for the meeting and the Rushcliffe Planning Portal.

#### **22/01989/FUL Erection of Roadside Service Area, Hickling Pastures.**

Parish Council unanimously agreed to strongly OBJECT to the application. In submitting its objection, it also noted the huge amount of opposition from parishioners on the planning portal and objections already lodged by Widmerpool PC, Upper Broughton PC, Keyworth PC and Borough Cllr Combella.

Full grounds for refusal can be found in the Minutes for the meeting and the Rushcliffe Planning Portal: they include - it is against all of the principles of the Hickling Parish Neighbourhood Plan; impact on the rural character of the area; impact of vehicular traffic; protecting the countryside; maintaining tranquillity; retaining agricultural links; the development is unnecessary; there are alternative locations which would be more appropriate; applicant's Needs Statement has been found to contain misleading/inaccurate information – for example, access, traffic volume, other facilities being out-dated and lack of existing provision for HGVs; impact on residential amenity; visual impact on rural landscape; cycling safety; criminal activity; waste and litter management; drainage, sewerage and flooding; reduction in living biomass; competition to existing local businesses.

**22/02120/FUL** Development comprising the erection of five new residential dwellings (Use Class C3), and associated landscaping and highways works on Land South of Bridegate Lane, Bridegate Lane, Hickling Pastures. Parish Councillors reported concerns about the height of the proposed houses and the safety of access from Bridegate Lane (full detail - Minutes of Jan 10th).

**22/00545/VAR** Variation of Condition 2 (Approved plans) of planning permission 21/00052/FUL with regards to the design and height of the single-storey rear extension at The Brambles Main Street Hickling. No objection (full detail - Minutes of Jan 10<sup>th</sup>).

**22/02035/FUL** Erection of new two storey dwelling, Willow House, Melton Road, Hickling Pastures - application withdrawn 16th December 2022. Parish Council objected to this application (6/12/22) because of a lack of information and conflict with the Neighbourhood Plan.

**22/01701/FUL** Demolition of bungalow; Erection of 3 no. two storey dwellings; Erection of 1 no. bungalow; Associated landscaping & access works at The Orchard, Long Lane, Hickling – application withdrawn.

**22/01807/FUL** Extension to side of the main dwelling, creating a utility and boot room at Vale House, Main Street, Hickling – permission granted.

#### **Ward Member report (6/12/22):**

- **East Midlands Airport** – consultation on flight paths which the Parish Council should review.
- Cllr Combella encouraged the Parish Council to apply for a **General Community Grant**.
- **WISE** – Cllr Combella reported that an outside contractor had been appointed to deal with fly tipping. There had been recent successes following the introduction of covert cameras for fly tipping 'hot' areas.
- **RSVSCG (Rushcliffe South Village Safety Community Group)** – Cllr Combella had attended a meeting of the group on 5th December. The group liaises with the police and the Borough Council – Cllr Combella recommended that a Parish Councillor should be attending the meetings as they were very useful.
- **Crime Figures** – Cllr Combella noted that the Parish Council had historically received crime figures for reporting to parishioners. She advised that Clerks should access the crime figures before meetings and report back to councillors – the figures are available on the Notts Police website (simply input postcode for figures).
- **Community Road Safety** – if the Parish Council wishes to do a speed survey in the parish, the Community Road Safety Group could provide cameras and hi-vis jackets. This would cost in the region of £500, however, grants for this expenditure could be available from Borough Councillors

or County Councillors.

- **His Majesty the King's Coronation, 6th May 2023** – Cllr Combella asked that Councillors consider how they wished to mark the Coronation. She suggested that wrought iron plaques could be procured by the Parish Council to add to the parish cemetery gates – she had had investigation discussions with a Hickling parishioner, who frequently demonstrated excellence in this field. Councillors agreed to discuss this idea further – Cllr Lane agreed to investigate further with the parishioner mentioned and also with a local company, in Cropwell Bishop, who make commemorative plaques.
- **Farm Watch** – Parishioner, Jo McQuat, spoke to Councillors about Farm Watch, which is concerned with suspicious activity in rural communities and historic reports. She asked that the Parish Council make parishioners aware of Farm Watch on their village website and to encourage parishioners to: Call 999 if parishioners witness an ongoing incident or call 101 with reports of suspicious activity or historic reports of incidents

#### **Finance:**

- (6/12/22) The Boundary Commission for England (BCE) associated paper circulated to the members of the Parish Council prior to the meeting. For information only, to advise that the BCE is redrawing constituency boundaries.
- (6/12/22) Councillor Vacancy – Cllr Prosser advised that Rushcliffe Borough Council had advised that the councillor vacancy on the Parish Council could be filled immediately by co-option and that the vacancy would be advertised on the Parish noticeboards.
- **Finances, 2023/4 Budget & Precept setting were deferred** from the meeting on January 10<sup>th</sup> for discussion at an Extraordinary meeting on Jan 24<sup>th</sup> 2023.

#### **Environment:**

- Roadside verges: Cllr Playle gave an update – proper management of the verges is needed and discussions are underway with Via East Midlands, Notts Wildlife Trust and Notts County Council.
- 10 parishioners helped with the Autumn litter pick on Sunday 30<sup>th</sup> October.

#### **Highways:**

- (10/1/23): **Air Ambulance/Heliport, Hickling Pastures: parishioners' feedback, comments & questions** – item deferred as the invited speakers from the Heliport and the Air Ambulance failed to attend the meeting as expected.

#### **Assets:**

- Noticeboards: Cllr Prosser reported that a noticeboard from Hortor's could be relocated to the village (possibly to the Basin – Cllr Lane to discuss with landowners). The Hickling Pastures noticeboard is dilapidated and a grant of £500 may still be available to repair it.
- Cemetery: options were discussed to mark/identify the unconsecrated area. The cemetery gates will be removed on Dec 9<sup>th</sup> for refurbishment.

#### **Community Engagement:**

- (6/12/22) **Parish Website:** Councillors approved Cllr Green's proposal to proceed with setting up a website through Netwise who specialise in local council websites ( £599 +VAT setting up and annual costs of £330. Community groups to be invited to contribute as previously.
- (10/1/23) **Parish Survey:** all households have now received a copy of the Parish Survey with collection points for replies at The Plough and the Village Hall. It had been hoped to collate completed surveys at the end of December but, unfortunately, no deadline was included on the form.
- (10/1/23) A reasonable number of replies had already been received. The deadline for returning forms was extended to the end of January and notices informing residents of the deadline would be circulated via Facebook and Nextdoor Digest.

#### **Correspondence:**

- (10/1/23) Request received from the Hickling Local History Group for a contribution to the funding of their website – deferred to the meeting on Jan 24th.

**Finance and Account balances:** see full Minutes on Parish Noticeboards and online.

**Other items:** None.

**Date of next meeting, 24<sup>th</sup> January (Extraordinary meeting – 2023/4 Budget & Precept setting).**

- 2023 Meetings: 28th Feb, 28th March, 9th May, 13th June, 25th July, 29th August, 3rd October (tbc)



# YOUR PARISH COUNCIL

The Parish Council is the lowest tier of local government and is made up of representatives living within the local community who have an interest in community matters and who make decisions on behalf of the Parish.

**Your Parish Councillors are listed below with their positions of responsibility:**

**Simon Lane – (Chair) also, Environment** [simon-lane@tiscali.co.uk](mailto:simon-lane@tiscali.co.uk)

**Tracey Prosser – (Deputy Chair) also, Finance & Administration**  
[tjprosser67@gmail.com](mailto:tjprosser67@gmail.com)

**Steve Green - roles tbc** [steve.j.green@gmail.com](mailto:steve.j.green@gmail.com)

**Chris Lamb—roles tbc** [c.m.lamb@me.com](mailto:c.m.lamb@me.com)

**Peter Playle – Environment/Highways & Street Furniture**  
[peterplayle@hotmail.co.uk](mailto:peterplayle@hotmail.co.uk)

**Ivor Rowe—roles tbc** [ivor@rowepeople.net](mailto:ivor@rowepeople.net)

**Your Parish Clerk is Julie Holland and she can be contacted:**

**by email -** [hicklingparishclerk@gmail.com](mailto:hicklingparishclerk@gmail.com)

**by phone – 01949 823902.**

The Parish Council is here to help; however, many issues encountered in the Parish, do not fall under the jurisdiction of the Parish Council and you should contact the relevant authority in the first instance to assist you.

**PLEASE CONTACT NOTTS COUNTY COUNCIL:**  
[www.nottinghamshire.gov.uk](http://www.nottinghamshire.gov.uk) or call 0300 500 8080 - Monday to Friday 8am to 6pm for issues relating to:

Roads & pavements including obstructions and potholes/roadside verges/road gullies or drains/streetlight faults/trees on public land/bus services.

**PLEASE CONTACT RUSHCLIFFE BOROUGH COUNCIL:** [www.rushcliffe.gov.uk](http://www.rushcliffe.gov.uk) or call 0115 9819911 for issues relating to:

Planning  
Waste – including fly-tipping  
Electoral matters.  
Council Tax

If you have an issue and you are unsure of who can help, or a previously reported issue remains unresolved then contact the Parish Clerk.

## If you wish to comment on a planning application:

**You can comment online** by searching for 'Rushcliffe Planning' - go to 'simple search' type in 'Hickling' and scroll to find the application.

**Or you can write to:**  
Planning & Development  
Rushcliffe Borough Council  
Rushcliffe Arena  
Rugby Road  
West Bridgford  
NOTTINGHAM  
NG2 7YG

Always remember to quote the planning reference.

Please copy your comments to the Parish Council and Borough Councillor, Tina Combellack so that we can take your views into account in our decisions.

# Village Directory:

|                            |                                                                                      |                        |                                              |                                                                                          |              |
|----------------------------|--------------------------------------------------------------------------------------|------------------------|----------------------------------------------|------------------------------------------------------------------------------------------|--------------|
| <b>150 Club</b>            | Liz Vear                                                                             | 822562                 | <b>Kinoulton School PTFA</b>                 | Sarah Parris                                                                             | 01949 823925 |
| <b>Beavers</b>             | Susanne Youngson                                                                     | 07884 136890           | <b>Neighbourhood Watch</b>                   | Chris White                                                                              | 822152       |
| <b>Bellringers</b>         | Lynn Irving                                                                          | 07388 348341           | <b>Nottinghamshire Police</b>                |                                                                                          |              |
|                            | <a href="mailto:lynn.irving74@gmail.com">lynn.irving74@gmail.com</a>                 |                        |                                              |                                                                                          |              |
| <b>British Legion</b>      | Colin Henson                                                                         | 01949 81453            | <b>Control Room; non-emergency number</b>    |                                                                                          | 101          |
| <b>Councillors</b>         | John Cottee (County)                                                                 |                        | <b>Parish Council: Clerk—Julie Holland</b>   |                                                                                          | 01949 823902 |
|                            | <a href="mailto:cljr.john.cottee@nottscc.gov.uk">cljr.john.cottee@nottscc.gov.uk</a> |                        | <b>e.mail: hicklingparishclerk@gmail.com</b> |                                                                                          |              |
|                            | Tina Combellack (Borough)                                                            |                        | <b>Parochial Church Council</b>              |                                                                                          |              |
|                            | <a href="mailto:Tcombellack@rushcliffe.gov.uk">Tcombellack@rushcliffe.gov.uk</a>     |                        | Rector                                       | Maggie Woodward                                                                          | 01949 81183  |
| <b>Cricknet Club</b>       | P. Parkes                                                                            | 822370                 |                                              | <a href="mailto:maggie.woodward511@btinternet.com">maggie.woodward511@btinternet.com</a> |              |
| <b>Cubs</b>                | Susanne Youngson                                                                     | 07884 136890           | Churchwarden                                 | John Bloor                                                                               | 822682       |
| <b>Film Society</b>        | Tim McEwen                                                                           | 822834                 |                                              | Gill Bloor                                                                               | 822682       |
| <b>Gardening Club</b>      | Mr B. Baxter                                                                         | 01949 81374            | Treasurer                                    | Alex Thomas                                                                              | 823420       |
|                            | Mrs B. Grundy                                                                        | 01949 81442            | Secretary                                    | Noel Woodward                                                                            | 01949 81183  |
| <b>Good Neighbours</b>     | Liz Vear                                                                             | 822562 or 07805 407229 |                                              | <a href="mailto:noel.woodward902@btinternet.com">noel.woodward902@btinternet.com</a>     |              |
| <b>Scheme</b>              | Kay Hand                                                                             | 822612                 | <b>Scarecrow Committee</b>                   |                                                                                          |              |
| <b>Guides</b>              | Alison Popplewell                                                                    | 01949 81604            |                                              | Karen Buckley (Chair)                                                                    | 07729 768366 |
| <b>Hickling Pre-School</b> | Nick                                                                                 | 07950 558608           |                                              | Sally Jenkins (Secretary)                                                                | 07971 520711 |
| <b>Hickling Standard</b>   | see previous page                                                                    |                        | <b>Scouts</b>                                | Susanne Youngson                                                                         | 07884 136890 |
| <b>History Group</b>       | Carol Beadle                                                                         | 822195                 | <b>Table Tennis: Alison Rowe</b>             | <a href="mailto:alison@rowepeople.net">alison@rowepeople.net</a>                         |              |
|                            | Pauline Chell (fundraising)                                                          | 822835                 | <b>Vale Beaders</b>                          | Elizabeth Evans                                                                          | 01949 81501  |
|                            | Jane Fraser                                                                          | 822845                 | <b>Village Hall</b>                          | Barbara McEwen (Chair)                                                                   | 822834       |
|                            | Gill & John Bloor                                                                    | 822682                 |                                              | Tim McEwen (sec.)                                                                        | 822834       |
| <b>Kinoulton School</b>    | Mr Simon Paramore (head)                                                             |                        | <b>Village Singers</b>                       | John Robinson (treas.)                                                                   | 822762       |
|                            | 01949 81203                                                                          |                        |                                              | Phillipa Jacks (bookings)                                                                | 823622       |
|                            | <a href="mailto:office@kinoulton.notts.sch.uk">office@kinoulton.notts.sch.uk</a>     |                        | <b>Women's Institute</b>                     | Lynn Irving                                                                              | 07388 348341 |
|                            |                                                                                      |                        |                                              | <a href="mailto:lynn.irving74@gmail.com">lynn.irving74@gmail.com</a>                     |              |
|                            |                                                                                      |                        |                                              | Lynne Spencer (Secr.)                                                                    | 01159431008  |
|                            |                                                                                      |                        |                                              | Carol Beadle (Treas)                                                                     | 01664 822195 |
|                            |                                                                                      |                        |                                              | Pauline Chell (Trips)                                                                    | 01664 822835 |



## **Hickling Village Newsletter - Committee**

**Chair; Tim McEwen - tel. 822834 or [tmcewen@globalnet.co.uk](mailto:tmcewen@globalnet.co.uk)**

**Treasurer/Advertising;**

**Andrew Terry - tel. 822088 or [a.terry125@btinternet.com](mailto:a.terry125@btinternet.com)**

**Jane Fraser - tel. 822845 or [frasermjlk@outlook.com](mailto:frasermjlk@outlook.com)**

**Barbara McEwen - tel. 822834 or [barbara.mcewen01@gmail.com](mailto:barbara.mcewen01@gmail.com)**

Please get in touch with any of us if you have any comments or suggestions; we would welcome any contributions for future issues - articles, opinions, reports, recipes, poems, brain-teasers - whatever you would like to see in print!

### **2022 Copy Dates;**

**April/May 15.03.23**

**June/July 15.05.23**

Copy must be received before these dates to guarantee its appearance. Please note that the committee reserve the right to edit or omit any material submitted. Opinions expressed in published articles remain the responsibility of the author. Articles may be published anonymously but the committee does need to have details of authorship before publication. For details of our privacy policy, please ask any member of the committee.

**COPY IN ANY FORM IS ALWAYS GRATEFULLY RECEIVED**

**e-mail address - [frasermjlk@outlook.com](mailto:frasermjlk@outlook.com)**

**Advertising Rates** (one advert for one year - 6 issues.)

Front inside cover - £65      Back cover - £80      Quarter page - £30

Half page - £45      Full page - £60

(enclose payment with copy for the advert and give to a committee member before the copy date.)

**Charity, Village Events and Personal (wanted/for sale) adverts are FREE.**

**We are very grateful to everyone who supports the village through placing adverts in the newsletter - you make all the difference!**

### **Hickling Standard - online edition**

The Hickling Standard is also available as a pdf (pages now in the right order!) at:  
[www.hicklingnottlocalhistory.com/hickling-standard/](http://www.hicklingnottlocalhistory.com/hickling-standard/)

~~~~~

The Hickling Standard is printed by Adlards, The Old School, The Green, Ruddington: 0115 921 4863

Diary

5th Feb	Village Hall Breakfast
16th Feb	WI: Talk by the Mayor of Rushcliffe—7.30pm
28th Feb	Parish Council Meeting—Village Hall—7pm
5th March	Village Hall Breakfast
10th March	Romans in Rutland—local history talk - Village Hall 7.30pm
11th March	Village Hall Quiz—7pm
18th March	WI Spring Fayre—Kinoulton VH 10.30am-3.30pm
28th March	(tbc) Parish Council Meeting—Village Hall—7pm
2nd April	Village Hall Breakfast
18th April	WI daytrip to Thornbridge Hall & gardens and Matlock Bath
6th May	Coronation of King Charles III
7th May	Coronation Breakfast—Village Hall
9th May	(tbc) Parish Council Meeting—Village Hall—7pm
14th May	Dove Cottage Summer Fete—11am-3pm
14th May	Mayor of Rushcliffe—abseiling challenge
16th & 19th May	WI visit to recycling centre
13th June	(tbc) Parish Council Meeting—Village Hall—7pm
(Sept tbc)	Historic Lincoln Trip)

Every Thursday at 10.30am: Coffee Morning in Church (please check venue during winter months)

~~~~~  
Beaver Scouts 6-8 years, Tuesday 6.15-7.15pm; Cub Scouts 8-10.5 years, Monday 6.00-7.30pm;  
Scouts 10.5-14 years, Monday 7.30-9.00pm; Explorer Scouts 14-18 years, Tuesday 7.30-9.00pm  
All at Kinoulton Village Hall

Contact for ALL sections: Susanne Youngson 0788 413 6890 [gslkinoulton@gmail.com](mailto:gslkinoulton@gmail.com)

~~~~~

Would you like to support the Hickling Standard with sponsorship?

Printing costs are an ongoing pressure for us but we are committed to delivering a free copy of the newsletter to every household in Hickling & Hickling Pastures.

We estimate that the costs are approx. £5 a year per household – great value for money!!

Please email a.terry125@btinternet.com if you are interested in making a small (or large!) contribution to our costs; payments can be made by bank transfer & we can include your name in a list of our supporters (or you can remain anonymous, if you prefer).

& thank you to those of you who already support us;

Hickling Parish Council Scarecrows Committee Samworth Foundation

Peter and Philippa Jacks. Adam and Donna Taylor Pauline Chell

Ann Blades (PeaPod Nursery) Mr & Mrs A Chambers Anonymous

& all of our advertisers.

~~~~~