

Plough Inn Presents

MAIN ST, HICKLING, LE14 3AH



CHRISTMAS MARKET

FRI 2ND DEC 4PM - 8PM

& SAT 3RD DEC 11AM - 4PM

*Vintage Clothes – Crafts – Christmas
Decorations – Personalised Gifts – Jewellery
Wooden Gifts – Art – Small Businesses
Handmade soaps – Felt Art – Toys
Mulled Wine – Baked goods – Sweets
Gifts for Men (that like beer) – Wreaths
Christmas Market Street Food
& much much more...*

30+

STALLS



WHERE LIFE MATTERS

The

Hickling Standard

Village Newsletter for
Hickling and
Hickling Pastures

Issue 145 December 2022/January 2023





“Nurturing the seeds of learning”



Pea Pod Day Nursery is an OUTSTANDING Ofsted rated day nursery, set in the grounds of a small holding on the A606 Melton to Nottingham Road.

Pea pod provides the highest standards of care for babies and children from 6 weeks to 5 years old. Open 7.30am- 6pm, 51 weeks of the year. We have facilities for 29 children, split into three age groups, with each room designed and equipped with that particular age group in mind. Our extensive outdoor provision includes a large secure garden, 2 forest school sites and our own mini farm where the children can play, interact and help to care for the animals!



Where to find us:

Pea Pod Day Nursery
Melton Road
Hickling Pastures
Melton Mowbray
LE14 3QG

Tel: 07577209625

louise@peapod-daynursery.co.uk



Scarecrow Presentations 2022

A lovely evening was hosted by The Plough Inn on 4th November with presentations made to the charities benefitting from this

year's Scarecrow Festival. Almost £9,000 was raised over the weekend; £6,000 from the main event and an additional £2,000 at the Village Hall and £1,000 at Church - an exceptional success and many, many thanks to everyone who helped in anyway and to all those who contributed to the funds raised!

The winners of the

Scarecrow Committee were chosen by public vote; First prize (and the cup) went to Jan and Ken for the Black Knight (with flick-of-the-switch blood feature) . Second prize of a knitted Sammy Scarecrow went to Trish & Steve for Lord Charles. Sammy Scarecrow proved so popular that Karen is now knitting a twin for Jan to go with the first prize cup!



CHRISTMAS CAROLS WITH THE SALVATION ARMY -
MINCE PIES - FESTIVE DRINKS



LIGHT UP A LIFE CAROL SERVICE

SUNDAY, 4 DECEMBER, 2-4PM
@ DOVE COTTAGE DAY HOSPICE, CANAL LANE,
STATHERN, LE14 4EX



FREE ENTRY - ALL WELCOME

PLEASE REGISTER YOUR ATTENDANCE: 01949
860303 OR FUNDRAISING@DOVECOTTAGE.ORG

Charities supported by the Scarecrows fundraising this year:

- Maggie's—cancer care charity
- British Legion
- Grantham Canal Water Restoration Group
- Hickling Local History Group
- Hickling Pre-School
- Hickling Standard Newsletter
- Makaton sign language group
- Pablo's Horse Sanctuary
- St. Luke's Parish Church



- Table Tennis Group
- Women's Institute





Festive Fun-draiser December 2022

**Dove Cottage has
partnered with
Treasure Trails to
bring you an
exciting mission!**

The 'White Wings over Belvoir' trail has been created specifically for Dove, and gives families the opportunity to explore the local area from a different perspective. Why not help us raise some money this

festive season and become a Dove detective?

This self-guided treasure hunt will take you around peaceful villages in the Vale, starting at Long Clawson and visiting Hose, Langar, Granby, Belvoir Engine Yard and Eaton before finishing at our tea room – all whilst looking for clues to solve the hunt!

Think you know your local area? This trail will get you spotting things you've never noticed before! A great adventure to enjoy as a family or with friends (including the four-legged ones)!

And what's more, you'll be supporting the wonderful work we do at the same time! Fancy dress is not mandatory to complete the trail but is strongly encouraged...!

Why not get into the festive spirit by wearing a Christmas outfit or accessory, and encourage people to sponsor you to complete your mission! Raise over £25 and we'll send you a festive medal! **

**Trails can be bought from any of our shops or by emailing
fundraising@dovecottage.org Trails are £10, all profits go to Dove Cottage.
Complete your trail before the end of December, and we'll give you a voucher for
one free hot drink plus sweet treats for the kids, to enjoy at our Dove Cottage Tea
Room. ***

* vouchers will be issued for redemption at our Stathern Tea Room before 31 January 2023.

** sponsorship money must be received by Dove Cottage by 31 January 2023 to receive a medal.

The Royal British Legion Vale of Belvoir Branch Remembrance

Our Remembrance Service this year was held at St Luke's Church, Kinoulton, conducted by Rev. Maggie Woodward. There was a very full congregation including Legion members and the Scouts group, commemorating the courage and self-sacrifice of the fallen in both World Wars and recent conflicts. Roger Barratt, a recent newcomer to the village, outlined his army career and spoke of the origins, aims, and activities of Royal British Legion. The church collection raised £294 for the Poppy Appeal. The Roll of Honour for our villages was read by Keith Oxby and, to mark the two-minute silence, the Last Post and Reveille were played by bugler Jim Woolley. Tina Combellack laid a wreath in Church for Rushcliffe Borough Council. Afterwards members of the Legion and Scouts Groups with their Standard Bearers proceeded to the War Memorial. On rejoining the remainder of the congregation there, Last Post and Reveille were again sounded, and wreaths were laid on behalf of the Royal British Legion, Rushcliffe Borough Council, Kinoulton Parish Council and the Scouts. Refreshments were provided at the Village Hall by Kinoulton WI.

On Friday 11th November, Headteacher Simon Paramore, staff and pupils of Kinoulton Primary School gathered in front of the Village War Memorial for their now traditional annual commemoration. After a short address by Barry Roberts, which included reading of the names of the fallen, a one-minute silence was observed. A wreath was laid on behalf of Kinoulton School, by the youngest and oldest schoolchildren.

The Poppy Appeal

The Poppy Appeal was again organised by Norman Evans in Kinoulton and Pauline Chell in Hickling. We are very grateful to all our volunteers collecting in Kinoulton and Hickling, and to you, our donors for your generosity in supporting the many thousands of needy and injured members of the armed forces community.

Michael Chapman



Squirrel Stores

The biggest “little” shop in the Vale of Belvoir



**We are bringing Squirrel
Stores to Hickling!**

Contact us on 822315 or call in
at the shop for more details.

- Greeting cards and gifts
- Artisan jams, chutneys, honey etc
- Newspapers and magazines
- Wines, beers, local ales and ciders
- Freshly baked Hambleton bread and produce delivered daily
- Selection of butcher's meat produce and Melton Mowbray pork pies
- Local cheeses
- Large variety of fresh fruit and vegetables (personal weekly fruit delivery and veg boxes available)
- Dry cleaning service
- Fresh sandwiches, sausage rolls, samosas etc
- Hand tied bouquets

Opening hours:

Monday to Friday 7am to 7pm

Saturday 7am to 5pm

Sunday and Bank Holiday 8am to 1pm

01664 822315

The Sands, Long Clawson

What was it like to be evacuated during WWII?

Once again we are living in a time when too many people are being displaced from their homes by war. Stories from WWII evacuations are beginning to build in our local history studies—and they are amazing! There isn't enough room to do them justice here but you can read more at:

www.hicklingnottsllocalhistory.com/wwii/evacuees/

Formal evacuations to Hickling took place in the summer of 1940 when over 3,500 children from Great Yarmouth and the Norfolk coast were moved up to the Midlands in their school classes and with their teachers.

But there were many informal evacuations, too. As fathers and husbands left to fight, families sought safer places to live with family or friends or simply through networks of people trying to help. We have a great deal more work to do if we are to work out how the Hickling evacuations worked but the 1939 Register shows that, out of the 41 children living in the village at the time, 19 children were living in households where the adults had a different surname—this is a huge proportion. In recent weeks, we have been appealing for information and stories and we are writing them up to the website as they arrive:

- We have two school photographs from 1940 with partial names or just the letter (E) for evacuee—we would like to fill these names in.
- We would like to find out more about the children listed in the 1939 Register.
- There is the story of 2 little girls who were evacuated from Meadow Lane in Nottingham but they were so homesick that they tried to walk home. They did eventually return home, narrowly surviving the bombing of the Meadow Lane dairy which killed 159 people in Nottingham's worst night of the War.



Dorothy Miller who was evacuated to live with the Cox family at Ivy Cottage.

An evacuation story: Field Farm, Hickling Pastures

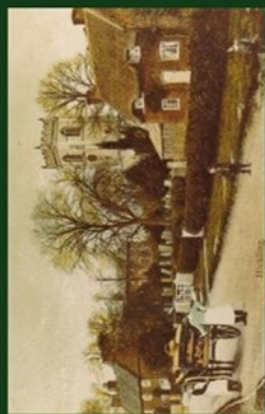
Spotting a page on our website about William Salt (who died during WWI), Avril Thesing contacted us from New Zealand to share her memories of the Salt family, her evacuation to Field Farm and a friendship which has continued for over 75 years. Avril has written her memories down so that they can be read by her grandchildren and we are incredibly grateful to her for offering to share her writings with us, too. The old farmhouse, the orchards, visits to Melton Market, milking, cheese-making, knitting circles, Bill in the shafts of the family trap, leghorn chickens roosting in the apple trees, problems with 3-legged stools; Avril's writing is wonderfully descriptive, gently kind and full of understanding. These pages give us an extraordinary view into wartime England and an almost lost part of our village history – **please go to the website page (above) and enjoy!**





Local History Group
Hickling
Nottinghamshire

www.hicklingnottlocalhistory.com



Are You Interested in Local History?

~~~

Research  
Transcribing  
Recording memories  
Events

~~~

Old photographs
House Deeds
Family records
Businesses/Clubs/Societies

~~~

We are looking for all kinds  
of involvement.

Please contact us:

if you would like to be involved  
in the local history group **or**  
if you have any projects that  
you would like to work on **or**  
if you have material that we  
could add to our collections.

~~~

info@hicklingnottlocalhistory.com

Facebook

Speak to: Carol Beadle, Gill & John
Bloor, Dorothy Chahal, Pauline
Chell, Jane Fraser.

Messages

Please contact us with your
messages - we look forward to
hearing from you.

~~~~~



No welcome messages for this issue: but if you have recently moved in to Hickling or Hickling Pastures and we haven't said, 'Hello!', we hope that you are enjoying living in the village and your new neighbours look forward to meeting you.

~~~~~

CHRISTOPHER MICHAEL THAYNE of Manor Cottage, Hickling Pastures died on 29th September after a short illness. His funeral was at Widmerpool Church on 26th October. Christopher M Thayne was always known by the name 'Mick' and was often referred to as 'Tally Ho Mick'. He was a local man and was always happy following country pursuits and living within a rural community.

Mick was the Secretary of the Local Racing Pigeon Club and much of the success of this club was due to Mick's personality and dedication. His racing pigeons are all being donated to a local school who have obtained funds for a pigeon loft. The pupils will care for, breed, train and race these pigeons.

Mick will be sadly missed, especially by local pigeon fanciers and all the residents living on Hickling Pastures.

~~~~~

**Correction and Apology;** we would like to apologise for mistakenly giving the wrong name in our message to the family of Trevor Whitmore in our last issue. We send you our best wishes and our sincere apologies.

~~~~~

Thank you: All of us who are involved with the Hickling Standard Newsletter and the Hickling Local history Group thank the Scarecrow committee for their very generous donations to our groups from this year's fundraising—**THANK YOU!**

~~~~~

**Hickling Standard Deliveries—Bridegate Lane:** would you like to join our delivery team? We are looking for someone to deliver to the houses at the village end of Bridegate Lane. If you can help, please contact Andrew on 822088 or a.terry125@btinternet.com.

~~~~~

Romans in Rutland including the recent discoveries made (The Roman Villa)

A talk by Peter Liddle

Friday 10th March 2023 - 7.30pm

Hickling Village Hall

Charge £5- including tea/biscuits
tickets from Pauline Chell 01664 822835

Deck the Halls with Boughs of Holly!

Have you ever wondered how certain plants and flowers became associated with Christmas?

Behind all these traditions is the idea that bringing luscious greenery and berries into the home at Christmas time brings life and comfort with them. In this case, it doesn't really matter what type it is but some species have also acquired associations in folklore and superstition.

The Roman Saturnalia seems to the beginning of the tradition of decorating the house with green branches of ivy, holly and pine. It was an extravagantly immoral festival celebrated in December (the last month of the Roman calendar) and looking back to the golden age of the reign of Saturn, the god of sowing and husbandry and whose reign was characterised by peace and plenty. Druids attributed sacred and magical powers to mistletoe (especially from an oak tree). At pagan midwinter festivals it provided protection from sorcery and witchcraft and the folk lore continued into Christmas celebrations; cheerful events, it was feared, attracted the attention of the Evil Eye and the powers of darkness. There is also a Christmas legend that the wood from the cross of the crucifixion was taken from a mistletoe tree which was then so ashamed that it shrivelled to become no more than a parasite on other trees.

The Christmas Carol, The Holly and the Ivy, explains the symbolism of holly. The white flower of the holly tree is linked to the purity of the Virgin Mary whereas the red of

the berries, the prickle of the leaves and the bitterness of the bark are linked to the travails of life and our need for redemption through the sacrifice of Christ on the cross.



Christmass by John Clare.

Christmass is come and every hearth
Makes room to give him welcome now
Een want will dry its tears in mirth
And crown him wi a holly bough
Tho tramping neath a winters sky
Oer snow track paths and rhymey stiles
The huswife sets her spinning bye
And bids him welcome wi her smiles

Each house is swept the day before
And windows stuck wi evergreens
The snow is beesomed from the door
And comfort crowns the cottage scenes
Gilt holly wi its thorny pricks
And yew and box wi berrys small
These deck the unused candlesticks
And pictures hanging by the wall

(...)

"As we search among the vegetable plots for fuel, I pause at the Brussels sprouts. They are beautiful with their tight fists of sprouts bunched up at the stalks and the long-stemmed leaves curving all round the plants. I wonder why so few people remark their beauty. They look like a sculptor's work. The vegetables mature as the flower garden withers. Purple-sprouting broccoli thickens and throws out its rich, blue-green foliage; banked rows of celery thrive in the frosts, each plant encased, for blanching, in newspaper and string. Leeks stand upright in their severe carved folds, rushing up to flower before we are ready to pull them. There is so much to be done in the garden just now. We wonder if we shall manage it before the winter frosts clamp down the earth, making all work impossible.
(Clare Leighton, from *Four Hedges: A Gardener's Chronicle*)



What's green, covered in tinsel and goes ribbet ribbet?

Mistle-toad!

How many letters are in the Christmas alphabet?

Only 25, there's no L!

Who says, 'Oh, Oh, Oh!' at Christmas?

Santa walking backwards ...

Kissing under the Mistletoe (and Christmas Wreathes).

Despite the pagan associations of mistletoe, the British custom of kissing underneath it seems to be purely

Christian. It appears to have begun in the following way: back in C14th Britain, it was traditional at Christmastime to hang a small effigy of the Holy Family just inside the door of the house. This little model was put on a small platform and the platform itself was placed inside a wooden hoop. The hoop was decorated with greenery - the precise plants used had no special significance at this time. All that mattered initially was that they looked fresh and alive in the dead of winter.

The display of the Holy Ffamily was called a Holy Bough and at Christmas the local priest travelled around his parish and blessed each one. Any person visiting a house during the Christmas period had to be embraced as they crossed the threshold. This was done to demonstrate that, in the holy season, everyone was loved in a Christian way. As time passed, the use of effigies was frowned upon as idolatrous and the little model of the Holy Family had to be removed. But old customs die hard and people were reluctant to abandon the decorated hoop altogether. To solve the problem, the Holy Bough was renamed the Holly Bough. The embracing continued even though it was now done under nothing more than hoops decorated with greenery.

In the C16th the ordinary greeting became more effusive and included kissing. Then, about three hundred years ago, a new element was added to the ritual. Every time a visitor to the house was kissed one of the white berries was removed from the sprig of mistletoe that was included among the greenery. When all the berries had gone, the kissing had to stop. This idea was probably introduced to limit what was rapidly becoming an excuse for excessive bouts of less than holy kissing. Its effect, however, was to create a special link between one of the types of greenery—mistletoe—and the act of kissing. Previously, despite its strange history, mistletoe had been just another form of evergreen available at Christmastime. Now, suddenly, it was the 'kissing bough'. As time passed, the hoops were omitted and a simple sprig of mistletoe was all that was left. Hanging by itself in the hallway at Christmas.

(Desmond Morris, *Christmas Watching* (from the *Faber Book of Christmas*))

& If you are late removing the greenery after Christmas:

Ceremony upon Candlemas Eve

Down with the rosemary, and so
Down with the bays and mistletoe;
Down with the holly, ivy all
Wherewith you dressed the Christmas hall;

That so the superstitious find
No one least branch there left behind;
For look, how many leaves there be
Neglected there, maids, trust to me,
So many goblins you shall see.

(Robert Herrick 1591-1674)

Some superstitions also require the greenery to be burnt after removal. Candlemas is 40 days after Christmas Day and marks the day that the baby Jesus is presented at the temple.

Tree Felling
Lopping,
Pruning,
Ground
Clearance,
Tree Surgery,
Fencing,
Planting,
Logs,
Wood
Chipping,
Hedges
Maintained.

Fully Insured

Tel. 01664-822471



Keith Wadkin & Son
Tree Specialist
Hickling
Melton Mowbray, Leics.
LE14 3AQ

Established 1959



**Table Tennis at
the Village Hall!**
Monday nights 8 – 10pm

Simply Social Table Tennis

- Whether your preference is to have a friendly knock-about, or to seek the challenge of an intensive game, our flexible sessions are perfect for you
- Cosy village hall venue with superb facilities and tables for full match play standard
- Enjoyable all round exercise in an exceptionally friendly environment, whatever your experience and ability

- Our season runs through the winter from late September to Easter, with a festive break
- Comprehensive set up to and quality equipment provided according to ability play standard
- Tea and biscuits included, providing an opportunity to relax and socialise

SIMPLY CALL 01664 822761 or 01664 820262 FOR AN INFORMATIVE CHAT

*Try our outdoor table at the Wharf in Hickling.
Bats and balls available from The Old Wharf Tearooms*

It's a great opportunity to get out of the house, be active and keep warm. If we're not having a knock about, then there's always tea to be drunk!
Our ethos of 'simply social' is at the heart of our sessions which offer a friendly knock-about, or a more intensive game, and of course tea and biscuits together with the chance to socialise.
For more information call Alison 822761, or Dave 820262.



Est. 1967. Celebrating 50 years!

hicklingpreschool.co.uk
Grow. Explore. Discover.





We've have been enjoying the Autumn term at preschool and lot's of our activities have been about how the seasons change. We've been out and about exploring the village and have learnt about the changes we see in nature around this time of year, as well as animals that are getting ready for hibernation.

As always, we've been busy on "Bake off Tuesdays" and have made chocolate brownies and swiss rolls. We're looking forward to our Christmas bakes as we'll be making mince pies, gingerbread and Rudolph's truffles! December is one of our favourite months at preschool as we get out the glitter and will do lot's of Christmas crafts, follow us on our Facebook page to see what we get up to, just search for "Hickling Pre-School" and look out for our logo shown at the top of this page.

We have had lot's of new children enrol at preschool recently and some of our sessions are full, so if you'd like your children to attend in the coming year its worth getting in touch early.

We are also always looking for cereal boxes and Christmas/birthday cards for use in the preschool. We are located in Hickling village hall Monday – Friday 9.15am-3.15pm during term time you can visit our website hicklingpreschool.co.uk for more information on how to get involved or how to register your child.



Freeview
EST 1982

HEWITT'S AERIALS

HUSBAND & WIFE TEAM

**DIGITAL TV AERIALS FITTED
& REPAIRED • FREESAT
EX-POINTS • TUNING
SETUPS • DIAGNOSTICS**

**FREE QUOTES • ALL AREAS
OAPs DISCOUNTS**

CONTACT MANDY OR DAVID

07554 387206
01664 820430

Corner Cottage, Clawson Lane, Hickling LE14 3AB

Hickling Village Hall
Strictly Why Not Dance?
At Hickling Village Hall
Main Street, Hickling, LE14 3AQ
Thursdays - 4pm to 6 ish.

Ballroom, Latin. An hour with instructor and time to practice afterwards.
£15 per couple - come and try some new moves.

Exercise the mind and the body and reward yourself with a cup of tea and some homemade cake.

Couples only at the moment.

No Booking required.



**Hickling Local
History Group**



**Information
Boards Project**

Views of Hickling—notecards

FOR SALE

~ 2 Designs ~ £4 per pack ~ Packs of 8 ~
Available from Pauline Chell 01664 822835



VILLAGE BREAKFASTS!

Hickling Village Hall 9 – 11am

Sundays: December 4th / January 8th

Full English Breakfast £5.00

Vegetarian Full English £5.50

Children's portions £3.50

Toast & Muesli also available

Bring your family, meet your friends.

ALL WELCOME

All bookings should be made via Pauline (01664 822835), preferably at least 10 days in advance. It is not essential to book, but it helps with the shopping. We do need to know, in advance, if you have any dietary needs, e.g. gluten free, vegetarian, etc. Remember, it is not necessary to make a booking, you can just turn up and enjoy yourselves!

Thank you.



HICKLING VILLAGE HALL 150 CLUB

3 draws take place; October, December and February.

Prizes £20 £40 £60 £80 each draw

Thank you to everyone who has supported the 150 Club over many years; any queries or if you would like to join, please contact Liz Vear 07805407229

WINNERS:

November 2022

NO.103 £80 Dougie Bryce Bridegate Lane

NO.172 £60 Ian Richardson Bridegate Lane

NO.153 £40 J. Neal Main St. Hickling

NO. 73 £20 N. Bulmer Harles Acres

Forthcoming events in 2023

January

- **Tuesday 17th** Day trip to London to the Palace of Westminster [guided tour of the House of Commons & Lords] then free time in London
☎ Pauline Chell 01664 822835 or see her at one of the Thursday meetings for details to book your place. Places are limited to 40.
There will also be 9 coach seats available for anyone who wishes to visit London only

April

- **Tuesday 18th** Day trip to Thornbridge Hall & Gardens & Matlock Bath
☎ Pauline Chell 01664 822835 or see her at one of the Thursday meetings for details to book your place.

On-going projects:

- Stilton cheese recipes - Long Clawson dairy has asked us to create some original recipes using Stilton cheese. We have some information for members about this project
- Quilts - Gilly is still collecting embroidered squares for this project. Thank you for all the work undertaken so far.
☎ Gilly 01949 81202 for further information.

& some extra dates:

Tuesday 16th May - WI Visit to the Recycling Centre
Friday 19th May - WI Visit to the Recycling Centre

COACH TRIP TO THE HOUSES OF PARLIAMENT & PALACE OF WESTMINSTER

TUESDAY 17TH JANUARY 2023

This trip is open to anyone who would like to participate in the Visitor Experience at Westminster. There will be a talk and tour with an expert guide visiting both Chambers; the State Rooms and St Stephen's Hall. Afterwards there will be free time to spend in London before returning home.

If you are interested in joining us please contact Pauline Chell 01664 822835 and reserve your place.



During 2022 members of Hickling WI have been making reading cushions and quilts to give to Ukrainian refugee children who are now living in our local area as Christmas Gifts. Each gift is individual and something for the child to keep and treasure which after perhaps losing everything will mean a great deal to them.
Tina in her role as Mayor of Rushcliffe has been very encouraging and supportive to us. These gifts are being presented on 16 December 2022 at 7.30 in Hickling Village Hall. If anyone is interested in seeing the items or would like to attend, you are welcome to join us.



Hickling W.I. members taking a break from their fundraising stall to have afternoon tea with the queen and Paddington at the recent Scarecrow weekend in Hickling.
We had a wonderful Scarecrow Weekend, meeting lots of people and taking photos of them and their children with Paddington and the 'Queen'. Their photos will be a part of

their history for the year the Queen sadly died.

HICKLING WI WAS 70YRS OLD IN 2017

The Hickling WI bought a sapling Black Poplar tree [which was grown as part of a Suffolk Conservation project] to plant in Hickling in commemoration of their 70th anniversary in 2017. A Black Poplar tree was chosen as WI members realised the rare 200yr + tree in Hickling Churchyard was reaching the end of its life. It was hoped to plant the sapling in Hickling Churchyard but the decision was that the churchyard was too congested. Another site was chosen close by and within sight of the Church. The sapling was planted by the WI and Tina Combelleck – the Parish



Councillor in a corner of Hickling Cemetery. It was carefully tended and regularly watered by members of the WI who carried containers of water from their homes to do this.
Unfortunately, the tree was accidentally cut down during hedge cutting work at the cemetery. A replacement tree was acquired and planted which hopefully will grow to maturity and live for the next 200yrs. Please, when in the cemetery take a few moments to look at the rare tree which can be found in the top left-hand corner.

SOMETHING FOR YOUR DIARY

HICKLING W.I. PRESENTS

SPRING FAYRE

18TH MARCH 2023

10.30 'til 3.30

KINOULTON VILLAGE HALL

FREE ADMISSION

OVER 20 STALLS SELLING A WIDE RANGE
DELICIOUS REFRESHMENTS AVAILABLE ALL DAY

LADY FRIDAY Are you short of TIME?

I could support you when you're working or on holiday

PETS
Regular or occasional dog walking & pet care at your home

CHILDREN & ELDERLY RELATIVES
Meet children from school or take them to their recreational activities*
Accompany elderly relatives to appointments or shopping, or whatever

HOME
Water plants, take mail in & generally check all is well

Do not hesitate to ask - I am mature and versatile!
References available on request, Inc DBS*

Angela Sallis, 6 Melton Road, Long Clawson, LE14 4NR
01664 822597 angela_sallis@btinternet.com

 **Belvoir Foot Health Clinic**

 DipCFHP  MPSPract  professional standards authority accredited register MPSP5909

 **07714876006**

 **belvoirfoothealthclinic.co.uk**

 **Suite G, Cotgrave Business Hub, Candleby Lane, Cotgrave, Nottinghamshire, NG12 3US.**

We wish everyone a Very Happy Christmas and a Happy and Peaceful New Year.

"Christmas is the warm heart of winter, a religious festival wise enough to embrace echoes from the days when primitive man's response to the shortest day was to lure back the light with sacrifice and ritual. It's name dates from the fourth century, when the Christian church chose to celebrate the birth of Christ on December 25th, a day that was already the birthday of the sun god Mithras, whose worship had spread northward through the Roman Empire. Candles, gifts and evergreens are echoes from earlier ages too, even though it was the Victorians who planted the Christmas tree in our year. If winter is the season of darkness and death, so too it holds the promise of bright rebirth, as our planet swings and brings back the precious emotion called hope. The best thing about winter isn't the magical snowflake, or the delight of Christmas, or the magnificence of a storm. It's the fact that we know it's going to be followed by spring."

(Susan Cooper; the Folio book of Winter)



The Best Christmas Present for your Dog!

The very best present for your dog is, of course, to keep them safe. Did you know that hundreds of dogs end up at the Vets on Christmas Day and throughout the festive season with issues that can be avoided with a little pre planning.

There are so many interesting things lying about for your dog to sniff and devour and not just the Christmas Turkey left to rest on the kitchen counter! Rich food can cause a nasty stomach upset so don't be tempted to give your lovely dog a full Christmas dinner – just add in some turkey and plain vegetables if you want to give them an extra treat. Watch out for chocolates lying around – it is toxic to dogs, and you should ring your vet if you believe your dog may have eaten some. Remember that holly, amaryllis and mistletoe are all toxic too, so keep them out of harms way. Do make sure that your dog isn't able to get tangled up in the Christmas Tree – yes, it happens; but more dangerous is chewing through the tree lights. It is wise to supervise puppies in particular around the tree.

Dog's can get very stressed at Christmas time too. Having lots of excited children running around or just a house full of people can all be a bit too much. It's a good idea to exercise your dog before your guests arrive and then give your dog plenty of time out during the day. I hope you have a magical Christmas this year.

Lynne Marshall
Dog Trainer and Behaviourist
Love Your Dog Training

www.loveyourdog.org.uk



Ramblings from The Rectory

Pope Julius 1 authorised December 25th to be celebrated as the birthday of Jesus Christ in AD 353, because no one really knew exactly when He had been born. It makes a lot of sense to choose December 25th as it is 9 months after the Annunciation, which is the time that the Angel Gabriel came to Mary and told her the good news. It also corresponds with the Jewish festival of Hannuka and, as Jesus was a Jew, that would also make a lot of sense.

Professor Charles Follen lit candles on a fir tree in America in 1832 and Prince Albert brought a fir tree into Buckingham Palace in 1841

It is a long time since Queen Victoria enjoyed her Christmas tree and Charles lit his candles. Many centuries have passed since Pope Julius “fixed” the date of Christmas Day and over two millennia since a special star hovered over a stable.

As we approach Christmas once again 2022 years since Jesus was born, it gives us all an opportunity to pause amid all the excitement, the elaborate decorations and all the commercialism that Christmas is today, to consider again the event that Christmas really celebrates; that person born in stable, transported several miles away from his home because the Roman invaders wanted to know how many people they had conquered, and then being persecuted by a jealous king. Surviving all that as a baby, growing up in a very quiet way with his mother and father until, at the age of 33, once again being persecuted and put to death by the Roman invaders.

That however is not the end of the story, that ending we celebrate at another time in the Christian calendar... Easter, a time of new birth!

Let us remember this Christmas the simplicity of Christ’s arrival on earth, the fact that He humbled himself to be human born in a stable and ask ourselves are we making Christmas too complicated? Are we spending too much time in preparation of food, presents and decorations?

Christians spend Advent, which is the time leading up to Christmas, in prayer, fasting and simple acts of faith, so that we can focus on the true meaning of Christmas which starts for us at our Christmas Eve service this year at Kinoulton Church.

Noël and I wish you all a Joyful Christmas and a Peaceful New Year and look forward to maybe seeing you at one of our three Carol Services.

Rev Maggie

Contacts:

Associate Priest (part time)
Revd Maggie Woodward,
The Rectory, 41 Main Street,
Kinoulton, NG12 3EA
Tel: 01949 81183
maggie.woodward511@btinternet.com

Readers:

Sheila Hill Tel: 01949 81096
e-mail: sahill18@btinternet.com
Robert Jones Tel: 01664 822916
e-mail:
robert.c.jones02@gmail.com

Service Dates for St Luke’s Churches: Sundays unless designated

Date	Kinoulton	Hickling	Upper Broughton
Dec 4	9.00am Holy Communion MW	6.30pm Evening Service SH	11.00am Holy Communion MW
Dec 11	11.00am Morning Prayer SH	9.00am Holy Communion MW	10.00am Morning Prayer RCJ
Dec 18	9.00am Holy Communion MW 4.00pm Christingle SH	4.00pm Carol Service MW	11.00am Morning Prayer RCJ
Saturday Dec 24 Christmas Eve	5.00pm Outdoor Carol Service SH MW 11.30pm Midnight Mass Group Service MW	(no service)	6.30pm Carol Service RCJ PM
Dec 25 Christmas Day	(no service)	10.00am Holy Communion Group Service MW	10.00am Morning Prayer RCJ
January 1 New Years Day	(no service)	(no service)	10.00am Holy Communion Group Service
January 8 Epiphany	11.00am Morning Prayer	9.00am Holy Communion	10.00am Morning Prayer
January 15	9.00am Holy Communion	10.00am Morning Prayer	11.00am Morning Prayer
January 22	11.00am Morning Prayer	6.30pm Holy Communion	9.00am Holy Communion
January 29 Presentation of Christ in the Temple	10.00am Holy Communion Mission Partnership Service	(no service)	(no service)

MW Rev Maggie Woodward
PM Rev Paul Massey
SH Sheila Hill
RCJ Robert Jones

Rev Maggie Woodward The Rectory, Kinoulton (01949 81183
maggie.woodward511@btinternet.com

Christmas at St Luke's

The PCC, Churchwardens, The Ministry Team and Rev Maggie invite you all to join with us to celebrate Christmas this December.



Sunday 18th

4.00pm Carol Service at Hickling
4.00pm Christingle Service at Kinoulton

Saturday 24th Christmas Eve

5.00pm Outdoor Carol Service at Kinoulton
6.30pm Carol Service at Upper Broughton
11.30pm Midnight Mass at Kinoulton

Sunday 25th Christmas Day

10.00am Holy Communion at Hickling
10.00am Morning Prayer at Upper Broughton

Coffee with Santa this year?

Yes, absolutely – he's coming to Kinoulton on 10 December and will be seeing children at the Festive Fun Morning in the Village Hall from 10.00am. Difference this year? Fun for everybody – festive stalls, children's entertainer, carol singing, bacon cobs, coffee and cake... and more... see posters!



Weekly Coffee Mornings on Thursdays from 10.30am.

Come and meet your friends, enjoy homemade cakes etc. and a warm welcome. No set charge, just a voluntary donation if you can.

This is your Village Church.

If you would like to support it in any way please contact:

John or Gill Bloor at
cesterern@btopenworld.com or

Alex Thomas at alex28thomas@btinternet.com

Could you offer a cake occasionally? Help with
cleaning twice a year by rota?



St. Luke's Hickling brings you

Come along and Support
these young musicians,
in aid of St. Luke's core costs

A Christmas
Concert
Tuesday
6th December
7.00 pm
£7.00
Mulled Wine
Mince Pies
Etc.

Tickets £7.00 for adults,
Under 16s £5.00,

From Alex Thomas (07788 518156)
John and Gill Bloor (07780 479866)
Or Sarah Bailey (01664 820470)

with
Fernwood School Concert Band
and
Hickling Village Choir

Contact 07788 518156 alex28thomas@btinternet.com for more details



CHRISTMAS MENU

Starters

- Maple glazed pork skewers- (GF)
- Smoked salmon and prawns on a gem lettuce leaf with red onion and mary rose sauce- (GF)
- Spiced winter roots soup topped with chilli flakes and toasted sesame seeds, served with crusty bread- (GFA) (VE)
- Duck liver and cointreau parrot with crusty bread and side salad-

Mains

- Sleigh Burger- (GFA)
 

2 x Prime beef patties in a brioche bun topped with bacon, brie and cranberry, served with sage and onion topped fries and red slaw.
- Festive Mac'n Cheese- (VA)

Maccaroni pasta dressed in decadent mature cheddar cheese sauce, topped with pigs in blankets, Long Clawson stilton, and crunchy stuffing crumbs.
Served with cheesy garlic bread and red slaw.
- Blade of Beef- (GF)

Slow cooked blade of Nottinghamshire beef braised in a red wine and shallots, served with truffle and parmesan mash, maple glazed carrots and red cabbage.
- Mushroom, Chestnut and Roasted Squash Parcel- (VE)

This earthy mushroom, fruity and nutty filling make a delicious meat free pastry parcel.
Served with creamy mash, maple glazed baby carrots and red cabbage.
- Christmas Dinner Pie-

Everything all in one delicious homemade pie. The filling is roast turkey with all the trimmings.
Served with roasted brussels and pancetta with creamy mash and turkey gravy.

Desserts

- Black Forest Sundae-

Chocolate ice cream with black cherry conserve, chunks of brownie topped with whipped cream, chocolate sauce, flaked chocolate and wafers.
- Traditional christmas pudding-

served with homemade brandy sauce.
- Millionaire Cheesecake- (VE)

Toffee sauce chocolate ganache topping with gold splashes.

(VE) Vegan (VA) Vegetarian available (GF) Gluten free (GFA) Gluten free available

Celebrate with us at the Plough Inn this

CHRISTMAS

enjoy a laid-back meal with friends

A traditional and tasty pub menu with a festive tweak. Mulled wine to warm you on arrival and a decorated table to bring some Christmas joy.

2 courses £22.50

3 courses £26.50

Booking for a big group? We also offer a Christmas banquet for groups of 30+
-ask for details-

Served from 1st December



📍 The Basin, Main St, Hickling
Melton Mowbray, LE14 3AH

☎ 01664 820448

✉ relax@theoldwharf.co.uk

🖱 www.theoldwharf.co.uk

Time to relax and unwind

TEAROOM OPEN SEVEN DAYS A WEEK FROM 9.00 AM - 4.00PM

Please note the kitchen closes at 3.15pm and last drinks orders are at 3.45pm



📌 Find us on Facebook

How DNA solved the mystery of George Warren and Richard Brooks

When a young boatman named Richard Brooks arrived in Hickling in the late 1870s he was working on the Grantham Canal, probably managing the horses. He is likely to have passed through on several occasions and, if he stayed overnight, would have slept at the second wharf next to the Navigation Inn (now Bridge House). At some point he met a local girl, Mary Rippon, and they married in 1878.

We know that he was living with his wife and eldest daughter close to the canal and next door to his in-laws in 1881. We know that his youngest daughter, Kate, was born in 1887 and that Mary Brooks and their 4 daughters are still living in Hickling at the time of the Census in 1891.

But there is no further record of Richard Brooks in Hickling. Or anywhere.

So, what happened to him?

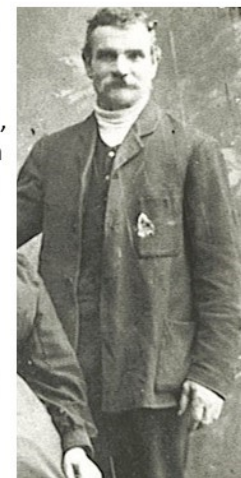
Over the summer, the family of George Warren contacted us about their links to Hickling and they followed up with a visit to the village—intrigued by the canal, the two wharves, the Navigation Inn, old cottages and the Church and keen to explore in the footsteps of their relative. But apart from seeing where he had lived, they were keen to find out what had happened to Mary (Rippon) Brooks—which is when they revealed their extraordinary DNA story.

When you can't search backwards, you have to search forwards; following the science.

When the family of George Warren approached us about their links to Hickling it seemed impossible to be sure of their connection to Richard Brooks who lived in the village in the 1880s. However, Ian Warren's tutor in DNA studies had advised him to 'follow the science' – he did. Their story has been written up on the local history website but it cannot do justice to the many, many hours of painstaking research which led him to solve the mystery of his great grandfather's origins – it is an incredible piece of work and, for Hickling, a fascinating glimpse into the lives of the village and the canal at the time.

In 38 years of searching; the family went back 13 generations, placed their earliest ancestor in 1530, placed 1,343 people in 460 locations. But the Warren family had resigned themselves to not being able to go any further back than 1891 in their search for George Warren – grandfather and great grandfather to the searchers. They had memories and anecdotes which he had left behind him but no way of confirming his stories or placing him before the age of about 32. The earliest record they had was from the 1891 census when George Warren was living and working close to the canal in Runcorn, Cheshire where he was living with his wife and eldest daughter.

The detail of the family's DNA search & how they did it can be found at:
www.hicklingnottsllocalhistory.com/richard-and-mary-rippon-brooks-the-path-to-george-warren/
 (cont'd next page)





**FOR ALL YOUR BUILDING
AND DIY SUPPLIES**

SLABS ❖ AGGREGATES
WALLING ❖ CEMENT
BRICKS ❖ BLOCKS
ROOFING ❖ FENCING

ANY AMOUNTS CATERED FOR



**FULL RANGE
COAL &
SMOKELESS FUEL**

for delivery
or collection

MON - FRI: 7.30am - 5.00pm / SAT: 8.00am - 12.30pm

The Depot Airfield
Dalby Road
Melton Mowbray

Tel: 01664 500947
Fax: 01664 410650

STEVEN M. DAW

PLUMBING, HEATING and GAS SERVICES

Plumbing work – repairs; Central heating and boiler installations; Boiler servicing; Central heating power flushing; Bathroom design and installation

Over 30 years experience

Based in the Vale of Belvoir

Tel: 01664 822648 - Mobile: 07860 285031

Email: stevendaw@btinternet.com

www.stevendaw.com



Freeview
EST 1982

HEWITT'S AERIALS

HUSBAND & WIFE TEAM
DIGITAL TV AERIALS FITTED
& REPAIRED • FREESAT
EX-POINTS • TUNING
SETUPS • DIAGNOSTICS

FREE QUOTES • ALL AREAS
OAPs DISCOUNTS

CONTACT MANDY OR DAVID

07554 387206
01664 820430

Corner Cottage, Clawson Lane, Hickling LE14 3AB

A.R. PEET LIMITED

**Specialist Retailer of
Wood, Gas, Electric and
Multifuel Stoves**

Tel: 01664 822397
www.arpeetstoves.co.uk
info@arpeetstoves.co.uk

**Home Farm
Main Street
Hickling**

Family members took DNA tests and these offered the opportunity to fix an earlier point in time (c.1800) and to try and work forwards towards 1891. The initial results produced thousands of possible connections for the Warren family but important locations began to emerge; Ireland, USA (Florida & links to a native American community), Canada and in England; Hertfordshire, Somerset, Yorkshire and Lancashire. Then the painstaking process of elimination began. The first task was to eliminate any known connections that didn't involve George Warren as a shared record (for example; his wives, the mothers of his grandsons etc). This reduced the number of connections from 54,000 down to 6,000.

The chart is a complex family tree with multiple columns for names, dates, and locations. It shows the lineage of the Warren family, including names like George Warren, William Henry Brown, and Richard Brooks. The chart is handwritten and includes dates and locations for various family members.

The first breakthrough came when Mick Warren asked his cousin to take a DNA test – they shared a grandfather (George Warren) but their grandmothers were different (George married 3 times); this meant that any DNA connections they shared must have come through George Warren. This produced 28 significant individuals which included several in Immokalee, Florida; their only English ancestor was William Henry Brown born in Bristol in 1856 – however, no connection could be found between George Warren and William Henry Brown. To cut a fascinating story too short; two sisters were found in Hertfordshire which led to 2 cousins who had both changed their names; William Henry Brown (born Edwin Goodhind) and Richard Brooks—a path which then led to Hickling. Once the names had been linked, records and anecdotes confirmed the connection (including the tragic drowning of Richard's brother as a boy). No one knows why Richard Brooks left his wife, his 4 daughters and Hickling after 10 years here or why he changed his name; perhaps he was just a wanderer? Perhaps his background as a boatman made it difficult to settle in a farming village? There is a hint in a news report from 1900 that Mary was still expecting him to return but she had family and a community around her and it is likely that she managed well enough—it is even possible that he came and went between his two families for a while. Eventually she re-married a Hickling widower in c.1904 and (another victory for DNA research), she can be found in Upper Broughton in 1911. There is no doubt that Richard Brooks came to Hickling, married, had a family, left, changed his name and settled in Cheshire—he had 18 children from 3 marriages and died in 1935; **follow the link on the previous page for the long read—enjoy!** (brief warning: DNA research can produce uncomfortable results and you shouldn't embark on these searches unless you are prepared for these.)



Grantham Canal – Update

When the Grantham Canal Water Restoration Group (GCWRG) was established it immediately set out the issues that needed to be resolved to restore water levels to our part of the canal. Not surprisingly, top of the list was the repair of known leaks. It has taken years of discussion, pressure and publicity but, the serious leaks at Irish Jack's Bridge and near Devil's Elbow have now been repaired.

The work has involved repairing major leakages around the vicinity of Culverts 39 and 42 and Grantham Canal Society, as an approved contractor for The Canal and River Trust, used their volunteer labour to support CART in carrying out this work. Redundant sheet piling was taken out and the banks excavated to find the voids where water penetration from the canal had successfully made its way into the culverts. To remedy this situation deep trenches were excavated, in places over 2m deep along the bank side, they were then filled and compacted with imported puddle clay to form a waterproof barrier to seal the leakages.

60 tonnes of clay was delivered to site from Castle Clay Sales from Stoke on Trent who specialise in providing Puddle Clay to Canal Organisations.

Mechanical excavators and a dumper were hired locally from AE Faulkes at Hickling and GCS volunteers completed the project working full time in just over a week. A

fantastic effort from all those involved.

Recent rainfall has meant that the canal now has water in it and levels are slowly rising, so it looks promising. GCWRG will continue monitoring the levels but, in truth, it won't be until next year until we have a clear idea of how effective this is or if there are other leaks we are not aware of. Fingers crossed.

In the meantime, GCWRG turns its attention to two other priority areas i.e. clearing reeds and blockages to allow the water to flow down the canal to our area, and maximising the feeds that are essential to maintain levels. Plans are already coming together to clear reeds along the canal to create a four-metre-wide corridor. GCWRG are then looking at ways to get volunteers to widen the corridor further and keep it clear in certain places by pulling reeds by hand. It will be hard, smelly work but well worth the end result.

Work is also underway to understand the recently rebuilt canal feed coming out of the Knipton Reservoir and to clear the 5km feed as it passes through open ditches and 200-year-old brick culverts. This feed is vital to our part of the canal and, in fact, it is the only reason that Knipton Reservoir was built in the first place. The reservoir and a large part of the feed are on Belvoir Estate land, so the assistance of the Estate is vital to this work and GCS will, again be carrying out some, if not all, of this work. GCWRG is also, with the support of Rushcliffe Borough Council and local MPs, pushing to have the canal reclassified from a 'remainder waterway' and instead to be considered as a health and leisure corridor used by thousands daily, and to be funded accordingly.

GCWRG continues to raise funds – including a recent generous donation of £300 from the Hickling Scarecrow weekend and the Mayor, Cllr Tina Combellack, one of the founder members of our group, has made GCWRG one of her two chosen charities to help raise funds for our valued waterway. We will be using these funds to support these projects and anything that will raise and maintain water levels in our section of the canal.

Finally, GCWRG is in close contact with the Lady Bay local group who are rightly concerned that their stretch of canal recently dried up suddenly, and we will continue to offer advice and support as they set out on a similar path and GCS and CRT are, similarly involved to resolve issues at that end of the canal.

It has been a long, slow process but we are at last making progress and gaining momentum and GCWRG are grateful to our partners Grantham Canal Society and Canal and River Trust and to Rushcliffe Borough Council for helping to get this far and, of course, to you for your support along the way.

For more information or to donate, find us on Facebook – search GCWRG – or email gcwrg@yahoo.com.

Grantham Canal Water Restoration Group





**Is your dog starting to slow down and show signs of stiffness?
Does pooch suffer with arthritis and compromised joints through
hip/elbow dysplasia**

If so contact me to discuss how massage can help

 Katy@timeforpooch.co.uk 

 **07899 848 449** 

 www.timeforpooch.co.uk 

Helping dogs with their mobility and movement

Follow us on facebook



Award-winning English Wine from Nottinghamshire family vineyards est. 1975



- **Vineyard Experience Vouchers** for vineyard tour and wine tasting: Rated 5-star in customer reviews, vineyard tour and taste 6 wines, 2-hours. Gift packages from £25
- Private groups welcome
- Traditional method English Sparkling, inc new Rosé
- Still White, Rosé, Cherry & Mead
- Private events: weddings, parties, meetings
- Wine shop open Fri-Sun 11-4pm in the barn
- DIY wine tasting and trail



Rural Antics - Art, Craft and Skills Workshops

- | | |
|-----|--|
| Dec | Christmas: Willow wreath, Fused glass, Felt mistletoe, Cake decorating, Macrame, Sew Frosty the Snowman |
| Jan | Spinning ring making, Wooden carved gonk, Crochet basket, Fused glass bowl, Mosaic, Quentin Blake style drawing, Embroidery, Bookbinding a notebook, Macrame plant hanger, Smart phone photography, Animal Pastels, Basket weaving, Give a creative gift! |
| Feb | Silk painting, Macrame wall hanger, Stained glass, Felt flowers, Gel plate, Mosaic stepping stone, Oil painting, Cake piping, Pencil drawing, Wool weaving, Watercolour |

Full details and bookings online



HANWELL WINE ESTATE Hickling Pastures, South Notts, LE14 3QG

hello@hanwellwine.co.uk Tel: 01949 81393 www.hanwellwine.co.uk

Nevile Ward News Autumn 2022

For Hickling, Kinoulton, Upper Broughton, Hickling Pastures, Langar, Owthorpe and Colston Bassett

From Cllr Tina Combellack
Cllr.tcombellack@rushcliffe.gov.uk

We shall remember.

Poppies: With thanks to the many knitters and crafters in Rushcliffe who made literally hundreds of poppies we were able to have environmentally friendly poppy wreaths for Remembrance Day. A very creative florist, Elizabeth, in West Bridgford, assembled the wreaths using locally sourced Laurel which is symbolic of honour and victory. .



Harvest festival: It was good to see this creative harvest festival tribute made of wheat and bread in Upper Broughton Church. It is particularly poignant at this time when we remember the people of Ukraine, whose land is known as the World's Bread Basket.

Talking of Ukraine – the Hickling WI have been making the most wonderful Christmas gifts for the children of Ukraine now living in Rushcliffe. I have befriended a Ukrainian family in Sutton Bonnington who will be talking at the presentation evening in Hickling village hall on 16th December.

Neighbourhood Watch: There has been a resurgence of interest in Neighbourhood Watch, which provides an on-going watching brief of crime prevention, and persistent criminal activity in the villages. If you would be interested in co-ordinating a Neighbourhood Watch group (not an onerous job) approach your Parish Council in the first instance. I am led to believe it is of value when applying for your household insurance if Neighbourhood Watch covers your village.

Fire and the energy crisis: I am very well aware that many people will be making efforts to cut back on energy use. I have been talking to the fire service and there are particular concerns around the use of candles and portable heaters and camping stoves. The fire service offers a free service to install smoke alarms and check properties for fire hazards. "At Nottinghamshire Fire and Rescue Service we are committed to making the communities we serve safer, and the best way to do this is to prevent incidents from happening in the first place. Home visits are a great way to do this, as they are a proven way of reducing fires, fire-related deaths, and fire-related injuries. In addition to looking at your fire safety, we are now working with partner agencies to also offer advice on falls, keeping warm during winter, stopping smoking and alcohol intake. This is called a Safe and Well Visit that, in addition to fire safety, is tailored to an



individual's needs relating to their health and lifestyle choices". Ring 0115 8388100

Flood Wardens: It is that time of year again when we seem to be experiencing excessive amounts of rain. I am well aware there are areas within the Ward prone to flooding and have in fact attended a Flood Warden training course. If anyone is interested in the training, which is provided by the County Council and Fire Service please contact me.

Audio Magazine: As Mayor, I was interviewed by Andrew Charlett for the Bingham Audio Magazine group who supply a monthly CD for those vulnerable people who may have listening or reading difficulties, are house bound or have other needs. It provides local news; Interviews with local people; Talks; A poetry section; Seasonal/topical articles; Nostalgic reminiscences; Occasional music... and more. I provided a round up of the many and varied events I have attended so far this year. I am sure they would welcome contributions from the enormous number of voluntary groups we have in the Ward.



Working to restore and maintain water in the Nottingham to Grantham Canal

We are continuing to forge ahead with some good results.

With the help of the Grantham Canal Society and Canal and Rivers Trust we have at last got leaks at Culverts 39 and 42 at Kinoulton repaired. Through a motion brought to Full Council. Rushcliffe are providing £100,000 from the UK Shared Prosperity Fund to further fix leaks and do some badly needed aquatic reed clearance. CRT has to undertake a feasibility study first, but watch this space – well canal! To read more there is a separate article in the newsletter.

Planning: We seem to have received one or two controversial planning applications recently. If anyone has concerns about planning **please contact me at** cllr.tcombella@rushcliffe.gov.uk

Wishing you all a very Merry Christmas and Happy New Year.

Cllr Tina Combella .



VALE ELECTRICS
ELECTRICAL CONTRACTORS

www.valeelectrics.co.uk



Parish Council for Hickling & Hickling Pastures.

Summary of minutes from meetings held on 27th September 2022, 17th October 2022 and 25th October 2022; full copies can be found on Parish Noticeboards and at <https://hicklingnotts.org/parish-council/>

Raised by parishioners:

- (27/9) Concerns over smouldering wood smoke hanging over Hickling Pastures for several days; raised with Environmental Health.

Planning:

- **22/01701: The Orchard** (27/9) Additional information and an extension of the deadline was requested; comments included the need for a hedge height of at least 1.8mtrs and correction of the address which should read, 'Main St' not 'Long Lane'. (17/10) The Parish Council outlined its objections including the need for planning conditions to be carried forward to any future permissions for amended schemes. Members of the public also voiced their objections in detail (see full Minutes).

◇ The application has subsequently been withdrawn.

- **22/01793/FUL: new field stables, land off Bridegate Lane** – no objection, subsequently withdrawn.
- **21/00432/FUL: Continued mixed farm and forestry use of part of farm yard for logging enterprise (Retrospective) Land At Hickling Pastures Melton Road Hickling Pastures** – update requested.
- **22/01807/FUL:** Extension to the side of the main dwelling, creating a utility and boot room. Vale House Main Street Hickling – no objection
- **22/01989/FUL Proposal for a service/petrol station, Hickling Pastures.**

◇ (27/9) It was agreed to accept an invitation from a development company wishing to attend a Parish Council Meeting to present a proposal.

◇ (25/10) Jason Lowes, planning consultant, and Sarah, landscape architect, attended the meeting to discuss planning application 22/01989/FUL. Welcome Break is a development partner, the land is not yet owned by the developers.

◇ A detailed record of the applicant's proposal, representatives' presentation & responses to questions and parishioners concerns can be found in the Minutes of this meeting on Parish Noticeboards and online.

◇ The proposal includes; provision (including overnight) for HGVs; electric vehicle charging (20 cars); a 4-island petrol filling station; comfort facilities; rest area; hot food outlets (650m.sq retail space). The site will not be covered with permeable surfacing material, run-off will be managed with attenuation ponds.

◇ Mr Lowes explained there is a need for this provision as there is currently nothing between Leicester and Newark. He also explained that alternative sites had been considered but are viewed as unsuitable; more detail on this was requested.

◇ The landscape architect outlined her assessment process and reported the development would impact a small number of visual receptors and that the proposal would deliver a 36% net biodiversity gain.

◇ Parishioners raised concerns relating to: noise pollution; light pollution; excessive traffic on the A606, the roundabout and sliproads; 24-hour opening, littering, anti-social behaviour and criminal activity; road safety for cyclists and pedestrians; water pressure, drainage and flooding; lack of screening (the facility would need to be visible) and intrusive signage; impacts on the rural and farming character of the location; incompatibility with the Neighbourhood Plan; environmental impacts including emissions; access arrangements (especially for HGVs) and the potential for traffic jams on the roundabout; sewage and foul



water management; the existing site is on a steep slope – how will this be levelled and at what level; attracting new and increased traffic/visitor numbers; potential for the development to be expanded in the future.

◇ Particular concern was raised about the development's incompatibility with the recently adopted Neighbourhood Plan; protecting the countryside, not increasing traffic or light and/or noise pollution, preserving tranquillity.

◇ Most importantly ... WHY THIS SITE - what does the Needs Report specifically detail that makes Hickling Pastures THE most suitable site, as opposed to the existing sites at Stragglethorpe/Cropwell Bishop & Saxondale/Bingham A52, when the Hickling Pastures site is green field, in undeveloped open farmland and countryside & adjacent to the Hickling Pastures settlement?

• **The Old Wharf Building.**

◇ (27/9) Update requested following the Parish Council submitting a detailed historical report, with supporting documents, to Matt Hilton & Peter Muter to supplement their recent request for a full & detailed planning review.

◇ 22/01907/FUL: A retrospective application has subsequently been submitted by the owner of the Tearooms business which will be discussed at a later meeting;

• **Permission granted for:**

◇ 22/01213/FUL: two storey side extension includes side porch. 1 Main Street, Hickling,

◇ 22/01271/FUL: Proposed front extension to dwelling (amendment) Hillside Cottage, Hickling Pastures

◇ 22/01318/FUL: Replacement of render to front, sides and rear. The Byre Main Street Hickling

• **Ward Member reports:**

- Cllr Cottee advised that work has been approved to re-surface the road in Hickling Pastures, heading towards the Widmerpool roundabout on A606 in April 2023.
- Devolution paper- Nottingham County Council will be distributing information concerning this paper – this is regarding a plan over the next 3 years.
- Advised that Laura Trussler has been promoted.
- Advised that he has given £500 towards the funding of the new website for Hickling Parish Council.
- Point with regards to the speculative email concerning a service station development on the A606, Councillor Cottee reported that he could recall that roman ruins were found in a field in the vicinity of the A606 roundabout during his childhood.

• **Finance:**

- Audit Appointment Regime - associated paper distributed prior to the meeting; unanimously agreed to stay in the scheme
- Asset of Community Value; the Wharf & the wider area – (27/9) it was agreed to complete the application forms and submit to RBC. (25/10) the forms have been received and will be discussed at a future meeting when all the information has been collated. A parishioner asked if AE Faulks yard will be included in the asset wider area – the Parish Council have not discussed this at this stage.
- Housing Needs Assessment – Hickling and Upper Broughton update. The residents' survey will be carried out in April 2023 when questionnaires will be distributed to households.
- Civility and Respect Project: councillors agreed to sign this pledge.
- Parish Council was still awaiting confirmation from NALC that the revised Code of Conduct had been adopted by Rushcliffe Borough Council (RBC).

• **Environment:**

- Roadside verges – Cllr Playle explained cutting regime required to encourage a bee friendly

roadside verge proposal for the verges around the 'elbow junction' on Bridegate Lane. In order to start this process, the grass needs to be cut and the cuttings removed. Cllr Cottee to be advised of required cuttings regime. Cllr Playle would like to sow wildflower seeds – will probably take approx. 5yrs for there to be an established wildflower area. Meeting has been sought with Via East Midlands Ltd to agree a practical Management Plan (Cllrs Neil Clarke and John Cottee asked to be copied into correspondence).

- Autumn litter pick – Sunday 30th October; equipment ordered & refuse to be collected from the lay-by opposite the cemetery on 31/10.

- RBC Tree Scheme: Cllr Lane has ordered the trees for the village (30/9/2022).

- Concerns raised about the security of the slurry lagoon at the top of Mill Lane.

• **Highways:**

- Air Ambulance/Heliport, Hickling Pastures: Cllr Lamb advised that the Air Ambulance does not fly during the hours of darkness. Air Ambulance representative unable to attend the meeting on 25/10 but will try to attend the next meeting. The owner of the Nottingham Heliport attended the meeting on the 25/10 and will try to address concerns at a future meeting when the Air Ambulance representative is present.
- Winter 2022/23 – 2022 requirements for salt/grit bins to be assessed and ordered. Cllrs Playle & Green agreed to take on the role of Snow Wardens for the parish.
- PSPO Dog Fouling signage ordered for Walkers' Green.

• **Assets:**

- Walkers' Green - Springer damage; the manufacturer reports that the damage is a natural crack which will contract when the weather cools. Monitoring will continue.
- Protruding bolts on gates at Walkers' Green to be made safe by Cllr Green.
- Plaques for the WI Black Poplar in the parish cemetery and the Oak Tree on Walkers' Green; purchase approved and Cllr Lane will liaise with the WI about wording.
- Cemetery; Ivy has been removed from the trees & the dead/dangerous tree in the cemetery has been removed.
- Noticeboard on the Clawson Lane/Main St junction has been removed & disposed of.
- Hortor's notice board: Mr Hortor is happy for the notice board in the vicinity of Sophie's Flowers to be moved to Hickling - Clerk to obtain quote for moving it to Hickling Village.
- Estimate to sand and apply protection (if required) to the 6 benches in Hickling - £195; councillors agreed to proceed & work commissioned.
- New cemetery chain link fence required to identify the non-consecrated part of the parish cemetery; posts will require resetting - quote to be obtained.

• **Community Engagement:**

- New website – update re. additional quotes for consideration by Councillors. Grants had been received for the new website £500, Cllr Lamb's son had offered his services to assist with the setting up of the website.
- Community Survey – awaiting printing costs for approval by councillors.

• **Correspondence:**

- Thank you card, received from the WI to thank the Parish Council for the £200 donation.
- On-line banking application had been refused again; previous clerk has contacted the bank on numerous occasions concerning this on-going problem. Clerk to look at moving banks.

• **Finance and Account balances:**

- See full Minutes on Parish Noticeboards and online.

• **Other items:**

- (27/9) It was agreed to trial starting meetings at 7pm in the future.

• **Date of next meeting, 6th Dec .**

- **2023 Meetings: 10th Jan, 28th Feb, 28th Mar, 9th May, 13th June, 25th July, 29th Aug, 3rd Oct, 14th Nov, 19th Dec.**

YOUR PARISH COUNCIL

The Parish Council is the lowest tier of local government and is made up of representatives living within the local community who have an interest in community matters and who make decisions on behalf of the Parish.

Your Parish Councillors are listed below with their positions of responsibility:

Simon Lane – (Chair) also, Environment simon-lane@tiscali.co.uk

Tracey Prosser – (Deputy Chair) also, Finance & Administration
tjprosser67@gmail.com

Steve Green - roles tbc steve.j.green@gmail.com

Chris Lamb—roles tbc c.m.lamb@me.com

Peter Playle – Environment/Highways & Street Furniture
peterplayle@hotmail.co.uk

Your Parish Clerk is Julie Holland and she can be contacted:

by email - hicklingparishclerk@gmail.com

by phone – 01949 823902.

The Parish Council is here to help; however, many issues encountered in the Parish, do not fall under the jurisdiction of the Parish Council and you should contact the relevant authority in the first instance to assist you.

PLEASE CONTACT NOTTS COUNTY COUNCIL:
www.nottinghamshire.gov.uk or call 0300 500 8080 - Monday to Friday 8am to 6pm for issues relating to:

Roads & pavements including obstructions and potholes/roadside verges/road gullies or drains/streetlight faults/trees on public land/bus services.

PLEASE CONTACT RUSHCLIFFE BOROUGH COUNCIL: www.rushcliffe.gov.uk or call 0115 9819911 for issues relating to:

Planning
Waste – including fly-tipping
Electoral matters.
Council Tax

If you have an issue and you are unsure of who can help, or a previously reported issue remains unresolved then contact the Parish Clerk.

If you wish to comment on a planning application:

You can comment online by searching for 'Rushcliffe Planning' - go to 'simple search' type in 'Hickling' and scroll to find the application.

Or you can write to:

Planning & Development
Rushcliffe Borough Council
Rushcliffe Arena
Rugby Road
West Bridgford
NOTTINGHAM
NG2 7YG

Always remember to quote the planning reference.

Please copy your comments to the Parish Council and Borough Councillor, Tina Combella so that we can take your views into account in our decisions.

Diary

2nd Dec	Plough Inn Christmas Market 4pm-8pm
3rd Dec	Plough Inn Christmas Market 11am-4pm
4th Dec	Village Hall Breakfasts 9-11am
4th Dec	Dove Cottage Carols with the Salvation Army
6th Dec	Parish Council Meeting—Village Hall—7pm
6th Dec	Church: Christmas Concert 7pm
10th Dec	Coffee with Santa—Kinoulton Village Hall—10am
15th Dec	Hickling WI 7.30pm Village Hall - Christmas wreaths & decorations.
16th Dec	WI Gift presentation (reading cushions for Ukrainian refugee children) VH
18th Dec	Carol Service, St.Luke's, Hickling 4pm
25th Dec	Christmas Morning Holy Communion, St. Luke's, Hickling - 10am.
8th Jan	Village Hall Breakfasts 9-11am
10th Jan	Parish Council Meeting—Village Hall—7pm
17th Jan	WI day trip to Palace of Westminster
28th Feb	Parish Council Meeting—Village Hall—7pm
10th March	Romans in Rutland—local history talk - Village Hall 7.30pm
18th March	WI Spring Fayre—Kinoulton VH 10.30am-3.30pm
18th April	WI daytrip to Thornbridge Hall & gardens and Matlock Bath
16th & 19th May	WI visit to recycling centre

Every Thursday at 10.30am: Coffee Morning in Church (please check venue during winter months)

Beaver Scouts 6-8 years, Tuesday 6.15-7.15pm; Cub Scouts 8-10.5 years, Monday 6.00-7.30pm; Scouts 10.5-14 years, Monday 7.30-9.00pm; Explorer Scouts 14-18 years, Tuesday 7.30-9.00pm

All at Kinoulton Village Hall

Contact for ALL sections: Susanne Youngson 0788 413 6890 gslkinoulton@gmail.com

Would you like to support the Hickling Standard with sponsorship?

Printing costs are an ongoing pressure for us but we are committed to delivering a free copy of the newsletter to every household in Hickling & Hickling Pastures.

We estimate that the costs are approx. £5 a year per household – great value for money!!

Please email a.terry125@btinternet.com if you are interested in making a small (or large!) contribution to our costs; payments can be made by bank transfer & we can include your name in a list of our supporters (or you can remain anonymous, if you prefer).

& thank you to those of you who already support us;

Hickling Parish Council Scarecrows Committee Samworth Foundation
Peter and Philippa Jacks. Adam and Donna Taylor
Ann Blades (PeaPod Nursery)
& all of our advertisers.

Village Directory:

150 Club	Liz Vear	822562	Kinoulton School PTF	Sarah Parris	01949 823925
Beavers	Susanne Youngson	07884 136890	Neighbourhood Watch	Chris White	822152
Bellringers	Lynn Irving	07388 348341	Nottinghamshire Police		
	lynn.irving74@gmail.com		Control Room; non-emergency number	101	
British Legion	Colin Henson	01949 81453	Parish Council:	Clerk—Julie Holland	01949 823902
Councillors	John Cottey (County)		e.mail: hicklingparishclerk@gmail.com		
	cllr.john.cottey@nottscc.gov.uk		Parochial Church Council		
	Tina Combella (Borough)		Rector	Maggie Woodward	01949 81183
Cricknet Club	TCombella@rushcliffe.gov.uk		maggie.woodward511@btinternet.com		
Cubs	P. Parkes	822370	Churchwarden	John Bloor	822682
Film Society	Susanne Youngson	07884 136890	Gill Bloor		822682
Gardening Club	Tim McEwen	822834	Treasurer	Alex Thomas	823420
	Mr B. Baxter	01949 81374	Secretary	Noel Woodward	01949 81183
Good Neighbours	Mrs B. Grundy	01949 81442	noel.woodward902@btinternet.com		
Scheme	Liz Vear	822562 or 07805 407229	Scarecrow Committee		
Guides	Kay Hand	822612	Karen Buckley (Chair)	07729 768366	
Hickling Pre-School	Alison Popplewell	01949 81604	Sally Jenkins (Secretary)	07971 520711	
Hickling Standard	Nick	07950 558608	Scouts	Susanne Youngson	07884 136890
History Group	see previous page		Table Tennis:	Alison Rowe - alison@rowepeople.net	
	Carol Beadle	822195	Vale Beaders	Elizabeth Evans	01949 81501
	Pauline Chell (fundraising)	822835	Village Hall	Barbara McEwen (Chair)	822834
	Jane Fraser	822845		Tim McEwen (sec.)	822834
Kinoulton School	Gill & John Bloor	822682	Village Singers	John Robinson (treas.)	822762
	Mr Simon Paramore (head)			Phillipa Jacks (bookings)	823622
	01949 81203			Lynn Irving	07388 348341
	office@kinoulton.notts.sch.uk		Women's Institute	lynn.irving74@gmail.com	
				Lynne Spencer (Secr.)	01159431008
				Carol Beadle (Treas)	01664 822195
				Pauline Chell (Trips)	01664 822835

Hickling Village Newsletter - Committee

Chair; Tim McEwen - tel. 822834 or tmcewen@globalnet.co.uk

Treasurer/Advertising;

Andrew Terry - tel. 822088 or a.terry125@btinternet.com

Jane Fraser - tel. 822845 or frasermjlk@outlook.com

Barbara McEwen - tel. 822834 or barbara.mcewen01@gmail.com

Please get in touch with any of us if you have any comments or suggestions; we would welcome any contributions for future issues - articles, opinions, reports, recipes, poems, brain-teasers - whatever you would like to see in print!

2022 Copy Dates:

Feb/March 15.01.23

April/May 15.03.23

Copy must be received before these dates to guarantee its appearance. Please note that the committee reserve the right to edit or omit any material submitted. Opinions expressed in published articles remain the responsibility of the author. Articles may be published anonymously but the committee does need to have details of authorship before publication. For details of our privacy policy, please ask any member of the committee.

COPY IN ANY FORM IS ALWAYS GRATEFULLY RECEIVED

e-mail address - frasermjlk@outlook.com

Advertising Rates (one advert for one year - 6 issues.)

Front inside cover - £65 Back cover - £80 Quarter page - £30

Half page - £45 Full page - £60

(enclose payment with copy for the advert and give to a committee member before the copy date.)

Charity, Village Events and Personal (wanted/for sale) adverts are FREE.

We are very grateful to everyone who supports the village through placing adverts in the newsletter - you make all the difference!

Hickling Standard - online edition

The Hickling Standard is also available as a pdf (pages now in the right order!) at:
www.hicklingnottslcalhistory.com/hickling-standard/

~~~~~

The Hickling Standard is printed by Adlards, The Old School, The Green, Ruddington: 0115 921 4863