



## **Mobile Car & Caravan Cleaning**

**Choose from... Car Wash • Mini Valet**

**• Mini Valet and Polish • Full Valet**

**Mobile Caravan Cleaning**

**Car Paint & Fabric Protection**

**Fully Mobile Service**

# **07949 518 366**

**www.smartvaletinguk.com**



**Look Smart, Be Smart, Call Smart!**

The

# Hickling Standard

Village Newsletter for  
Hickling and  
Hickling Pastures

8th e-issue August - September 2021





Pea Pod Day Nursery is a small, family run 29 place day nursery at Hickling Pastures, on the A606 between Melton and Nottingham, only a few yards from the A46 roundabout.



The nursery is split into 3 separate rooms which enables us to promote a home from home experience with a very friendly, warm environment and in our rural setting the children have the opportunity to explore open fields and have access to a number of different animals.

Our 11 place pre-school room is led by Amy who is a qualified Early Years Teacher.

We plan our daily activities around the EYFS and foster children's interests. Amy builds and challenges children's learning to ensure all children have the qualities to become good listeners, are friendly, happy, independent learners who have the confidence to have a try at everything! We ensure all children have the foundations in place for them to have the qualities to succeed with love for learning, ensuring the children have a smooth transition when starting school.

Call in to have a look around for more information, or ring Louise on 01949 81522



[www.peapod-daynursery.co.uk](http://www.peapod-daynursery.co.uk)

Pea Pod Day Nursery, Melton Road, Hickling Pastures, LE14 3QG



In 1996 the vision of a local young woman was brought to life through a lot of hard work, dedication, faith and - most importantly - support of the local community.

Dove Cottage was born and 25 years on is now a much-loved source of support for families living with life-limiting illnesses in the local area.

We want to continue providing this support but we need YOUR help!

*Introducing...*



**CAN YOU HELP US TO CELEBRATE OUR 25TH ANNIVERSARY BY RAISING £25,000??!**

Create your own challenge and raise money for Dove Cottage - it can be ANYTHING you want it to be, as long as it's themed around the number 25.

For more information and ideas visit

**[WWW.DOVECOTTAGE.ORG/CHALLENGE-25](http://WWW.DOVECOTTAGE.ORG/CHALLENGE-25)**







### **Garden party & family fun day**

To celebrate our silver anniversary, we are opening the hospice and inviting everyone to a fun-filled family day and garden party.

Come along and enjoy live music, arts & crafts stalls, plus activities for the children, including a treasure trail, glitter tattoos and lots more...!

Refreshments will be available, as well as goodies for the kiddies!

We want to celebrate with you in our 25<sup>th</sup> year, and invite you to wander around our beautiful gardens, take a tour of the hospice, and learn about its history and why our guests love us so much.

More exciting details will be announced soon...

**SAVE THE DATE!!!**

Where: Dove Cottage Day Hospice, Canal Lane, Stathern, LE14 4EX

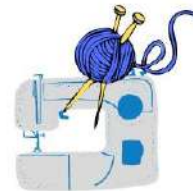
When: Sunday, 12 September, 11.30am-3pm

## *Calling all* **LOCAL CRAFT BUSINESSES**

Have you started a business during lockdown and want to spread the word?

Or maybe you just want the opportunity to remind people what you offer?

Would you like to showcase your products and support a local charity at the same time?



We're looking for stall holders for a fundraising event on 12th September

Email [FUNDRAISING@DOVECOTTAGE.ORG](mailto:FUNDRAISING@DOVECOTTAGE.ORG)  
or call 01949 860303 for more information



# Summer Holidays!

**Does anyone else get exasperated with the word 'staycation'?**

Apart from being a really ugly word (?!), surely it means taking a holiday from work but staying at home – going on holiday somewhere else in the UK is definitely a holiday.

This summer, bookings in the UK are like gold dust and you can't buy a caravan or motorhome or tent for love-nor-money (although wait for one wet UK summer and there will surely be lots of these for sale, quite cheaply ...). We are incredibly lucky to live where we do, here in Hickling, but here's to Summer holidays, anyway!



A beautiful strawberry garden, capable of being watered by a branch of the Itchen which comes close by it, and which is, I suppose, brought there on purpose. Just by, on the greensward, under the shade of very fine trees, is an alcove, wherein to sit to eat the strawberries, coming from the little garden just mentioned, and met by bowls of cream coming from a little milk-house, shaded by another clump a little lower down the stream. What delight! What a terrestrial paradise!

(William Cobbett)



## The Pomegranate Seeds.

Zeus immediately went down to the Underworld to fetch Persephone back. But the King of the Underworld was in no mood to take orders from the King of the Overworld.

'She stays, she is my Queen.'

'You dare to defy me?'

(cont'd)

Sonnet 18.

Shall I compare thee to a Summer's Day?  
Thou art more lovely and more temperate:  
Rough winds do shake the darling buds of May,  
And Summer's lease hath all too short a date:  
Sometime too hot the eye of heaven shines,  
And often is his gold complexion dim'd,  
And every fair from fair sometime declines,  
By chance, or nature's changing course, un-  
trimmed; But thy eternal Summer shall not fade,  
Nor lose possession of that fair thou ow'st,  
Nor shall death brag thou wander'st in his shade,  
When in eternal lines to time thou grow'st,  
So long as men can breathe, or eyes can see,  
So long lives this, and this gives life to thee.  
(William Shakespeare)

Summer Grass

My love-thoughts are like summer grass  
In these long days of rain:  
No sooner scythed and raked away  
But up they come again,  
Fiercely alive with all the coarse green energies  
of pain.

(anon. Japanese poem early 8th century BC)



(Pomegranate Seeds, cont'd)

'You are my younger brother,' said Hades. 'My youngest brother in fact. You have always had everything you've ever wanted. I demand the right to

keep the girl I love. You cannot deny me.'

'Oh can't I?' said Zeus. 'The world is in famine. The cries of starving mortals keep us awake. Refuse to return Persephone and you will soon discover the force and reach of my will. Hermes will bring no more spirits of the dead to you. Not one single soul shall ever be sent here. All will be despatched to a new paradise, or perhaps never even die. Hades will become an empty realm drained of all power, influence or majesty. Your name will become a laughing stock.'

The brothers glared at each other. Hades was the first to blink.

'Damn you,' he growled. 'Give me one more day with her and then send Hermes to fetch her.'

Zeus travelled back up to Olympus well pleased.

The next day Hades knocked on the door of Persephone's chamber. You might be surprised that he knocked, but the fact is, in her dignified and assured presence, even such a power as Hades found himself uncertain and shy. He loved her with all his heart, and although he had lost the battle of wills with Zeus he was sure that he could not let her go. Besides, he detected in (cont'd)



*(Pomegranate Seeds, cont'd)*

her something ... something that gave him hope. A small flicker of returned love?

'My dear,' he said with a gentleness which would have astonished anyone who knew him. 'Zeus has prevailed upon me to send you back into the world of light.'

Persephone raised her pale face and gazed steadily at him.

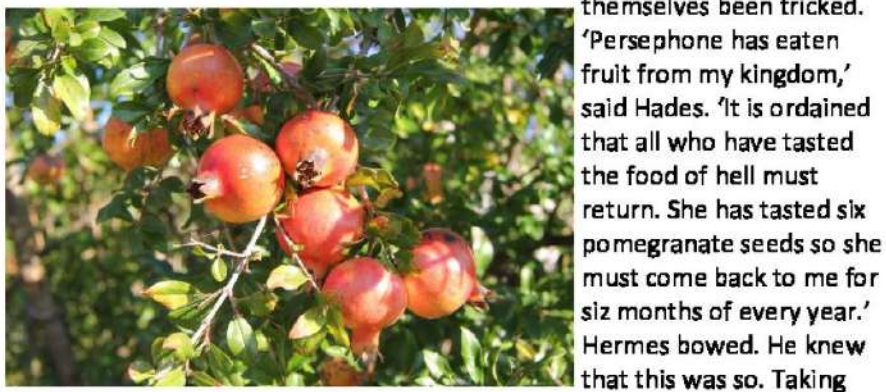
Hades gazed earnestly back. 'I hope you do not think ill of me?'

She did not reply, but Hades thought he could detect a little colour flushing her cheeks and throat.

'Share some pomegranate seeds with me to show there is no ill-feeling?'

Listlessly Persephone took six seeds from his outstretched hand and sucked slowly at their sharp sweetness.

When Hermes arrived the trickster god found that he and Zeus had themselves been tricked.



Persephone by the hand he led her up out of the underworld. Demeter was so overjoyed to see her daughter that the world immediately began to spring into bloom. It was a joy that was to last for half the length of the year, for six months later, in accordance with ineluctable divine law, Persephone was forced to return to the underworld. Demeter's distress at this parting caused the trees to shed their leaves and a dead time to creep over the world. Another six months passed, Persephone emerged from Hades' domain and the cycle of birth, renewal and growth began again. In this way the seasons came about, the autumn and winter of Demeter's grieving for the absence of her daughter and the spring and summer of her jubilation at Persephone's return.

As for Persephone herself ... well, it seems that she grew to love her *(cont'd)*

*(Pomegranate Seeds cont'd)*

time below as much as her time above. For six months she was no prisoner in Hades but the contented Queen of the Underworld, a loving consort who held imperious sway over the dominion of death with her husband. For the other six months she reverted to the laughing Kore of fertility, flowers, fruit and frolic. The world had found a new rhythm.

*(Mythos, The Greek Myths Retold by Stephen Fry)*

... and finally (courtesy of The Beano):





# HANWELL WINE ESTATE

**Award-winning English Wine from  
Nottinghamshire family vineyards est. 1979**



- ❖ Traditional method English Sparkling Wine
- ❖ White, Rosé, Cherry Wine & Mead
- ❖ Vineyard Experience: tour & wine tasting
- ❖ Gift vouchers
- ❖ Wine shop & Café open Sat 11am-4pm
- ❖ Self guided vineyard trail (Free)
- ❖ Weddings
- ❖ Private parties & Corporate hire
- ❖ Art & craft workshops

## Would you like to learn a new art or craft?

### Rural art, craft and skills workshops every weekend.

**September :** Duck Willow Weaving, Stained Glass, Whittling Course

**October :** Crochet Basket, Hare Workshop, Yoga Retreat, Spoon Carving

**November :** Bentwood Chair 2 Day, Felt Christmas Baubles  
Full details and bookings online



**Vineyard Experience** rated 5-star in customer reviews, dates from April. Private groups welcome.

**Book with Confidence** - Covid secure venue. Social spacing maintained throughout workshops and Vineyard Experience. Re-schedule or refund options if you/we have to cancel due to Covid.

Hanwell Wine Estate, Hickling Pasture, South Notts, LE14 3QG

hello@hanwellwine.co.uk Tel: 01949 81393 www.hanwellwine.co.uk

## HICKLING WI

WE ARE BACK - but with extreme caution! The last meeting was February 2020, but last week we held a picnic in the open-air catering area of the Hanwell Wine Estate taking our own refreshments and even masks. Thank you Helenka and Bill for hosting our event. About two-thirds of our members were able to attend and we had apologies from others so we were delighted. It was SO good to be able to talk face to face.



We have a programme until December when we will research the situation. Briefly it is as follows, but fuller details are posted on the WI notice board in front of the village hall.

19 August, 2 circular walks along the Canal, starting from The Basin 11am and 7 pm and finishing at The Plough, non-walkers, friends and family all welcome.

9 September. Have a go at bowls at Barnstone Balls Club. 4.45 pm. Pauline 822835 taking names and organising cars. 5 pounds.

14 October, 7.30 pm, Hanwell Wine Estate. Clog dancing. Have a go! Friends and family welcome too. Outside.

October. Grape picking. Anyone interested please give name to Pauline and the owners of the vineyards at Hickling Pastures and Costock will contact you. This is open to anyone. Instruction will be given. Good fun.

November 18. Meal at The Plough.

December 9th. Christmas celebration in the church.

Joining the WI is a great way of making new friends. Do join us. In normal times we are actively involved in village events, and even organise at least 2 coach trips each year. Phone me if you want more information.

Dorothy Chahal, President, tel. 822369.

**Samarpan Ashram Yog Meditation Centre - Long Acre**  
 Long Acre, Melton Road, Hickling Pastures, Melton Mowbray. LE14 3QG  
 (HMRC Charity No: EW19886)  
 website: [www.samarpanmeditationuk.org](http://www.samarpanmeditationuk.org)

**FREE** taught classes on Wednesday, Thursday and Saturday.

Wednesday 10.30am – 12.00pm (please check the website for up to date information)

**Hanwell Wine Estate**

Melton Road, Hickling Pastures, LE14 3QG

Contact number: 01949 81393

Please book online: [www.hanwellwine.co.uk](http://www.hanwellwine.co.uk)

Every Thursday and Saturday

1.00pm - 3.00pm ongoing 5 week or individual courses

**Samarpan Ashram Yog Meditation Centre - Long Acre**

Contact details:

Please ring Jaya Pisavadia (Centre Manager) to book meditation class at the centre.

If you would like us to visit your group and teach meditation then please contact

Hansa Heena Thoban (Education Manager)

Contact Number: 0194981103

## Mobile Foot Health Practitioner

Safe and effective treatment in  
the comfort of your own home

- Routine Nails Trimming
- Thick Nails & Ingrown Toe Nails
- Fungal Skin & Nails
- Hard Skin, Callous & Corns
- Cracked Heels
- Diabetic Foot Treatment
- Verrucae.



[www.tanyacomfyfeet.co.uk](http://www.tanyacomfyfeet.co.uk)

Excellent  
cosmetic  
result

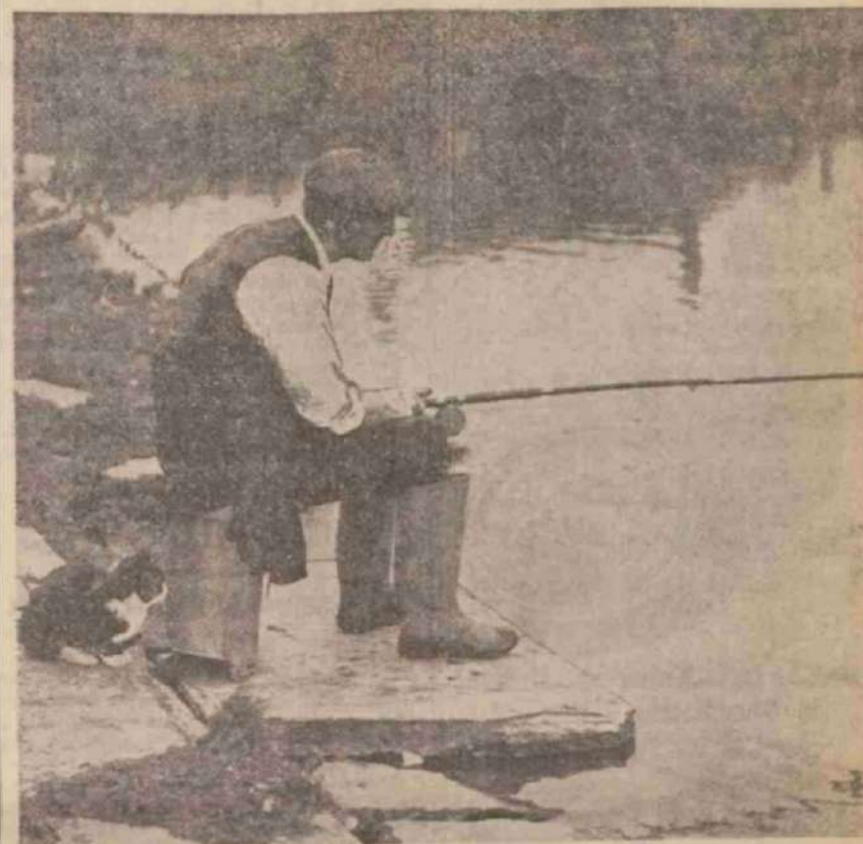
Tanya ☎ 07714876006

DipCFHP, MPSPract



The Nottingham Evening Post 21 February 1939

## A BLACK CAT FOR LUCK?



Min, a cat belonging to Mr. K. Flint, the Wharf House, Hickling, is an expert thief. She can steal a fish from an angler's hook before the catch is landed, and was thrown into the water last week by an irate fisherman from whom the cat had stolen a fish. Here she is waiting for a "bite."

## The Post Office

in Kinoulton Church

Opening hours:

every Wednesday 10am-12.30pm



## Heidi Burns Massage Therapy

For a happier, healthier, pain free you!



### Treatments:

Sports Massage  
Fascia Release Therapy  
Rossiter Stretching System  
De-stress head, neck and shoulders  
Assisted Stretching  
Yoga

Website: [heidiburnsmassagetherapy.com](http://heidiburnsmassagetherapy.com)

General Enquiries: [enquiries@heidiburnsmassagetherapy.com](mailto:enquiries@heidiburnsmassagetherapy.com)

Contact: 07757 707725

Facebook: HeidiBurnsMassageTherapy

### Locations

Main Street  
Hickling  
Melton Mowbray  
LE14 3AQ

Units 21/22  
Trent South Industrial Park  
Little Tennis Street  
Nottingham  
NG2 4EQ

## 200 year-old Sampler from Hickling on EBay ...

A recent enquiry to the Local History Group brought with it news of a sampler which was stitched in 1817 when Vashti Daft was ten years old. It is an Adam and Eve sampler and it appears to have been sold on Ebay in the United States (no date for the sale) but beyond that we know nothing – all we have is a rather poor quality image from an archived webpage. If anyone can help us with tracing what has happened to this beautiful piece of needlework since 1817, please **get in touch** with us; we are particularly curious to know where it is now and whether it would be possible to acquire a better image of it.

- Vashti Daft was baptised on the 5th April 1807 in Hickling, she died unmarried in London 21st March 1866 (her parents were Thomas & Bridget (Sutton) Daft).
- Census 1841 (Stanley Derbys); Vashti was in the household of Derbyshire farmer Henry Grundy, his wife and ten children. With her was her sister Salome's son George Hickling, age 15. Vashti was described as being of independent means. It would seem likely that they were visiting and that George lived, like his three siblings, with his maternal grandmother (Vashti's mother).
- Census 1851 & 1861 (Hickling); Vashti is the housekeeper in the household of her brother, Thomas – in 1851 her nephew George Hickling is also in the household.
- Vashti died unmarried from a "stomachic complaint" on 21st March 1866 aged 59yrs in London. She may have been visiting or living with her sister's son George Hickling, since he is recorded as living in St Pancras in 1861.

She was buried in Hickling Churchyard with her sister, Salome and her niece, Lila.  
([www.hicklingnottslocalhistory.com/daft-family/](http://www.hicklingnottslocalhistory.com/daft-family/))





# Squirrel Stores

*The biggest "little" shop in the Vale of Belvoir*



- ♦ Greeting cards and gifts
- ♦ Artisan jams, chutneys, honey etc
- ♦ Newspapers and magazines
- ♦ Wines, beers, local ales and ciders
- ♦ Freshly baked Hambleton bread and produce delivered daily
- ♦ Selection of butcher's meat produce and Melton Mowbray pork pies
- ♦ Local cheeses
- ♦ Large variety of fresh fruit and vegetables (personal weekly fruit delivery and veg boxes available)
- ♦ Dry cleaning service
- ♦ Fresh sandwiches, sausage rolls, samosas etc
- ♦ Hand tied bouquets

*Opening hours:*

*Monday to Friday 7am to 7pm*

*Saturday 7am to 5pm*

*Sunday and Bank Holiday 8am to 1pm*

*01664 822315*

*The Sands, Long Clawson*

## Your Help Needed!

We hope to be able to begin our meetings and events again soon but even during the turbulence of the last year and a bit, we have been so pleased with how much interest there is in Hickling's local history.

Please contact us:

- If you would like to **join the group** and get involved.
- Do you have experience of **family or local history research** or simply want to learn a bit about it? Please contact us.
- Can you help us out with **transcribing**? There are two types; (1) straight **typing up** of modern documents/text (2) transcribing older documents (Deeds, for example). We are in **urgent need of some help** in this area!
- Can you help us with our **oral history** project? We would like to record interviews with anyone who wishes to talk about their life in Hickling or we would love to receive copies of your **written memories**.

Please email us at; [info@hicklingnottslocalhistory.com](mailto:info@hicklingnottslocalhistory.com)

Or speak to one of us: Carol Beadle, Dorothy Chahal, Gill & John Bloor, Pauline Chell, Jane Fraser, Roger & Pam Stanley.



[www.hicklingnottslocalhistory.com](http://www.hicklingnottslocalhistory.com)

Local History Group  
**Hickling**  
Nottinghamshire





**LADY FRIDAY** Are you short of TIME?

I could support you when you're working or on holiday

**PETS**  
Regular or occasional dog walking & pet care at your home

**CHILDREN & ELDERLY RELATIVES**  
Meet children from school or take them to their recreational activities\*  
Accompany elderly relatives to appointments or shopping, or whatever

**HOME**  
Water plants, take mail in & generally check all is well

Do not hesitate to ask - I am mature and versatile!  
References available on request, Inc DBS\*

Angela Sallis, 6 Melton Road, Long Clawson, LE14 4NR  
01664 822597 angela\_sallis@btinternet.com

**1**  
**FIT**

## AEROBICS AND TONE

Low impact.  
Fun and friendly.  
All ages and abilities welcome.

Great way to get active.

Every Wednesday 9.15am.  
Free drink at the Old Wharf  
after the class.

## KETTLEBELLS

Fat burn and conditioning.  
Full body toning.

For those looking to improve fitness levels.

Every Thursday 7pm

**For information and class locations call James on 07849 329221**



## Places now available for the Autumn Term from 2<sup>nd</sup> September 2021!

Are you looking for local and experienced childcare? We have a wonderful team of qualified and enthusiastic staff based in the Hickling Village Hall.

We are open Monday to Friday 09:15 - 15:15 for children aged 2-5 years and our fees are only £4.30 per hour. No minimum hours per week required, flexible arrangements available.

We accept 15 or 30 hours of government funding, childcare vouchers, and are also registered for the government's Tax-Free Childcare program.

We have close links with Kinoulton Primary School and offer termly visits up to school to help prepare the children for the transition to 'big school'.

For children aged 3+, wrap around care is available from The Village Hideout at Kinoulton Village Hall during term time (7.15am – 6pm). They provide transportation to and from the Pre-School, so ideal for working parents!

We can offer free 'taster' sessions for all new starters, please call the pre-school on 07950558608 or email hicklingpre-school@gmail.com for more information.

**Check out our website: [www.hicklingpreschool.co.uk](http://www.hicklingpreschool.co.uk) for more information, or follow us on Facebook – just search for us!**

We hope to organise some special events for all our children and families as soon as restrictions are lifted! We have missed everyone dreadfully during the pandemic.



## 2021 CHURCH SERVICES (Sundays unless stated)

Date	Kinoulton		Hickling		Upper Broughton	
	Time	Service	Time	Service	Time	Service
Aug 1 St Oswald	9.00am	Holy Communion	6.30pm	Evening Service	11.00am	Holy Communion
Aug 8	11.00am	Morning Prayer	9.00am	Holy Communion	10.00 am	Morning Prayer
Aug 15	9.00am	Holy Communion	10.00am	Morning Prayer	11.00am	Morning Prayer
Aug 22	11.00am	Morning Prayer	6.30pm	Holy Communion	9.00am	Holy Communion
Aug 29		no service	10.00pm	Holy Communion Benefice Group Service		no service
Sept 5	9.00am	Holy Communion	6.30pm	Evening Service	11.00am	Holy Communion
Sept 12	11.00am	Morning Prayer	9.00am	Holy Communion	10.00 am	Morning Prayer
Sept 19	9.00am	Holy Communion	10.00am	Morning Prayer	11.00am	Morning Prayer
Sept 26	11.00am	Morning Prayer	6.30pm	Holy Communion	9.00am	Holy Communion

## Ramblings from The Rectory

As some of you may be aware I have not been able to take services at our three churches for several weeks initially due to Covid shielding which was followed by a double dose of Shingles on my face and in my hair. For those of you who have not had shingles please don't, it is very, very painful.

During my time away from church and family during the Covid pandemic, my operation and illness I, like many of you, suffered periods of isolation and at times loneliness. It has been very much a learning curve for all of us finding new activities and pastimes to keep us busy. My husband now knows the pathways around the village like the back of his hand and has managed to complete most (but not all) of my "things to do around the house" list. I have read some of those books on my ready to read list and we have both spent many hours pottering around the Rectory garden; mine being more of a supervisory role! Some people learnt new skills, some wrote that book that we all have inside us, some caught up with those jobs we always wanted to get done and some struggled to come to terms with the isolation of being alone. Isolation is what you make it and it can lead to self awareness, the emergence of new skills but it can also lead to crippling depression.

There are many instances of people throughout history either isolating themselves or being forcibly isolated and I often wonder what some of them did to pass the time, or even to keep themselves sane. The hermits of old who would wander out into the desert or into the hills to be at one with God, the political prisoners forcibly isolated away from rocking the political boat and those who had to hide away to avoid capture. Ann Frank wrote a diary, Nelson Mandela who dreamt of a fairer South Africa whose said "A winner is a dreamer who never gives up" and of course our Lord Jesus Christ.

Jesus too spent periods of his life isolated away from others. He needed thinking time and time to reflect on what was to come; His 40 days away in the desert being tempted by The Devil and His preparation for his own crucifixion to name but two. Jesus came back strong and full of confidence for what was to come. Sadly not all of us can do the same, there are people who have found the last 18 months or so very difficult indeed and they need much help and rehabilitation to be able to take their part in society again. To them we pray for their recovery and we remember that they, and we, are never alone. Jesus is always there, He dwells within us and will always help, often without being asked.

Sometimes we all need that space to develop, to grow, to think, to be on our own, to find that time to recharge our batteries and gain a better understanding of who and where we are, and where we want to be. There is the story of Jonah in the Old Testament of the Bible whose ship-mates threw him off the boat, as they thought his disobedience to God was causing the storm which was about to wreck their ship. Jonah survived by being swallowed by a whale and spent a good period of time isolated inside the whale. I sure we can all imagine what his thoughts were! The primary theme of the story of Jonah and the Whale is that God's love, grace, and compassion extends to everyone, even outsiders and oppressors. God loves all people.

By the time you read this message I should be back at work, back at my churches, back planning baptisms, weddings and funerals and should you need to contact me my details are below. It doesn't have to be about a baptism, a wedding or a funeral; you can contact me for a chat, for advice, for help, and anything you say to me will be in confidence should you wish it to be so.

May God send his light to guide you all.  
Rev Maggie

[maggie.woodward511@btinternet.com](mailto:maggie.woodward511@btinternet.com) Rectory phone 01949 81183



## STEVEN M. DAW

PLUMBING, HEATING and GAS SERVICES

Plumbing work – repairs; Central heating and boiler installations; Boiler servicing; Central heating power flushing; Bathroom design and installation

Over 30 years experience

Based in the Vale of Belvoir

Tel: 01664 822648 - Mobile: 07860 285031

Email: [stevendaw@btinternet.com](mailto:stevendaw@btinternet.com)

[www.stevendaw.com](http://www.stevendaw.com)



## DAVID HEWITT AERIAL SERVICES

TV/DAB/FM/DIGITAL  
AERIALS FITTED &  
REPAIRED

digital

Freeview

TV/DVD/VCR TUNERS

LOCAL SERVICE EST 32 YEARS



FREE QUOTES  
ALL AREAS COVERED

SPECIAL RATES FOR PENSIONERS & DISABLED

**Call 01664 820430**

Corner Cottage, Clawson Lane, Hickling LE14 3AB



Yve  
Complete Foot Health Care

Mobile foot health practitioner,  
MCFHP, MAFHP.

Fully qualified and insured.

Foot and nail problems  
assessed and treated to include:  
thick damaged nails, ingrowing  
toe nails, callous/hard skin, re-  
moval of corns, verrucas.

For appointments/enquiries/full  
price list 'phone 07875 733039

## I WEAR MY MASK IN PUBLIC FOR THREE REASONS:

1. **HUMILITY:** I don't know if I have COVID as it is clear that people can spread the disease before they have symptoms.
2. **KINDNESS:** I don't know if the person I am near has a child battling cancer, or cares for their elderly mom. While I might be fine, they might not.
3. **COMMUNITY:** I want my community to thrive, businesses to stay open, employees to stay healthy. Keeping a lid on COVID helps us all!



## Sarah Woodhouse Fitness in the Vale

KETTLERCISE- one piece of equipment, one goal, fat loss just got simple! A fun and effective way to challenge your body, change your shape and improve your fitness - come and try it out! Open to all aged 16 and over

LADIES' FITNESS SESSIONS

PERSONAL TRAINING

Contact Sarah for details  
[www.sw-personaltrainer.co.uk](http://www.sw-personaltrainer.co.uk)

## DAVID HEWITT AERIAL SERVICES

**TV/DAB/FM/DIGITAL  
AERIALS FITTED &  
REPAIRED**

digital ☒

Freeview

**TV/DVD/VCR TUNERS  
LOCAL SERVICE EST 32 YEARS**



**FREE QUOTES  
ALL AREAS COVERED**



**SPECIAL RATES FOR PENSIONERS & DISABLED**

**Call 01664 820430**

Corner Cottage, Clawson Lane, Hickling LE14 3AB



**Hickling (Notts) Local History Group**

**[www.hicklingnottlocalhistory.com](http://www.hicklingnottlocalhistory.com)**

follow us on:



## Nevile Ward Summer News letter From Cllr. Tina Combella

### NO MOW

Rushcliffe Borough Council is trialling a number of 'No Mow' areas across the Borough to act as summer pollinator sites and encourage wildlife and habitats to thrive even further.

*The authority's Grounds Maintenance contractors Streetwise are now not mowing selected areas across the Borough to help create natural corridors to support and enhance local wildlife.*

This sustainable management of the open spaces helps to not only mitigate the impact of climate change but supports the Council's Carbon Clever initiative and its commitment to become carbon neutral by 2030.

"We're keen to protect our environment in line with our corporate priorities wherever we can and these sites will now be monitored to see how they help wildlife and habitats to thrive.

"If successful, we'll consider other sites too and we want to hear residents' views on how we manage our open spaces so please have your say in our consultation."

### Summer Pollinator Survey

The online summer pollinator survey is also now available for residents to give their views on how these spaces are managed at <https://bit.ly/364kAri> until September 30.





Tree Felling  
Lopping,  
Pruning,  
Ground  
Clearance,  
Tree Surgery,  
Fencing,  
Planting,  
Logs,  
Wood  
Chipping,  
Hedges  
Maintained.

Fully Insured

Tel. 01664-822471



**Keith Wadkin & Son**  
**Tree Specialist**  
Hickling  
Melton Mowbray, Leics.  
LE14 3AQ

Established 1959

**R & E L Birley Motor Engineers**

East End, Long Clawson. Telephone 01664 822450



**Approved MOT testing station.**



**Servicing and repairs on car & commercial vehicles.**



**Tyres, balancing, punctures & wheel alignment.**

**Accident and breakdown recovery service.**

**Forecourt sales for Petrol, Diesel & Oils etc.**



**Established in Long Clawson for over 40 years.**

E-mail: [birleys@long-clawson.com](mailto:birleys@long-clawson.com) Web page: <http://birleys.long-clawson.com/>

### **Fake emails, texts and calls**

#### **How to protect yourself**

Check wording of address and language

Are there spelling errors

Mark all unwanted e mails as junk or phishing before deleting

Don't click or download attachments – type web addresses into the address bar

Don't rely on caller ID this can be manipulated – if unsure hang up and call back some time later

Keep software up to date

Never let anyone else use your device.

Use 2 factor authentication to secure your accounts and e mails

Don't use the same password

Never give personal information or password details over the phone if you have not initiated the call. Always ring back on a recognised number.

### **RURAL CRIME**

This is particularly relevant in the Nevile Ward Villages –

There has been a spate of thefts on the Rushcliffe/Leicestershire border involving considerable lengths of telecommunications cable, and electronic control equipment and GPS devices from farm machinery. There has also been a rise in catalytic converter thefts.

I therefore urge everyone to make sure their vehicles and equipment are well secured.

Our new Crime Commissioner Caroline Henrey is aware of our concerns and pledged to work with the police to set up Rural Crime units.

Stay vigilant and report all suspicious incidents, no matter how minor on

101

### **GRANTHAM CANAL WATER RESTORATION GROUP**

Continues to attract support and raise money to deal with the leaks in the Canal affecting Kinoulton, Hickling and Cropwell Bishop.

Mike Hill from Kinoulton recently raised over £2000 by cycling 70.4 miles for his 70<sup>th</sup> birthday, taking in the canal towpaths.

Keep an eye out for the posters with other fund raising events in the villages as



# Faulks Plant Hire

Reliable • Available • Quality

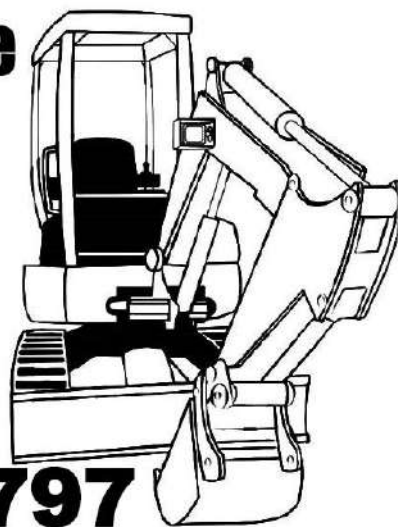
Suppliers of ...

- Mini Diggers
- Site Dumpers
- Compaction Equipment

To discover more visit ...

[www.aefaulks.co.uk](http://www.aefaulks.co.uk)

**01664 822797**



The Wharf, Main Street, Hickling, Melton Mowbray, Leicestershire LE14 3AH



**YOUR LOCAL INDEPENDENT  
DRY CLEANING SERVICE**

- Repairs and Alterations
- Day and Evening Wear
- Silks and Wedding Dresses
- Duvet, Eiderdowns and Sleeping Bags
- Laundered Shirts Service
- Free Removal, Collection and Re-Hanging of Curtains

13 Main Street, Keyworth, Nottingham NG12 5AA. Tel: (0115) 937 6599

we come out of lock down.

## COVID

As we move towards July 19th, when we expect restriction to be lifted, we will be doing a big push to vaccinate all eligible cohorts, with a particular focus on 18-39-year-olds. It is really important that the younger groups come forward for a vaccine to protect themselves from the Delta variant and to protect their family and friends.

## Interesting facts

Vaccines have prevented 7.1million infections and 27,200 deaths in England (Source: PHE)

92.1% of people that tested positive for the Delta variant in UK hadn't had both doses of the vaccine\*\*

89.1% of people that tested positive for the Delta variant in UK were under 50\*\*

\*\* In England between 1 February and 21 June – source PHE

## Hospital Update

We have seen 45 admissions relating to Covid-19 in the seven days to 4 July, which compares to 35 in the previous 7-day period.

We had 32 beds occupied by Covid+ patients on 6 July, this compares to 30 on 29 June.

Of those 32 beds, 28% (9 beds) were mechanically ventilated.

In the week from 1-7 July there were 2 deaths, which compares to zero the previous week.

\*\* These figures are for Nottingham University Hospitals, Sherwood Forest Hospitals, Nottinghamshire Healthcare NHS Trust and Bassetlaw Hospital

**The big message is –  
act responsibly to protect, yourself, your family and others  
so we can all have a good summer.**

**Cllr Tina Combellaack**  
**Cllr.tcombellaack@rushcliffe.gov.uk**



## 70 At Seventy



A big thank you to all the generous folk who donated towards the 70 At Seventy charity bike ride in aid of the Grantham Canal Water Restoration Group. After a few postponements, due to poor weather, I managed to complete the 70 miles on the 27th May, the weather was kind to me, no cold easterly winds and no rain, perfect.

We raised £2065.00 which has been passed over to the Grantham Canal Society,

who will allocate the moneys towards repairs to our canal, Hickling, Kinoulton and Owthorpe to stop the leaks, we should be seeing some activity in the very near future.

Again a big thank you and please, if you have any ideas for future charity events or can help in any way please email - [gcwrg@yahoo.com](mailto:gcwrg@yahoo.com).

Mike Hill



## Summer walks with your dog!

Last week I had a client who was terrified her dog was going run off - he would not come back when she called. Yes, if there was nothing more interesting but a whiff of scent and he was gone. She had tried shouting loudly, jumping up and down, running in the opposite direction and even hiding in an effort to persuade him to come back.

She had stopped letting Winston off the lead as she couldn't trust him.

We worked together introducing leadership concepts and dog psychology to help her understand why Winston was ignoring her and how to engage with him.

I'm so pleased to tell you that Winston and his owner are really enjoying their walks together now and his recall is spot on.

Here are a couple of pointers to improve your recall:

1. Train your dog to the whistle, it is insistent and carries when the wind is against you.
2. Keep your dog on a long line until you can trust them to come back.
3. Never ask your dog to sit before rewarding with a treat - your dog should understand that coming back earns the reward.
4. Be Interesting! The fun should happen with you rather than with other dogs or humans.
5. Make yourself a big target to come back to, throw your arms wide and as your dog comes in take a few steps back - your dog will just keep on running in.

If you would love to see your dog safely off lead do let me know and you can enjoy your walks this summer.

Lynne Marshall  
0778 6638171

[www.loveyourdog.org.uk](http://www.loveyourdog.org.uk)  
fb loveyourdog1



# Vale Electrics

## Electrical Contractors

Specialists in all types of Industrial,  
Commercial and Domestic Installation

Unit 9 Old Dalby Trading Estate, Station Road, Old Dalby  
Leicestershire LE14 3NJ

Telephone (01664) 822 217

National Inspection Council for  
Electrical Installation Contracting

**NIC EIC**

APPROVED CONTRACTOR



## A.R. PEET LIMITED

Specialist Retailer of Wood, Gas, Electric and Multifuel  
Stoves

Tel: 01664 822397

[www.arpeetstoves.co.uk](http://www.arpeetstoves.co.uk) [info@arpeetstoves.co.uk](mailto:info@arpeetstoves.co.uk)

HOME FARM, MAIN STREET, HICKLING

## Mobile Foot Health Professional

Fully qualified and insured. Foot and nail problems fully assessed and treated, treatments include - Thick damaged nails, ingrowing toe nails, removal of corns, calluses and verruca care. All treatments carried out in the comfort of your own home.



### Discounts for group bookings

Please call Nicola MCFHP on 07391 316998, if unavailable please leave a message

Local History Group

## Hickling Nottinghamshire



CALENDAR  
2022



On Sale Now!

~

£7.50

Themed Calendar:  
Animals and Wildlife of Hickling  
Photographs old & new

Call: Pauline 01664 822835  
[www.hicklingnottslocalhistory.com](http://www.hicklingnottslocalhistory.com) or  
email; [info@hicklingnottslocalhistory.com](mailto:info@hicklingnottslocalhistory.com)



Thank you to  
everyone who  
sent in their  
photographs -  
full gallery on  
the website!



## Hickling Women's Institute

The Grantham Journal reported the first meeting of the joint Hickling and Kinoulton Women's Institute on 16th February 1935 with Mrs Foster of Hickling (the wife of the Rector) as President, she was elected by ballot. "Meeting Hickling Institute Thursday to enrol members, social evening following. New Institute would belong to Wolds Group."

A year later, at the first annual meeting, it was announced that Kinoulton would be forming its own branch. Hickling Women's Institute continued until 1940 but took a break during WWII, re-forming in 1947. In 2017 the Hickling WI received a certificate from the National Federation marking 70 years of continuous membership.

We plan to expand our history of the WI in Hickling; if you have any information or photographs that you would like to add, please get in touch.

A survey of 1,000 WI groups in 2001 concluded that members volunteered close to 3.5million hours every year and as their centenary was celebrated in 2015 there were over 200,000 members in 6,500 Institutes. Most of all, a campaigning independent spirit characterises the organisation; whether it is the 'Calendar Girls' of Rylstone WI or the slow hand clap at an AGM when members objected to Tony Blair's use of the platform to make a party-political speech ...

"The WI is a force to be reckoned with and is here to stay" (Countryfile).

Our new website page includes a history of the Women's Institute nationally; its origins in Canada and then the Suffragette Movement as well as its aims to promote causes affecting women - originally in rural communities but increasingly all women nationally and internationally. The list of achievements is genuinely impressive and must be a huge source of pride for members past and present. The WI remains a democratic, bottom-up organisation, maintaining its focus in the communities that it serves (a lesson perhaps for many national organisations in these times).



Please visit the Hickling local history group website for names and dates:

[www.hicklingnottsllocalhistory.com/wi.womens-institute/](http://www.hicklingnottsllocalhistory.com/wi.womens-institute/)



**Paws 4 Thought**

Does your dog need exercising ? Cat need feeding ?  
 Going on holiday or working longer hours ?  
 We can help with dog walking, Pet home visits  
 Small animal and dog boarding in our home  
 House sitting, collection & delivery service for your pet


**Call Sally or Martin**

**01664 823844 or 07890 889915**


**www.paws4thoughtolddalby.co.uk**

**National pet sitter registered and insured including CRB.**

**For all your pet requirements**




# WILLIAM HERCOCK



**FOR ALL YOUR BUILDING  
AND DIY SUPPLIES**

SLABS ❖ AGGREGATES  
 WALLING ❖ CEMENT  
 BRICKS ❖ BLOCKS  
 ROOFING ❖ FENCING

ANY AMOUNTS CATERED FOR



**FULL RANGE  
COAL &  
SMOKELESS FUEL**

for delivery  
or collection

**MON - FRI: 7.30am - 5.00pm / SAT: 8.00am - 12.30pm**

The Depot Airfield  
 Dalby Road  
 Melton Mowbray

Tel: 01664 500947  
 Fax: 01664 410650

# Village Directory

150 Club	Liz Vear	822562
Beavers	Susanne Youngson	07884 136890
Bellringers	Lynn Irving	07388 348341
	lynn.irving74@gmail.com	
British Legion Councillors	Colin Henson	01949 81453
	John Cottee (County)	
	ellr.john.cottee@nottscc.gov.uk	
	Tina Combellaack (Borough)	
	TCombellaack@rushcliffe.gov.uk	
Cricknet Club	P. Parkes	822370
	JD Walker	822244
Cubs	Susanne Youngson	07884 136890
Film Society	Tim McEwen	822834
Gardening Club	Mr B. Baxter	01949 81374
	Mrs B. Grundy	01949 81442
Good Neighbours Scheme	Liz Vear	822562
	or 07805 407229	
Guides	Kay Hand	822612
Hickling Pre-School	Alison Popplewell	01949 81604
Hickling Standard History Group	Nick	07950 558608
	see back inside cover	
	Dorothy Chahal	822369
	Carol Beadle	822195
	Jane Fraser	822845
	Gill & John Bloor	822682
Kinoulton School	Mr Savage (head)	
Kinoulton School PTF	Sarah Parris	01949 823925
Neighbourhood Watch	Chris White	822152
Nottinghamshire Police	Control Room	
Parish Council	Non-emergency number	101
Parochial Church Council	Jo Cartmell (Clerk)	822866
Rector	Maggie Woodward	01949 81183
	maggie.woodward511@btinternet.com	
Churchwarden	John Bloor	822682
Treasurer	Gill Bloor	822682
Secretary	Alex Thomas	823420
Scarecrow Committee	Dorothy Chahal	822369
	Karen Buckley (Chair)	07729 768366
	Sally Jenkins (Secretary)	07971 520711
Scouts	Susanne Youngson	07884 136890
Sunday Club	see PCC	
Vale Readers	Elizabeth Evans	01949 81501
Village Hall	Jackie Haynes	822364
	Barbara McEwen (Chair)	822834
	Tim McEwen (sec.)	822834
	John Robinson (treas.)	822762
	Phillipa Jacks (bookings)	823622
Village Singers	Lynn Irving	07388 348341
	lynn.irving74@gmail.com	
Women's Institute	Dorothy Chahal (Pres.)	822369
	Carol Beadle (Treas.)	822195



## Diary

*All events subject to the Coronavirus situation*

19 August	11+7	Basin	WI - circular walks, all welcome
9 September	4.45	Barnestone	WI - Bowls
14 October	7.30	Hanwell	WI - Clog dancing
18 November		Plough	WI - meal
9 December		St Luke's	WI - Christmas celebration

Beaver Scouts 6-8 years, Tuesday 6.15-7.15pm; Cub Scouts 8-10.5 years, Monday 6.30-8.00pm; Scouts 10.5-14 years, Monday 7.30-9.00pm  
All at Kinoulton Village Hall  
Contact for ALL the sections is through Susanne Youngson 0788 413 6890  
gslkinoulton@gmail.com



## Hickling Village Newsletter - Committee

**Chair; Tim McEwen** - Tel. 822834 or [tmcewen@globalnet.co.uk](mailto:tmcewen@globalnet.co.uk))

**Treasurer/Advertising; Andrew Terry** } Tel. 822088 or

**Copy & Secretary; Maggy Jordan** } [a.terry125@btinternet.com](mailto:a.terry125@btinternet.com)

**Copy Collection; Jane Fraser** - Tel. 822845

Please get in touch with any of us if you have any comments or suggestions. We would welcome any contributions for future issues - articles, opinions, reports, recipes, poems, brain-teasers - whatever you would like to see in print!

### 2021/22 Copy Dates;

October/November 15.9.21 December/January 15.11.21

Copy must be received before these dates to guarantee its appearance.

Please note that the committee reserve the right to edit or omit any material submitted. Opinions expressed in published articles remain the responsibility of the author. Articles may be published anonymously but the committee does need to have details of authorship before publication.

**If you are submitting articles ready for publication - (either typed or in computer format) we would be grateful if you could send it in A5 size.**

**COPY IN ANY FORM WILL BE GRATEFULLY RECEIVED**

e-mail address - [a.terry125@btinternet.com](mailto:a.terry125@btinternet.com)

- **please make sure that attachments are sent in Microsoft Word or Publisher compatible formats.**

### **Handwritten Contributions.**

If you have handwritten contributions please pass them for typing to:

Jane Mill Lane Cottages

Otherwise please continue to pass any contributions or ideas to any of the other committee members. Thank You!

### Advertising Rates (one advert for one year - 6 issues.)

Front inside cover - £65      Back cover - £80      Quarter page - £30

Half page - £45      Full page - £60

(enclose payment with copy for the advert and give to a committee member before the copy date.)

**Personal wanted/for sale adverts are FREE.**