



## **Mobile Car & Caravan Cleaning**

*Choose from... Car Wash • Mini Valet*

*• Mini Valet and Polish • Full Valet*

**Mobile Caravan Cleaning**

**Car Paint & Fabric Protection**

**Fully Mobile Service**

**07949 518 366**

**[www.smartvaletinguk.com](http://www.smartvaletinguk.com)**



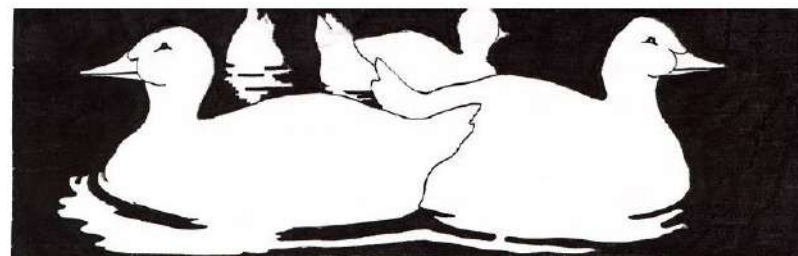
**Look Smart, Be Smart, Call Smart!**

The

# Hickling Standard

Village Newsletter for  
Hickling and  
Hickling Pastures

2nd e-issue August - September 2020







Pea Pod Day Nursery is a small, family run 29 place day nursery at Hickling Pastures, on the A606 between Melton and Nottingham, only a few yards from the A46 roundabout.



The nursery is split into 3 separate rooms which enables us to promote a home from home experience with a very friendly, warm environment and in our rural setting the children have the opportunity to explore open fields and have access to a number of different animals.

**Our 11 place pre-school room is led by Amy who is a qualified Early Years Teacher.**

We plan our daily activities around the EYFS and foster children's interests. Amy builds and challenges children's learning to ensure all children have the qualities to become good listeners, are friendly, happy, independent learners who have the confidence to have a try at everything! We ensure all children have the foundations in place for them to have the qualities to succeed with love for learning, ensuring the children have a smooth transition when starting school.

**Call in to have a look around for more information, or ring Louise on 01949 81522**



Pea Pod Day Nursery, Melton Road, Hickling Pastures, LE14 3QG



The Dove Cottage charity shops and Stathern tea room are now open!

The tea room is open for takeaway orders with a new menu and outside seating in our lovely garden, and all five shops have great selections of clothes, bric-a-brac and homeware.

The tea room is open every day from 10:00am – 3:00pm and the charity shops are open Monday to Saturday, but with different hours – please see <https://www.dovecottage.org/dove-cottage-charity-shops-reopening/>

Over the past few weeks, we've been working on procedures to keep our customers, staff and volunteers safe, whilst providing the best shopping and foodie experience.

We look forward to welcoming you to our charity shops and tea room soon!



## VILLAGE HALL NEWS

### RE-OPENING

We shall be re-opening the Hall in September. As an essential service Pre-School will be returning and other regular users of the Hall have been contacted to see if, or when, they might like to come back.

We have put into place a range of measures, required by the government and our insurers, to make things as safe as possible. In return hirers are asked to comply with a number of actions to maintain safety. These will be on an additional hiring sheet to be signed as a binding agreement.

Please contact the Booking Secretary or me if you would like to find out more about this.

### IMPROVEMENTS TO THE HALL

Although life seemed to be at a standstill during lockdown we managed to use some of the time productively.

The planters have been re-done and the plants are filling out really well. With luck the display will last us well into the autumn.

Inspired by Scott Hetherington's efforts at the Basin a group of (suitably distanced) committee members and volunteers spent two weeks scraping down and repainting the Village Hall railings, gates and litter bin, fortified by tea, coffee and cake. Under the top layer of peeling black paint we found layers of different colours, including bright green and turquoise. There was also red which may have been an undercoat or primer. It would be interesting to know when these date from. If anyone can remember when these colours last saw the light of day do let someone on the committee know. In the meantime the railings, gates and bin are now black. We have also repainted and mended the two notice boards.



A big thank you to everyone who gave up their time to help and make what could have been a tedious chore into something really quite enjoyable. Special thanks must go to Harry, who very kindly re-hung one of the gates and also made new latches for two of them.

Currently work has begun on the next stage in our programme of improvements to the Hall. James from 1Gardens is taking out the crumbling tarmac from the entrance area to put down paving. The memorial bench for Gwen Cane will be positioned against the side wall in a sunny spot, with a planting area next to it. Here we intend to put a small tree underplanted with bulbs. There will also be narrow beds for flowering and evergreen shrubs against the railings. The central drain cover will be raised so we don't have to hide it under a planter to stop people falling down the dip.

### 150 CLUB

Those of you who belong to the Hall 150 Club will notice that you haven't been asked for your money this year. For the safety of all concerned we have not wanted our collectors to go door to door. We hope to resume collection next year. We have some members who prefer to pay by Standing Order and it may be that more of you would like to use this option, particularly as we are becoming an increasingly cash free society. Whatever your decision we are extremely grateful for your continued support.

Let's hope that it won't be too long before we can return to some sort of normality and enjoy using the Hall again for all the many activities that take place there.

Barbara McEwen



**Samarpan Ashram Yog Meditation Centre - Long Acre**  
**Long Acre, Melton Road, Hickling Pastures, Melton Mowbray. LE14 3QG**  
**(HMRC Charity No: EW19886)**  
**website: [www.samarpanmeditationuk.org](http://www.samarpanmeditationuk.org)**

**FREE taught classes on Wednesday, Thursday and Saturday.**

Wednesday 10.30am – 12.00pm (please check the website for up to date information)

**Hanwell Wine Estate**

Melton Road, Hickling Pastures, LE14 3QG

Contact number: 01949 81393

**Please book online: [www.hanwellwine.co.uk](http://www.hanwellwine.co.uk)**

Every Thursday and Saturday

1.00pm - 3.00pm ongoing 5 week or individual courses

**Samarpan Ashram Yog Meditation Centre - Long Acre**

**Contact details:**

Please ring Jaya Pisavadia (Centre Manager) to book meditation class at the centre.

If you would like us to visit your group and teach meditation then please contact

Hansa Heena Thoban (Education Manager)

**Contact Number: 0194981103**

## Mobile Foot Health Practitioner

Safe and effective treatment in  
the comfort of your own home

- Routine Nails Trimming
- Thick Nails & Ingrown Toe Nails
- Fungal Skin & Nails
- Hard Skin, Callous & Corns
- Cracked Heels
- Diabetic Foot Treatment
- Verrucae.



[www.tanyacomfyfeet.co.uk](http://www.tanyacomfyfeet.co.uk)

Excellent  
cosmetic  
result

Tanya ☎ 07714876006

**DipCFHP, MPSPract**



A focused questionnaire on site allocation within the Neighbourhood Plan should have been delivered to you in a big green envelope, for completion on line or in writing by 7<sup>th</sup> August. Should you not have received a copy please let the clerk know.

Jo Cartmell

25 Harles Acres

Hickling

01664 822866

It is important. We really want to know your answers to the dilemma we face over site allocation.

A copy of the Aecom Faulks site concept can be viewed at [Hicklingnotts.org/neighbourhood-plan](http://Hicklingnotts.org/neighbourhood-plan) or a copy can be obtained from the clerk.

We need to shape our neighbourhood to provide for future housing need but prevent unwanted development. A Neighbourhood Plan is a living document and provides legal weight when considering future development.

We urgently need to complete your Neighbourhood Plan as the Planning Authority are commencing consultation on the Local Plan for 2028/2038.

Regret everything cancelled until further notice.



## Thank you from George Baker and Emmanuel House

Thank you to everybody who sponsored me to shave my head. Together we raised over **£1,000**! This letter, from Emmanuel House, explains what the money will go towards. As well as immediate support for coping with the pandemic, the money will also support improving mental health, helping people manage their money and helping them into more stable lives. The letter thanks me but it is a 'thank you' to all of you too! Thank you!

From George Baker



53-61 Goosegate,  
Hockley  
Nottingham  
NG1 1FE  
0115 9507140

[victoriaebaker@btinternet.com](mailto:victoriaebaker@btinternet.com)

Dear George

Thank you very much for your donation of £1000 raised for Emmanuel House by shaving your head! It is very much appreciated, especially during this time of uncertainty. Your donation will directly support homeless, vulnerable and isolation adults in Nottingham. Following the implementation of social distancing, our incredible team continues to liaise with our beneficiaries, offering remote advice and support and with continuing success in helping people find appropriate accommodation.

Whilst Emmanuel House Support Centre is temporarily closed for face-to-face contact, the Night Shelter continues to support and accommodate up to 40 beneficiaries in a hotel. We are also preparing for a sharp rise in demand of our support services following the pandemic as consequence of the illness will result in an increase in numbers of homeless people, mental health needs and employment uncertainty.

Your donation will contribute to our current services in their changed format, along with our preparation for the increased demand in our core services when we re-open the centre. These include food, showers, and laundry. We provide a range of support services aimed at giving practical help to prevent homelessness, and enabling people recover from homelessness. This includes support for improving mental health, money management, sustaining a tenancy and helping people into stable lives. Other services include medical help and legal advice.

Without your support and the support of the wider community Emmanuel House could not succeed in helping people out of homelessness in the same way. We welcome visits from our supporters and would be very happy to show you around and explain more about our work. If this is something you would like to arrange, we would be more than happy to arrange once normal circumstances resume at the centre.

Yours sincerely

A handwritten signature in black ink that reads "Denis Tully".

Denis Tully, C.E.O.

Registered Charity No. 1077424

A Company Limited by Guarantee No. 3798780



Emmanuel House Support Centre



Emmanuel\_House



emmanuelhousesupportcentre



## The Royal British Legion Vale of Belvoir Branch



### 75th Anniversary of WW2 VJ Day, Victory over Japan

The UK's anniversary of VJ Day falls on 2 September. To recap from an earlier edition, the war in the Far East continued for several months beyond the closure of WW2 in Europe. America did not enter into WW2, either in Europe or the Far East, until the Japanese bombed the American Fleet in Pearl Harbour, Hawaii on 7 December 1941. Britain was then an imperial power with colonies across south and south-east Asia. In December 1941, Japan attacked British territories in Hong Kong, Malaya (now Malaysia), Singapore and Burma (now Myanmar). By mid 1945 the Japanese had been defeated by the US and British Allied forces. But they refused to surrender.

When it was thought that up to 1 million soldiers could die in a land invasion, President Truman authorised the deployment of nuclear weapons for the first time with the atomic bombing of Hiroshima on 6 August and Nagasaki on 9 August 1945. At that point, Stalin, leader of the Soviet Union, joined in the war against Japan, honouring its pledge to the Allied Commanders to do so after the defeat of Nazi Germany in May 1945. This was despite having previously signed a neutrality pact with Japan in 1941 which should have benefitted both sides.

The Soviets carried out a massive invasion of Japanese territories, taking out a huge number of Japanese soldiers, destroying any hope that they could end the war with Moscow's help. The Japanese finally officially surrendered on 2 September 1945, known as VJ Day thereafter. The Surrender Instrument was signed on 12 September 1945 on board USS Missouri.

The Legion had planned an event at its National Memorial Arboretum at Alrewas, Staffs, to commemorate the 75<sup>th</sup> Anniversary of VJ Day in August. It has a section dedicated to events in the Far East. But as a result of the Covid-19

pandemic it has been forced to review its plans with the Government and other military support organisations to ensure that compliance with the rules for social distancing that could be in place at the time. We wait for further information.

### Captain Tom Moore

WWII hero and NHS fundraiser Tom Moore has raised millions to help frontline staff in recent weeks by walking laps of his garden and celebrating his 100<sup>th</sup> birthday.

Tom's army career started when he enlisted with the Yorkshire Regiment, in Otley, West Yorkshire in 1939 at the age of 19. His battalion moved to Wadebridge in Cornwall for training and coastal defences against possible German invasion. There he was selected for officer training in 1940 and eventually rose to the rank of Captain.

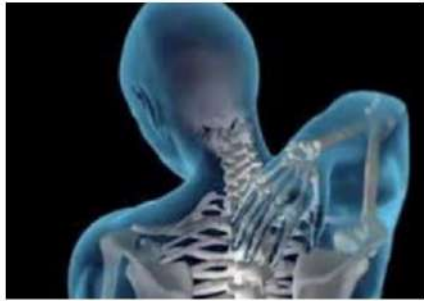
He was posted to the 9th Battalion of the Duke of Wellington's Regiment (then infantry), which converted to the 146th Royal Armoured Corps, a tank division, soon after his arrival. They were equipped with Churchill and US M3 tanks. His unit was posted to Bombay, India, in October 1941, which involved a six-week journey by sea. In 1942 they were ordered to move to Calcutta (now Kolkata) - a three-week journey which took place in monsoon conditions, before taking part in the Arakan Campaign of 1942-1943. The offensive failed to remove the Japanese and the allied forces retreated. But the Battle of Ramree Island saw the British allied forces push back to recapture the Arakan area of SW Burma from Japanese forces in January-February 1945.

Towards the end of the war, Tom and the 146th Royal Armoured Corps also went to Sumatra, Indonesia, after the Japanese surrendered. He survived Dengue fever and his war service earned him three medals: the 1939-1945 Star; the Burma Star and the War Medal 1939-1945. Truly a remarkable man.

*Michael Chapman*

## Heidi Burns Massage Therapy

For a happier, healthier, pain free you!



### Treatments:

Sports Massage  
Fascia Release Therapy  
Rossiter Stretching System  
De-stress head, neck and shoulders  
Assisted Stretching  
Yoga

Website: [heidiburnsmassagetherapy.com](http://heidiburnsmassagetherapy.com)

General Enquiries: [enquiries@heidiburnsmassagetherapy.com](mailto:enquiries@heidiburnsmassagetherapy.com)

Contact: 07757 707725

Facebook: HeidiBurnsMassageTherapy

### Locations

Main Street  
Hickling  
Melton Mowbray  
LE14 3AQ

Units 21/22  
Trent South Industrial Park  
Little Tennis Street  
Nottingham  
NG2 4EQ

## Bats in their B.. (loft)

Great message from residents on Long Lane at the beginning of July:

For two nights this weekend we have had bats emerging from our roof.

Saturday - 115

Sunday - 111

They have started to emerge about 9.35pm 'til nearly 10.30pm.

Our best previous count a few years ago was around 90.

We do see the bats flying about taking insects, flying as singletons, around the whole area but you have to be in close proximity as it is usually quite dark when they are all out. The bats can stay for a little while, gradually decreasing in numbers. If it gets very hot they can, as happened a few years ago go overnight to find somewhere else to roost. We were told that the bats we get in our roof are probably a nursery roost. The bats come out in a steady, intermittent, trickle as the gap they come through is very small and narrow. It took about an hour for us to count them out last night.

Notts Bat Group:

DO THEY MAKE A NEST? No, bats only use what is already there – caves, holes in trees, gaps in bridges, roofs of buildings, external features of buildings eg. behind fascia boards (a favourite roost site for pipistrelle bats). They do not make existing gaps bigger, they don't chew cables in roofs, and they do not bring any nesting material into the roost with them. Bats need different conditions depending on the time of year. In summer female bats gather together to form nursery roosts. To enable the young bats to develop quickly they need a warm site such as a south facing gable or a roof space. Once the young are able to fend for themselves they choose cooler sites to enable them to conserve energy by slowing down their metabolism. In winter they need cool sites with high humidity. Winter sites include caves, tunnels and old mine workings <http://www.nottsbatgroup.org.uk/>





# Squirrel Stores

*The biggest "little" shop in the Vale of Belvoir*



- ♦ Greeting cards and gifts
- ♦ Artisan jams, chutneys, honey etc
- ♦ Newspapers and magazines
- ♦ Wines, beers, local ales and ciders
- ♦ Freshly baked Hambleton bread and produce delivered daily
- ♦ Selection of butcher's meat produce and Melton Mowbray pork pies
- ♦ Local cheeses
- ♦ Large variety of fresh fruit and vegetables (personal weekly fruit delivery and veg boxes available)
- ♦ Dry cleaning service
- ♦ Fresh sandwiches, sausage rolls, samosas etc
- ♦ Hand tied bouquets

## *Opening hours:*

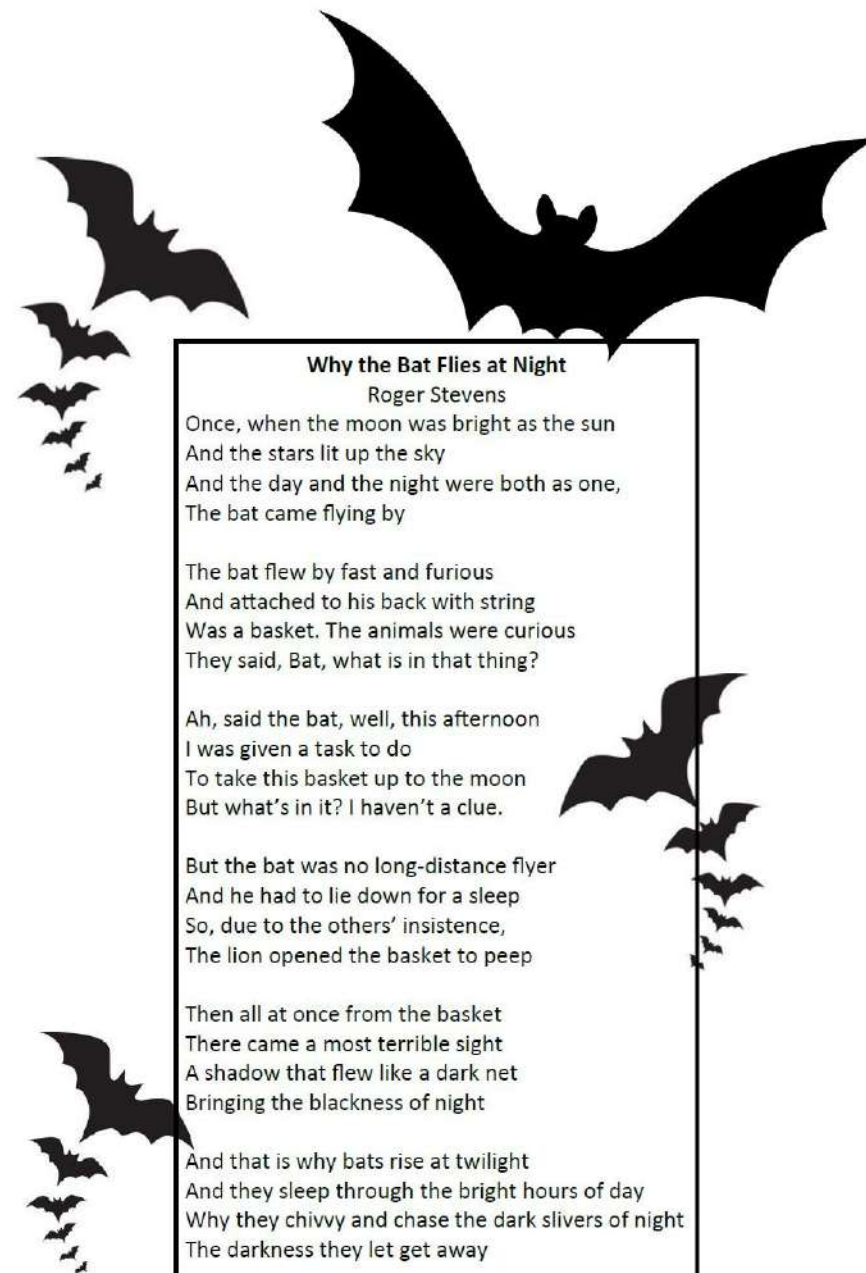
*Monday to Friday 7am to 7pm*

*Saturday 7am to 5pm*

*Sunday and Bank Holiday 8am to 1pm*

*01664 822315*

*The Sands, Long Clawson*



## **Why the Bat Flies at Night**

Roger Stevens

Once, when the moon was bright as the sun  
And the stars lit up the sky  
And the day and the night were both as one,  
The bat came flying by

The bat flew by fast and furious  
And attached to his back with string  
Was a basket. The animals were curious  
They said, Bat, what is in that thing?

Ah, said the bat, well, this afternoon  
I was given a task to do  
To take this basket up to the moon  
But what's in it? I haven't a clue.

But the bat was no long-distance flyer  
And he had to lie down for a sleep  
So, due to the others' insistence,  
The lion opened the basket to peep

Then all at once from the basket  
There came a most terrible sight  
A shadow that flew like a dark net  
Bringing the blackness of night

And that is why bats rise at twilight  
And they sleep through the bright hours of day  
Why they chivvy and chase the dark slivers of night  
The darkness they let get away

*(from: A Poem for Every Night of the Year edited by Allie Esiri)*



**Blackberry picking**  
22nd\* August 2020

# HANWELL WINE ESTATE

**Award-winning English Wine from  
three generations of local wine-makers**

- ◆ English sparkling wine
- ◆ Vineyard tours from 31st July
- ◆ Wine tasting from 31st July
- ◆ Gift vouchers
- ◆ Corporate hire
- ◆ Rural skills workshops
- ◆ Open for wine sales Saturdays from 1st August, 1-4pm.



**Our Rural Antics workshops will be back in August. Sign up  
to one of our late summer workshops and learn a new skill:**

- |                    |                               |
|--------------------|-------------------------------|
| Mosaics            | Charcoal still life           |
| Oil painting       | Watercolour painting          |
| Stained glass      | Crochet basket making         |
| Pencil drawing     | Wooden spoon carving          |
| Felt flower making | Craft knife and sheath making |

plus Yoga Morning Retreat on 23rd August.

*\*Date subject to change - please check website.*

**Hanwell Wine Estate, Hickling Pastures, LE14 3QG**  
01949 81393    [info@HanwellWine.co.uk](mailto:info@HanwellWine.co.uk)  
[www.HanwellWine.co.uk](http://www.HanwellWine.co.uk)



**Places now available for the Autumn Term from 3<sup>rd</sup> September 2020!**

Are you looking for local and experienced childcare? We have a wonderful team of qualified and enthusiastic staff based in the Hickling Village Hall.

We are open Monday to Friday 09:15 - 15:15 for children aged 2-5 years and our fees are only £4.30 per hour. No minimum hours per week required, flexible arrangements available.

We accept 15 or 30 hours of government funding, childcare vouchers, and are also registered for the government's Tax-Free Childcare program.

We have close links with Kinoulton Primary School and offer termly visits up to school to help prepare the children for the transition to 'big school'.

For children aged 3+, wrap around care is available from The Village Hideout at Kinoulton Village Hall during term time (7.15am – 6pm). They provide transportation to and from the Pre-School, so ideal for working parents!

We can offer free 'taster' sessions for all new starters, please call the pre-school on 07950558608 or email [hicklingpreschool@gmail.com](mailto:hicklingpreschool@gmail.com) for more information.

## Website

We have a new website. Currently still in the build-and-development stage, we've been working really hard to design a new site that helps demonstrate what Hickling Pre-School is all about. Visit us at [www.hicklingpreschool.co.uk](http://www.hicklingpreschool.co.uk) to have a browse.

## Facebook

Did you know we have a Facebook page? Search for Hickling Pre-School then you can follow us to keep up to date with all the children's activities. We regularly post pictures of what the children have been doing, and the phonic letter of the week.

## Events

We hope to organise some special events for all our children and families as soon as restrictions are lifted! We have missed everyone dreadfully during the pandemic.

Thank you to all our parents, family and friends for your continued support of Hickling Pre-School!

**LADY FRIDAY** Are you short of TIME?

I could support you when you're working or on holiday

**PETS**  
Regular or occasional dog walking & pet care at your home

**CHILDREN & ELDERLY RELATIVES**  
Meet children from school or take them to their recreational activities\*  
Accompany elderly relatives to appointments or shopping, or whatever

**HOME**  
Water plants, take mail in & generally check all is well

Do not hesitate to ask - I am mature and versatile!  
References available on request, inc DBS\*

Angela Sallis, 6 Melton Road, Long Clawson, LE14 4NR  
01664 822597 [angela\\_sallis@btinternet.com](mailto:angela_sallis@btinternet.com)

**1**  
**FIT**

## AEROBICS AND TONE

Low impact.  
Fun and friendly.  
All ages and abilities welcome.

Great way to get active.

Every Wednesday 9.15am.  
Free drink at the Old Wharf  
after the class.

## KETTLEBELLS

Fat burn and conditioning.  
Full body toning.

For those looking to improve fitness levels.

Every Thursday 7pm

**For information and class locations call James on 07849 329221**

Local History Group

**Hickling**  
Nottinghamshire

[www.hicklingnottslocalhistory.com](http://www.hicklingnottslocalhistory.com)

**Can You Help With Any of These?!**

### Glacial Boulder or Devil's Stone?

We are looking for information & photographs on Hickling's glacial erratics (!); we are used to the boulder by the Chapel on Bridegate Lane but there used to be one at the top of Mill lane (photo, painted white, on the right) and there are stories of one being moved into a garden in the 1960s—perhaps there are more? If you have anything at all, we would love to hear from you.

We would also love to hear the story behind the **Canal Farm** boulder (on the way to Long Clawson) - please get in touch, if you can help.



### Oral History - please get involved!

Many of us have smart phones and ipads these days and they are great recording devices. We are looking for memories of Hickling - old, new; silly, serious; facts and anecdotes. Please sit down with friends and family and start recording your conversations about life in Hickling - we can transcribe them for you.

### Scarecrows.

Sadly, Scarecrow weekend will be a very different affair this year. In readiness for September we will be pulling together photos and anecdotes from every Scarecrow weekend since we began and building up pages on the local history website as part of our 'Tomorrow's History' project.

Perhaps one of our organisers from now or from the past would like to tell us what it is like to coordinate the weekends—warts and all, please (but perhaps no names named if it's embarrassing ...)!

Please get in touch if you have anything that you would like us to include - all contributions welcome.

Please contact any member of the Local History Group or email us at: [info@hicklingnottslocalhistory.com](mailto:info@hicklingnottslocalhistory.com)



## The James T. Foord - Cholera Ship A Tragic Journey from Hickling to Australia

Two members of our group have taken on the monumental (in all senses of the word) task of recording all the gravestones in the churchyard and assembling the family stories and the links between families and generations; eventually, it will all appear on our local history website but in the meantime there is considerable checking, cross-checking, proofreading and revising. Sometimes there is a gap and sometimes that gap just has to remain - in this instance: **What happened to Joseph Starbuck after he appears on the 1841 census?**



Lockdown seems to have focused minds all over the world on their families and tracing their family histories - our enquiries have certainly increased! And so it was, in early July that we received a message from a lady in Melbourne - their second lockdown had just begun and she found herself with time to return to her family tree; specifically, the Starbuck family and, very specifically, George and Anne Starbuck who lived in Hickling in the 19th Century. The team went into over-drive and it turned out that the Melbourne connection filled one of those frustrating gaps!

In summary, George and Anne Starbuck married in 1813 and had 10 children(!); their eldest daughter died aged 9 but their remaining children all survived. They were a family of farm labourers and life would have been hard. John (b.1816) and Joseph (b.1822) went on to marry sisters; Ann and Jane Hill - John and Ann also went on to have 10 children and they remained in Hickling. But, until our enquiry from Melbourne, all we knew was that Joseph was living with his parents in 1841 and then—just a gap. As soon as we learnt that he had travelled to Australia details of his marriage, his children and their voyage to Australia combined into one story and the gap was filled.

England in the 19th Century suffered from appalling outbreaks of cholera; the consequences of the outbreaks in 1832 and in 1848/9 were particularly bad and Hickling experienced deaths in both. In summer 1849 Joseph and Jane Starbuck decided to uproot their family and emigrate to Australia (taking advantage, it is thought, of the Government sponsored schemes of the time). Parish registers show that they had four children:

Mary 24 April b.1842, father labourer

Selina 4 August b.1844, father labourer, later note in registers "Australia"

Thomas 10 May b.1847, father labourer, later note in registers "Australia"

Emma 3 June b.1849, father labourer, later note in registers "Australia"

When they began the journey to join the ship in Gravesend, baby Emma was just a few weeks old. What the family had no way of knowing, was that they were travelling into a terrible cholera tragedy which would mean that only Joseph and their eldest daughter, Mary (age 7), would make it to Australia.

When the family joined the ship in Gravesend baby Emma and 4-year-old Selina were unwell and by the time they had reached Plymouth to pick up the remaining passengers accounts of the voyage record that they both seem to have died (although only Emma's death is registered in Plymouth). Panicking that illness would delay his departure (costing him money), the captain decided not to quarantine passengers and the voyage went ahead. Soon, after departure Jane (mother) and 2-year-old Thomas had also died. 54 emigrants died on the voyage (including 34 cholera deaths and 23 child deaths) - all were buried at sea. 7 children were born.

Conditions on this voyage were more than usually appalling: on arrival in Port Phillip on 7th November 1849, the James T. Foord was quarantined, passengers interviewed and an enquiry carried out. It was found that the aggressive and fraudulent behaviour of the crew meant that passengers were eating rotten food, deprived of rations and water and deprived of basic health supplies such as soap.

(<https://chapmanweb.weebly.com/>)

This is not the end of the story, though. Also on the ship was Thomas Peach's family and they also suffered the deaths of his wife, his eldest son and his newborn baby. In February 1851, the widowed Joseph Starbuck married Thomas's daughter Ruth Peach (aged 17) in Melbourne, Australia and they settled to a farming life and began a family of their own. Life continued to be hard, though, and in 1860 Joseph was declared insolvent when his crops failed, he died in 1887.

Mary (Joseph and Jane's only surviving child from Hickling) married Joseph Dredge in April 1866 and it is her direct descendent who has been in contact with us having traced Mary's birth records and found the village website. Sadly, Mary died aged just 46 in January 1888.

Hickling Parish records tell us that the family, here, knew that they had gone to Australia but how did John and Anne (brother & sister to the emigrating couple) feel about this departure? Did news of the James T Foord ever get back to Hickling; no further notes were added to the Parish records and the passenger records tell us that, whilst Joseph and Ruth could both read, they couldn't write. What was life like for Joseph and his new young wife, Ruth in a new country and after that journey? How did 7-year old Mary fare in a new country without her mother and siblings and in a new family?

We do have lots more on this story: the family histories in both Hickling and in Australia, the passenger list for the James T. Foord and reports of the enquiry into the tragedy after the ship's arrival in Melbourne. **This isn't on our website yet, but it is on my 'to do' list - there will be a message on the Homepage and our FB page when it appears. Please contact us if you would like to know more.**

[info@hicklingnottslocalhistory.com](mailto:info@hicklingnottslocalhistory.com)

| LIST OF Emigrants per Ship "James T. Foord" |                     |     |     |               |               |                        |                |                |         |
|---|---------------------|-----|-----|---------------|---------------|------------------------|----------------|----------------|---------|
| ARRIVED ON THE 7th November 1849            |                     |     |     |               |               |                        |                |                |         |
| NO.   | NAME                | SEX | AGE | DATE OF BIRTH | DATE OF DEATH | PLACE OF BIRTH         | PLACE OF DEATH | CAUSE OF DEATH | REMARKS |
| 1   | Starbuck, Joseph    | M   | 27  | 1822          | 1849          | Hickling, Lincolnshire | At sea         | Cholera        |         |
| 2   | Starbuck, Jane      | F   | 34  | 1815          | 1849          | Hickling, Lincolnshire | At sea         | Cholera        |         |
| 3   | Starbuck, Mary      | F   | 7   | 1842          | 1849          | Hickling, Lincolnshire | At sea         | Cholera        |         |
| 4   | Starbuck, Emma      | F   | 3   | 1849          | 1849          | Hickling, Lincolnshire | At sea         | Cholera        |         |
| 5   | Starbuck, Selina    | F   | 4   | 1844          | 1849          | Hickling, Lincolnshire | At sea         | Cholera        |         |
| 6   | Starbuck, Thomas    | M   | 2   | 1847          | 1849          | Hickling, Lincolnshire | At sea         | Cholera        |         |
| 7   | Starbuck, Ruth      | F   | 17  | 1832          | 1851          | Melbourne, Australia   | At sea         | Cholera        |         |
| 8   | Starbuck, John      | M   | 24  | 1816          | 1849          | Hickling, Lincolnshire | At sea         | Cholera        |         |
| 9   | Starbuck, Anne      | F   | 24  | 1813          | 1849          | Hickling, Lincolnshire | At sea         | Cholera        |         |
| 10  | Starbuck, George    | M   | 29  | 1820          | 1849          | Hickling, Lincolnshire | At sea         | Cholera        |         |
| 11  | Starbuck, Elizabeth | F   | 21  | 1828          | 1849          | Hickling, Lincolnshire | At sea         | Cholera        |         |
| 12  | Starbuck, William   | M   | 19  | 1830          | 1849          | Hickling, Lincolnshire | At sea         | Cholera        |         |
| 13  | Starbuck, Richard   | M   | 17  | 1832          | 1849          | Hickling, Lincolnshire | At sea         | Cholera        |         |
| 14  | Starbuck, Henry     | M   | 15  | 1834          | 1849          | Hickling, Lincolnshire | At sea         | Cholera        |         |
| 15  | Starbuck, Sarah     | F   | 13  | 1836          | 1849          | Hickling, Lincolnshire | At sea         | Cholera        |         |
| 16  | Starbuck, James     | M   | 11  | 1838          | 1849          | Hickling, Lincolnshire | At sea         | Cholera        |         |
| 17  | Starbuck, Anne      | F   | 9   | 1840          | 1849          | Hickling, Lincolnshire | At sea         | Cholera        |         |
| 18  | Starbuck, Thomas    | M   | 7   | 1842          | 1849          | Hickling, Lincolnshire | At sea         | Cholera        |         |
| 19  | Starbuck, Mary      | F   | 5   | 1844          | 1849          | Hickling, Lincolnshire | At sea         | Cholera        |         |
| 20  | Starbuck, Emma      | F   | 3   | 1846          | 1849          | Hickling, Lincolnshire | At sea         | Cholera        |         |
| 21  | Starbuck, Selina    | F   | 1   | 1848          | 1849          | Hickling, Lincolnshire | At sea         | Cholera        |         |
| 22  | Starbuck, Thomas    | M   | 0   | 1849          | 1849          | Hickling, Lincolnshire | At sea         | Cholera        |         |
| 23  | Starbuck, Ruth      | F   | 17  | 1832          | 1851          | Melbourne, Australia   | At sea         | Cholera        |         |
| 24  | Starbuck, John      | M   | 24  | 1816          | 1849          | Hickling, Lincolnshire | At sea         | Cholera        |         |
| 25  | Starbuck, Anne      | F   | 24  | 1813          | 1849          | Hickling, Lincolnshire | At sea         | Cholera        |         |
| 26  | Starbuck, George    | M   | 29  | 1820          | 1849          | Hickling, Lincolnshire | At sea         | Cholera        |         |
| 27  | Starbuck, Elizabeth | F   | 21  | 1828          | 1849          | Hickling, Lincolnshire | At sea         | Cholera        |         |
| 28  | Starbuck, William   | M   | 19  | 1830          | 1849          | Hickling, Lincolnshire | At sea         | Cholera        |         |
| 29  | Starbuck, Richard   | M   | 17  | 1832          | 1849          | Hickling, Lincolnshire | At sea         | Cholera        |         |
| 30  | Starbuck, Henry     | M   | 15  | 1834          | 1849          | Hickling, Lincolnshire | At sea         | Cholera        |         |
| 31  | Starbuck, Sarah     | F   | 13  | 1836          | 1849          | Hickling, Lincolnshire | At sea         | Cholera        |         |
| 32  | Starbuck, James     | M   | 11  | 1838          | 1849          | Hickling, Lincolnshire | At sea         | Cholera        |         |
| 33  | Starbuck, Anne      | F   | 9   | 1840          | 1849          | Hickling, Lincolnshire | At sea         | Cholera        |         |
| 34  | Starbuck, Thomas    | M   | 7   | 1842          | 1849          | Hickling, Lincolnshire | At sea         | Cholera        |         |
| 35  | Starbuck, Mary      | F   | 5   | 1844          | 1849          | Hickling, Lincolnshire | At sea         | Cholera        |         |
| 36  | Starbuck, Emma      | F   | 3   | 1846          | 1849          | Hickling, Lincolnshire | At sea         | Cholera        |         |
| 37  | Starbuck, Selina    | F   | 1   | 1848          | 1849          | Hickling, Lincolnshire | At sea         | Cholera        |         |
| 38  | Starbuck, Thomas    | M   | 0   | 1849          | 1849          | Hickling, Lincolnshire | At sea         | Cholera        |         |
| 39  | Starbuck, Ruth      | F   | 17  | 1832          | 1851          | Melbourne, Australia   | At sea         | Cholera        |         |
| 40  | Starbuck, John      | M   | 24  | 1816          | 1849          | Hickling, Lincolnshire | At sea         | Cholera        |         |
| 41  | Starbuck, Anne      | F   | 24  | 1813          | 1849          | Hickling, Lincolnshire | At sea         | Cholera        |         |
| 42  | Starbuck, George    | M   | 29  | 1820          | 1849          | Hickling, Lincolnshire | At sea         | Cholera        |         |
| 43  | Starbuck, Elizabeth | F   | 21  | 1828          | 1849          | Hickling, Lincolnshire | At sea         | Cholera        |         |
| 44  | Starbuck, William   | M   | 19  | 1830          | 1849          | Hickling, Lincolnshire | At sea         | Cholera        |         |
| 45  | Starbuck, Richard   | M   | 17  | 1832          | 1849          | Hickling, Lincolnshire | At sea         | Cholera        |         |
| 46  | Starbuck, Henry     | M   | 15  | 1834          | 1849          | Hickling, Lincolnshire | At sea         | Cholera        |         |
| 47  | Starbuck, Sarah     | F   | 13  | 1836          | 1849          | Hickling, Lincolnshire | At sea         | Cholera        |         |
| 48  | Starbuck, James     | M   | 11  | 1838          | 1849          | Hickling, Lincolnshire | At sea         | Cholera        |         |
| 49  | Starbuck, Anne      | F   | 9   | 1840          | 1849          | Hickling, Lincolnshire | At sea         | Cholera        |         |
| 50  | Starbuck, Thomas    | M   | 7   | 1842          | 1849          | Hickling, Lincolnshire | At sea         | Cholera        |         |
| 51  | Starbuck, Mary      | F   | 5   | 1844          | 1849          | Hickling, Lincolnshire | At sea         | Cholera        |         |
| 52  | Starbuck, Emma      | F   | 3   | 1846          | 1849          | Hickling, Lincolnshire | At sea         | Cholera        |         |
| 53  | Starbuck, Selina    | F   | 1   | 1848          | 1849          | Hickling, Lincolnshire | At sea         | Cholera        |         |
| 54  | Starbuck, Thomas    | M   | 0   | 1849          | 1849          | Hickling, Lincolnshire | At sea         | Cholera        |         |



## Correspondence with our “Sister City”, Farmington, Michigan

*From Farmington 7 July 2020*

Hello Carol

I'm so glad to hear that everyone in Hickling was very diligent during the lockdown and that you are coming out healthy! If all has continued well during these past 2 months, you must be even more active by now. Things in our area of Michigan were very serious for many, many weeks and people were quite scared. We were one of the epicenters in the United States-not something to be happy about -but things have finally improved somewhat. Almost all events and gatherings have been cancelled through the summer and even into fall. The Warner Mansion is still closed and will remain so until probably at least 2021. Our bustling downtown has been quiet and still, until just recently when some of our restrictions were lifted, but the streets remain quite empty. Because the virus was so intense in the Detroit area, most people still stay home and very willingly wear masks when going out in public. I must tell you that your parcel has not yet arrived. Our postal service has been very irregular for the past few months due to covid and the many mail carriers who were ill. Sometimes a letter we would send to a nearby town would take over a month to arrive! Delivery is improving, however, and I keep watching for the package. We shall be sending one to you soon as our local post office has finally reopened. Please forgive the tardiness of this email. My computer broke during the lockdown and all I have for communicating is my phone-and it's not as easy to type with. It has also just been difficult to put down in words all that has happened. But I shall write again with more details soon! Sending our dear friends in Hickling all of our very best wishes from your Farmington friends across the pond Martha Taylor

10 July 2020

Hello from your sister village, Hickling.

The pretty purple and pink image of the Covid 19 Corona Virus is now recognised by us all and I wonder why they have made something which is so harmful look so attractive. The virus has affected everyone in Great Britain and we in Hickling, like other communities across our country are living very different lives to what we have been used to.

All playgroups, nurseries, schools and colleges have been closed since mid-March. Children in Hickling are being home schooled with guidance from the ed-

ucationalists. Our Government is hoping to have children return to education in September albeit with restrictions and distancing measures in place. One wonders what the long term effects will be for these children who have not been able to socially interact with their friends; who have not been able to visit recreational parks and playgrounds; who have not been able to visit zoos, theme parks and museums; who have not been able to participate in sporting activities and who have perhaps been spending far too long in front of a computer screen.

Many in Hickling have been working from home and perhaps many may continue with this new way of working. For some people, who were unable to work from home, the Government has set up a scheme which pays 80% of their wages. However many key workers including doctors, nurses, police and fire service workers, food retail staff, refuse collectors, delivery people etc have continued to work throughout this crisis. As Hickling is a rural village, we have seen our farmers continuing to work, the milk has still to be delivered to the cheesemaking factory, the hens still supply the eggs for the egg farm and in nearby Melton Mowbray, the Pork Pies have continued to be made. Just like when Fred was born here in Hickling, the locally produced milk is used for making our World famous Stilton Cheese. Please look for it next time you visit your local supermarket on the speciality cheese counter.

Hickling has become a quiet village in recent months, with the local pub - The Plough closed; the cafe at the Canal Wharf closed; the Church doors locked; and the Village Hall, where so many community events take place, also closed.

People, however, have been able to walk along the numerous footpaths or along the Canal towpath with the opportunity to enjoy the wildlife, the fauna and the scenery of our beautiful area.

Slowly places are being allowed to re-open. The Plough Pub and the Wharf Cafe who are now following new safety guidelines opened this week. It will be a while before we can hold meetings and events in our Village Hall. The annual Scarecrow Weekend Event which is held each year in September has been cancelled and no doubt other forthcoming village events such as the Jumble Sale and Christmas Fayre will not take place.

Hickling's older generation have been quick to embrace modern technology. Many now do their weekly food shopping online with items being delivered to their door. The Hickling Standard magazine appears now on screen and so I will not be sending you the paper copies I usually do. We are fortunate enough to live



## STEVEN M. DAW

### PLUMBING, HEATING and GAS SERVICES

Plumbing work – repairs; Central heating and boiler installations; Boiler servicing; Central heating power flushing; Bathroom design and installation

Over 30 years experience

Based in the Vale of Belvoir

Tel: 01664 822648 - Mobile: 07860 285031

Email: [stevendaw@btinternet.com](mailto:stevendaw@btinternet.com)

[www.stevendaw.com](http://www.stevendaw.com)



in a community with neighbourhood schemes which keep everyone up to date with what is happening and in contact with each other.

I wonder if life will ever be the same for any of us again wherever we live in the world. Perhaps this experience has taught us to appreciate what we have, our health, our family and friends and the countryside around us.

If anyone in Farmington is interested in learning more about the History of Hickling and its people we have an excellent website. Information is being added all the time and Fred Warner has a whole section. Please look at this website [hicklingnottslocalhistory.com](http://hicklingnottslocalhistory.com).

Take care and keep safe.

Carol, Hickling History Group, Hickling Village

## DAVID HEWITT

### AERIAL SERVICES

TV/DAB/FM/DIGITAL  
AERIALS FITTED &  
REPAIRED

digital

FreeView

TV/DVD/VCR TUNERS  
LOCAL SERVICE EST 32 YEARS



FREE QUOTES  
ALL AREAS COVERED

SPECIAL RATES FOR PENSIONERS & DISABLED

**Call 01664 820430**

Corner Cottage, Clawson Lane, Hickling LE14 3AB



### Yve

#### Complete Foot Health Care

Mobile foot health practitioner,  
MCFHP, MAFHP.

Fully qualified and insured.

Foot and nail problems  
assessed and treated to include:  
thick damages nails, ingrowing  
toe nails, callous/hard skin, re-  
moval of corns, verrucas.

For appointments/enquiries/full  
price list 'phone 07875 733039

### The Importance of Enrichment for your Dog

Dogs, like people, need things to do to keep them occupied. They crave exercise and mental challenges. If you don't give them something 'fun' to do, they will find something to do on their own and it will usually be something you don't approve of. Give your dog 'legal' outlets for their favourite activities which, depending on their breed instincts, could be chasing things, digging, chewing or scavenging for food.

Feed meals from work to eat toys such as a Kong instead of using a bowl or toss kibble in the grass for them to search and find. Fetch is a great game for dogs who love to chase things. A digging pit will give dogs the chance to engage in this fun activity and will save your best plants from being ruined.

In addition to walks where they have plenty of time to sniff, take them to different places so they don't get bored with same old route. A well exercised dog who regularly engages in a favourite dog specific activity will be calmer, quieter, happier, healthier and better behaved!

Lynne Marshall

[www.loveyourdog.org.uk](http://www.loveyourdog.org.uk)

0778 6638171

instagram loveyourdog\_



## Women's Land Army—WWII

What do you think of this beautiful object?

Just over an inch long, it is a brooch in the shape of a spitfire made from silver sixpences and given by a pilot to his sweetheart before leaving to serve in the RAF in India - he returned to marry her in April 1946 and whilst he was away she worked as a land girl in our village.

She was Marjorie Jane Wright and we have recently been contacted by her son, Paul Miller: she was based in the YWCA Hostel in Kinoulton and worked on farms in Kinoulton and Hickling Pastures -

particularly for Mr & Mrs Salt ("who she loved").



Can you help us? Did you know Marjorie Wright? Do you know anything about the land girls stationed in Hickling?

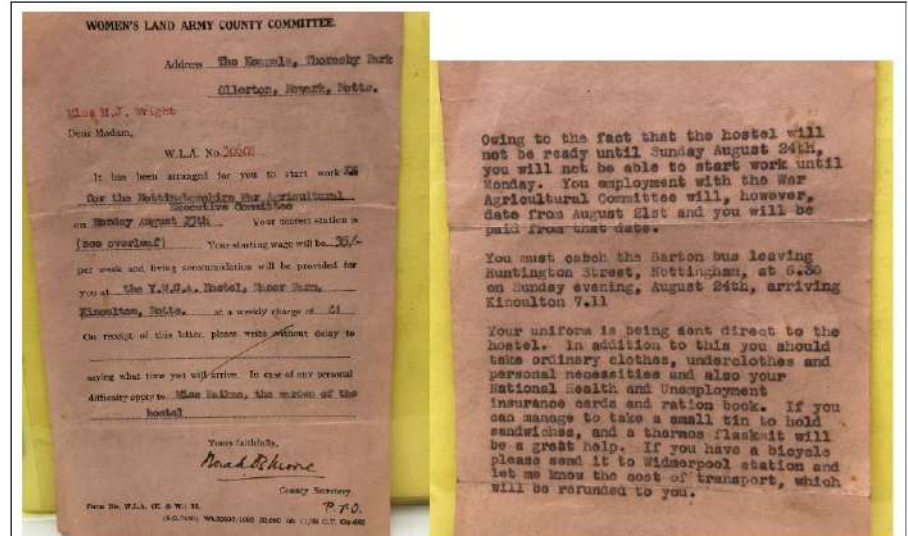
We have very little about the Women's Land Army in our area but there is some fascinating history (including links to the WI), some eye-brow-raising cartoons and posters and more about Marjorie Wright plus Nancy Bond and Barland Fields on this link:

<https://www.hicklingnottslocalhistory.com/womens-land-army/>

### National Archive Office:

"The Women's Land Army was established in January 1917 to help increase the amount of food grown within Britain. It was wound up in 1919, and then re-established shortly before the outbreak of the Second World War, in June 1939. It was finally disbanded in 1950.

"At its peak in 1943 over 80,000 women worked as 'land girls'. They came from a wide range of backgrounds including towns and cities as well as the countryside."



THE FARMER'S IDEA OF THE LANDGIRL



THE LANDGIRL'S IDEA OF THE FARMER

### Barland Fields:





## We're All Going on a Bear Hunt with Sticky McStickstick.

Four months after we went into lockdown, things are beginning to change again and now we are worrying (hopefully, temporarily) about how coming out of lockdown will work.

As a village, we seem to have been lucky enough to have come through relatively unscathed – although it has been difficult (and very difficult for those in our community who live on their own or struggle with health problems or anxiety). In the early weeks a cheerful suggestion was that we all should 'Go on a Bear Hunt' and many of our houses still have a teddy bear the window as a reminder of our love for each other. Little did we know that Michael Rosen, the Bear Hunt author, was in hospital and things weren't looking good. He is an extraordinary man with an incredible outlook on life – his simple but sensitive account of how Coronavirus affected him is a 'must-read' for those of us who have been fortunate to remain on the edge of this crisis.

Michael Rosen is an exceptional children's author and poet whose 18-year old son died without warning one night of meningitis; he has the ability to write and speak about the most heart-breaking things and to make us laugh and to make us think – his fondness for Sticky McStickstick combined with his first concern on waking up after weeks of unconsciousness which wasn't his own loss or his escape but concern for his family and how awful the waiting must have been.



in

Author Michael Rosen has said doctors warned him he "might not wake up" shortly before putting him into an induced coma during Covid-19 treatment.

BBC Report 29<sup>th</sup> June 2020:

The We're Going On A Bear Hunt writer, 74, spent 47 days on a ventilator after being admitted to

hospital in March. He said doctors "handed me a piece of paper and said you've got a 50/50 chance", to which he asked "are you telling me I might not wake up?". The ex-Children's Laureate said he was told "Yes", then I signed something." He recalled: "I think I was a bit light-headed but I remember thinking 'oh well a 50/50 chance'. I was



quite sort of flippant to myself about it really."

Speaking on BBC Radio 4's Today programme, he said at first he thought he had the flu or a mild form of the disease. He told presenter Mishal Husain that "things started moving very, very quickly" after his neighbour, a GP, tested the levels of oxygen in his blood and told him "you've got to go to A&E now". He later found out his respiratory system, liver and kidneys were failing, and looking back said he was "probably two or three hours off departing this planet." "I was so near to going," he said. "It's a reminder of how life is very impermanent."

Recalling the moment his wife told him how long he had been unconscious for, Rosen said "I got quite upset about it... That's full of emotion for me, that people were just hanging in there." His wife, radio producer Emma-Louise Williams, is now helping the author recover. She used Twitter to update fans about her husband's illness, describing his time on a ventilator as a "long and difficult" seven weeks.

Recalling the night she was first told her husband may have to be put on a ventilator, she said: "My daughter and I came home and we didn't really sleep. We did think that Michael might go that night". She said Rosen would spend another eight days breathing with the aid of

a Continuous Positive Airway Pressure (CPAP) mask but was later readmitted to intensive care. Rosen has been left with a temporary hole in his neck after doctors performed a tracheostomy to allow the ventilator to supply oxygen to his body via a tube. He described himself as "feeble" and "lopsided" after losing some vision and hearing on his left side. He likened his legs to "cardboard tubes full of porridge" and currently uses a hospital-issued walking aid which he has named "Sticky McStickstick". In a specially recorded message for his young fans, he thanked them for their messages, and told them: "It does look a little bit as if this illness can be beaten with kindness and care from the NHS."



## TRICKS

Nearly every morning  
my brother would lie in bed,  
lift his hands up in the air  
full stretch  
then close his hands around an invisible bar.  
'Ah, my magic bar,' he'd say.  
Then he'd heave on the bar,  
pull himself up,  
until he was sitting up in bed.

Then he'd get up.

I said,

'You haven't got a magic bar above your bed.'

'I have,' he said.

'You haven't,' I said.

'Don't believe me then,' he said.

'I won't – don't worry,' I said.

'It doesn't make any difference to me  
if you do or you don't,' he said,  
and went out of the room.

'Magic bar!' I said.

'Mad. He hasn't got a magic bar.'

I made sure he'd gone downstairs,  
then I walked over to his bed  
and waved my hand about in the air  
above his pillow.

'I knew it,' I said to myself.

'Didn't fool me for a moment.'



## **VILLAGE TABLE TENNIS SET TO CANVAS MEMBERS!**

*Having established an ambitious plan, which could see this popular activity restart from early October, members are to be approached as to their views on a new, proactive scheme, drawn up within Covid-19 guidelines.*

*Clearly, with a mandate of "Simply Social Table Tennis", there are aspects which need to be thoroughly accessed to ensure the spirit of this weekly event remains intact. Confident a safe environment can be achieved, organisers are in the process of canvassing interested parties, in order to judge the opinions of a cross section of villagers who might benefit from the activity.*

*With both junior and senior sections, the group are keen to see the return to something approaching normal, especially with the onset of the long winter nights! Whilst at this point in time, nothing is set in stone, suggestions and observations would be welcomed from the community through contacting Alison Rowe on 01664 822761 or Eric Wood 01664 822257.*

*email: [wudhut@gmail.com](mailto:wudhut@gmail.com)*

## **Outdoor table tennis table**

**Free of Charge:** *courtesy of The Old Wharf Tea Room's enlightened owners who, jointly, with Village Table Tennis initiated the installation of this superb table. Intended as an easily accessible all inclusive community facility, even when the tea rooms are closed, access can be obtained via the pedestrian entrance on the south bank of the basin.*

Due to Covid-19 implications, either bring your own bats and balls or, if you wish to borrow (F.O.C.) washed and sanitised equipment, call Eric Wood, on 01664 822257



Tree Felling  
Lopping,  
Pruning,  
Ground  
Clearance,  
Tree Surgery,  
Fencing,  
Planting,  
Logs,  
Wood  
Chipping,  
Hedges  
Maintained.

Fully Insured

Tel. 01664-822471



**Keith Wadkin & Son**  
Tree Specialist  
Hickling  
Melton Mowbray, Leics.  
LE14 3AQ

Established 1959

### A Message from St. Luke's Church

Firstly, we would like to thank all our regular givers, without you we would not have been able to keep paying our bills and maintain the building. We have to pay the insurance of course even if the building is closed, which is £3000 a year, and utility costs. We have just been using electricity for the clock motor and the flood light. With no income from services or fundraising, your contributions have been invaluable.

We did some maintenance work ourselves, including 2 coats of oil based wood stain on the porch doors. We have also replaced the old sodium floodlight with an LED to save energy and reduce costs. The black poplar was pollarded on the last day before lockdown, which should extend its life considerably.

Thank you to all the people who worked hard to maintain the village fabric, at the canal and the village hall particularly. We are all very blessed to live here in such a caring and proactive community.

From the Parochial Church Council.

### *R & E L Birley Motor Engineers*

East End, Long Clawson. Telephone 01664 822450



**Approved MOT testing station.**



**Servicing and repairs on car & commercial vehicles.**



**Tyres, balancing, punctures & wheel alignment.**

**Accident and breakdown recovery service.**



**Forecourt sales for Petrol, Diesel & Oils etc.**

**Established in Long Clawson for over 40 years.**

E-mail: [birleys@long-clawson.com](mailto:birleys@long-clawson.com) Web page: <http://birleys.long-clawson.com/>

### Scarecrow festival 2020 cancelled.

The committee left the decision as long as we possibly could in the hope that the current situation with covid 19 might have eased by September and we could go ahead as planned. However, although things have eased somewhat, we felt with social distancing still in place and many people still feeling vulnerable, it would be safer all round, for us to cancel this year. We understand it is disappointing but staying safe is first and foremost.

Instead, we thought why not mark the weekend of 12-13th September by putting old scarecrows from previous years in your front gardens and having a safe social distance party with your friends and neighbours!

Next year when we are safe again, we will be back, bigger than ever!

Thank you for your understanding.

Karen Buckley  
Chairman  
Hickling Scarecrow Committee



# Vale Electrics

## Electrical Contractors

Specialists in all types of Industrial,  
Commercial and Domestic Installation

Unit 9 Old Dalby Trading Estate, Station Road, Old Dalby  
Leicestershire LE14 3NJ

Telephone (01664) 822 217

National Inspection Council for  
Electrical Installation Contracting  
**NIC EIC**  
APPROVED CONTRACTOR



## A.R. PEET LIMITED

**Specialist Retailer of Wood, Gas, Electric and Multifuel  
Stoves**

**Tel: 01664 822397**

**[www.arpeetstoves.co.uk](http://www.arpeetstoves.co.uk) [info@arpeetstoves.co.uk](mailto:info@arpeetstoves.co.uk)**

**HOME FARM, MAIN STREET, HICKLING**

### Mobile Foot Health Professional

Fully qualified and insured. Foot and nail problems fully assessed and treated, treatments include - Thick damaged nails, ingrowing toe nails, removal of corns, calluses and verruca care. All treatments carried out in the comfort of your own home.



**Discounts for group bookings**

Please call Nicola MCFHP on 07391 316998, if unavailable please leave a message

## The St Luke's Benefice of Kinoulton, Hickling and Upper Broughton.

It was with great regret that the Churchwardens, PCC and Clergy agreed that two of our church buildings had to remain closed until the end of July, both for private prayer and for Sunday services.

In line with government guidelines in order to open the church buildings we had to carry out a full Risk Assessment, clean the churches thoroughly and then ensure there were enough people willing, fit and able to "man the doors" to ensure social distancing and then clean the buildings, toilets etc. afterwards.

Regrettably the PCCs at Kinoulton and Hickling felt that at that time we were services are planned information will be available on our three church websites, the village unable to carry out these requirements safely. Upper Broughton Church was able to open for private prayer by appointment.

Added to this most of our Churchwardens, Sheila Hill our Lay Reader and Rev Maggie were all shielding on government and doctor's advice until the end of July. This made the holding of services extremely difficult.

It is very much hoped that all our churches will be open for both private prayer and Sunday services by August.

At the time of writing no decisions have been made as to when our church buildings will be open for private prayer (other than Upper Broughton) and "socially distanced" services. Once websites and the church notice boards. Our church websites may be found via the "A Church Near You" website, just type in your post code.

I look forward to welcoming you all back into church as soon as we are able. If you would like to talk to me my details are as follows:  
[maggie.woodward511@btinternet.com](mailto:maggie.woodward511@btinternet.com) or telephone 01949 81183

*We thank you for your continued understanding  
in these very difficult times.*

*Rev Maggie .*



# Faulks Plant Hire

Reliable • Available • Quality

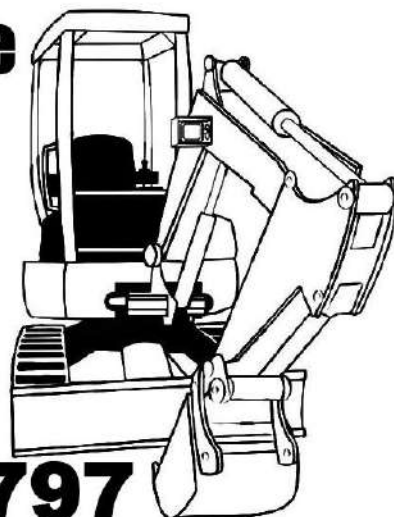
Suppliers of ...

- Mini Diggers
- Site Dumpers
- Compaction Equipment

To discover more visit ...

[www.aefaulks.co.uk](http://www.aefaulks.co.uk)

**01664 822797**



The Wharf, Main Street, Hickling, Melton Mowbray, Leicestershire LE14 3AH



**YOUR LOCAL INDEPENDENT  
DRY CLEANING SERVICE**

- Repairs and Alterations
- Day and Evening Wear
- Silks and Wedding Dresses
- Duvet, Eiderdowns and Sleeping Bags
- Laundered Shirts Service
- Free Removal, Collection and Re-Hanging of Curtains

13 Main Street, Keyworth, Nottingham NG12 5AA. Tel: (0115) 937 6599

The yearly life of the Church follows a seasonal cycle. Sometimes this mirrors the agricultural seasons with Rogation-tide as a time to ask for a blessing upon the land and newly sprouting crops, and later Harvest as a thanksgiving for what we eventually receive. More often we have the festivals of the Church itself, such as the major celebrations of Christmas and Easter and the seasons surrounding and leading up to these. So, in writing a reflection to be read some time after its actual composition, the clergy person can usually look a little way forward in the year to anticipate the nature of the season and address it.

However, in early July 2020, writing for an August / September edition of this publication, I'm very conscious that we experience life at the present in a constant state of flux, determined not by an established seasonal pattern but by the ever changing ways in which we as a nation seek to mitigate the virulence of the coronavirus. When lived reality changes from week to week it is very difficult to discern what life might be for us by the time late summer comes. This reminds me somewhat of the scene from David Lean's film 'Laurence of Arabia' in which Omar Sharif makes his entrance, emerging mirage like from the desert. You know that something is coming from far off, but as it is obscured by the haze of the intense heat you can't know who or what it is for certain until it is nearly right in front of your face.

An uncertain present, and a limited ability to accurately 'scry' the future, are not a novelty in the life of our nation. In living memory our fellow countrymen and women have experienced two World Wars and events in comparative 'peace time' like the Cuban missile crisis. At these times we place our trust in what we know, what we can count on, what provides us with a sure foundation.

Often it is to those known to us that we turn, family, neighbours and friends whose constancy on our behalf is proven and sure. As they were there for us in the past, so we have faith in their support in the present. We have faith and we trust.

For Christians this faith and trust in others is both overarched by, and intertwined, with our faith in God. Bible passages attest to and affirm His care, concern and constancy for all His children as a loving Heavenly Father.

Faith manifest at the deepest point of uncertainty came during the Second World War, and finds expression in King George VI address to the nation at Christmas 1939. In this he quotes the first lines of the poem 'The Gate of the Year' by Minnie Louise Haskins. You may have heard me use this before. I'm not apologetic for the repetition as I've found it to be a source of hope, comfort and inspiration when the way ahead is indistinct, and as such I commend it to you.

And I said to the man who stood at the gate of the year:  
"Give me a light that I may tread safely into the unknown."  
And he replied:

"Go out into the darkness and put your hand into the Hand of God. That shall be to you better than light and safer than a known way." So I went forth, and finding the Hand of God, trod gladly into the night. And He led me towards the breaking of the day."

Paul (Rev'd)



## SUMMER NEWS LETTER



Rushcliffe Borough Councillor - Tina Combellack's  
**News for the Nevile & Langer Ward**  
**Colston Basset, Langer, Kinoulton, Hickling, Upper Broughton,**  
**Owthorpe and Hickling Pastures**

### THANK YOU

What an amazing response there has been throughout this Ward and across the Borough to the Covid crisis. The community was mobilised in an instant. We have to thank everyone who has been involved, shopping, delivering, communicating, sewing, painting, baking, cooking and much more – doing all the things for people that make us human.

Rushcliffe would like to thank each and every one of you if possible. So I need a list of everyone involved. I appreciate this might not include all, as some people will wish to remain anonymous but a big thank you anyway.

### IT AND THE DIGITAL WORLD

It's been remarkable how quickly we have adapted to using digital technology. We have all resisted the change from paper to web filing - money to plastic - face-to-face meetings to Zoom, Teams, and Skype. So what seemed a slow transition to a new world has happened in a flash.

### NATURE & THE ENVIRONMENT

Hasn't it been quiet – you could hear the birds; the world seemed alive even though we were in lock down. The air was clearer and colours brighter - all things we should treasure. Rushcliffe are already been looking at the outcomes from the Covid crisis – what lessons we have learnt, what we could have done better, how we would cope if it happened again.

### RUSHCLIFFE getting CARBON CLEVER reducing its footprint by 2030

In March the Council's Cabinet approved plans to become 'Carbon Clever' and reach the 2030 deadline with an added £1m towards the reserve in conjunction with innovations from an internal working group that is now implementing changes.

Rushcliffe Borough Council is taking further steps towards its goal for its operations to be carbon neutral by 2030 with the creation of a Team Manager

for Environment in its Community Development team. Despite the pressures of COVID-19 on the authority, it is continuing with its green priorities to recruit to the role and demonstrate its commitment towards recovering from the pandemic in line with its further investment in its Climate Change Action Reserve. The Carbon Management Action Plan is to tackle Property Assets, Fleet, Policy and Regulation in the organisation to reduce emissions over the next decade.

**PLASTIC WASTE** – unfortunately we seem to have forgotten all about not using single use plastics. The current crisis has meant a lot more plastic waste the following tips from Veolia might just reawaken the 'anti plastic fairy'

### How can you cut down your waste this summer?

#### Reduce

Many shops offer fruit and vegetables without any packaging, so if you can, choose the no packaging options, or take along your own containers to be filled.

Instead of wrapping everything in tin foil or cling film before it goes in your picnic hamper, why not reuse a container, or have a look at some of the super reusable waste free ways to store food like beeswax wraps.

#### Reuse

Reuse empty bottles and jars, old jars of pesto can be used to keep home-made salad dressings or to store snacks for your lunch at work.

Fill and take your own drinks bottle or thermos with you on your adventure, lots of places in Nottinghamshire now offer refills for water bottles too. Remember the **'REFILL RUSHCLIFFE' campaign**.

#### Recycle

If you don't see any recycling bins while you're out and about, please make sure you bring home your plastic bottles and cans so they don't go to waste.

Apple cores, banana skins, strawberry tops and orange peels can all go into your home composting bin to recycle them into compost. I am still collecting plastic bottle tops, which, when sold for recycling, provide money for Dove Cottage Hospice. So drop them off to me when you have saved up a bag full.

If you have to have single use plastic punnets recycle them in the garden. They make wonderful seeds boxes and propagators.





## Sarah Woodhouse Fitness in the Vale

KETTLERCISE- one piece of equipment, one goal, fat loss just got simple! A fun and effective way to challenge your body, change your shape and improve your fitness - come and try it out! Open to all aged 16 and over

LADIES' FITNESS SESSIONS

PERSONAL TRAINING

Contact Sarah for details  
[www.sw-personaltrainer.co.uk](http://www.sw-personaltrainer.co.uk)

## DAVID HEWITT AERIAL SERVICES

**TV/DAB/FM/DIGITAL  
AERIALS FITTED &  
REPAIRED**

digital 

Freeview

**TV/DVD/VCR TUNERS  
LOCAL SERVICE EST 32 YEARS**



**FREE QUOTES  
ALL AREAS COVERED**

**SPECIAL RATES FOR PENSIONERS & DISABLED**



**Call 01664 820430**

Corner Cottage, Clawson Lane, Hickling LE14 3AB

Plastic lemonade bottles are good as bird scarers, cane toppers and earwig catchers among the Dahlias. Just be inventive.

### Second phase of discretionary COVID-19 grants now available for eligible business owners

Rushcliffe Borough Council is now inviting applications from eligible business owners on a second phase of COVID-19 Discretionary Business Grants Scheme designed for those yet to receive central government financial support.

This grant is aimed at small businesses who were not eligible for the Small Business Grant Fund or the Retail, Leisure and Hospitality Fund payments in April and who may have been unsuccessful with applications to the first phase of discretionary support outlined in June.

This central government support has now been reviewed with newly revised terms. Previous applicants do not need to reapply. The Council will contacting them should they now be eligible for the funding.

### VILLAGE EVENTS & Activities

Sadly, for safety reasons, Hickling have had to cancel their Scarecrow weekend and Kinoulton their village show. However I am sure all villages are working on safe community activities. I know there are Zoom quizzes, bingo nights, open gardens and much more. The pubs are now open for socially distanced drinking. I attended the pulling of the first pint by the Local MP Ruth Edwards at the Neville Arms in Kinoulton on July 4.



Stay safe, stay well, be alert and have a wonderful summer

Cllr. Tina Combella  
[Cllr.tcombella@rushcliffe.gov.uk](mailto:Cllr.tcombella@rushcliffe.gov.uk)



Local History Group  
**Hickling**  
Nottinghamshire

[www.hicklingnottlocalhistory.com](http://www.hicklingnottlocalhistory.com)

**Hickling (Notts) Local History Group**  
**[www.hicklingnottlocalhistory.com](http://www.hicklingnottlocalhistory.com)**

follow us on:  



**Paws 4 Thought**

Does your dog need exercising ? Cat need feeding ?  
 Going on holiday or working longer hours ?  
 We can help with dog walking, Pet home visits  
 Small animal and dog boarding in our home  
 House sitting, collection & delivery service for your pet

**Call Sally or Martin**

**01664 823844 or 07890 889915**

**www.paws4thoughtolddalby.co.uk**

National pet sitter registered and insured including CRB.

For all your pet requirements

**WILLIAM  
HERCOCK**

**FOR ALL YOUR BUILDING  
AND DIY SUPPLIES**

SLABS ❖ AGGREGATES  
 WALLING ❖ CEMENT  
 BRICKS ❖ BLOCKS  
 ROOFING ❖ FENCING

ANY AMOUNTS CATERED FOR

**FULL RANGE  
COAL &  
SMOKELESS FUEL**  
 for delivery  
 or collection

**MON - FRI: 7.30am - 5.00pm / SAT: 8.00am - 12.30pm**

The Depot Airfield  
 Dalby Road  
 Melton Mowbray

Tel: 01664 500947  
 Fax: 01664 410650

## Village Directory

|                                    |                                   |              |
|------------------------------------|-----------------------------------|--------------|
| 150 Club                           | Liz Vear                          | 822562       |
| Beavers                            | Susanne Youngson                  | 07884 136890 |
| Bellringers                        | Lynn Irving                       | 07388 348341 |
|                                    | lynn.irving74@gmail.com           |              |
| British Legion<br>Councillors      | Colin Henson                      | 01949 81453  |
|                                    | John Cottee (County)              |              |
|                                    | cllr.john.cottee@nottscc.gov.uk   |              |
|                                    | Tina Combellaack (Borough)        |              |
|                                    | TCombellaack@rushcliffe.gov.uk    |              |
| Cricknet Club                      | P. Parkes                         | 822370       |
|                                    | JD Walker                         | 822244       |
| Cubs                               | Susanne Youngson                  | 07884 136890 |
| Film Society                       | Tim McEwen                        | 822834       |
| Gardening Club                     | Mr B. Baxter                      | 01949 81374  |
|                                    | Mrs B. Grundy                     | 01949 81442  |
| Good Neighbours<br>Scheme          | Liz Vear                          | 822562       |
|                                    | or 07805 407229                   |              |
| Guides                             | Kay Hand                          | 822612       |
| Hickling Pre-School                | Alison Popplewell                 | 01949 81604  |
| Hickling Standard<br>History Group | Nick                              | 07950 558608 |
|                                    | see back inside cover             |              |
|                                    | Dorothy Chahal                    | 822369       |
|                                    | Carol Beadle                      | 822195       |
|                                    | Jane Fraser                       | 822845       |
|                                    | Gill & John Bloor                 | 822682       |
| Kinoulton School                   | Mr Savage (head)                  |              |
| Kinoulton School PTF               | Sarah Parris                      | 01949 823925 |
| Neighbourhood Watch                | Chris White                       | 822152       |
| Nottinghamshire Police             | Control Room                      | 101          |
|                                    | Non-emergency number              | 101          |
| Parish Council                     | Jo Cartmell (Clerk)               | 822866       |
| Parochial Church Council           |                                   |              |
| Rector                             | Maggie Woodward                   | 01949 81183  |
|                                    | maggie.woodward511@btinternet.com |              |
| Churchwarden                       | John Bloor                        | 822682       |
| Treasurer                          | Gill Bloor                        | 822682       |
| Secretary                          | Alex Thomas                       | 823420       |
| Scarecrow Committee                | Dorothy Chahal                    | 822369       |
|                                    | Karen Buckley (Chair)             | 07729 768366 |
|                                    | Sally Jenkins Secretary           | 07971 520711 |
| Scouts                             | Susanne Youngson                  | 07884 136890 |
| Sunday Club                        | see PCC                           |              |
| Vale Readers                       | Elizabeth Evans                   | 01949 81501  |
| Village Hall                       | Jackie Haynes                     | 822364       |
|                                    | Barbara McEwen (Chair)            | 822834       |
|                                    | Tim McEwen (sec.)                 | 822834       |
|                                    | John Robinson (treas.)            | 822762       |
|                                    | Phillipa Jacks (bookings)         | 823622       |
|                                    | Lynn Irving                       | 07388 348341 |
|                                    | lynn.irving74@gmail.com           |              |
| Village Singers                    | Dorothy Chahal (Pres.)            | 822369       |
| Women's Institute                  | Carol Beadle (Treas)              | 822195       |



## Diary

*All events subject to the Coronavirus situation*

|              |      |              |                                    |
|--------------|------|--------------|------------------------------------|
| 17 September | 7.30 | Village Hall | WI - Gardeners' Questions          |
| 15 October   | 7.30 | Village Hall | WI - Spirits of Gin Lane           |
| 19 November  | 7.30 | Village Hall | WI - Work of Vale First Responders |
| 17 December  | 7.30 | Village Hall | WI - Christmas Craft Evening       |

Beaver Scouts 6-8 years, Tuesday 6.15-7.15pm; Cub Scouts 8-10.5 years, Monday 6.30-8.00pm; Scouts 10.5-14 years, Monday 7.30-9.00pm  
All at Kinoulton Village Hall  
Contact for ALL the sections is through Susanne Youngson 0788 413 6890  
gslkinoulton@gmail.com



## Hickling Village Newsletter - Committee

Chair; Tim McEwen - Tel. 822834 or [tmcewen@globalnet.co.uk](mailto:tmcewen@globalnet.co.uk)  
Treasurer/Advertising; Andrew Terry } Tel. 822088 or  
Copy & Secretary; Maggy Jordan } [a.terry125@btinternet.com](mailto:a.terry125@btinternet.com)  
Copy Collection; Jane Fraser - Tel. 822845

Please get in touch with any of us if you have any comments or suggestions. We would welcome any contributions for future issues - articles, opinions, reports, recipes, poems, brain-teasers - whatever you would like to see in print!

### 2020/2021 Copy Dates;

October/November 15.9.20 December/January 15.11.20

Copy must be received before these dates to guarantee its appearance. Please note that the committee reserve the right to edit or omit any material submitted. Opinions expressed in published articles remain the responsibility of the author. Articles may be published anonymously but the committee does need to have details of authorship before publication.

**If you are submitting articles ready for publication - (either typed or in computer format) we would be grateful if you could send it in A5 size.**

**COPY IN ANY FORM WILL BE GRATEFULLY RECEIVED**  
e-mail address - [a.terry125@btinternet.com](mailto:a.terry125@btinternet.com)

- please make sure that attachments are sent in Microsoft Word or Publisher compatible formats.

### **Handwritten Contributions.**

If you have handwritten contributions please pass them for typing to:  
Jane Mill Lane Cottages

Otherwise please continue to pass any contributions or ideas to any of the other committee members. Thank You!

### Advertising Rates (one advert for one year - 6 issues.)

|                          |                  |                    |
|--------------------------|------------------|--------------------|
| Front inside cover - £65 | Back cover - £80 | Quarter page - £30 |
| Half page - £45          | Full page - £60  |                    |

(enclose payment with copy for the advert and give to a committee member before the copy date.)

**Personal wanted/for sale adverts are FREE.**