

The

Hickling Standard

Village Newsletter for
Hickling and
Hickling Pastures

Vol. 128 February - March 2020

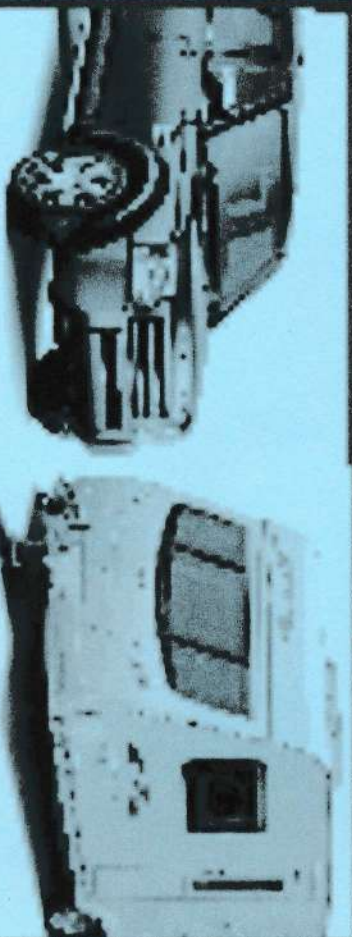


Mobile Car & Caravan Cleaning

Choose from... Car Wash • Mini Valet
• Mini Valet and Polish • Full Valet
Mobile Caravan Cleaning
Car Paint & Fabric Protection
Fully Mobile Service

07949 518 366

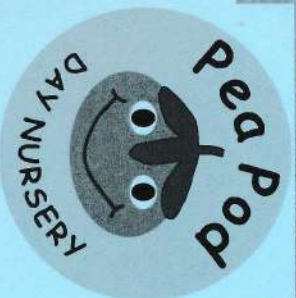
www.smartvaletinguk.com



Look Smart, Be Smart, Call Smart!



Pea Pod Day Nursery is a small, family run 29 place day nursery at Hickling Pastures, on the A606 between Melton and Nottingham, only a few yards from the A46 roundabout.



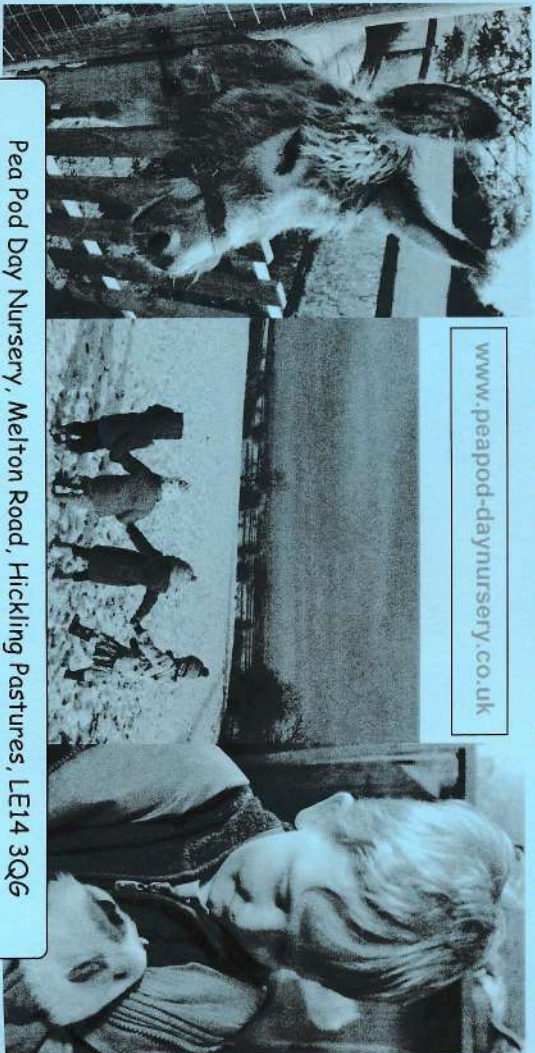
The nursery is split into 3 separate rooms which enables us to promote a home from home experience with a very friendly, warm environment and in our rural setting the children have the opportunity to explore open fields and have access to a number of different animals.

Our 11 place pre-school room is led by Amy who is a qualified Early Years Teacher.

We plan our daily activities around the EYFS and foster children's interests. Amy builds and challenges children's learning to ensure all children have the qualities to become good listeners, are friendly, happy, independent learners who have the confidence to have a try at everything! We ensure all children have the foundations in place for them to have the qualities to succeed with love for learning, ensuring the children have a smooth transition when starting school.

Call in to have a look around for more information, or ring Louise on 01949 81522

www.peapod-daynursery.co.uk



Pea Pod Day Nursery, Melton Road, Hickling Pastures, LE14 3QG



**Pea Pod Day Nursery is
"OUTSTANDING"**

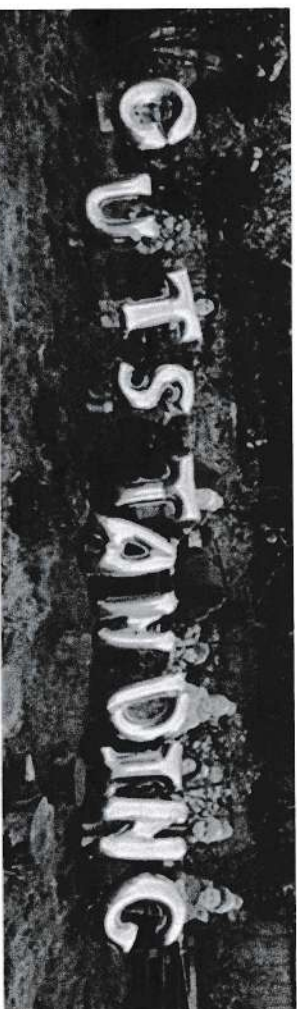


**Pea Pod was assessed as outstanding in all four categories-
quality of education, behaviour & attitudes, personal
development and leadership & management.**

The inspector noted:-

The manager and staff are passionate about providing a nursery where children are happy and can learn in a way that suits their needs. Staff are really keen that children spend as much time as possible learning outside so that they have the freedom to move around and explore the environment. Staff have high expectations of all children and carefully plan and provide a wide range of activities that captivate children's interests. The manager and lead early years teacher are excellent role models for the staff. They have developed fantastic outdoor areas where children can explore, investigate and experience new challenges. Children are really confident and their behaviour is exemplary.

The outstanding rating reflects the hard work of each member of our team, we could not be prouder! We all work tirelessly to provide the children in our care with the very best start in life and are absolutely thrilled to have received this recognition from Ofsted. Our outdoor provision and forest school is an amazing experience for our children. The children are always really excited to visit the forest school area and get involved in many different activities such as finding insects and toasting marshmallows!



JUMBLE SALE 2020

Saturday 15th February
2.00 p.m.

Hickling Village Hall

Donations of Jumble will be gratefully
received on SATURDAY MORNING-
Cakes, Toys, Books, Nearly-New,
Bric-a-Brac, Clean Textiles, TOMBOLA
PRIZES etc.

Admission 30p

Can you help on the day??

Contacts 01664 822398 / 01664
823420

Proceeds to St. Luke's Church, Hickling

Hickling Film Society

Film	Date
Downton Abbey	February 11th
Peterloo	February 25th
Shoplifters	March 10th
Woman at War	March 24th

Downton Abbey: Described by The Guardian as: "ridiculous, vanilla-flavoured fun." The beloved Crawleys and their intrepid staff prepare for the most important moment of their lives. A royal visit from the King and Queen soon unleashes scandal, romance and intrigue - leaving the future of Downton hanging in the balance.



'Light-hearted stuff': Elizabeth McGovern and Hugh Bonneville in *Downton Abbey*.

Peterloo: In 1819, British forces charge on a peaceful pro-democracy rally at St Peter's Field in Manchester, which results in the Peterloo Massacre. *The Guardian*: "... grit and brilliance in Mike Leigh's very British massacre. A biting sense of topicality pervades this passionate account of the murders of protesters at a mass pro-democracy protest." Excellent reviews.



Star turn ... the popular orator Henry Hunt, played by Rory Kinnear, speaks at the St Peter's Field protest, in *Peterloo*.

Shoplifters: A marginalised band of thieves living on the poverty-stricken fringes of Japan steals the show in this masterly drama. They rescue a little girl from the streets and support her, although they have almost no money, and then something happens Has won many awards and has amazing reviews.



Shoplifters in modern Japan.

Woman at War: Halla is a 50-year-old environmental activist who crusades against the local aluminium industry in Iceland. As her actions grow bolder, her life changes in the blink of an eye when she is finally granted permission to adopt a girl from the Ukraine. Excellent reviews.

Samarpan Ashram Yog Meditation Centre - Long Acre
Long Acre, Melton Road, Hickling Pastures, Melton Mowbray. LE14 3QG
(HMRC Charity No: EW19886)
website: www.samarpanmeditationuk.org

FREE taught classes on Wednesday, Thursday and Saturday.

Wednesday 10.30am – 12.00pm (please check the website for up to date information)

Hanwell Wine Estate

Melton Road, Hickling Pastures, LE14 3QG

Contact number: 01949 81393

Please book online: www.hanwellwine.co.uk

Every Thursday and Saturday

1.00pm - 3.00pm ongoing 5 week or individual courses

Samarpan Ashram Yog Meditation Centre - Long Acre

Contact details:

Please ring Jaya Pisavadia (Centre Manager) to book meditation class at the centre.

If you would like us to visit your group and teach meditation then please contact

Hansa Heena Thoban (Education Manager)

Contact Number: 0194981103

Mobile Foot Health Practitioner

Safe and effective treatment in
the comfort of your own home

- Routine Nails Trimming
- Thick Nails & Ingrown Toe Nails
- Fungal Skin & Nails
- Hard Skin, Callous & Corns
- Cracked Heels
- Diabetic Foot Treatment
- Verrucae.

www.tanyacomfyfeet.co.uk



Excellent
cosmetic
result

Tanya ☎ 077714876006

DipCFHP, MPSPract



Halldóra Geirharðsdóttir 'commands the screen throughout' as green
activist Halla in *Woman at War*.

The usual fine wine and posh nibbles and quite comfy seats.

Tuesdays at 7.30 in Hickling Village Hall

If you wish to be included on the Film Society email list, please
email Tim on tmcewen@globalnet.co.uk.

Circular Walk

12 March 2020, walk followed by lunch at The Plough.

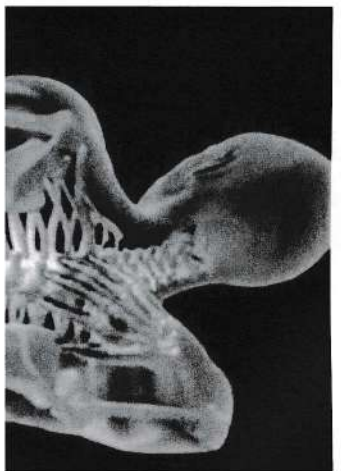
Meet at The Basin 10.30am for a circular walk.

Telephone Pauline Chell 01664 822835 if you wish to join us
or for more information.

Massage Therapy and Sports Massage

Heidi Unwin

Did you know muscle imbalances cause pain in your body, because one group of muscles has overpowered another group of muscles and given you say pain in your back. What's even more interesting is the muscles affecting your back might not be in your back.



If for example you sit all day for your job it will over time lead to weak stomach muscles, weak bottom muscles and the muscles in the back of your legs because they are not doing anything. Then the muscles in the front of your hips, your thigh muscles and your lower back muscles get tight trying to keep you upright.

Overtime the imbalance between the muscles of your lower back, legs and stomach can cause you back pain. This will affect other things you like to do when not at work, you may like to cycle, go running, walking your dog and you always get the same pain and discomfort during or by the end of the activity, because your muscle imbalances are still the same.

Another common example of imbalance is your shoulders, they might be rounded forward and so your head is also pulled forward, over time this will give you neck pain. Did you know that for every inch your head moves forward of your spine you add an extra 10 pounds of weight. The neck pain will eventually turn into shoulder pain and then back pain and likely headaches. What will happen is the muscles in the front of your neck and chest will become short and tight and the muscles at the back will be long and weak.

Having an assessment to identify muscle imbalances is a wonderful start to relieving you of any pain you might have, or restriction of movement that stops you from doing the things you enjoy, along side a prescriptive massage therapy program to help you learn about your imbalances and how together we can get you moving more freely and keep the imbalances from coming back.

Here's to a happier, healthier you.

If you are interested in treatment please call me on

07757 707725 or hello@heidunwin.com

Free assessment if you bring this advert with you.

HICKLING pre-school

HICKLING PRE-SCHOOL NEWS

Places available!

Do you need childcare? We have a wonderful team of qualified and enthusiastic staff and are based in the village hall in Hickling.

We are open Monday to Friday 09:15 - 15:15 for children aged 2-5 years and our fees are only £4.30 an hour.

We accept 30 or 15 hrs government funding, childcare vouchers and are also registered for the governments Tax-Free Childcare program.

We have **close links with Kinoulton Primary School** and offer termly visits up to school to help prepare the children for the transition to 'big school'.

For children aged 3+, wrap around care is available from The Village Hideout at Kinoulton Village Hall during term time (7:30am – 6pm). They provide transportation to and from the Pre-School, so ideal for working parents!

We can offer free 'taster' sessions for all new starters, please call the pre-school on 07950558608 or email hicklingpreschool@gmail.com for more information.

Term dates

We will be closed for half-term the week commencing 17th February. Doors open again on Mon 24th February so even though it's an INSET day for Kinoulton Primary School we are still open! Our last day of term is Friday 3rd April.

Quiz night

Back by popular demand our annual quiz night will be held on **Friday 20th March** at 7.30pm in Hickling Village Hall. Tickets are £10 per person and include a delicious Italian supper. There is a maximum of six per team and please BYOB! To **reserve your tickets** please call Carol on 07950558608 or email us at hicklingpreschool@gmail.com.

Fundraising

Did you know that you can support Hickling Pre-School simply by doing your shopping online? We've registered with easyfundraising.org.uk which will allow our friends and family to shop at over 4000 big name retailers such as Argos, John Lewis, ASOS, M&S, Sainsbury's, Boots, and Clarks and earn FREE donations for the pre-school! You can visit

<https://www.easyfundraising.org.uk/causes/hicklingpreschool/>

to shop and earn money for the pre-school. Alternatively you can download the App and order direct from your phone. Search for 'easyfundraising' in the App Store to download the free App – don't forget to select Hickling Pre-School as the cause you'd like to donate to before you start shopping!



HICKLING CRICKET CLUB PRESENTS

An Evening with Matthew Hoggard

7:30pm @ Hickling
Village Hall

TICKETS ARE £20, WHICH INCLUDES
A FISH AND CHIP SUPPER, BAR,
CLUB RAFFLE & Q & A WITH
MATTHEW HOGGARD

For tickets, please contact either Charles Hogg (07967 734477) or
Phil Parkes (01664 822370).

Friday 13th
March 2020

Venue: Hickling
Village Hall, Main St,
Hickling, Melton
Mowbray LE14 3AE

Hickling Cricket Club

In the summer of 2019, Hickling CC had an evolutionary summer. We saw over fourteen members from the village represent the club itself, in which seven were regulars and eight were below the age of twenty-one. We gained promotion to Division C in the South Nottinghamshire Cricket League on a Saturday which will see the club mix it with some of the biggest clubs from around the county, whilst being crowned champions of the Melton Burrough League's 3rd Division during the club's first appearance in the league on Tuesday nights.

Tuesdays gives the club an excellent platform to introduce players to the team and to get them involved. Playing in Division 2 next year will hopefully provide the same opportunity to our emerging players to get game time, improve and cement a regular place. It is also important to note that we want team mates to enjoy their Hickling CC experience, we are a social lot and I must thank The Plough in Hickling for their brilliant hospitality after games.

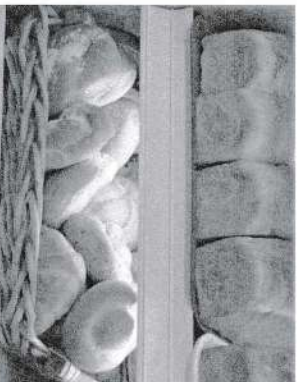
It's vitally important for the club to continue to grow, therefore fundraising events are crucial to enable to us get bigger and better year on year. On Friday 13th March 2020, Hickling CC will be hosting another 'Evening with...' fundraising event at Hickling Village Hall. This year, our guest speaker is England and Yorkshire legend Matthew Hoggard. The '05 Ashes winner will be sharing many stories of his career, and how that '05 England era stole the nations heart by beating the Aussies. We're hoping it'll be as much of a success as the Blowers and Derek Randall nights which we held back in 2016 and 2017.

The night will kick off at 7:30pm with a fish & chips dinner, raffle & Q & A with Matthew Hoggard. Tickets are £20 and this will include a fish & chip supper provided by the regular chip van we see in Hickling. We will also be selling raffle tickets and a bar will be available all evening. After the amazing success of past events, we know that tickets will sell out fast so please contact either myself, Charles Hogg or the club secretary Phil Parks to book your seat for what will be a brilliant evening!

Charles Hogg 07967 734477, Phil Parks 01664 822370

Squirrel Stores

The biggest "little" shop in the Vale of Belvoir



- ♦ Greeting cards and gifts
- ♦ Artisan jams, chutneys, honey etc
- ♦ Newspapers and magazines
- ♦ Wines, beers, local ales and ciders
- ♦ Freshly baked Hambleton bread and produce delivered daily
- ♦ Selection of butcher's meat produce and Melton Mowbray pork pies
- ♦ Local cheeses
- ♦ Large variety of fresh fruit and vegetables (personal weekly fruit delivery and veg boxes available)
- ♦ Dry cleaning service
- ♦ Fresh sandwiches, sausage rolls, samosas etc
- ♦ Hand tied bouquets

Opening hours:

Monday to Friday 7am to 7pm

Saturday 7am to 5pm

Sunday and Bank Holiday 8am to 1pm

01664 822315

The Sands, Long Clawson

Hickling Village Hall

FUN QUIZ NIGHT

Friday 28th February 2020, 7.30pm

Teams of 4-6 players. Bring your own drinks/snacks

For tickets & more information contact Pauline

01664 822835

Lots of prizes including a "Fantastic Booby Prize"

£4 per person

In the meantime a Sudoku game to do
Bring it completed to the Quiz Night
& enter it in the draw for a prize

							2	6	5
									9
	4		2			8	7		
5		1	9						
2				5					6
					1	9			4
		8	5			7		2	
7									
1	3	6							

LADY FRIDAY Are you short of TIME?

I could support you when you're working or on holiday

PETS

Regular or occasional dog walking & pet care at your home

CHILDREN & ELDERLY RELATIVES

Meet children from school or take them to their recreational activities*
Accompany elderly relatives to appointments or shopping, or whatever

HOME

Water plants, take mail in & generally check all is well

Do not hesitate to ask - I am mature and versatile!
References available on request, Inc DBS*

Angela Sallis, 6 Melton Road, Long Clawson, LE14 4NR
01664 822597 angela_sallis@btinternet.com

AEROBICS AND TONE

Low impact.
Fun and friendly.
All ages and abilities welcome.

Great way to get active.

Every Wednesday 9.15am.
Free drink at the Old Wharf
after the class.

1 FIT

KETTLEBELLS

Fat burn and conditioning.
Full body toning.

For those looking to improve fitness levels.

Every Thursday 7pm

For information and class locations call James on 07849 329221

the W INSPIRING WOMEN

Another year, another programme. We go to endless trouble to cater for and please all our Members. We have certainly had some memorable meetings in 2019. Two made a huge impression. One was the lady who made quilts for severely injured soldiers who are having a long hospitalization. The brave soldiers frequently ask for their regional mental colours and emblems and ensure the comforting quilt is always with them. The other was the volunteer from Blood Bikers. His organization turn out in all weathers 24 hours, 365 days to transport blood, data, medicine etc to medical units who require it urgently.

Our hearts were also touched by the response to our charity work. The bags of toys we sent to a Nottingham association who ensure children receive Christmas presents was more than worth the effort. I know Members got joy from the fact that some unknown child would have a smile instead of feeling rejected. Once again our Members were very generous in giving to the Clifton food bank. It is terrible to think that people in this country are going hungry.

Laughter and friendship being the medicine for the soul, our programme hopefully made our Members have the feel-good factor. It is not for the want of trying.

Our December 2019 meeting was held at Hanwell Vineyard as we clashed with the General Election voting day. We were made very welcome and held our meeting in a warm attractive workshop which was ideal for our speaker and demonstrator to teach us how to block print using real Indian blocks. I now have a laundry bag with an elephant, a peacock and a 'Paisley mango' stamped on it. Others made an intricate tree decoration.

We held our Christmas supper on 19 December in the Plough for over 50 people. The food was good, the service excellent, and the place looked clean and inviting. It is great having our favourite pub serving the community again.



Tel. 01664-822471

Keith Wadkin & Son

Tree Specialist

Hickling

Melton Mowbray, Leics.

LE14 3AQ

Tree Felling
Lopping,
Pruning,
Ground
Clearance,
Tree Surgery,
Fencing,
Planting,
Logs,
Wood
Chipping,
Hedges
Maintained.
Fully Insured

Established 1959

R & E L Birley Motor Engineers

East End, Long Clawson. Telephone 01664 822450



Approved MOT testing station.



Servicing and repairs on car & commercial vehicles.



Tyres, balancing, punctures & wheel alignment.

Accident and breakdown recovery service.

Forecourt sales for Petrol, Diesel & Oils etc.



Established in Long Clawson for over 40 years.

E-mail: birleys@long-clawson.com Web page: <http://birleys.long-clawson.com/>

So what for 2020? Our biggest worry is lack of money. We pay 43 pounds per annum membership which is set by HQ but we only receive half of this. Half is spent on running the WI organization. To survive we have to be better than tv for members to turn out in all weathers for meetings, and ours do. The speaker and hire of the hall account for most of our income, so we have to fundraise, or close. Since we have been operating more than 70 years non-stop, this is a challenge. As everyone knows, traditionally one associates the WI with tea and cakes, or rather cake, cake, cake. This is no longer the case. Not only do we know we should not eat cake, but our Members, on the whole, have more important things to do than make it. I admit we used to fundraise making cakes as we always had a stall at the country fair. Our small business making teas for coach parties seems to have stopped as coach plus teas is just too expensive for visitors. Last year we received 100 pounds from the Scarecrow committee which was gratefully received. We therefore are planning 2 fundraising events: which we hope will be well supported:

15 October. Spirits of Gin Lane organized by Madam Parboiled. A hilarious evening based on the famous painting by Holbein. Yes, there will be gin!

7 November. Hickling WI Christmas gift Fair.

This year too we are starting a Luncheon Club who will meet every other month.

Preparing our programme for 2020 last summer we chose correctly for January 16. Clive Rudd is certainly a 'feel good' entertainer. I apologises for the noise of loud singing and laughter which may be heard around the village hall. Don't complain, just join us!

Do join us for all or some of the meetings which may interest you. Men welcome. Only 5 pounds for visitors each evening.

Hickling WI wishes everyone a wonderful 2020, good health and happiness.

The Vale Physiotherapy & Sports Injury Clinic

Established 1986 Practice Principal is Elizabeth Smith

7 highly experienced & chartered Physiotherapists
Specialising in:

- ▶ Sports Injuries
- ▶ Neck, Back & Limb Pain
- ▶ Work Related Injuries
- ▶ Phlebotomy
- ▶ Acupuncture (for pain relief)
- ▶ Headaches
- ▶ General Rehabilitation
- ▶ Shockwave Therapy, Laser & Ultrasound
- ▶ Domiciliary Visits including Neurological Conditions



Excellent patient satisfaction record.
Please give us a call if you are suffering with aches & pains which are interfering with your enjoyment of life.

Call 01664 822234

to arrange an appointment.

Website: www.valephysio.co.uk Email: info@valephysio.co.uk

Corner Cottage, Main Street, Hickling, North Lincolnshire, LE14 3AB

DAVID HEWITT AERIAL SERVICES

**TV/DAB/FM/DIGITAL
AERIALS FITTED &
REPAIRED**

digital TV

Freeview

TV/DVD/VCR TUNERS

LOCAL SERVICE EST 32 YEARS



FREE QUOTES

ALL AREAS COVERED

SPECIAL RATES FOR PENSIONERS & DISABLED

Call 01664 820430

Corner Cottage, Clawson Lane, Hickling LE14 3AB

Trent Upholsteries Ltd.

Master Upholsterers

Reupholstery Specialists and
Manufacturers of Quality Upholstery.

Member of the Association of Master Upholsterers.
Select from our large range of fabrics and trimmings.

Traditional and modern upholstery methods.
Hand built upholstery to your measurements using beech
frames and coil springing.

**Trent House, Croydon Road, St. Peter's Street,
Nottingham. NG7 3DS.**

Telephone: 0115 978 6699

Website: trentupholsteries.co.uk

E-mail: info@trentuph.co.uk

Visit our showroom or phone and ask for advice.

Private car parking.

JUMBLE SALE

Saturday 15th February

2.00 pm

Hickling Village Hall

Donations of Jumble will be gratefully received from 9 a.m. -

Cakes, Toys, Books, Nearly-New, Bric-a-Brac, Textiles,

Tombola Prizes etc.

Could you help sort or sell please?

Contacts: 01664 822398/822835 for further information

Proceeds to St. Luke's Church

HICKLING HISTORY GROUP INFORMATION BOARDS

The Hickling History Group hope to be able to erect 3 information boards - at the Village Hall, by the Church and at the Wharf.

Hickling is unique and it was felt important to share its history and culture with both villagers and visitors in an unobtrusive and sensitive manner so as not to be detrimental to the character of Hickling in any way. The information boards, similar to those found in other villages, seem to fulfil these criteria.

After much hard work the History Group has raised enough money to do the first board at the Village Hall.

If you have any experience doing such projects; if you can help us financially to do the other boards; if you know how to apply for grants for the boards or if you would like to be involved with this project we would be delighted to hear from you.

Hickling History Group

Carol Beadle, Dorothy Chahal, Gill and John Bloor, Jane Fraser

2020 CHURCH SERVICES (Sundays unless stated)

		Kinoulton		Hickling		Upper Broughton	
Date	Time	Service	Time	Service	Time	Service	
Feb 2		(no service)	6.30pm	Holy Communion Mission P'ship Service		(no service)	
Feb 9	11.00am	Morning Prayer	9.00am	Holy Communion	10.00 am	All Age Family Wor- ship	
Feb 16	9.00am	Holy Communion	10.00am	All Age Family Worship	11.00am	Morning Prayer	
Feb 23	11.00am	All Age Worship Family Service	6.30pm	Holy Communion	9.00am	Holy Communion	
March 1	9.00am	Holy Communion	6.30pm	Evensong BCP	11.00am	Family Holy Com- munion	
March 8	11.00am	Morning Prayer	9.00am	Holy Communion	10.00 am	All Age Family Wor- ship	
March 15	9.00am	Holy Communion	10.00am	All Age Family Worship	11.00am	Morning Prayer	
March 22	9.00am	Holy Communion said		Mothering Sunday	10.00am	Mothering Sunday	
Mothering Sunday	10.00am	Mothering Sunday Service		service to be held at Kinoulton		Service	
March 31		(no service)		(no service)	10.00am	Holy Communion Joint Benefice Service	

St. Luke's Hickling February / March 2020 Rota

Date	Service	Sides- person	Refresh- ments	Flowers	Cleaning
2nd February 6.30 pm Candlemas	Mission Partner- ship Holy Communion	J. Bloor A. Thomas	PCC	E. Vear	D. Chahal A. Thomas
9th February 9.00 am	Holy Communion	J. Bloor	A. Thomas		
16th February 10.00 am	All-Age Worship	A. Thomas	D. Faulks	A. Thomas	R and L Moro- ney
23rd February 6.30 pm	Holy Communion	J. Bloor			
26th Feb Ash Wednes- day	MISSION PARTNERSHIP SERVICE 7.30 PM AT ALL SAINTS COTGRAVE				
1st March 6.30 pm	Evensong	A. Banner		Lent	M. Smith +
8th March 9.00 am	Holy Communion	J. Bloor	M. Simp- son	Lent	
15th March 10.00 am	All-Age Worship	D. Faulks	E. Vear	Lent	M Simpson V.Haines
22nd March 10.00 am	MOTHERING SUNDAY HICKLING AND KINOULTON JOINT SERVICE AT KI- NOULTON				
29th March 10.00 am	BENEFICE GROUP HOLY COMMUNION SERVICE AT UPPER BROUGHTON				

Letter from St Luke's

As I write this article, January is just ten days old. The Christmas season is over, the tree has gone and the decorations are being stored away.

After the excitement, fun and family gatherings, and all the joy of Christmas – not to mention the possible over-indulgence – January comes as a dull reminder that we are still in a dark, cold winter and that, in Eric Morecambe's words '*Life is not Hollywood, life is Cricklewood.*'

I have always felt the same about January, and so it is that, each year, I find myself looking for optimistic signs that spring is round the corner and that the dark tunnel has an end. For example, I always look for the first sign of snowdrops at the top of the garden and, yes, they have arrived with their tiny delicate white flowers pushing determinedly upwards. By mid-February, they will become thick carpets of white under the trees. I watch for the collared doves picking up sticks and flying off with them, and the grey squirrel coming back to try to work out where it buried the peanuts last year – usually in our plant pots!

But there is always something new which comes along each January to make me aware of how fortunate I am in my own situation. This year was no exception. Here are just two examples.

A couple of days ago, the centre double-page spread in my newspaper showed two small boys in Kabul, Afghanistan. The caption reads '*Children warm their bare feet under a blanket in the snow as they wait for customers at their hilltop grocery stall.*' Their 'stall' consists of a makeshift set of three shelves, held together with rope and plastic, on which are haphazardly displayed cans and bottles of drink and a few boxes of snacks. In front of the stall are a couple of hookah pipes and a plastic-wrapped case of bottles of water. There are probably 20 centimetres of snow on top of the stall, and it is still snowing. The boys are no more than primary school age and one of their bare feet is showing under the thin blanket. Presumably they have been sent to this 'stall' to try and raise a little money. I am looking at the picture in my warm, centrally heated home with a mug of hot tea in my hand.

The second 'strike' came in the words of the Archbishop of Canterbury's New Year message. At a time when our own country is caught up in political turmoil, when the superpowers of the world seem not to care whether or not they push the 'destruct' button, when the disadvantaged seem to be victims of other people's success, when there is so much fear, disharmony and injustice all over the

planet, it is hard not to feel a sense of hopelessness and helplessness. But we can start small. Justin Welby seemed to recognise this, broadcasting his message from a lifeboat station, about whose team he said this: 'As we wonder how we are going to start healing some of the divisions that we've seen over recent years, the sort of people at this lifeboat station are signs of hope.' He went on to say: '*Let's go for a heroic new year's resolution. Let's resolve to reconnect. To reach out to just one person we don't know, or from whom we have drifted apart. Pick one person. Pick up the phone. Send them a text. Meet them for a cup of tea. Make that connection. Let's begin cementing our unity one brick at a time.*' Linking it to a well-known story, he added, '*When we hear someone described as a Good Samaritan, we think about that person taking the time to help another. But it's a story told by Jesus about someone taking the risk of reaching out to another who was very different to them. Yes, the person needed help – but they also needed connection.*'

Maybe we can bring some light into our new year by making a connection.

Sheila Hill

Reverend Maggie and the Ministry Team at the St Luke's Group of Churches invite you to join with us at the following special services.

Ash Wednesday 26th February

The Annual Ash Wednesday service will this year be held at our Mission Partnership Church of All Saints Cotgrave at 7.30pm where ashes will be imposed onto the foreheads of those who wish to receive them.

Mothering Sunday 22nd March

At Kinoulton Church a said service of Holy Communion will be held at 9.00am

followed by a joint Hickling and Kinoulton All Age Family Service to celebrate Mothering Sunday at Kinoulton Church at 10.00am

there will also be an All Age Family Service to celebrate Mothering Sunday at Upper Broughton Church at 10.00am

Faulks Plant Hire

Reliable • Available • Quality

Suppliers of ...

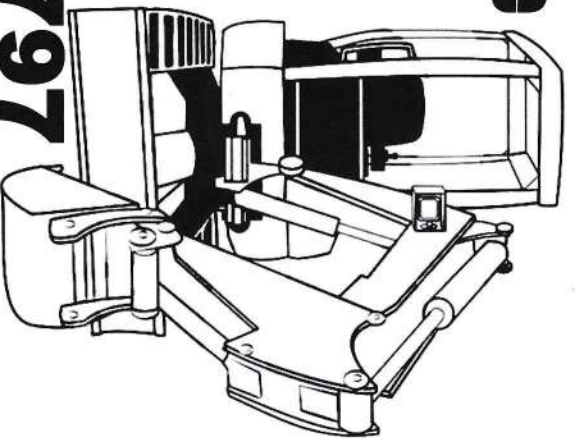
- Mini Diggers
- Site Dumpers
- Compaction Equipment

To discover more visit ...

www.aefaulks.co.uk

01664 822797

The Wharf, Main Street, Hickling, Melton Mowbray, Leicestershire LE14 3AH



**YOUR LOCAL INDEPENDENT
DRY CLEANING SERVICE**

- Repairs and Alterations
- Day and Evening Wear
- Silks and Wedding Dresses
- Duvet, Eiderdowns and Sleeping Bags
- Laundered Shirts Service
- Free Removal, Collection and Re-Hanging of Curtains

13 Main Street, Keyworth, Nottingham NG12 5AA. Tel: (0115) 937 6599

WELCOME TO THE ROARING TWENTIES

The first News of 2020 for Neville & Langer Ward

GLASS RECYCLING

Extra staff were employed over Christmas and New Year at the bring glass sites as Rushcliffe collect an incredible 2,500 tonnes of glass over the holiday period. Thank you to all who take recycling seriously.

LOTS OF COMPLIMENTS received for the bin collections –

Rushcliffe waste team were named ‘the best bin men ever’ by one grateful family in Rushcliffe recently.

RUSHCLIFFE the GO TO choice for bulky item collections says one resident. “I really hope this message reaches a person as I want to say how impressed I have been with your mattress collection service. I only booked the removal last week after having issues with private collectors and I contacted Rushcliffe as a last resort”.

BOTTLE TOPS

I continue to lobby Rushcliffe for help with collection of bottle tops for recycling across the Borough. David Williams, our Ward bottle top collector, who received the Volunteer of the Year award at the recent awards ceremony posted the following thank to all –

A BIG THANK YOU

TO YOU ALL

- ❖ September 2018 – 540kg
- ❖ February 2019 – 560kg
- ❖ June 2019 – 700kg
- ❖ August 2019 – 1.3 tonnes
- ❖ October 2019 – 900kg
- ❖ January 2020 – 1tonnes

All money received is gift aided to

Dove Cottage Day Hospice

Registered Charity Number: 1057941

For more information please contact

d.williams514@btinternet.com

Thank You



Vale Electrics

Electrical Contractors

Specialists in all types of Industrial,
Commercial and Domestic Installation

1a Station Lane, Old Dalby,

Leicestershire LE14 3LR

Telephone (01664) 822 217

National Inspection Council for
Electrical Installation Contracting

njc EIC

APPROVED CONTRACTOR



Creative Curtains

MADE TO MEASURE SOFT FURNISHINGS

'TWIN TREES,' PARADISE LANE,

OLD DALBY.

01664 822475



A.R. PEET LIMITED

Specialist Retailer of Wood, Gas, Electric and Multifuel
Stoves

Tel: 01664 822397

www.arpeetstoves.co.uk info@arpeetstoves.co.uk

HOME FARM, MAIN STREET, HICKLING

REPORT A POTHOLE to Nottinghamshire County Council using their online report system marking the exact location of the pothole on a map <https://www.nottinghamshire.gov.uk/transport/roads/potholes>

How long will it take them to repair the pothole I've reported?

They aim to send an inspector to the site within 10 working days after receiving a report of a pothole. The inspector will then assess the pothole and either repair it immediately or call for the support of a maintenance team depending on its size. If you have provided an email address when you reported the pothole, they will inform you of what action was taken from this inspection. (Taken from NCC website)

NEIGHBOURHOOD PLANS

Upper Broughton are set to bring their plan to referendum on 30th January 2020 - Colston Basset - the examiner's report has been received and will go to cabinet in February then Full Council in March - Hickling are still preparing their draft plan for presentation to the Parish Council and Rushcliffe later this year.

TREES



A wonderful response to this years Tree planting scheme
4600 new trees (Crab Apple & Rowan) should now be growing in residents' gardens across Rushcliffe. Planting should begin shortly for the Parish Trees.

PLANNING is always a contentious and emotive issue; hence applications are finally decided at Borough level. I am hoping to get the planning process and communication with Parish Councils and residents scrutinised. I would therefore like to hear from you if you have any concerns with regard to the planning process, communication, and how you are informed regarding planning applications. Please e mail me as always on

Cllr.tcombella@rushcliffe.gov.uk

HICKLING PARISH COUNCIL

Summary of minutes of a meeting of the Parish Council held on Tuesday 3rd December 2019 in Hickling Village Hall commencing at 7.30pm.

Councillors: Reid (Chair)

Barrett Lane
Prosser

Also in attendance, Borough Councillor Combella, the Clerk – Jo Cartmell and three members of the public.

Apologies: Notts. County Councillor Cottey, Cllrs Greenwood, McQuat and Smith.

Acceptance of minutes of the meeting held 22nd October 2019: It was AGREED that the minutes be accepted as a true record of the meeting.

Open session for the public **limited to 15 minutes**.

A resident raised concerns with regard to speeding within the Parish. It was noted that the issue appeared to be getting worse. The resident asked that the Parish Council investigate the possibility of having a 20mph speed limit replace the current 30mph limit. The Clerk noted that the Parish Council had requested a 20mph zone around the Village Hall and the Canal Basin a couple of years ago and that was deemed by the County Council not to meet the criteria necessary for the implementation of a 20mph zone.

The Clerk also noted that the Parish Council requested an extension to the 30mph zone on Bridegate Lane, this was also deemed as not an option due to financial constraints and a lack of data which suggested that this extension was required.

The Clerk suggested that the Parish Council ask Via East Midlands to conduct a Speed Survey in the Parish to see if evidence could be gained to support requests to Via Est Midlands for assistance with speed awareness initiatives within the Parish.

A resident also asked for clarification with regard to the next stages of the Neighbourhood Plan. As the Chair of the Neighbourhood Plan was present, a brief update was given which is shown in the Neighbourhood Plan section.

Planning Matters.

Applications:

*Application discussed between meetings but still pending decision

*19/02353/FUL: Proposed extension to temporary planning permission (17/02052/FUL) for the log cabin to be extended until November 2020 - Long Acre Melton Road Hickling Pastures

The Clerk was asked to submit an objection to this application if the application was still open. (The deadline had passed for responding.)

19/02548/LBC - Development: Installation of Satellite Dish: Jasmine Cottage Main Street

Hickling

No Objection.

Decisions

Permission granted for the following applications:

19/01563/FUL: Conversion of stables to gym, construction of new external stores and kennel, and internal alterations and proposed external electrical back-up generator - The Old Rectory Main Street Hickling.

19/01825/OUT Outline planning permission for erection of new agricultural workers dwelling (with some matters reserved) - Land East Of Longridge, Clawson Lane.

Other Planning:

19/02578/PAQ: Application for Prior Approval for conversion of cattle shed to 1no. dwelling house - Barn At Hilltop Farm, Melton Road, Hickling Pastures

No comments to be submitted for this conversion.

Neighbourhood Plan

Steering Group Update: Chair of the Steering Group confirmed that the Steering Group was now awaiting for the work to be completed by AECOM who are the consultants appointed by Locality (this organisation manages the funding grants on behalf of Central Government) to ensure that all the relevant information has been compiled so a focused consultation can take place with the Neighbourhood, following discussion with the Parish Council.

Finances – including payments and anticipated outgoings.

The Clerk noted that the grant to provide funding for the coming months of the Neighbourhood Plan had now been applied for and the application had been successful. The Parish Council would be in receipt of £2,850.00 shortly. The Clerk also noted that a technical support grant to fund the work to be completed by AECOM had also been approved. That money would be paid directly to AECOM from Locality and was not the responsibility of the Parish Council.

Environmental Matters.

Church Farm slurry pit – Bridegate Lane highways issues.

An item of correspondence had been received highlighting issues that had been encountered from the emptying of the slurry pit belonging to Church Farm on Bridegate Lane. The slurry had been emptied out of permitted time period specified for muck spreading but there was no indication as to whether this had spread on the land or retained in storage by a third party.

The main concerns raised related to the amount of mud on the road, the slurry transport vehicles waiting on the verge to enter the site and consequently the damage to the verge. The road wasn't cleaned until the following morning, which meant there was a large amount of mud on the road in exceptionally poor weather conditions and with drivers unable to see the danger in the dark.

The Clerk was asked to write to the owners of Church Farm and politely request that the owners restore the verge and make good the damage that was done and ensure that the roads are cleaned immediately after the cessation of work at the site.

It was mentioned that signs noting the slippery road surface may have been a good idea, warning drivers to slow down. It was suggested that this may have indicated a level of liability by the owners which is why there were no signs sited warning drivers of the dangerous road surface.

Community matters.

Telephone Kiosk/Defibrillator(s): The Clerk informed the Council that the Hickling Pastures defibrillator was showing a service issue and was awaiting instruction from the manufacturer as to how to have this issue resolved. The defibrillator was currently offline.

Annual Parish Meeting.

Councillors were asked to consider what they would like to do for the next Annual General Meeting. Initial ideas involved focussing the event around speeding. Members also felt it would be better to have the meeting later in the year than April. The event details would be confirmed at the next meeting.

Village Maintenance Contract.

The Clerk was asked to send out invites to tender for the Village Maintenance contract.

Finance:

Balance of Accounts: Current account - £11,775.48 Business Reserve - £3,823.89 Payments due: Staff quarter 3 £955.50, RA Salt cemetery ground maintenance £1,875.

Date of next meetings: Jan 21st, Mar 17th, May 5th, Jun 30th and Sep 1st.

A full version of the minutes can be found on the village website.

Hickling WI Programme 2020



Hickling WI

Are you looking for something new to try in 2020?

Hickling WI are a friendly group who meet in Hickling Village Hall. We have 11 meetings throughout the year with speakers, demonstrations, participation, refreshments and time to chat. We try to create an interesting and varied programme with something of interest for everyone. In addition, we arrange other activities that many of our members take part in including quizzes, meals out and coach trips to places of interest.

It is a chance to meet with friends and make new ones too!

Why not come along and try one of our meetings for free? If you like us, come and join.

Meetings are on the third Thursday of every month in Hickling Village Hall at 7.30pm

For more information contact - Deb Arncliffe 07539 982559

Date	Topic	Speaker/Presenter
16/1/20	Clive Rudd Entertains with a bring and share buffet.	Clive Rudd
20/2/20	Ethiopia	Colin Russell
19/3/20	AGM and Personal Profiling	Lyn Marshall
16/4/20	Board Games and Beetle Drive	Committee
21/5/20	WI Resolution Vote and Are We Reducing Our Plastic Usage? How?	Committee
18/6/20	An Evening Garden Party - venue to be confirmed	Committee
16/7/20	Summer Entertaining Demonstration and Tasting	Aime Copley
August '20	No Monthly Meeting	
17/9/20	Gardener's Questions	Radio Nutm's Stuart Dixon
15/10/20	Spirits Of Gin Lane	Madame Parbolled
19/11/20	The Work Of Vale First Responders	To be confirmed
17/12/20	Christmas Craft Evening	WI Members

We look forward to welcoming you soon.

Dementia Support Groups

Held on the 2nd Friday of every month

10.30am - 12 noon

Open to people living with Dementia and their carers. Carers are welcome to attend either on their own or accompanied by the person they care for.

It is an opportunity for carers to get information about dementia and gain peer support to help with their caring role. Activity session for people with dementia including games, craft making, singing and much more

The groups are held at:

Dove Cottage Day Hospice, Canal Lane, Stathern, Melton Mowbray. LE14 4EX
For further information contact 01949 860303 or email office@dovecottage.org

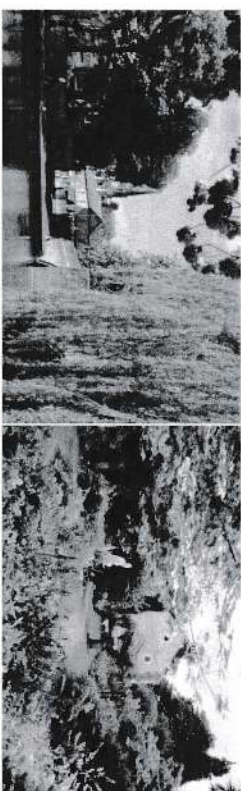


Come and join us for the day on a coach trip to

Bakewell

and

Cascades Gardens



Monday 18th May

Cost £30 - includes a visit to Bakewell on Market Day and admission to Cascades Gardens near Bonsall with an introductory talk and afternoon tea.

Pick up Neville Arms, Kinoulton at 8.25am and Bridgegate Lane Junction,

Hickling at 8.30am

Everyone welcome

For tickets or further information please contact

Pauline Chell - 01664 822835



STEVEN M. DAW

PLUMBING, HEATING and GAS SERVICES

Plumbing work – repairs; Central heating and boiler installations; Boiler servicing; Central heating power flushing; Bathroom design and installation

Over 30 years experience - we cover the Vale of Belvoir

Julian Cottage, Main Road, Shelford, Nottingham, NG12 1EE
Tel: 0115 933 5711 Mobile: 07860 285031
Email: stevendaw@btinternet.com



DAVID HEWITT AERIAL SERVICES

TV/DAB/FM/DIGITAL AERIALS FITTED & REPAIRED



TV/DVD/VCR TUNERS
LOCAL SERVICE EST 32 YEARS



FREE QUOTES
ALL AREAS COVERED
SPECIAL RATES FOR PENSIONERS & DISABLED

Call 01664 820430

Corner Cottage, Clawson Lane, Hickling LE14 3AB



Yve Complete Foot Health Care

Mobile foot health practitioner, MCFHP, MAFHP. Fully qualified and insured. Foot and nail problems assessed and treated to include: thick damages nails, ingrowing toe nails, callous/hard skin, removal of corns, verrucas.

For appointments/enquiries/full price list 'phone 07875 733039

Future Trips

Wentworth Woodhouse House and Wentworth arts/crafts/antiques shopping complex
11th June, £35 (£30 for National Trust members)

Middleton Hall and Gardens
9th July 2020, £35 including tea and coffee on arrival and all tours and talks

Further details nearer the date

To book and for further information please contact Pauline Chell on 01664 822835



Firstly, THANK YOU to anyone who as a Coop member chose Kinoulton Scout Group as your 'Local Good Cause'. We received an amazing £2396.39 from the fund at the Cropwell Bishop store.

We are a very successful Group, one of the largest in the Rushcliffe District, with a wonderful team of experienced volunteer leaders but I am always on the lookout for others to join the team....

Cubs (Monday 1815 – 2015) and Beavers (Tuesday 1800 – 1930) each need a Section Assistant. Term time only and we can guarantee you lots of fun and adventures. Minimum age is 18 years. No previous experience is required.

Or, would you be interested in being 1st Kinoulton Scout Group Quartermaster and helping me to keep the camping equipment in good condition ready for the camping season?

Make 2020 the year you VOLUNTEER to support the young people in our community – we have 96 of them, aged 6 – 18! Don't be shy, contact me for a chat and more details.

Susanne Youngson
An extremely proud Group Scout Leader #SkillsForLife
0788 413 6890 gs/kinoulton@gmail.com

Letter from Farmington, Michigan

Greetings from Farmington

In honor of Fred Warner's birthday, we are sending the enclosed books to our fiends in Hickling. Patricia Majher, the author of both books, came to the Warner Mansion a few years ago for a presentation and book signing. She and my daughter Maria are past editor and assistant editor of the *Michigan History* magazine, and the petosky stone article we sent previously was from that magazine.

Although Fred Warner did not end up being included in the book, a number of the boys and girls were known by the Warner family.

Our annual summer celebration, the Farmington Founders' Festival, is again being held on the weekend nearest Fred's birthday. The morning parade makes its way down Grand River Avenue toward the Warner Mansion, where lunch and a market will await all, followed by an evening fireworks display. Weather permitting, we shall fly the British flag you gifted us, in honor of the friendship we share with our Sister City across the pond.

Warmest wishes from your Farmington history friends!

Martha

Sarah Woodhouse Fitness in the Vale

KETTLECISE- one piece of equipment, one goal, fat loss just got simple! A fun and effective way to challenge your body, change your shape and improve your fitness - come and try it out! Open to all aged 16 and over

LADIES' FITNESS SESSIONS

PERSONAL TRAINING

Contact Sarah for details
www.sw-personaltrainer.co.uk



Message from Farmington, Michigan [our Sister City]

Many thanks for the lovely Christmas gift you sent! Both books look extremely interesting--we have much interest in the English Civil War as well as in Hickling. It was kind of you to have the Earl personally sign his book for us. We will treasure it - and the photo of you with him signing it. Interestingly, the customs personnel attached a note saying that the parcel was opened and examined - I think they enjoyed the books, too!

We have had a very early start to winter this year. Our first snowfall was last week - 10 inches one day and 4 inches the next - plus temperatures down to 7 degrees F. Thankfully it has now returned to more moderate weather!

Kind regards to everyone in Hickling from your Farmington friends!

Mobility Aids for the home

Due to a change in circumstances, I have a number of mobility aids which are no longer required. Rather than see these items sitting idle, I'm putting out feelers, to see if anyone in the local community, could benefit from:

- Aluminium zimmer frame,
- Delta walking frame,
- A battery operated submersible, bath riser seat,
- Variety of both suction and fixed grab handles,
- A floor to ceiling pole**

Most are self explanatory and in perfectly serviceable condition. The versatile floor to ceiling pole** perhaps needs explanation.

The adjustable height, white powder coated, steel pole, wedges securely between the floor and the ceiling and with its 360 degree swivelling arm, is perfect as a multi position support, in circumstances where fixed grab rails are not feasible.

If you, or someone you know, could put these to good use, please call Eric Wood on 01664 822257. Quite happy to talk you through the equipment and can deliver locally. If needed, I could also erect the pole!

All I ask, is for an appropriate donation to be made to Keith Wadkin's Alzheimer fund raising.



Paws 4 Thought



Does your dog need exercising? Cat need feeding?

Going on holiday or working longer hours?

We can help with dog walking, Pet home visits

Small animal and dog boarding in our home

House sitting, collection & delivery service for your pet

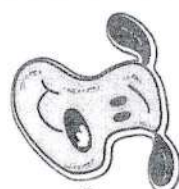
Call Sally or Martin

01664 823844 or 07890 889915

www.paws4thoughtdalby.co.uk

National pet sitter registered and insured including CRB.

For all your pet requirements



WILLIAM HERCOCK

FOR ALL YOUR BUILDING

AND DIY SUPPLIES

SLABS ❖ AGGREGATES

WALLING ❖ CEMENT

BRICKS ❖ BLOCKS

ROOFING ❖ FENCING

ANY AMOUNTS CATERED FOR



FULL RANGE

COAL &

SMOKELESS FUEL

for delivery

or collection

MON - FRI: 7.30am - 5.00pm / SAT: 8.00am - 12.30pm

The Depot Airfield

Dalby Road

Melton Mowbray

Tel: 01664 500947

Fax: 01664 410650

Village Directory

150 Club Beavers Bellringers

Liz Vear 822562
Susanne Youngson 07884 136890
Lynn Irving 07388 348341
lynn.irving74@gmail.com

British Legion Councillors

Colin Henson 01949 81453
John Cottee (County)
cllr.john.cottee@nottscc.gov.uk
Tina Combella (Borough)
TCombella@rushcliffe.gov.uk

Country Fair Committee

Margaret Woolley 822319
Karen Buckley 822102
Sally Jenkins 07971 520711

Cricket Club

P. Parkes 822370
JD Walker 822244
Susanne Youngson 07884 136890
Tim McEwen 822834

Cubs Film Society

Mr B. Baxter 01949 81374
Mrs B. Grundy 01949 81442
Liz Vear 822562
or 07805 407229

Good Neighbours Scheme

Kay Hand 822612
Alison Popplewell 01949 81604
Nick 07950 558608
see back inside cover
Dorothy Chahal 822369
Carol Beadle 822195
Jane Fraser 822845
Gill & John Bloor 822682

Guides Hickling Pre-School Hickling Standard History Group

Kinoulton School Kinoulton School PTFA Neighbourhood Watch Nottinghamshire Police

Mr Savage (head)
Sarah Parris 01949 823925
Chris White 822152
Control Room
Non-emergency number 101
Jo Cartmell (Clerk) 822866

Parish Council Parochial Church Council

Rector Maggie Woodward 01949 81183
maggie.woodward511@btinternet.com
Churchwarden John Bloor 822682
Gill Bloor 822682
Treasurer Alex Thomas 823420
Secretary Dorothy Chahal 822369
Susanne Youngson 07884 136890

Scouts Sunday Club Vale Beaders

see PCC
Elizabeth Evans 01949 81501
Jackie Haynes 822364

Village Hall

Barbara McEwen (Chair) 822834
Tim McEwen (sec.) 822834
John Robinson (treas.) 822762
Phillipa Jacks (bookings) 823622
Lynn Irving 07388 348341
lynn.irving74@gmail.com
Dorothy Chahal (Pres.) 822369
Carol Beadle (Treas) 822195

Village Singers

Women's Institute

Diary

28 January	7.30	Village Hall	Film Club - Wild Rose
11 February	7.30	Village Hall	Film Club - Downton Abbey
15 February	2.00	Village Hall	Jumble Sale
28 February	7.30	Village Hall	Village Hall Quiz Night
25 February	7.30	Village Hall	Film Club - Peterloo
20 February	7.30	Village Hall	W1 - Ethiopia
10 March	7.30	Village Hall	Film Club - Shoplifters
12 March	10.30	The Basin	Circular Walk
13 March	7.30	Village Hall	Evening with Matthew Hoggard
19 March	7.30	Village Hall	W1 - AGM and Personal Profiling
20 March	7.30	Village Hall	Pre-School Quiz Night
24 March	7.30	Village Hall	Film Club - Woman at War
16 April	7.30	Village Hall	W1 - Board Games and Beetle Drive
18 May			W1 Trip to Bakewell+Cascade Gardens
21 May	7.30	Village Hall	W1 - Reducing Plastic Usage
11 June			W1 Trip to Wentworth Woodhouse
18 June			and Wentworth Arts & Crafts Complex
9 July			W1 - Evening Garden Party
16 July	7.30	Village Hall	Trip to Middleton Hall and Gardens
12+13 Sept		All over!	W1 - Summer Entertaining
17 September	7.30	Village Hall	Scarecrow Weekend
15 October	7.30	Village Hall	W1 - Gardeners' Questions
19 November	7.30	Village Hall	W1 - Spirits of Gin Lane
17 December	7.30	Village Hall	W1 - Work of Vale First Responders
			W1 - Christmas Craft Evening

Beaver Scouts 6-8 years, Tuesday 6.15-7.15pm; Cub Scouts 8-10.5 years, Monday 6.30-8.00pm; Scouts 10.5-14 years, Monday 7.30-9.00pm

All at Kinoulton Village Hall

Contact for ALL the sections is through Susanne Youngson 0788 413 6890

gskkinoulton@gmail.com



Hickling Village Newsletter - Committee

Chair; Tim McEwen - Tel. 822834 or tmcewen@globalnet.co.uk

Treasurer/Advertising; Andrew Terry } Tel. 822088 or

Copy & Secretary; Maggy Jordan

} a.terry125@btinternet.com

Copy Collection; Jane Fraser - Tel. 822845

Please get in touch with any of us if you have any comments or suggestions. We would welcome any contributions for future issues - articles, opinions, reports, recipes, poems, brain-teasers - whatever you would like to see in print!

2020 Copy Dates;

April/May 15.3.20

June/July 15.5.20

Copy must be received before these dates to guarantee its appearance.

Please note that the committee reserve the right to edit or omit any material submitted. Opinions expressed in published articles remain the responsibility of the author. Articles may be published anonymously but the committee does need to have details of authorship before publication.

If you are submitting articles ready for publication - (either typed or in computer format) we would be grateful if you could send it in A5 size.

COPY IN ANY FORM WILL BE GRATEFULLY RECEIVED!

e-mail address - a.terry125@btinternet.com

- please make sure that attachments are sent in Microsoft Word or Publisher compatible formats - thank you!

Handwritten Contributions.

If you have handwritten contributions please pass them for typing to:

Maggy Ivy House, Main Street or

Hazel Copperoaks, Bridgate Lane or

Jane Mill Lane Cottages

Otherwise please continue to pass any contributions or ideas to any of the other committee members. Thank You!

Advertising Rates (one advert for one year - 6 issues.)

Front inside cover - £65

Back cover - £80

Quarter page - £30

Half page - £45

Full page - £60

(enclose payment with copy for the advert and give to a committee member before the copy date.)

Personal wanted/for sale adverts are FREE.