



THE PLOUGH INN

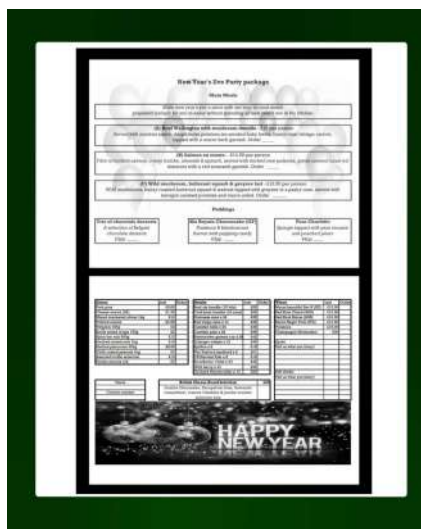
Chris, Kirsty, Elke,
Matilda and Dexter.



Chris and Kirsty took over the Plough just a few short months ago in August 2020 - and what a time to start afresh in the hospitality sector ... We are very lucky that they have such grit and determination as well as talent, humour and kindness!



The New Year's Eve package began with the instruction:
“(1) pour yourself a glass of wine “ - perfect!



BAR - FOOD - TAKEAWAYS SHOP - STAY & PLAY - GARDEN



RETURNING VERY SOON!

Keep an eye on your letterbox and on their Facebook page.

Chris & Kirsty achieved amazing things for us all during the Autumn lockdown and over Christmas - please give them all the support you can when they return after the floods!



... & THEN THE FLOODS CAME ...



Two weeks in to the New Year disaster struck; water began bubbling up through manhole covers under the restaurant extension at the back of the pub.

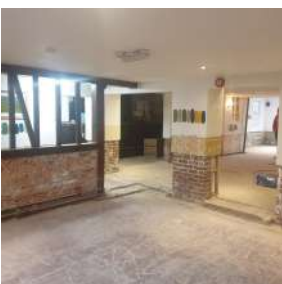
Historically, the village always has (and still does) flood but The Plough Inn isn't known as one of those spots—this was entirely new. Something had happened in the previous year to make this suddenly happen and that's where the maps and plans and local knowledge all got very complicated.

Drainage plans showed an outflow into the canal but this would have meant water flowing up-hill ... Perhaps a culvert under the canal? The surface water drainage for the

Plough and its immediate neighbours seemed to be separate from everyone else's, there was a drainage pipe under the road and into the Basin and another old drainage system running under Main Street towards the Church; so what had changed? It seems it was a

combination of several of these; the pipe into the Basin had been inadvertently blocked off during the restoration of the Wharf in the 1990s, there was a huge blockage under Main Street and a blocked culvert etc etc.

Fortunately, it looks as if the problems have been identified and are on their way to being sorted out; after one unusual flood it feels reasonable to dry things out and move on. But when you come down in the morning five times to find yourself back at square one - it is simply soul-destroying. The news that the various sources of the flooding had been identified and were being dealt with was a game changer.



FLOODED FIVE TIMES—RAIN & SNOW

Support from local farmers, villagers and The Plough in Long Clawson

Severn Trent, Fire Brigade, Streetwise,

Maps, plans, theories

Sand bags, pumps, pipes, wellies, mops & cloths

East Midlands Today

Bewilderment, anxiety, frustration, fear

Hope, optimism, paint samples, re-furb - tomorrow will be better.

A MESSAGE FROM CHRIS AND KIRSTY.

With the main issue that was causing the flooding now resolved (there are still a few issues that need to be sorted, but we are happy they are being dealt with). The flood has caused significant damage as you can see through the photos (previous page), but this has also given us a chance to freshen up the pub and we are very excited that when we do open, it will be a chance to show off a fresh look ready to get people together and celebrate leaving lockdown!

We have felt so appreciated and supported during this very strange and stressful time. We have had so many offers of help from farmers, villagers and pub landlords, bringing pumps and drying equipment. We have had villagers help remove soggy carpets, bring cakes and help move furniture round. We are utterly overwhelmed by the funds raised for us.

We can't wait to get back open and start serving our wonderful community again.

Thank you all so much - now bring on the sunshine!

& A COMMUNITY COMES TOGETHER:

As it became clear just how dire the situation had become, Caroline and Amanda pulled together a plan to help support Chris and Kirsty financially as well as practically:

We are asking you to help raise £1000.

Kirsty and Chris, landlords at the Plough Inn, Hickling, are battling with their fourth consecutive flood in 3 weeks, which has totally devastated their attempts to “keep going” during the Covid crisis and the most recent lockdown restrictions.

A faulty drainage problem has brought an abrupt and untimely halt to their efforts to provide a much loved village store, cafe and themed take-out nights. Leaving them with no means of an income for several weeks to come.

We have set this up to give you an opportunity to show your support and appreciation for the fantastic contribution they’ve made to village life.

Thanking you in advance.
Caroline & Amanda

The amount raised is just wonderful (the fund closed down at the beginning of March) but just as valuable are the lovely messages of support which accompanied the donations - everyone is incredibly grateful and completely overwhelmed; what a fantastic village.

