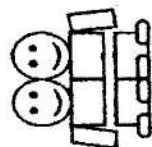




Hickling Christmas Street Market, Craft Fair and Pageant



Sunday 9th December 2001
Starts 2pm



Come and shop for Christmas

Craft Fair
Cake Stall
Tombola
Santa's Grotto
Hot Dogs
Raffle
Market Stalls
Soup



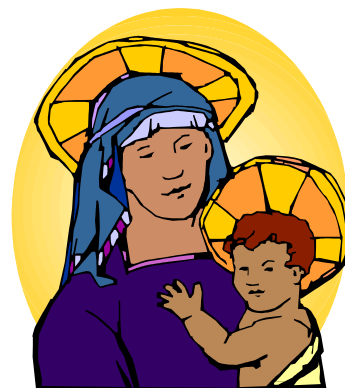
Special Nativity Pageant



In aid of the Lincs & Notts Air Ambulance and Hickling Country Fair 2002

Stall sites available contact:

Margaret Woolley - 01664 822319
Christine Norton - 01664 822986



Nativity Pageant

December 9th, 4 - 5.30pm.

(followed by closing prayers)

A dramatic re-enactment of the Christmas story with adults and children from the village - the pageant will begin near the Bridegate Lane junction at 4pm and then there will be a procession up the village finishing with a nativity tableau in the stable yard of Malt House Farm.

~ please dress up and be part of the crowd in Nazareth and Bethlehem
~ children are very welcome to join in as shepherds and angels, particularly for the closing tableau - just turn up and we'll help you in to position!!

~ there will be detailed programmes with the story and words for all the carols so that you can join in all the way through!

Rehearsal/Walk Through Sunday Dec 2nd 4pm from Bridegate Lane.

~ all enquiries and/or offers of help please contact Jane Fraser 822569, Barbara McEwen 822834 or Molly Collishaw 823115.

Santa's Grotto - December 9th



As well as seeing Santa you can post your letter to Santa and you can bring (new or good condition) toys for Santa's little helper to pass on to the Children's Society Family Centre at Crabtree Farm in Bulwell.